



LIVE ONSITE AUCTION

October 6, 2022 @ 8:30 a.m.

QUARRICK
EQUIPMENT & AUCTIONS
INC.

168 QUARRICK ROAD
UNIONTOWN, PA 15401

PRESORTED
FIRST CLASS
US POSTAGE
PAID
ERIE PA
PERMIT NO. 199

QUARRICK
EQUIPMENT & AUCTIONS
INC.

LIVE ONSITE AUCTION

PHONE: 724-439-1621

FAX: 724-439-9263

info@quarrickauction.com

www.quarrickauction.com

Internet bidding also available

www.equipmentfacts.com

www.proxibid.com

ONLINE BIDDING
POWERED BY EQUIPMENTFACTS.COM

proxibid

Dated material. Please deliver promptly.

RETURN SERVICE REQUESTED



IN THE EQUIPMENT AUCTION INDUSTRY SINCE 1983, FAMILY OWNED, BUILT, AND OPERATED
TONY QUARRICK - MICHAEL QUARRICK - MATTHEW QUARRICK - AUCTION LICENSE # AY002278

SCHEDULE—OCTOBER 6

Ring 1: 8:30 a.m. to 9:30 a.m. misc. ag and construction attachments, 9:30 a.m. until conclusion: construction, transportation, agricultural equipment, live and online bidding

Ring 2: 8:30 a.m. to 10:00 a.m. misc. ag and construction attachments, 10:00 a.m. until conclusion: tractors and farm equipment, trailers, construction and agricultural attachments, trucks and vehicles.

Live and online bidding

DIRECTIONS

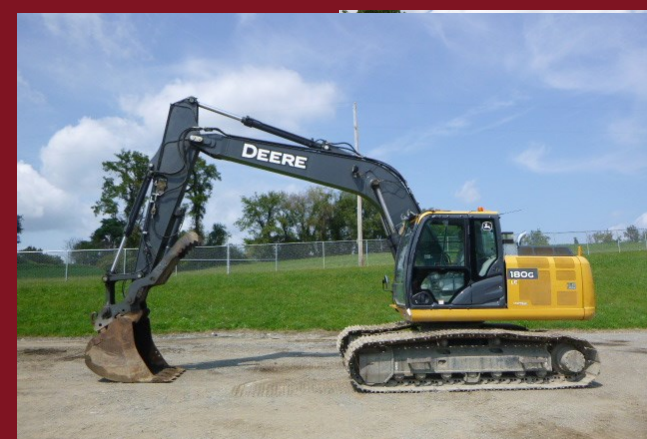
LOCATED 50 MILES SOUTH EAST OF PITTSBURGH / 20 MILES NORTH OF MORGANTOWN, WV: EASILY ACCESSIBLE: ONLY 20 MINUTES FROM I-70, I-76 (PA TURNPIKE), I-68 AND 30 MINUTES FROM I-79.

AIR SERVICE: PITTSBURGH INTERNATIONAL AIRPORT: MOST MAJOR AIRLINES. RENTAL CARS AVAILABLE. 1 HOUR & 15 MIN. FROM AUCTION.

CONNELLSVILLE AIRPORT (KVVS): 5 MINUTES FROM AUCTION

HOTELS: DISCOUNT PROVIDED FOR QUARRICK EQUIPMENT CUSTOMERS at the following:

Hampton Inn and Hilton Garden Inn located in Uniontown, PA



October 6, 2022

Starts 8:30 a.m. Phone: 724-439-1621

For the most up to date listings and photos
go to quarrickauction.com

MORE PHOTOS ON
www.quarrickauction.com

Trucking arrangement
assistance available

Pre-approved consignments welcome.
Contact us for one of the equipment auction industry's biggest and best equipment marketplaces with the industries most competitive commission rates by calling:

724-439-1621

TERMS & CONDITIONS

VALID PHOTO ID REQUIRED TO OBTAIN BUYERS NUMBER. PAYMENT MADE IN FULL DAY OF AUCTION VIA CASH, GOOD CHECK ACCOMPANIED BY A BANK LETTER OF GUARANTY, BANK WIRE TRANSFER, OR VISA/MASTER CARD WITH 3% FEE. NOTE: THERE WILL BE AN ONSITE BUYERS FEE OF \$250.00 PER ITEM FOR ITEMS SELLING FOR \$2,500.00 & UP, & 10% FEE PER ITEM, FOR ALL ITEMS SELLING FOR \$2,500.00 & BELOW. ALL ITEMS ARE SOLD AS-IS WHERE IS WITH NO WARRANTIES OR GUARANTEES. **WE ARE NOT RESPONSIBLE FOR FOLLOWING:** ACCIDENTS ON AUCTION YARD PREMISES; REPRESENTATION OR CONDITION OF ITEMS SOLD; NO SHOWS; PLEASE CALL AHEAD TO BE SURE OF AVAILABILITY OF SPECIFIC ITEMS, INVENTORY MAY CHANGE DUE TO DAILY BUSINESS OR CIRCUMSTANCES BEYOND OUR CONTROL; ALL ANNOUNCEMENTS DAY OF AUCTION TAKE PRECEDENCE OVER PRINTED MATERIAL. SALES TAX COLLECTED WHERE APPLICABLE UNLESS VALID EXEMPTION PROVIDED.

DOZERS & CRAWLER LOADERS:

05 Case 650K orops, PAT, hy-stat
14 Case 750M LGP orops, PAT blade, hy-stat
Case 850D cab, heat, PAT blade, power shift trans
Cat D4H Series II cab, heat, PAT blade, power shift trans
07 Cat D4GXL Cab cab, air, hy-stat, PAT blade, front brush rake
Cat D5C XL cab, heat, power shift trans, PAT blade
10 Cat D5K XL cab, air, hy-stat, PAT blade, nice pre-emission dozer
05 Cat D5G XL cab, air, PAT blade, hy-stat
Cat D5M XL orops, PAT blade, power shift trans
04 Cat D5N XL orops, PAT blade, FTC steering, rear ripper, engine runs weak with miss, fully functional otherwise, sells as-is for that reason
16 Cat D6N LGP cab, air, diff steer, PAT blade, grade control, wired for GPS, aux hyd
81 Cat D9H cab, heat, 4 Barrell rear ripper
Cat 953C Loader cab, air, GP digging bucket, rear ripper, hy-stat
06 Cat 953 D Track Loader cab, air, GP bucket
03 Cat 963C Loader cab, air, hy-stat, GP bucket
05 JD 450J LGP cab, air, PAT blade, hy-stat
JD 550G LT orops, power shift trans, PAT blade, JD 4600 winch, fair lends
96 JD 650G orops, PAT blade, power shift, long track
05 JD 650J orops, PAT, hy-stat, limb riser, screens, nice hyd outlet
10 JD 650J XLT cab, air, PAT blade, hy-stat
16 JD 650K XLT orops, PAT blade, hy-stat
07 JD 700J LGP cab, air, PAT blade, hy-stat, wired for GPS
01 JD 700H LT orops, hy-stat, C frame, 09 Midwestern M540C Pipelayer (missing arm)
05 JD 850C cab, air, PAT blade, hy-stat
90 JD 455G Loader cab, heat, 4 in 1 bucket
05 JD 755C Loader cab, air, hy-stat, Pemberton hyd root grapple
98 Komatsu D37P-5 cab, heat, PAT blade, power shift trans, Carco 30 B winch
12 Komatsu D51PX-22 cab, air, PAT blade, hy-stat
20 Komatsu D61PX-24 cab, air, PAT blade, hy-stat
05 Komatsu D65EX-15 orops, semi-U blade, hy-stat

EXCAVATORS:

13 Bobcat E26 orops, 3rd valve, rubber track, backfill blade, q/c
16 Bobcat E26 orops, 3rd valve, hyd thumb, q/c, blade, rubber track
13 Bobcat E32 orops, 3rd valve, backfill blade, rubber track, q/c, hyd thumb
16 Bobcat E35 cab, air, 3rd valve, extendahoe, h q/c, rubber track, backfill blade, hyd thumb
22 Bobcat E42 cab, air, 3rd, q/c, hyd thumb, blade, 280 hrs, full warranty
19 Bobcat E50 cab, air, rubber track, power q/c, hyd thumb, backfill blade
19 Bobcat E50 cab, air, angle blade, rubber track, 3rd valve, hyd thumb
16 Bobcat E85 M cab, air, 3rd valve, q/c, blade, rubber trac, swing boom
Bobcat X325 orops, rubber track, backfill blade, 3rd valve
Bobcat X325 orops, 3rd valve, mech thumb, backfill blade, rubber track
10 Bobcat 325G orops, backfill blade, 3rd valve, q/c,

rubber track

03 Bobcat 334 orops, 3rd valve, mech thumb, backfill blade, rubber track
08 Bobcat 425G cab, air, 3rd valve, q/c, blade, rubber track, nice 330 hrs
Bobcat 341D cab, air, 3rd valve, q/c, hyd thumb, blade, new rubber track
08 Bobcat 442E cab, air, 3rd valve, hyd thumb, backfill blade, q/c, rubber track, swing boom, 2 buckets
04 Case CX27 orops, 3rd valve, backfill blade, rubber track
06 Case CX36 cab, air, 3rd valve, blade
2-07 Case CX80 cab, air, 3rd valve, backfill blade, Roadliner pads, zero swing, q/c, clean original, 2050 hrs
16 Cat 301.7DCR orops, 3rd valve, rubber track, backfill blade
11 Cat 303.5DCR cab, air, angle blade, 3rd valve, hyd thumb, rubber track
16 Cat 304E2 cab, air, angle blade, rubber track, power q/c, 3rd valve, hyd thumb
18 Link Belt 75X3 cab, air, Roadliner pads, backfill blade, 3rd valve, zero swing
12 Cat 305E cab, air, backfill blade, rubber track, 3rd valve, q/c, hyd thumb
16 JD 35G cab, air, 3rd valve, q/c, hyd thumb, rubber track, backfill blade
05 Cat 307CSB cab, air, 3rd valve, backfill blade, swing boom, q/c
12 Cat 308D cab, air, 3rd/4th valve, swing boom, blade, steel track
14 Cat 314E cab, air, backfill blade, mech thumb, zero tail swing, Roadliner pads
09 Cat 312DL cab, air, 3rd valve, Cat hyd thumb, q/c, blade
09 Cat 320D LLR cab, air, 3rd valve, q/c, zero tail swing
Cat M316D cab, air, outriggers, Cat hyd thumb, Helac hyd tilt, q/c
Doosan DX225LC cab, air, single bar grousers
16 JD 26G orops, backfill blade, rubber track, 3rd
19 JD 26G orops, backfill blade, rubber track, 3rd
16 JD 26G orops, q/c, hyd thumb, backfill blade, rubber track, 3rd valve
14 JD 27D orops, backfill blade, 3rd valve, q/c, rubber track
03 JD 35C orops, 3rd valve, q/c, blade, rubber track
06 JD 35D orops, 3rd valve, q/c, hyd thumb, backfill blade, rubber track
11 JD 35D orops, q/c, 3rd valve, hyd thumb, angle blade, rubber track
13 JD 35G orops, 3rd valve, q/c, backfill blade, rubber track
15 JD 35G cab, air, 3rd, valve, q/c, backfill blade, rubber track, hyd thumb
12 JD 160G cab, air, mech thumb
18 JD 180G LC cab, air, hyd thumb, 3rd valve, auto grease, nice low hour
JD 690 cab, heat, mech thumb
14 Komatsu PC88MR-10 cab, air, 3rd valve, backfill blade, Roadliner pads, q/c, swing boom, rear camera
06 Komatsu PC160LC-7 cab, air, mech thumb
17 Komatsu PC210LC-11 cab, air, 36 inch bucket, rear camera
Komatsu PC220LC cab, heat, 3rd valve, q/c
16 Kubota U17VR1 orops, 3rd valve, rubber track,

backfill blade

16 Kubota KX713S orops, 3rd valve, rubber track, backfill blade, q/c
16 Kubota KX713S orops, 3rd valve, rubber track, backfill blade, q/c, hyd thumb
06 Kubota KTX71-3 orops, 3rd valve, backfill blade, rubber track
14 JD 310K EP 4wd, standard hoe, aux hyd, power shift
97 NH 555E 2wd, cab, heat, missing doors, standard hoe
Ford 455C Skip loader orops, 4wd, q/c, 3 pt, PTO
SKID STEER LOADERS:
89 Bobcat 743 orops, aux hyd, q/c
Bobcat 763 orops, q/c, aux hyd
Bobcat 763 orops, q/c, aux hyd
Bobcat 773 cab, heat, q/c, high flow aux, a/c control
02 Bobcat 873 orops, q/c, aux hyd, 2 speed
12 Bobcat S175 cab, heat, power q/c, ACS control, aux hyd
06 Bobcat S185 cab, air, no door, aux hyd, q/c, runs, needs drive chain repairs
09 Bobcat S185 orops, 3rd valve, 4 in 1 bucket
05 Bobcat S220 orops, q/c, aux hyd
14 Bobcat S570 cab, air, ACS control, high flow aux, 2 speed, power q/c
16 Bobcat S590 cab, heat, power q/c, aux hyd
14 Bobcat S570 cab, heat, power q/c, aux hyd
Bobcat S630 orops, q/c, aux hyd
12 Bobcat S650 T4 cab, air, SJC control, 2 sp, power q/c, aux hyd, steel track, Kubota pre-emission engine
14 Bobcat S650 cab, air, power q/c, aux hyd
14 Bobcat S850 cab, air, 2 speed, power q/c, aux hyd, SJC control, rear camera
19 Bobcat S850 T4 cab, air, 2 speed, power q/c, aux hyd
11 Bobcat T190 cab, air, ALS control, aux hyd, power q/c
06 Bobcat T300 cab, air, power q/c, aux hyd
10 Bobcat T300 cab, air, ACS control, q/c, HF aux, forestry guards, poly door
13 Bobcat T590 orops, q/c, aux hyd
15 Bobcat T590 orops, q/c, aux hyd
18 Bobcat T595 cab, air, power q/c, aux hyd, SJC control
14 Bobcat T630 cab, air, 2 speed, power q/c, high flow aux, 1200 hrs
16 Bobcat T750 cab, air, 2 sp, SJC, high flow aux, power q/c
16 Bobcat T770 cab, air, 2 sp, SJC, high flow aux, power q/c
12 Bobcat T870 cab, air, 2 sp, SJC, high flow aux, power q/c, pre-emission
Case 1840 orops, q/c, aux hyd
14 Case SV300 cab, heat (no door), q/c, 2 speed, aux hyd
18 Case TV450 cab, air, high flow aux, power q/c, 2 speed
07 Cat 226B2 cab, heat, q/c, aux hyd
12 Cat 226B3 cab, air, q/c, nice, 1220 hrs
09 Cat 236B2 cab, air, power q/c, aux hyd
Cat 246D cab, air, 2 speed, high flow, power q/c
07 Cat 252B3 orops, q/c, aux hyd
19 Cat 272D XHP cab, air, 2 speed, high flow

LOADER BACKHOES:

93 Case 580 Super K cab, heat, extendahoe, 4 in 1 bucket
03 Case 580 SM cab, air, 4 in 1 bucket, standard hoe, 2wd
10 Case 580SM air, pilot controls, extendahoe, 4wd, ride control
09 Case 580SM II 4wd, cab, air, extendahoe, aux hyd, ride control
11 Case 580SN cab, air, 4wd, extendahoe
94 JD 310D 4wd, cab, air, extendahoe
08 JD 310SJ 4wd, cab, air, power shift trans, pilot controls, extendahoe
14 JD 310K EP 4wd, cab, air, pilot controls, front q/c with 3rd valve, extendahoe, rear 3rd valve

LIVE ONSITE AUCTION - CONSTRUCTION & AGRICULTURAL EQUIPMENT

THURSDAY, **October 6, 2022** at 8:30 a.m. EST 168 Quarrick Rd, Uniontown, PA 15401 PHONE: 724-439-1621

14 JD 310K EP 4wd, standard hoe, aux hyd, power shift
97 NH 555E 2wd, cab, heat, missing doors, standard hoe
Ford 455C Skip loader orops, 4wd, q/c, 3 pt, PTO

SKID STEER LOADERS:

89 Bobcat 743 orops, aux hyd, q/c
Bobcat 763 orops, q/c, aux hyd
Bobcat 763 orops, q/c, aux hyd
Bobcat 773 cab, heat, q/c, high flow aux, a/c control
02 Bobcat 873 orops, q/c, aux hyd, 2 speed
12 Bobcat S175 cab, heat, power q/c, ACS control, aux hyd
06 Bobcat S185 cab, air, no door, aux hyd, q/c, runs, needs drive chain repairs
09 Bobcat S185 orops, 3rd valve, 4 in 1 bucket
05 Bobcat S220 orops, q/c, aux hyd
14 Bobcat S570 cab, air, ACS control, high flow aux, 2 speed, power q/c
16 Bobcat S590 cab, heat, power q/c, aux hyd
14 Bobcat S570 cab, heat, power q/c, aux hyd
Bobcat S630 orops, q/c, aux hyd
12 Bobcat S650 T4 cab, air, SJC control, 2 sp, power q/c, aux hyd, steel track, Kubota pre-emission engine
14 Bobcat S650 cab, air, power q/c, aux hyd
14 Bobcat S850 cab, air, 2 speed, power q/c, aux hyd, SJC control, rear camera
19 Bobcat S850 T4 cab, air, 2 speed, power q/c, aux hyd
11 Bobcat T190 cab, air, ALS control, aux hyd, power q/c
06 Bobcat T300 cab, air, power q/c, aux hyd
10 Bobcat T300 cab, air, ACS control, q/c, HF aux, forestry guards, poly door
13 Bobcat T590 orops, q/c, aux hyd
15 Bobcat T590 orops, q/c, aux hyd
18 Bobcat T595 cab, air, power q/c, aux hyd, SJC control
14 Bobcat T630 cab, air, 2 speed, power q/c, high flow aux, 1200 hrs
16 Bobcat T750 cab, air, 2 sp, SJC, high flow aux, power q/c
16 Bobcat T770 cab, air, 2 sp, SJC, high flow aux, power q/c
12 Bobcat T870 cab, air, 2 sp, SJC, high flow aux, power q/c, pre-emission
Case 1840 orops, q/c, aux hyd
14 Case SV300 cab, heat (no door), q/c, 2 speed, aux hyd
18 Case TV450 cab, air, high flow aux, power q/c, 2 speed
07 Cat 226B2 cab, heat, q/c, aux hyd
12 Cat 226B3 cab, air, q/c, nice, 1220 hrs
09 Cat 236B2 cab, air, power q/c, aux hyd
Cat 246D cab, air, 2 speed, high flow, power q/c
07 Cat 252B3 orops, q/c, aux hyd
19 Cat 272D XHP cab, air, 2 speed, high flow

aux, power q/c, rear camera
Cat 262B orops, q/c, aux hyd, 2 speed
19 Cat 272D XPS cab, air, 2 speed, HF aux, power q/c, rear camera
18 Cat 239D cab, air, power q/c, aux hyd
12 Cat 247B3 orops, aux hyd, q/c
17 Cat 259D cab, air, 2 sp, power q/c, aux hyd, rear camera

08 Cat 289C cab, air, q/c, 2 sp, high flow aux
12 Cat 279C2 cab, air, q/c, 2 sp, high flow aux
11 Cat 297C cab, air, 2 speed, high flow aux, power q/c, runs & moves intermittently, sells as-is
18 Cat 299D2 cab, air, power q/c, 2 sp, high flow aux
JD 7775 orops, q/c, aux
04 JD 250 II cab, heat, q/c, aux hyd, weight kit
09 JD 320 orops, q/c, aux hyd
10 JD 320D orops, q/c, aux hyd
16 JD 324E cab, air, 2 speed, power q/c, aux hyd
14 JD 326E cab, heat, q/c, aux hyd
14 JD 329E cab, air, power q/c 2 sp, EH controls
15 JD 333E cab, air, EH control, high flow aux, ride control, 2 speed, power q/c
15 JD 333E cab, air, power q/c
19 JD 333G CTL cab, air, 2 speed, high flow aux, power q/c
JCB 110 Robot orops, q/c, aux hyd, 2 speed, 550 hrs, nice

16 JCB 260T orops, q/c, aux hyd, start, ran & operated when it cam in, does not move currently, electrical issues, sells as-is
Gehl 4835 SXT orops, q/c, aux hyd
11 Kubota SVL90 cab, air, high flow aux, 2 sp, power q/c
15 Kubota SVL90-2 cab, air, high flow aux, 2 sp, power q/c
04 NH LS180 cab, heat, q/c, aux hyd
NH LS190 orops, q/c, high flow aux, 2 sp
NH C232 cab, air, joystick control, 2 speed, aux hyd
20 NH C327 orops, power q/c, aux hyd rear camera, 2 speed
91 NH L783 orops, q/c, aux
13 Takeuchi TL12 cab, air, power q/c, 2 speed, high flow aux, new tracks

COMPACTION, MOTOR GRADERS, ASPHALT EQUIPMENT:

12 Bomag BW145DH-40 orops, 54 inch smooth drum vibratory
Hamm 3205P orops, 54 inch pads foot vibratory
07 Hamm 3412P orops, 84 inch pad foot, vibratory, knock down blade
Benthling B400 Kubota diesel powered, 52 inch vibratory double drum asphalt roller w/water sys
13 Volvo SD70D orops, 66 in smooth drum
Volvo SD100D cab, air, 84 inch smooth drum
12 Volvo G946B Motor Grader cab, air, all wheel drive, front Scarifier, rear snow wing, fenders, county owned

Leeboy L1000T Paver Hatz diesel powered, track drive propane heated screed
08 Lee-Boy L5000T Path Master Track Asphalt Paver diesel powered, track drive, 4 ft to 8 ft paving width, propane heated screed

MISC. CONSTRUCTION EQUIPMENT:

Rayco RG50 Stump Grinder—non operational
Rayco RG20HD Stump Grinder
Tar River 6 in BWC-060 Wood Chipper
18 Defender FX36 Mulcher 65 mm pins
2-20 FAE UML1 SSL-150 VT-BL Mulcher skid steer mulcher
20 Fecon 50 in 14-27 GPM Mulching Head Skid Loader skid steer mount, low use
21 John Deere RS72 Rotary Cutter low use, heavy rotary mower skid steer
11 FAE 150VT Mulcher skid steer mulcher
17 Vermeer BC 700XL Chipper Kohler 25 hp gas powered
06 CMI C125 Twister Tracked Mulcher Tractor cab, air, steel track, JD powered, rear winch, FAE 140/u mulching head
Bobcat Fast Cutter FRC 60 Mulching Head 2 speed skid steer mulcher
Morbark 2400 Tow-Behind Wood Chipper John Deer diesel powered
Timberjack 380B Skidder orops, 23.1-26 tires, cable skidder w/Gearmatic winch, knock down blade, Cummins diesel powered
Autocrane 3203 Service Truck Crane
Ditch Witch 6510

Alamo Traxx Slope Mower Isuzu diesel, no remote, does not work, heavy flail mower
Tarco Hylander Hopper Salt Spreader
18 Ditch Witch RT45 orops, 4wd, H314 Trencher, PAT blade, A323 backhoe attach, 49 hr
Mower King 72 in Skid Steer Mower
14 Bradco Flail Mower 50 mm pins
Kent FRD FX275 Excavator Hammer off JD 160 Exc, 21-33 ton machine
Allmand Maxi Heat Heater Cat diesel powered
Trojan 72 in 300CL-Tilt Bucket
Packer Industries 750 Demolition Grinder Detroit JM 6 cylinder diesel powered, hyd unloading conveyor, remote control
15 Cat G310 B-D Grapple Rotating 360 Degree hyd, rotating grapple, .375 m3 volume, 70mm pins, 11 inch spacing between ears
Diamond Brush Cutter Skid Loader
Attachment heavy forestry mulcher for skid steer
Broce RJ-350 Broom cab, air, JD diesel powered water system
Finn B-70-1 Blower Kubota diesel powered
Puckett Brothers SF850 Curb Machine 3 cyl diesel powered
Allen AT1Y Concrete Buggy Kohler gas powered, rubber track drive, hyd dump bed
ATI Major Skeleton Grapple Bucket Rubber Tired Ldr open bottom hyd grapple bucket

Stanley MBX15 Mini Excavator Hammer
Several new and used skid steer attachments
Several new and used excavator buckets

TELEHANDLERS, FORKLIFTS, MANLIFTS:

01 Cat TH83 8000 lb Rough Terrain Tel Forklift orops, 3rd valve, q/c, tilt forks, 8K lbs, 41 ft reach
05 Cat TH460B Telehandler orops, q/c, 3rd valve, tilt on forks, 8800 lbs cap, 44ft reach
04 Cat TH560B 4X4X4 Telehandler orops, q/c, aux hyd, outriggers, 10K lbs, 44 ft reach
08 Doosan D35C-5 7000 lb Diesel Pneumatic Tire For cab, heat, hyd rotating forks
15 Genie BLZ45/25 Boom Lift 4wd, diesel, IC power, 45 ft reach
Genie Z-45/25 Manlift gas powered, 4wd
12 Haulotte Biljax 3632T Pull Behind Manlift electric powered, 37 ft 6 in lift, new batteries, new jack
17 Haulotte 4527A Lift electric powered, 45 ft platform height
21 John Deere RS72 Rotary Cutter low use, heavy rotary mower skid steer
11 FAE 150VT Mulcher skid steer mulcher
17 Vermeer BC 700XL Chipper Kohler 25 hp gas powered

06 CMI C125 Twister Tracked Mulcher Tractor cab, air, steel track, JD powered, rear winch, FAE 140/u mulching head
Bobcat Fast Cutter FRC 60 Mulching Head 2 speed skid steer mulcher
Morbark 2400 Tow-Behind Wood Chipper John Deer diesel powered
Timberjack 380B Skidder orops, 23.1-26 tires, cable skidder w/Gearmatic winch, knock down blade, Cummins diesel powered
Autocrane 3203 Service Truck Crane
Ditch Witch 6510
Alamo Traxx Slope Mower Isuzu diesel, no remote, does not work, heavy flail mower
Tarco Hylander Hopper Salt Spreader
18 Ditch Witch RT45 orops, 4wd, H314 Trencher, PAT blade, A323 backhoe attach, 49 hr
Mower King 72 in Skid Steer Mower
14 Bradco Flail Mower 50 mm pins
Kent FRD FX275 Excavator Hammer off JD 160 Exc, 21-33 ton machine
Allmand Maxi Heat Heater Cat diesel powered
Trojan 72 in 300CL-Tilt Bucket
Packer Industries 750 Demolition Grinder Detroit JM 6 cylinder diesel powered, hyd unloading conveyor, remote control
15 Cat G310 B-D Grapple Rotating 360 Degree hyd, rotating grapple, .375 m3 volume, 70mm pins, 11 inch spacing between ears
Diamond Brush Cutter Skid Loader
Attachment heavy forestry mulcher for skid steer
Broce RJ-350 Broom cab, air, JD diesel powered water system
Finn B-70-1 Blower Kubota diesel powered
Puckett Brothers SF850 Curb Machine 3 cyl diesel powered
Allen AT1Y Concrete Buggy Kohler gas powered, rubber track drive, hyd dump bed
ATI Major Skeleton Grapple Bucket Rubber Tired Ldr open bottom hyd grapple bucket

ARTIC, DUMPS & CRAWLER DUMPS:

98 Volvo A25C Articulated Water Truck cab, air, 04 Diversified Fabricators water body
08 IHI IC70 Crawler Dumper cab, air, rubber track, hyd dump bed
18 Canycom S25A Track Dumper orops, rubber track, rotating hyd dump bed
09 IHI IC70-2 Crawler Carrier cab, air, rubber track, hyd dump bed
Morooka MST 2200 Track Truck cab, heat, rubber track, hyd dump bed
13 Morooka MST2200VD crawler dumper cab, air, rubber track, hyd dump bed
08 IHI IC45-2 Crawler Carrier cab, heat, rubber track, hyd dump bed

RUBBER TIRED LOADER:

Case 621D cab, heat, Gp bucket, ride control
Case 621E cab, air, 3rd valve, q/c, Gp bucket
08 Cat 908 cab, air, q/c, GP bucket, 3rd valve
10 Doosan DL220 cab, air, q/c, GP bucket
10 Cat 908H cab, air, q/c, 3rd valve, Gp bucket
07 Cat IT14G cab, air, 3rd valve, q/c, Gp bucket
Cat IT28G cab, heat, q/c, 3rd valve
JCB 407 cab, heat, 3rd valve, q/c, GP bucket

JCB 409 cab, air, q/c, GP bucket, forks, 3rd valve
15 JD 324K cab, air, q/c, 3rd valve, engine removed in crate, sells as-is
17 JD 344K cab, air, 3rd valve, auto grease
14 JD 444K cab, air, 3rd valve, q/c GP bucket
07 JD 544J cab, air, 3rd valve, Powerllet boom, q/c, GP bucket
14 JD 624K cab, air, high lift boom, 3rd valve, q/c, GP bucket
14 JD 644K cab, air, 3rd valve, q/c, GP bucket
JD 644E cab, heat, q/c, GP bucket
05 JD 744J cab, air, no attachment, runs and operates but smokes
01 Kubota R420 orops, 3rd valve, q/c, GP bucket, forks
14 SDLG LG938L cab, air, Volvo q/c, 3rd valve
Schaffer 9330T cab, heat, telescopic boom, q/c bucket, hay fork, 4wd
10 Volvo L40B cab, air, 3rd valve, q/c, GP bucket
06 Volvo L90E cab, air, q/c, GP bucket
18 Volvo L90H cab, air, q/c, GP bucket, 3rd valve, Bridgestone 20.5 R 25 tires, ride control
Kawasaki 95Z7 cab, air, GP bucket
Yanmar V3-3 cab, heat, 3rd valve, GP bucket

ON ROAD TRUCK & TRAILERS:

06 GMC C5500 Mechanics Truck Duramax diesel, 4wd, auto trans, hyd brakes, Summit utility body, Quincy gas powered air compressor, Stellar 6620 crane, hyd outriggers
77 International 5000 Paystar Triaxle Cummins diesel powered, 8 LL trans, 3rd valve, lift axle, aluminum dump bed
05 International 7600 Tri Axle Dump Cummins ISM engine, 8LL trans, OX steel body dump, rubber block suspension
12 Kenworth T270 Service Truck Paccar PX-6 240 Engine, air brake, 26K GVW, Fuller 6 sp trans, Logan hyd compressor, auto crane 8005 H crane, hyd out riggers
16 Trail-Eze TE80HTS Trailer tandem hyd sliding axle, hyd beaver tail, fire damage on axle, sells as-is

FARM & COMPACT TRACTORS:

19 JD 1023E 4wd, hydro, 3pt, pto, JD loader
JD 110 Loader Backhoe 4wd, hydro, 3pt, pto, skid steer q/c
96 JD 5400 4wd, woods guard, 3pt, pto, 2 scvs
92 Case IH 895 open station, 4wd, 3pt 540/1000 PTO, 3 scv. Case IH 2255 diesel, shuttle shift
Case IH 895 open station, 4wd, 3pt, 2 scv, 540 PTO
Bush Hog 2846 QT loader w/joy stick electric hi-low
95 Case IH 5140 4wd, cab, air, power shuttle, power shift trans, 3 pt, PTO 2 scv
Westerdorf TA-26 loader
Int Cub 154 Lowboy gas, manual trans, Woods belly mower
95 Ford NH 5610S 2wd, 3pt, pto, 2scv, Ford 7210 loader w/skid steer q/c, joystick
Ford 800 gas powered, 2 scv, 3 pt, PTO
Kubota L2900 4x4 4wd, glide shift trans, 3 pt, PTO
Kubota L3350 4wd, power shuttle, 3pt, pto, loader
Kubota L4600 4wd, hydro, 3pt, pto, Kubota LA765 skid steer q/c
19 Kubota L4701 HST open, hy-stat, 3 pt, PTO rear scv
Kubota LA 765 Loader w/skid steer q/c

17 Kubota M6060 4wd, power shuttle, 3 pt, PTO, 2scv, Kubota LA 1154 loader w/skid steer q/c
18 Kubota B26 Loader Backhoe 4wd, orops, hydro, 3 pt capable, PTO, ss q/c
97 Kubota L35 Loader Backhoe 4 wd, orops, 3 pt capable, PTO, glide shift, power shuttle trans
14 Kubota L-45 Loader Backhoe 4wd, hydro, 3pt capable, pt, skid steer q/c
EZ GO 1000 Side by Side cab, dump bed
11 John Deere 825 Gator w/Snow Plow 4wd, cab, gas, boss V front snow plow winch
JD HPX Gator UTV 4wd, diesel
18 Bobcat 3400G UTV cab, heat, 4wd, dump bed
Massey Ferguson ZT33 Zero Turn Mower diesel powered, ZD 60M, 60 in mower deck

FARM EQUIP & ATTACHMENTS:

2020 Woods BW1371 Batwing Mower like new
John Deere 1008 10 ft Brush Hog
32 in disc
5 ft Culipacker
4 ft brush hog
Farm Supply Fertilizer Spreader
John Deere 582 Hay Baler, Monitor crop cutter, net wrap, twine, monitor in office
New Holland 1432 Discbine center pull, flail conditioner
New Holland 1412 Discbine flail conditioner
Vermeer Top Gun Bale Chopper straw blower, self loading
Case IH 8435 Round Baler silage special, hyd twine tie
Willmar 5500 4T Narrow Track
New Idea 323 1 Row Corn Picker
Athens 156 Chisel Plow
JD 643 6 row corn head 30 in row spacing
JD 915 15ft grain head flex head, poly snouts, full finger reel

LOCAL LAND CLEARING COMPANY**EXCESS INVENTORY LIQUIDATION:**

15 Chevy 2500 HD Tool Body Truck 4wd, gas, auto trans, reading service body
18 Chevy 2500 HD Tool Body Truck gas, auto trans, 4 door, 4wd, reading service body
13 Ford F750 Tree Bucket Truck 6 sp manual trans, air brakes, Cummins 240 HP, Altec chip box w/trailer hitch, Altec CR 760-B70, 70 ft reach man basket