



FORMER DD'S TRADING POST PUBLIC AUCTION



TUESDAY - OCTOBER 27 AT 12:00 NOON

Located at 1201 Pipestone Rd. - Benton Harbor, MI 49022
(Across from Hasse's Towing & Crane Service)

Parcel Information

- 1.25 Acres
- Class 210 Commercial
- Benton Township
- Summer Tax \$1,453.96
- Winter Tax \$1,494.00
- SEV 42,800



High Traffic Exposure on the corner of:
M-139 and Pipestone Road

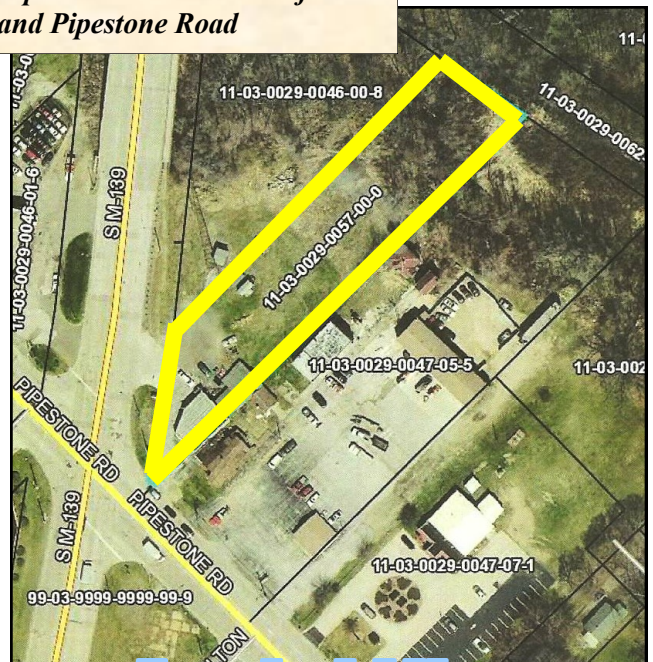
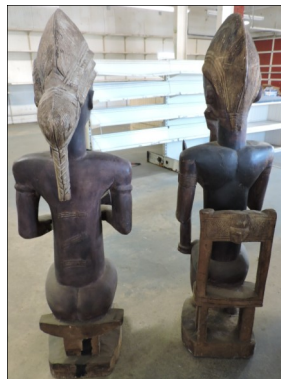
REAL ESTATE TERMS:

10% Non-Refundable Deposit day of auction. Balance due within 25 days. Transfer with new deed and title insurance. 10% Buyer's premium added to final accepted offer to make contract price. Sold in "AS-IS" Condition. All offers are subject to sellers approval. Viewing morning of the auction at 10:30 A.M.

**Commercial
Real Estate**

Personal Property

-5 Ft. Tall - Hand Carved African Man and Women w/Child
"Fertility Statues"



Aerial View

GLASSMAN AUCTION SERVICE John Glassman (269) 757-3315