



Gerald E. Parrigin Estate



Estate Auction

FRIDAY - SEPTEMBER 13 AT 12:00 NOON

Located at 188 & 250 S. Paw Paw Street - Coloma, MI
Corner of S. Paw Paw Street and Leedy Court

VEHICLES

- 2010 Chevy Silverado 4 Door Truck, 4X4, 275,057 Miles, VIN: 3GCRKTE31AG201683
- 2008 Chevy IMPALA, 4 Door, 60,852 Miles, VIN: 2G1WT58K081373407
- 2003 Ford Econoline Conversion Van, 111,937 Miles, VIN: 1FDRE14L93HB12977
- 1986 MERKUR, 2 Door, 99,702 Miles, VIN: WF1BP80W4GM643826



GARAGE ITEMS * SHOP TOOLS
METAL CAR PORT

- Car Port: 10 Ft. X 14 Ft. Metal Car Port
- Kennedy Rolling Tool Cabinet; MATCO Rolling Tool Cabinet; WEATHERHEAD Multi-Drawer Cabinet; Miller Welder; 2-Ton Chain Hoist; Spray Tech Pain Sprayer; Sockets; Wrenches; Power Tools; Barrel Cart; Jack Stands; Old Mercury 45 H.P. Boat Motor; Chrysler Motor (413) V-8; Single Axle Trailer; Storage Racks; Other Shop Related Items; Misc. Items found at a repair shop!
- Lawn Mower: Craftsman 20 H.P. - 42" Cut Mower



HOUSEHOLD GOODS * FURNITURE
COLLECTIBLES

- Recliner * Imitation Fireplace * Chest of Drawers * Knee Hole Desk * Cedar Chest * Dresser w/Mirror * Single Bed * Full Bed * Queen Size Bed * Glassware * Collectibles * Pots and Pans * Plus Other Misc. Household Items.

PERSONAL PROPERTY TERMS: CASH, Good Check or Credit/Debit Card with Proper I.D. - Not responsible for accidents or goods after sold. All items are being sold in "AS-IS" condition. Announcements made day of auction supersede any printed material. Pre-View morning of the Auction.

ESTATE OF:
Gerald E. Parrigin
Stacey Nutting, P.R.
 188 S. Paw Paw St.
 Coloma, MI 49038



Lunch Box by Celena

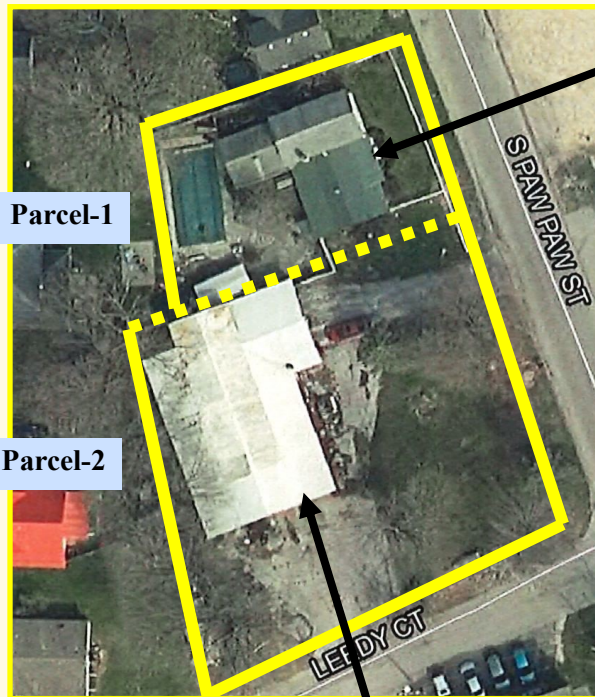
GLASSMAN AUCTION SERVICE

AUCTIONEERS & REAL ESTATE
 P.O. Box 315 * 6815 E. Main St. * Eau Claire, MI 49111
Manager: John Glassman 269-757-3315
 www.glassmanauctions.com
269- 757-3315



Real Estate Terms: \$5,000 Non-Refundable Deposit Day Of Auction, Balance Due In 30 Days. Transfer with New Deed and Title Insurance. Sold in "AS-IS" Condition. 10% "Buyer's-Premium" added to final accepted bid to get contract price. Buyer to Pay for Closing Fee, Recording Fees and Any Fees Required by Their Lender, If Any. Announcements Made Day of Auction Supersede Any Printed Material. Contact City of Coloma for Property Use and Zoning. Offers are subject to P.R. Approval. Any items left at closing are considered abandoned and the new buyers responsibility to clean out. Auctioneer reserves the right to offer together or in 2 parcels.

REAL ESTATE
 Offered at 12:30 P.M.
 Offered Together Or in 2 Parcels



Parcel #1
188 S. Paw Paw St.
 -3 Bedroom 2 Bathroom Home (Approx. 1,900 St. Ft.)
Appliances Included: Stove, Refrigerator, Freezer, Washer & Dryer
 -Partial Basement
 -Gas Heat w/Central Air
 -City Water & Sewer
 -Inground Pool
 -City of Coloma/Berrien County
 -Land Use (Residential Improved)
 -#11-60-0340-0015-00-3
 -2023 Annual Taxes \$1,542
-Assessor Value \$142,800

Open House
Thurs. Sept. 12
12 Noon - 1PM



Parcel #2
250 S. Paw Paw St.
 -Partially Insulated Shop (Approx. 3,200 Sq. Ft.)
w/Attached 2 Car Garage, Plus 1 Bathroom
 -3 Overhead Doors
 -Ceiling Gas Heat Unit
 -City Water & Sewer
 -City of Coloma/ Berrien County
 -Land Use (Business Improved)
 -#11-60-0340-0016-00-0
 -2023 Annual Taxes \$3,090
-Assessor Value \$140,600

Open House
Thurs. Sept. 12
12 Noon - 1PM



Open House
Thurs. Sept. 12
12 Noon - 1PM