



Former Deerpath Recyclers



# LIQUIDATION AUCTION

## Friday - May 12 at 9:30 A.M.

Located at 56625 Woodhouse Dr. - Dowagiac, MI 49047

Located in the Dowagiac City Industrial Park just East of M-51



### LOADERS \* FORKLIFT \* SKID-STEER

### SHEAR \* SEMI TRUCK \* TRAILERS

-2014 CAT TL6420 Telehandler w/Forks & Clam Bucket, SN-THG01018, Approx. 4,000 Hours

-DAEWOO Mega-200WA Loader, Quick Attachments: Forks, Root Rake, Bucket

-TOYOTA - LP Shop Forklift, SN-10699, Model-8FGCU18

-2008 CASE SR-175 Skid-Steer, NCM452008, 9,412 Hrs.

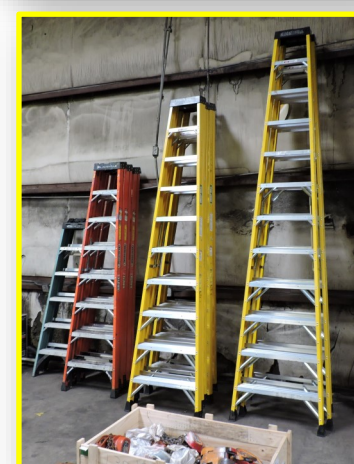
-2001 IH Semi-Tractor, VIN-1HSHBAHN21H398034

-1994 DORSEY 53 Ft. Semi-Trailer

-2001 Great Dane 8 Ft X 28 Ft. Office Trailer

-EMI Load Luger Equipment Trailer, Goose Neck, 2 Axles 24 Ft. Bed, 32 Ft. Length to End

-Excavator w/LaBounty Shear Attachment



### INDUSTRIAL RELATED ITEMS

### SHOP TOOLS \* SCRAP IRON \* SMALL ITEMS

-Job Boxes \* Assortment of Cables \* Vise Clamps \* Pully Blocks \* Assortment of Electric Motors \* Port-A-Powers \* Bearings \* Chain Falls \* Cement Mixers \* Hydraulic Power Packs \* Knocking Wrenches \* Grinders \* Pipe Stands \* Air Arcs \* Welding Rod Dryer \* Assortment of New Drop Lights \* New Gloves \* Assortment of Electric Cords \* Welding Leads \* Assortments of Hard Hats \* Assortment of Step Ladders \* New Cutting Torch Hoses \* Wisconsin Motor \* Rubber Mats \* Steel Steps \* Trailer Parts \* Mounted Semi Tires \* Rims \* SEGA Vending Machine Model-SM23 \* Steel Bench w/Vise \* Plus Much More Found Around Commercial/Industrial Site!!

**TERMS:** Cash, Good Check, Credit/Debit Cards w/5% Fee. All items are sold in "AS-IS" condition. No items removed until settled for. Not responsible for accidents or goods after sold. Removal is the buyers responsibility at their own risk. Removal day of auction and Saturday, other days announced at the auction.



### PRE-VIEW

Thursday May 11

8:00 A.M. to 1:00 P.M.

### PRE-VIEW

Thursday May 11

8:00 A.M. to 1:00 P.M.

### GLASSMAN AUCTION SERVICE

P.O. Box 315 \* 6815 E. Main St.

Eau Claire, MI 49111

John Glassman (269) 757-3315

www.glassmanauctions.com

www.auctionzip.com (or) www.gotoauction.com



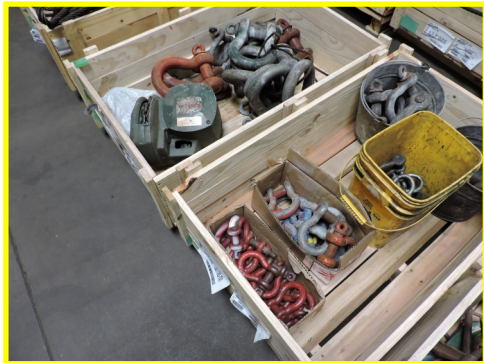
Lunch Box by "Celena"

FORMER

## DEERPATH RECYCLERS

56625 Woodhouse Drive

Dowagiac, MI 49047



## A Few Pictures Showing Items For Auction!

