

Estate Auction

FRIDAY - OCTOBER 14 AT 10:30 A.M.

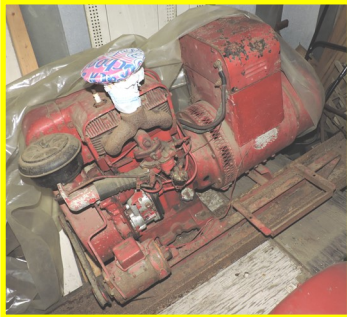
Located at 7293 Red Arrow Hwy. - Watervliet, MI
Between Watervliet and Coloma, MI on Red Arrow Hwy.



**MOTORCYCLE * MOWERS
 SHOP TOOLS * GARAGE ITEMS**
 -Kawasaki 90 Bushmaster Motorcycle * Assortment of Riding Lawn Mowers * Reel Type Mower * Log Splitter * Portable Welder * Sea-King 5 H.P. Boat Motor * Floor Model Drill Press * Grinder * Tool Boxes * Hand Tools * Assortment of Motors * Shop Heater * Snow Blower * Steel "A" Frame * Scrap Iron Pieces * Small Lawn Sprayer * Floor Model Press * Case 155 Lawn Tractor (Needs Repair) * Parts Bin * Lawn Mower Parts * Weed Trimmers * Stick Welder * Air Compressor * Plus Much More!!



HOUSEHOLD ITEMS * COLLECTIBLES
 -Bookcase * Sofa Hide-A-Bed * Recliner Chair * End Tables * Corner Cabinet * Dining Room Table w/Chairs * Upright Freezer * Glassware * Collectibles * Hall Tree * Tables * Vases * Milk Can * Old Items * Bicycles * Western Flyer Bicycle * Wire Lockers * Small Collectibles * Plus More!!



FRONT VIEW



LARGE BARN



2 CAR GARAGE



2 BAY SHOP W/AIR COMPRESSOR



RR Track

1.90 ACRES

1 ACRE

RED ARROW HWY

AERIAL VIEW



Buy now for \$250,000 * Taking Offers
2.90 Acre in 2 Parcels

- 2 Bedrooms and 1 Bath Home
- Kitchen Open to Back Dining Room
- Front Porch w/Ramp
- Full Basement
- 2 Door Detached Garage
- 2 Bay Garage/Shop w/Air Compressor
- Large Storage Barn w/Concrete Floor
- Other Small Storage Sheds
- Watervliet Twp./Watervliet Schools
- #11-21-0021-0010-00-6 (Class-401) 1.90 Acres
- Taxes: Summer \$897.01 Winter \$536.60
- #11-21-0022-0066-01-8 (Class-401) 1 Acre
- Taxes: Summer \$76.51 Winter \$45.63

TERMS: CASH, Good Check or Credit/Debit Card with Proper I.D. - Not responsible for accidents or goods after sold. All items are being sold in "AS-IS" condition. Announcements made day of auction supersede any printed material. Pre-View morning of the Auction.

ESTATE OF:
Joseph & Phyllis Philyaw
 7293 Red Arrow Hwy.
 Watervliet, MI 49098

GLASSMAN AUCTION SERVICE
 AUCTIONEERS & REAL ESTATE
 P.O. Box 315 * 6815 E. Main St. * Eau Claire, MI 49111
 Manager: John Glassman 269-757-3315
 www.glassmanauctions.com
269- 757-3315



ANNA GLASSMAN

Real Estate Terms: \$5,000 Non-Refundable Deposit Day Of Auction, Balance Due In 30 Days. Transfer with New Deed and Title Insurance. Sold in "AS-IS" Condition. Buyer to Pay for Closing Fee, Recording Fees and Any Fees Required by Their Lender, If Any. Announcements Made Day of Auction Supersede Any Printed Material. Contact Township of Watervliet for Property Use and Zoning. Offers are subject to Estate Approval.