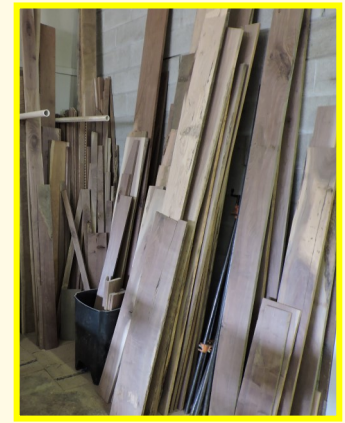
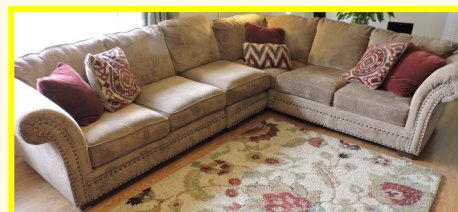
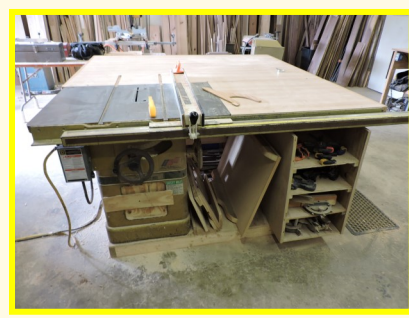


Estate Auction

THURSDAY - MARCH 31 AT 10:30 A.M.

Located at 2764 Yore Ave. - Sodus, MI 49126
South of Napier Ave. on Yore Ave.



VAN * MOWER * TRAILER
 -2006 Dodge Grand Caravan, 180,000 Miles
 -TORO Z-5000 Zero Turn Mower w/Bagger,
 KOHLER Courage 21 Motor
 -Single Axle Trailer w/Drop Down Ramp

WOOD SHOP TOOLS * GARAGE ITEMS
ASSORTMENT OF LUMBER
 -JET 6" Jointer * 18" Band Saw * BELSAW Planer/Molder, 5 H.P.
 * DeWalt Miter Saw * Belt/Disc Sander * Delta Bench Oscillating
 Spindle Sander * Rockwell Model 9 Contractor's Saw * Rolling
 Scaffolding * Power Hand Tools * Bar Clamps * Delta Floor Model
 Drill Press * Portable Air Compressors * Metal Rack * Chain Saw
 * Weed Eater * Powermatic Table Saw w/Shop Made Table Guide *
 Misc. Wood Working Tools. **TOO MANY ITEMS TO LIST!**
LARGE ASSORTMENT OF LUMBER: To include
 rough sawn, Walnut, Oak & Poplar, Etc.

LONG GUNS * HUNTING RELATED * FISHING ITEMS
GUNS SELL AT 11:30 A.M.
 -Higgins 16 Ga. Model-583.5 * Winchester 12 Ga. Pump
 Model-97 * Stevens .22 Short Model 87A * Marlin/
 Glenfield .22 Cal. Mode-60 * Wards Western Field 20 Ga.
 Bolt Action * Ithaca 410 Single Shot Model-66 * Champi-
 on 410 Single Shot * Favorite .22 w/Octagon Barrel * Re-
 mington .177 Air Rifle Model-77 * Crossman .22 Cal. Ri-
 fle * Daisy BB Rifle Model-36 * Ammunition * Hunting
 Clothes * Decoys * Fishing Tackle Boxes * Fishing Lures
 * Fishing Rods & Reels.

FURNITURE * HOUSEHOLD ITEMS
 -AMISH Made OAK Table w/8 Chairs & 8 Leaves * China Cab-
 inet * Section Couch * (2) Recliner Chairs * King Size Bed * Chest
 of Drawers * Queen Size Bed * Single Bed * Antique Bed * FU-
 TON * Hide-A-Bed * Chest of Drawers * Flat Screen T.V. * Cab-
 inets * Linens * Books * Dishes * Glassware * Gas Grill * Schwinn
 Journey 2.5 Exercise Bike * Dehumidifier * Collectibles.

WASHER & DRYER:
 Maytag High Efficiency Model:
 Bravos-X Automatic Washer &
 Electric Dryer.



FRONT VIEW



BACK VIEW



50' X 70' GARAGE/SHOP AND STORAGE

Real Estate Offered At 11:30 A.M.
2.44 Acre Parcel
6 Bedrooms * Hardwood Floors
-3 Bedrooms & 2 Bathrooms Main Floor Brick Home
3 Bedrooms & 1 Bath in Basement (No Egress)
 -Full Basement Partially Finished
 -Updated Kitchen w/Whirlpool Appliances
(Refrigerator, Glass Cook Top, Dishwasher, Built-In Oven)
 -See Through Wood Burning Fireplace
 -Nat. Gas Heat/Central Air
(New Furnace 2021)
 -50' X 70' Block Garage/Shop
 -#11-19-0003-0014-05-0 (401 Residential)
 -2021 Taxes: Summer \$826.28, Winter \$654.75
OPEN HOUSE - WEDNESDAY - MARCH 30
12:00 Noon to 1:00 P.M.



**TERMS: CASH, Good Check or Credit/Debit Card with
 Proper I.D. - Not responsible for accidents or goods after sold. All items
 are being sold in "AS-IS" condition. Announcements made day of auction
 supersede any printed material. Pre-View morning of the Auction.**

ESTATE OF:
Clifton & Alice Clanton
2764 Yore Ave.
Sodus, MI 49126



Lunch Box
 by "Celena"

**GLASSMAN AUCTION
 SERVICE**
 AUCTIONEERS & REAL ESTATE
 P.O. Box 315 * 6815 E. Main St. * Eau Claire, MI 49111
Manager: John Glassman 269-757-3315
 www.glassmanauctions.com
269- 757-3315



Real Estate Terms: \$5,000 Non-Refundable Deposit Day Of Auction,
 Balance Due In 30 Days. Transfer with New Deed and Title Insurance. Sold in
 "AS-IS" Condition. Buyer to Pay for Closing Fee, Recording Fees and Any
 Fees Required by Their Lender, If Any. 10% "BUYER'S-PREMIUM" Add-
 ed to final accepted bid to get contract price. Announcements Made Day of Auc-
 tion Supersede Any Printed Material. Contact Township of Sodus for Property
 Use and Zoning. Offers are subject to Estate Approval.



GLASSMAN
REAL ESTATE

ANNA GLASSMAN
REALTOR®

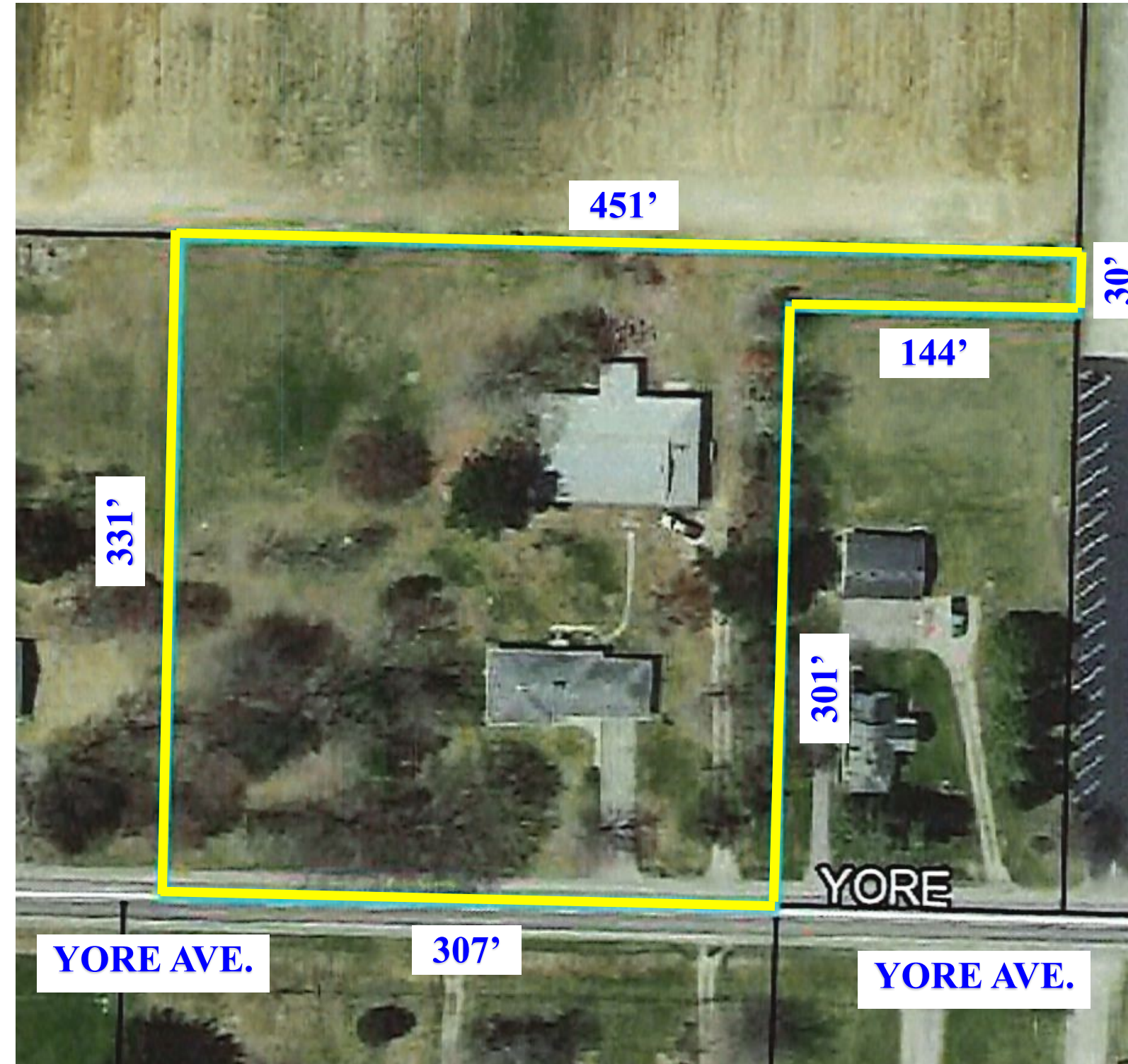
(269) 757-6057

annaglassman1@gmail.com
www.GlassmanRE.com
6815 E Main St
Eau Claire, MI 49111

SPECIALIZING IN
ESTATE SALES &
AGRICULTURAL SALES




Aerial View * 2.44 Acres +/-



Real Estate Offered At 11:30 A.M.

2.44 Acre Parcel

6 Bedrooms * Hardwood Floors

- 3 Bedrooms & 2 Bathrooms Main Floor Brick Home
- 3 Bedrooms & 1 Bathroom in Basement (No Egress)
- Full Basement Partially Finished
- Updated Kitchen w/Whirlpool Appliances
(Refrigerator, Glass Cook Top, Dishwasher, Built-In Oven)
- See Through Wood Burning Fireplace
- Nat. Gas Heat/Central Air
(New Furnace 2021)
- 50' X 70' Block Garage/Shop
- #11-19-0003-0014-05-0 (401 Residential)
- 2021 Taxes: Summer \$826.28, Winter \$654.75

OPEN HOUSE - WEDNESDAY - MARCH 30

12:00 Noon to 1:00 P.M.

Real Estate Terms: \$5,000 Non-Refundable Deposit Day Of Auction, Balance Due In 30 Days. Transfer with New Deed and Title Insurance. Sold in "AS-IS" Condition. **Buyer to Pay for Closing Fee, Recording Fees and Any Fees Required by Their Lender, If Any. 10% "BUYER'S-PREMIUM"** Added to final accepted bid to get contract price. Announcements Made Day of Auction Supersede Any Printed Material. **Contact Township of Sodus for Property Use and Zoning. Offers are subject to Estate Approval. Dimensions above are just approximate.**