

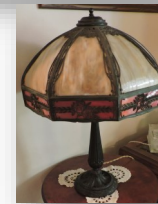
Sold Home!

Estate Auction

SATURDAY - SEPTEMBER 11 AT 10:00 A.M.

Located at 2003 Paw Paw Ave. - Benton Harbor, MI 49022

East of M-63 (Blue Star Highway) on Paw Paw Ave.



8-N TRACTOR * TRUCK * TRAILER * FISHING BOAT

- Ford 8-N Tractor (Paint JD Green)
- 1988 F-350 Dully Truck, Diesel, 185,000 Miles
- 16 Ft. Aluminum L & S Lines MFG. Tandem Axle Trailer
- 14 Ft. Aluminum Fishing Boat w/20 H.P. Merc-Motor
- 1993 VOLVO Station Wagon
- Wood Corn Crib



FISHING RELATED * GARAGE ITEMS * MINI-BIKES

- Fishing Poles * Fishing Tackle * Assorted Tackle Boxes * Assortment of Fish Lures * Lanterns * Aluminum Canoe * Johnson 3 H.P. Boat Motor * Johnson 7-1/2 H.P. Boat Motor * Evinrude Fold Up Boat Motor * Large Air Compressor * Tools * Shop Tools * Power Tools * Hunting Cloths * Troy-Bilt Tiller * Wood Working Tools * So Much Stuff! Building's Full of Items!
- Mini-Bikes: 1973 SUZUKI RV-125 w/2,173 Miles * Honda QA-50 Mini-Bike w/Extra Parts * 2 Stroke Mini-Bike * YAMAHA "Chappy".

HOUSEHOLD ITEMS * ANTIQUES * COLLECTIBLES

- Curved Glass China Cabinet * Antique Wood Working Bench * Gingerbread Clock * Cast Iron Dog * Grizzly Bear by A. Moreau #24 of 50 * Leaded Glass Lamp * Kellogg Wall Crank Phone * Bookcase * WW-II Helmet * Old Books * Norman Rockwell Plates * Mounted Deer Head * Mounted Squirrel * Commode * Antique 8 Drawer Spool Cabinet * Wall Mount Coffee Grinder * Roll Top Desk * Secretary Desk w/Bookcase Top * Lead Glass Table Lamps * Depression Glass * End Tables * Old & Collector Items * Cast Iron Dog Door Stop * Bookcase * Pictures * Pottery Vase * Small Collectibles * Plus More!

LONG GUNS

SELLING AT 11:00 A.M.

- 1) Savage .22 Winchester MAG, Bolt Action w/Scope
- 2) CZ 455 Bolt Action .22 Cal. w/Scope
- 3) Weatherby .22 Cal. Long Rifle w/Scope
- 4) Marlin .22 WMR Model-783, Bolt Action w/Scope
- 5) Mossberg 410 Pump, Model 500-E
- 6) Remington 30-06 Rifle, Model-700 w/Scope
- 7) IZHMASH 410 w/Clip, Solid Black
- 8) GAMO Pellet Rifle, Made in Spain
- 9) Pellet Rifle, Unknown Name
- 10) J.C. Higgins .22 Cal. Model 31 w/Weaver Scope
- 11) Norinco JW Billerica .22 Military Style
- 12) Mossberg 12 Ga. Model-835, Ulti-Mag
- 13) Winchester .22 Short, Model-60A, Bolt Action
- 14) RUGER Model 10-22 Carbine w/Rotary Clip
- 15) Savage .22 Cal. 410 Over/Under, Model-24
- 16) RUGER .223 Mini-14 w/Clip
- 17) Ithica 12 Ga. Pump, Model 37
- 18) Marlin .22 Cal., Model-39A, Lever Action
- 19) Crossman .22 Pellet Rifle, Bolt Action
- 20) Savage Model 99 w/Scope, 308 Winchester
- 21) Winchester Model 190 (.22 Long or LR)
- 22) Walther .22 Rifle w/Scope
- 23) Winchester 12 Ga. Pump, Model-12
- 24) Husqvarna 270 WIN w/Redfield Scope
- 25) Springfield Armory 30 Cal. M-1 (WW-II)
- 26) Remington MAGNUM 12 Ga. Pump, Model-870

BOXES OF AMMO * KNIFE COLLECTION

- Assortment of Shells and AMMO
- Over 100 Knives, Pocket Knives, Filet Knives, Etc. (Western, Case, Buck, Browning, Remington, Puma, Etc.)



ESTATE OF

FRANK ANZALONE

2003 Paw Paw Ave.

Benton Harbor, MI 49022

TERMS: CASH, Good Check or Credit/Debit Card with Proper I.D. - Not responsible for accidents or goods after sold. All items are being sold in "AS-IS" condition. Announcements made day of auction supersede any printed material. Pre-View morning of the Auction.



Lunch Box by "Celena"

GLASSMAN AUCTION SERVICE

AUCTIONEERS & REAL ESTATE

P.O. Box 315 * 6815 E. Main St.

Eau Claire, MI 49111

John Glassman 269-757-3315

www.glassmanauctions.com

www.auctionzip.com