

LIVE WEBCAST AUCTION

PLANT CLOSED

purple

Grantsville (Salt Lake City Area), Utah 84029

SALE DATE: THURSDAY, FEBRUARY 13TH STARTING AT 9:00 AM LOCAL

INSPECTION: Day Prior from 10:00 AM to 4:00 PM or by appointment with jeffjr@cia-industrial.com



NEW
2019

Plastic Shredding and Grinding Line Including 200-HP and 50-HP Rapid



NEW
2015

FIVE
AXIS

1,400 HOURS

AWEA Model LP-4025YZF Bridge Type 5-Face CNC Machining Center



1,800 HOURS

NEW
2019

Haas Model VF-9/40 CNC Vertical Machining Center



(6) 6" x 280" Barrel Single Screw Extruders, 300-HP and 450-KW Drives



NEW
2019

(2) 160 Ton Trane Model RTWD-160F Helical Rotary Chillers

PURPLE INNOVATION



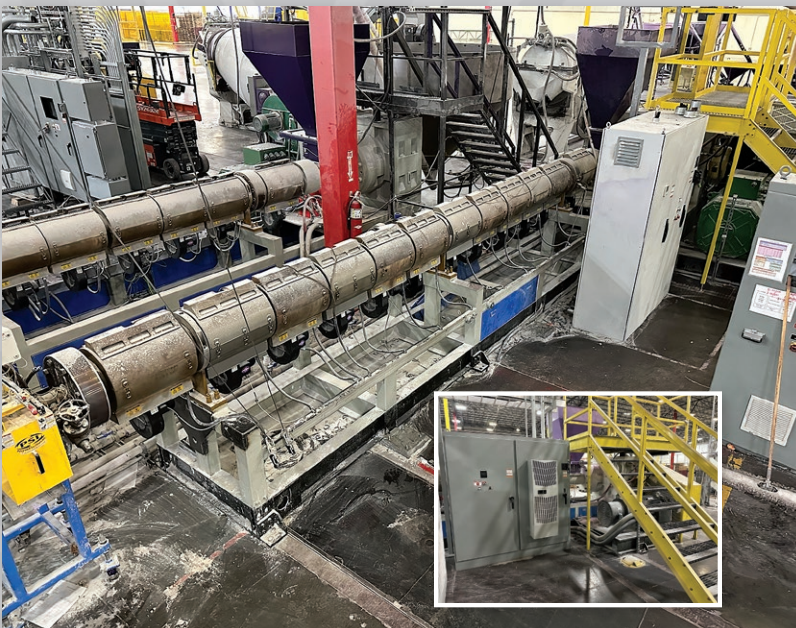
(2) 200-HP Rapid Model 600-90 Plastic Granulators, (1) Never Installed



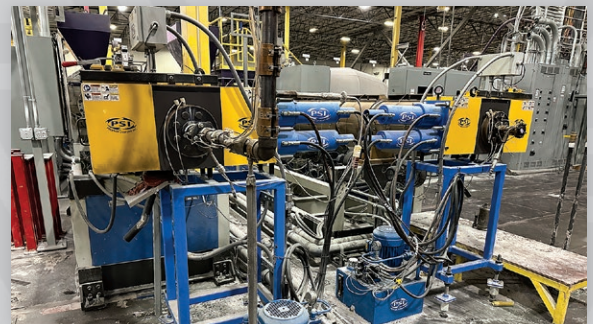
60-HP Weima Single Shaft Shredder



Never Installed 200-HP Rapid Granulator



(6) 6" x 280" Barrel Single Screw Extruders, 300-HP and 450-KW Drives



(6) PSI Polymer Systems Screen Changers



(6) 6" x 280" Barrel Single Screw Extruders



(2) C3 Mattress Rollpack Lines, 106" Wide, Compression Station, Transfer, Coiler and Packer



Eastman CRA-120 Cloth Spreader



Edge Sweets WHDS-54S Saw

THURSDAY, FEBRUARY 13TH - 9:00 AM LOCAL

GRINDERS, SHREDDERS AND CONVEYORS

- (2) 200-HP Rapid Model 600-90 Plastic Granulators, (1) Never Installed (New 2018)
- 60-HP Weima Model WMS-1000-HYDRO Single Shaft Hydraulic Shredder (New 2019)
- 55 KW Beion Single Shaft Shredder (New 2016)
- (10) Various Rubber Belt Incline Conveyors

EXTRUDERS, SCREEN CHANGERS AND PARTS

- (6) 8" x 280" Barrel Single Screw Extruders; (3) 300-HP AC Drives, (3) 450-KW DC Drives (2015 and Newer)
- (6) PSI Polymer Systems Model CSC-T16LV Hydraulic Screen Changers (2015 and Newer)
- Extruder Spare Parts Including Screws, Motors, Gear Boxes and Electrical

BRIDGE TYPE MACHINING CENTERS, 5-AXIS AND 3-AXIS

- AWEA Model LP-4025YZF Bridge Type 5-Face CNC Machining Center, Approx. 1,400 Cutting Hours, 4th/5th Axis Head, 157" x 94" Table (New 2015)
- Mighty Viper Model PRO-3210AG Bridge Type Three-Axis CNC Machining Center, Right Angle Head, 4th Axis Indexer, 80" x 120" Table (New 2011)

HAAS CNC MACHINERY

- Haas Model VF-9/40 CNC Vertical Machining Center, Approx. 1,800 Cutting Hours, Loaded w. Options (New 2019)
- Haas Model ST-15 Two-Axis CNC Lathe, Approx. 140 Cutting Hours (New 9/2021)

MATTRESS MANUFACTURING EQUIPMENT

- (2) C3 Mattress Rollpack Lines, 106" Wide, Compression Station, Transfer, Coiler and Packer (New 2019)
- (2) C3 Mattress Electric Screw Type Compression Stations (New 2019)
- (2) C3 Mattress Pass Thru Glue Spreader Rollers (New 2019)
- 2020 - Eastman Pacemaker Model CRA-120 Cloth Spreader (New 2020)
- 54" x 30" Edge Sweets Model WHDS-54S Horizontal Foam Band Saw
- (2) 89" Wide Quarrata Furniture Model Sahara IRD Infra-Red Drying Tunnels

CHILLER SYSTEM

- (2) 160 Ton Trane Model RTWD-160F Helical Rotary Water-Cooled Liquid Chillers (New 2019)
- (2) Conair Model S-6FD-090.1D/2x4 V-Shape Dry Coolers (New 2019)
- Conair Model PD20-20 Skid Mount Pump System, (2) 20-HP Pumps (New 2019)
- (2) Synergy Model BCF-8-4040AS Reverse Osmosis Systems
- Mueller Heat Exchanger, Pumps, Tanks, Controls

MATERIAL BLENDING, MIXING, HANDLING AND INJECTION MOLDING

- (3) 610 Ton PowerJet Model BJ560-S6 Plastic Injection Molding Machines (New 2017)
- 6 Cu. Ft. Marion Model BPC-42-72-UR9C Stainless Steel Horizontal Ribbon Blender w/ Agitators, Hopper Loader, Stand and PLC (New 2010)
- 6 Cu. Ft. Marion Model BPC-42-72-UR9 Horizontal Ribbon Blender (New 2020)
- Hapman Two-Station Super Sack Loading System
- (10) Skid Mount 50-HP Hydraulic and Direct Drive Concrete Truck Style Mixers (New Approx. 2019)
- (10) 8' Dia. And 4' Dia. Portable Frame Mount Conical Hoppers w/ Auger Offload Conveyors
- (6) 12.5 Cu. Ft. IMER Workman II 350 Multi-Mixer Concrete / Mortar Mixers

TOOLROOM MACHINERY AND FADAL VMC'S

- (2) Fadal Model VMC6030HT CNC VMC's; (1) w. Updated Control
- Fadal Model VMC15RT CNC VMC
- 24" x 160" Leblond Medium Engine Lathe
- (5) Precision Drilled (Demmler Style) Welding Tables
- Mills, Lathes, Saws, Drills, Grinders, Tooling and Accessories

BRIDGE CRANE SYSTEM

- 5 Ton x 33' Approx. Span x 150' Approx. Long Free-Standing Overhead Bridge Crane System (New 2019)

SHOP EQUIPMENT

- 100 HP Gardner Denver Model ST75-100G2B Air Compressor (New 2019)
- 1/2 Ton x 20' Arm Gorbel Model FS300 Free-Standing Jib Crane
- Baler, Box Taper, Conair Thermolators
- (100+) Lots Mostly 2019 Very Clean Shop Equipment

SPARE PARTS AND ELECTRICAL

- Large Quantity Spare Parts Including Electric Control Panels w. Components, Electric Motors, Drives, Blowers, Pumps, Cylinders, Electrical Cabinets and Related



**Mighty Viper Model PRO-3210AG
Bridge Type CNC VMC**



140 HOURS

**Haas Model ST-15 Two-Axis
CNC Chucker**



Super Sack Loading System



**Marion Stainless
Steel Ribbon
Blender**



**(10) Skid Mount 50-HP
Concrete Truck Style Mixers**



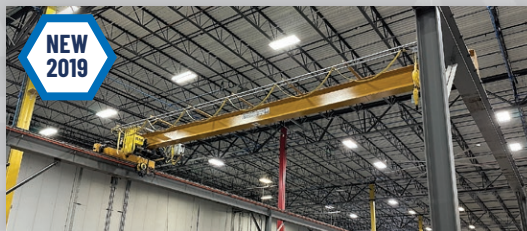
Complete Chiller System w/ (2) 160 Ton Trane Chillers, Towers, Tanks and Pumps



**5 Ton x 33' x 150' Free-Standing Overhead
Bridge Crane**



**8' Dia. Portable
Conical Hoppers**



(3) 610 Ton PowerJet Injection Molding Machines



**75-HP 3-Pump
Hydraulic Systems**



Spare Motors



Electric Panels Loaded w/ Components

— LIVE WEBCAST —
AUCTION

PLANT CLOSED

PURPLE INNOVATION

Grantsville (Salt Lake City Area), Utah 84029

SALE DATE: THURSDAY, FEBRUARY 13TH
STARTING AT 9:00 AM LOCAL

INSPECTION: Day Prior from 10:00 AM to 4:00 PM or
by appointment with jeffjr@cia-industrial.com



CIA-INDUSTRIAL.COM
2020 DUNLAP ST.
CINCINNATI, OH 45214
513.241.9701



2019 Haas VF-9 VMC



2019 Chiller System



200-HP Granulator

FIRST CLASS MAIL!

PRE-SORT
FIRST CLASS
U.S. POSTAGE
PAID
CINCINNATI, OHIO
PERMIT NO. 3593



Important Mail

TO BE DIRECTED TO THE ATTENTION OF EXECUTIVE PERSONNEL

• SALE DATE: THURSDAY, FEBRUARY 13TH STARTING AT 9:00 AM LOCAL •
LIVE WEBCAST AUCTION

PLANT CLOSED

PURPLE INNOVATION

Grantsville (Salt Lake City Area), Utah 84029

IMPORTANT NOTICE:

Although information has been obtained from sources deemed reliable, the auctioneer makes no warranty or guarantee, expressed or implied, as to the accuracy of the information herein contained. It is for this reason that buyers should avail themselves of the opportunity to make inspection prior to the sale. This brochure is intended to provide general information of the equipment being offered and is subject to errors, omissions, additions or deletions. Please check with the Auctioneer's Office for a final listing. Items offered may or may not necessarily be sold as described and/or photographed in this brochure.

AUCTIONEERS:

Cincinnati Industrial Auctioneers, Inc. - License No. 63198310439
CIA Industrial, LLC - License No. 2024000102
Jeffrey L. Luggen - License No. 57198333789
Joseph M. Luggen - License No. 2010000019

ASSOCIATIONS:



TERMS OF SALE:

All equipment described herein will be sold "as is", "where is" to the highest bidder or bidders for cash in accordance with our Terms & Conditions. A deposit may be required to bid. All sales are subject to state and/or local taxes unless a signed exemption form is presented at the time of purchase. All sales are final and balance is due within 24 hours of the auction. All bidders must comply with our Terms & Conditions to participate in the auction, which is available on www.cia-industrial.com.

18% BUYERS PREMIUM IN EFFECT FOR ALL PURCHASES

BIDDER INSTRUCTIONS:

All bidders must register for this auction at: www.bidspotter.com.
Please register 24-hours in advance to get through the approval process.



CIA-INDUSTRIAL.COM
2020 DUNLAP ST., CINCINNATI, OH 45214
513.241.9701