

WEBCAST AUCTION OF BRASS ROD MANUFACTURER INCLUDING MEECO 12-ROLL AND 2-ROLL ROTARY BAR STRAIGHTENERS, SCHUMAG COMBINED DRAWING MACHINES, WEAN HYDRAULIC DRAW BENCH, FENN SWAGERS, LARGE OEM PARTS INVENTORY, MAINTENANCE MACHINE SHOP AND SUPPORT EQUIPMENT

BidSpotter.com
See Instructions on Page 4
To Become a Qualified Bidder on the Internet

WEBCAST AUCTION

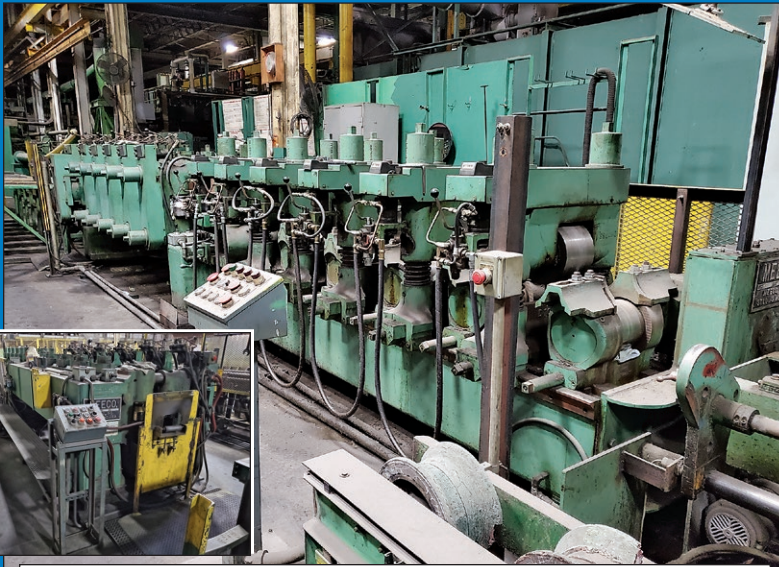
Plant Closed

EXTRUDED METALS, INC.

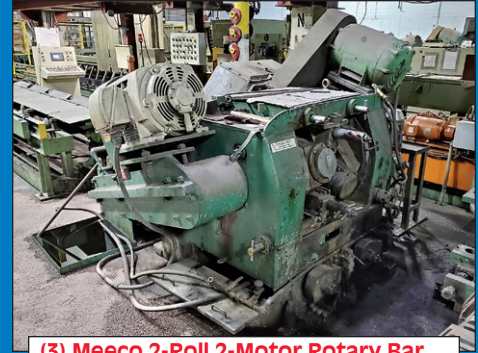
302 Ashfield Street – Belding, Michigan 48809
30 Miles West of Grand Rapids, Michigan

SALE DATE: WEDNESDAY, MARCH 8TH STARTING AT 10:00 AM

INSPECTION: Day Prior from 10:00 AM to 4:00 PM or by appointment with jeffjr@cia-auction.com



Meeco Type 12-12-TPVC Size HD3 12-Roll Rotary Bar Straightener

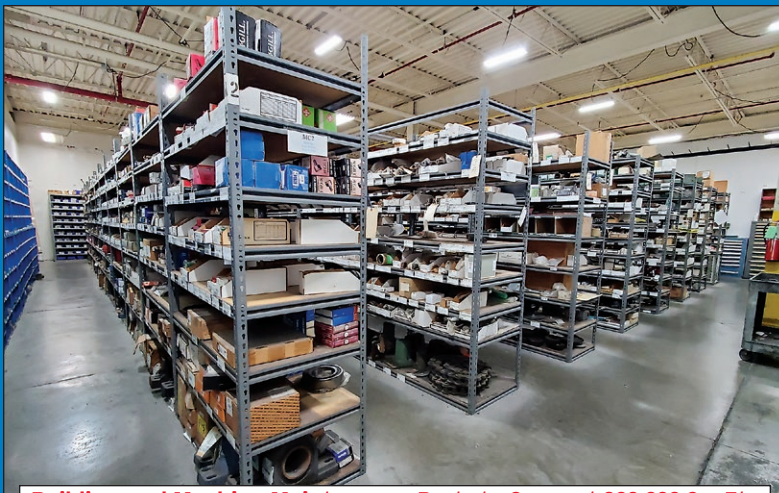


(3) Meeco 2-Roll 2-Motor Rotary Bar Straighteners

46' Stroke



75,000 Lb. Wean Hydraulic Draw Bench, 46' Stroke



Building and Machine Maintenance Parts to Support 200,000 Sq. Ft. Facility



120,000-lb. Truck and Trailer Hydraulic Dump System

Sale Under The Management Of



Myron Bowling Auctioneers
3901 Kraus Lane, Hamilton, Ohio 45014
Phone: 513-738-3311 Fax: 513-738-0221
Myronbowling.com | info@myronbowling.com

In Conjunction With





WEDNESDAY, MARCH 8TH - 10:00 AM



(2) Schumag Model KZ-RP-IB Combined Drawing Lines w/ Bar Chamfering Systems



OCN Model 04-073 Bar Chamfering Line



46' Stroke

75,000 Lb. Wean Hydraulic Draw Bench, 46' Stroke



2002 Heat Pro Die Oven



Tulsa Power V-Pak Decoiler



(4) Fenn 5F Swager Machines



(4) Fenn 5F Swager Machines

ROTARY BAR STRAIGHTENERS

Meeco Type 12-12-TPVC Size HD3 12-Roll 2-Plane Rotary Bar Straightener; s/n AZ12703, 1/2" - 3" Square & Hex or 1" x 4" Flat Leaded Brass Material, 180-FPM, 22,500 Lbs./Hr., Hydraulic Power Vertical & Side Shifting Roll Beds, 50 HP 2-Speed Lincoln Motor 1200/1800 RPM, DRO on Idler Rolls, Automatic Bar Marker, Ampco Lined Guides, Felt Wicking Wipers, Rod Chamfering & Cut To Length Machine w/ Chamfer Table, Electrical Control Panels & Operator Station, Call for build sheet information, Racks Of Dies and Tooling for HD3 Machine (1998)

(3) Meeco 2-Roll 2-Motor Rotary Bar Straighteners, 30-HP and 25-HP Motors

DRAW BENCH

75,000 Lb. Wean Hydraulic Draw Bench; s/n 38566-200, 3-Station Die Unit, Carriage Draw Unit Lincoln Hydraulic Cylinder, 7 1/4" Bore, 46' Stroke, 3,500 PSI, Non-Cushioned Special Mount, MCC & Plc Electrical Cabinets w/ 3,000 Amp Breaker, 43' Carriage C-Frame Bench Bed, HPU, Billy Roll (1982)

36' x 8' Walking Discharge Table; 32" Steel Power Roller Conveyor w/ Steel Deck Between Rollers

COMBINED DRAWING LINES

(2) Schumag Model KZ-RP-IB Combined Drawing Lines; Model KZ-

RP-IB/5 s/n 00080 and Model KZ-RP-IB s/n 06007, Each with Payoff Reels, Coil Opener, Rotary Pre-Straightener, Drawbench, Vertical Straightener, Horizontal Straightener, Flying Shear, (1) 2-Roll Rotary Bar Straightener, Transport Roll, Chamfer Machine, Cut To Length/Chamfer Table & Kick Off System, Kurt Vise Toolpost & Pillow Block Guide Stands, Rittal MCC, PLC, VFD, Servo Drive & Breaker Cabinets, Cooling Units (1998)

Rack Of Dies For Schumag Combined Drawing Lines

BAR CHAMFERING LINE

OCN Model 04-073 Bar Chamfering Line; Brass Cut-to-Length / Chamfering Dual Station Table w/ Auxiliary Services, 19-80mm Dia. Bar Range / 2,400-6,000mm Bar Lengths, No. 2 Frontal Type Cutting Head, 0-30-45° Chamfering Angle, 20 Bars/Min Max., 400 Mm Disc w/ Widia Teeth, Prab Oscillating Conveyor, 10 3/4' x 8' x 6" Deep Trough, 1,000 Lbs./Hr. Capacity

Finished Bar Handling Conveyor

FENN SWAGERS

(4) Fenn 5F Swager Machines

FILTER PRESS

Perrin Filter Press, (30) Press Filters

TRUCK AND TRAILER DUMP SYSTEM

120,000-lb. Truck and Trailer Hydraulic Dump System

OVEN & FURNACE

2002 Heat Pro Model Cb8eth-48-18-48 Die Oven, 800° F Max Temp, 18 Kw Input, Honeywell Dro, Top/Bottom Ovens

Lucifer Model Hl82-K24 Furnace, 2,300-1200°F

FABRICATING MACHINERY

2011 Doring Hytronics De-Coiler (on valve stand)

Tulsa Power V-Pak Decoiler

Straightener (on steel stand)

2-1/4" Bender & 4" Bench Vise (on 96" x 8" x 2" Steel Table)

Greenlee 1-1/4" All-In-One Portable Hydraulic Bender, Metal Case and Sheeves

Koike Ik-12 Max-3 Track Welding w/111" x 60" Steel Burning Table

Lincoln Sp-140t Portable Welder w/ Leads, Ground and Head

Welding Accessories, Tables, Clamps, Tools, Grinders, Torches and Related

TOOLROOM & MAINTENANCE MACHINERY

Leblond Model 2515-20HD 18' Engine Lathe, 15" 3-Jaw Chuck, Tailstock, Cross Slide, Tool Post, (2) Steady Rest, 2" Bar Through Spindle

Wellsaw Model 1000 Horizontal Band Saw

Gtd F225r Straight Cut-Off Saw



Building and Machine Maintenance Parts to Support 200,000 Sq. Ft. Facility

42" Arm x 8" Col. Aaron L3 Radial Arm Drill
 Rockwell Model 20 Vertical Drill Press
 150 Ton Dake Model 42-312 Air-Hydraulic H-Frame Shop Press
 50 Ton Dake Air-Hydraulic H-Frame Shop Press
 Enerpac Hydraulic C-Frame Bench Press, 3/4-HP Hpu (on steel table stand)
 Ridgid 300 Electric Pipe Threader w/ Dies, Ridgid 14i Head
 Ridgid 700 Handheld Electric Pipe Threader
 D.E. Grinders, Sanders, Drills, Saws and Related
 Pneumatic, Power & Hand Tools; 1" Impact Wrenches, Angle Grinders, Screw Guns, Cordless Tools, Saw-Zaws, Channel Locks, Combination & Allen Wrenches, and More

FORKLIFTS

Allis Chalmers 10,000-lb. LP Forklift, Model ACC100; s/n A264029, 2-Stage Mast, Sideshift, Hard Tires
 Hyster 6,650-lb. LP Forklift, Model H70 FT; s/n L177B07921D, New 2006, 3-Stage Mast, Sideshift, Hard Tires
 Toyota 5,000-lb. LP Forklift, Model 8FGU25; s/n 63846, 2-Stage Mast, Sideshift, Hard Tires
 Nissan 5,150-lb. Forklift, Model

MCUL02A331V, s/n CVL02-9Q0340, 3-Stage Mast, Hard Tires
 Flexi 3,310-lb. Forklift, Model EC20; s/n 600 683, 3-Stage Mast, Hard Tires

MATERIAL HANDLING

(20+) Sections Tear Drop Pallet Racking
 (24) Sets of 23' High Double-Sided Structural Cantilever Racks, 27" Arms (each side)

Steel Pipe Roller Extension Stands
 A-Frame Racks and Floor Racks

Custom Forklift Fall Limiter Platform
 Gse 560 Digital Bar Scale, 18'-6" x 15'-1/2" Dia. Half Circle Drop Weigh Table w/18'-6" x 30" Bar Holding Table

2,000-lb Capacity Jesco 1/2 Yard Self-Dumping Hoppers

1,500-lb. Capacity Big Joe Model 1518-R5 Die Lift Cart

500-lb. Capacity Sky Hook Die Crane, Chain Type, (shop cart)

Lifting Fixtures & Rigging Equipment; Custom Horizontal Forklift Boom, Spreader Bars, Chain & Leg Chain, Plate Clamps, Lifting Straps, Cable Slings and More

RAW MATERIAL IN MAINTENANCE SHOP

Quantity of Steel, Copper & Brass Bar Stock, Pipe/Tube Stock and Flat Stock

(on racks and carts)

Steel Sheets and Mesh (on cantilever rack)

LARGE QUANTITY OEM PARTS

Large OEM Parts Crib to Support 200,000 Sq. Ft. Facility; Electrical Equipment, Gears, Platinum Plates, Metal Shelf Units, Chains, Cylinders, Belts, Nozzle Assemblies, Eye Bolts, Solenoids and Much More

Electric Motors up to 200-HP - Vertical & Horizontal Mounts, Gear Boxes & Reducers (on Racks and on Floor)

Large Quantity of Bearings - Timken, Skf, Pillow Blocks and Various Types

Hydraulic Pumps, Cylinder and Valve Assemblies - Water, Filter, Centrifugal and More

Pigeonhole Hardware Bins full of Nuts, Bolts, Washers and Assorted Hardware

SHOP EQUIPMENT

Shop Equipment to Support 200,000 Sq. Ft. Facility; Fireproof Storage Cabinets, Knaack Job Box, Stronghold Shop Cabinets, Rolling Tool Cabinets, Steel U-Frame Material Carts, Flat Carts, Rubbermaid and More, 120" x 87" Tool Cage, Wire Mesh Walls, Quantity of Barrel Pumps, 2-Wheel Truck Dollies, Pneumatic Jack Hammer, Rolling Shop Step Ladders



23' High Double-Sided Structural Cantilever Racks



Forklifts to 10,000 Lb. by Toyota, Hyster and Others



Complete Maintenance Shop, 18' Leblond Engine Lathe, Drills, Grinders, Presses

WEBCAST AUCTION

Plant Closed
EXTRUDED METALS, INC.

302 Ashfield Street
Belding, Michigan 48809
30 Miles West of Grand Rapids, Michigan

SALE DATE:
Wednesday, March 8th
STARTING: 10:00 AM

INSPECTION:
Day Prior from 10:00 AM to 4:00 PM or by
appointment with jeffjr@cia-auction.com



CINCINNATI INDUSTRIAL AUCTIONEERS
auctioneers | appraisers | since 1961

Contact Information
2020 Dunlap St.
Cincinnati, Ohio 45214
Phone 513-241-9701
Fax 513-241-6760
www.cia-auction.com



Meeco 12-Roll Straightener



Meeco 2-Roll Straighteners



OEM Parts Crib



Wean Draw Bench

FIRST CLASS MAIL!

PRE-SORT
FIRST CLASS
U.S. POSTAGE
PAID
CINCINNATI, OHIO
PERMIT NO. 3593

Important Mail

TO BE DIRECTED TO THE ATTENTION
OF EXECUTIVE PERSONNEL



WEDNESDAY, MARCH 8TH

WEBCAST AUCTION

Plant Closed
EXTRUDED METALS, INC.

302 Ashfield Street
Belding, Michigan 48809
30 Miles West of Grand Rapids, Michigan

IMPORTANT NOTICE:

Although information has been obtained from sources deemed reliable, the auctioneer makes no warranty or guarantee, expressed or implied, as to the accuracy of the information herein contained. It is for this reason that buyers should avail themselves of the opportunity to make inspection prior to the sale. This brochure is intended to provide general information of the equipment being offered and is subject to errors, omissions, additions or deletions. Please check with the Auctioneer's Office for a final listing. Items offered may or may not necessarily be sold as described and/or photographed in this brochure.

BIDDER INSTRUCTIONS

All bidders must register for this auction at www.bidspotter.com. Please register 24-hours in advance to get through approval process.



AUCTIONEERS

Tom C. Bowling
Joseph M. Luggen



TERMS OF SALE

All equipment described herein will be sold "as is", "where is" to the highest bidder or bidders for cash in accordance with our regular terms and conditions of sale. Unless other satisfactory arrangements are made, a **25% deposit** in cash, certified or cashier's check payable to Cincinnati Industrial Auctioneers, Inc., **is required on all purchases.** Firm and personal checks accepted only if accompanied by a letter from your bank guaranteeing your funds. All sales are subject to state and/or local taxes unless a signed exemption form is presented at the time of purchase. **All balances are due at the conclusion of the sale.** No merchandise may be removed while the sale is in progress. **All bidders must comply with our Standard Terms of Sale,** copies of which will be available at the sale site or can be obtained from our website.

18% BUYERS PREMIUM IN EFFECT FOR ALL PURCHASES

Sale Under The Management Of



Myron Bowling Auctioneers
3901 Kraus Lane, Hamilton, Ohio 45014
Phone: 513-738-3311 Fax: 513-738-0221
Myronbowling.com | info@myronbowling.com

In Conjunction With

