

WEBCAST AUCTION OF SEAMLESS TUBE MANUFACTURING AND
FOUNDRY EQUIPMENT INCLUDING EXTRUSION PRESSES TO 1,600 TON, BILLET PIERCERS
TO 785 TON, (6) AJAX MAGNETHERMIC MELTING FURNACES TO 20,000 LB., OVENS,
750 KW BACKUP GENERATOR AND SUPPORT EQUIPMENT

BidSpotter.com
See Instructions on Page 4
To Become a Qualified Bidder on the Internet

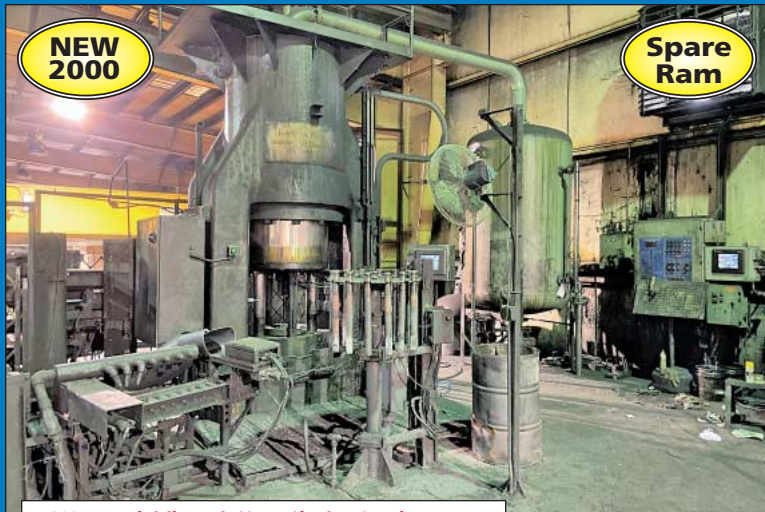
WEBCAST AUCTION

SURPLUS EQUIPMENT FROM PRECISION TUBE

New Market, Virginia 22844
100 Miles West of Washington D.C.

SALE DATE: THURSDAY, JUNE 16TH, STARTING AT 11:00 AM

INSPECTION: By appointment only with jeffjr@cia-auction.com



NEW
2000

Spare
Ram

1,600 Ton Fielding Platt Vertical Extrusion Press



NEW
2000

(3) 10 Ton Ajax Magnetothermic 750 KW
Induction Melting Furnaces



NEW
2005

750 KW Cummins Model DFHA Backup
Generator, 350 Hours (2005)



NEW
2000

785 Ton and 385 Ton Mitchell Double End Billet Piercing Presses



Ajax Magnetothermic Pacer Induction
Heat Power Supplies



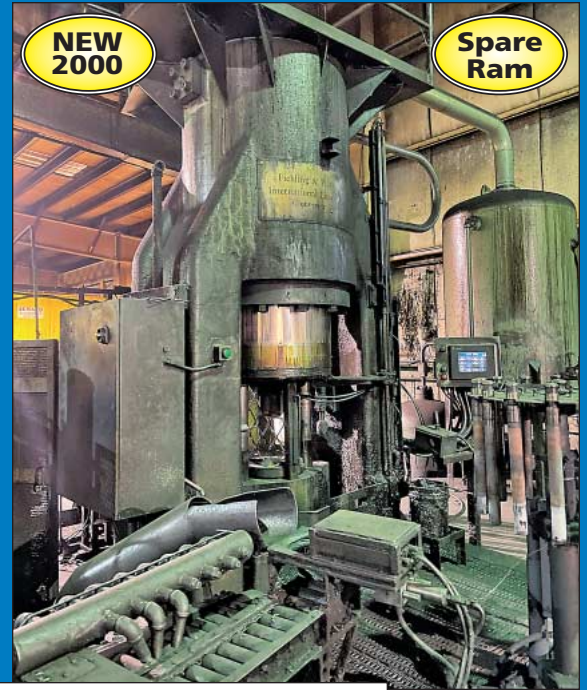
Sale Under The Management Of

CINCINNATI INDUSTRIAL AUCTIONEERS

auctioneers | appraisers | since 1961 | cia-auction.com | info@cia-auction.com
2020 Dunlap St., Cincinnati, Ohio 45214 Phone 513-241-9701 Fax 513-241-6760



THURSDAY, JUNE 16TH - 11:00 AM



1,600 Ton Fielding Platt Vertical Extrusion Press Cell w/ Induction Heat Feed and 150-HP Pumps



(2) 1,000 Ton Fielding Platt Vertical Extrusion Presses

SEAMLESS TUBE CELL 1

785 Ton Mitchell Double End Billet Piercing Press; Rated: 785 Ton @ 5,000 PSI, 5", 6" & 7" Dia. Billets, Length 9" Before 16" After, Extrusion Stroke - 11" Each Side, 3-Station Cam Index Billet Holder, Press Weight 100,000 Lbs., Hydraulic Unit Weight 13,000 Lbs. **(New 2000)**

1,624 Ton Fielding Platt Vertical Water / Hydraulic Extrusion Press for Copper and Brass Tube Press; Elwood Model 2600 Accumulator Control System, 5", 6", & 7" Dia. Billets, 41" Stroke, 37.5" Main Ram Dia., 16" Pressing Stroke, Approx. Press Weight = 100,000 Lbs. **(New 2001)**

750 KW Ajax Magnethermic Pacer Induction Heat Feed w/ (2) Power Supplies; (2) Pacer Power Supplies; s/n H-2N820 w/ Control Cabinet, 1,250 Volt, 12,875 KVA, 10,300 Amp, Heat Exchangers, Pumps **(New 2000)**

(3) 150 HP National Oilwell Model 200T-5M Plunger Pumps and 3,000 PSI Valve; 5" Stroke

Grieve Model B1-850 Electric Furnace; s/n 420080, 4' x 4' x 6' High Chamber, 12" High Cart, Max. Temp. 850 Deg F, 60-KW, Floor w/ Roll Out Cart

200 Ton Mitchel Billet Scalping Machine; s/n BS102, Order No. 00016249,

5", 6" & 7" Dia. Billets, 9" - 14.5" Billet Length **(New 2000)**

30" Dia. Oliver Model 2495 Billet Saw w/ PLC and Dust Collector

SEAMLESS TUBE CELL 2

385 Ton Mitchell Double End Billet Piercing Press; s/n BP-100, Rated: 380 Ton @ 2,987 PSI, Max: 445 Tons @ 3,500 PSI, 5" & 6" Dia. Billets, Billet Lengths 7" Before 10.5" After, Nominal Piercing Punch Sizes: 1.5" Min. 2.5" Max., Extrusion Stroke: 7-3/16" Each Side, 3-Station Cam Index Billet Holder, Hydraulic System w/ (2) 100-HP Motors, Approx. Weights: Press 56,000 Lbs., Hydraulic Unit 7,800 Lbs. **(New 1993)**



1,500 Ton Nordberg 3-Ram Billet Piercing Press



Tooling for Billet Piercers and Extrusion Presses



Ajax Pacer Induction Heat Feeders



380 Ton Mitchell Double End Billet Piercing Press



(6) 150 HP National Oilwell Pumps



Ajax Pacer Induction Heat Feeder Power Supply

SURPLUS EQUIPMENT FROM PRECISION TUBE



(3) 10 Ton Ajax Magnethermic TRT 750 KW Induction Melting Furnaces and Power Supplies

1,000 Ton Feilding Platt Vertical Water / Hydraulic Extrusion Press for Copper and Brass Tube; PLC Control, PB Control Panels, 5" & 6" Dia. x 10" Long Billets, 31" Main Ram Dia., 28" Stroke, 3,000 PSI, 50,700 Lb. Approx. Press Weight

(3) 150 HP National Oilwell Model 200T-5M Plunger Pumps and 3,000 PSI Valve; 5" Stroke

750 KW Ajax Magnethermic Pacer Induction Heat Feed w/ (2) Power Supplies; (2) Pacer Power Supplies; s/n H2K560B, Control Cabinet, 1,250 Volt, 12,875 KVA, 10,300 Amp, Heat Exchangers, Pumps (New 1998)

Bauer Model 1150V High Pressure Compressor, 3,000 PSIG

SEAMLESS TUBE CELL 3

1,500 Ton Nordberg 3-Ram Billet Piercing Press; s/n 14012, Order No. 7014-7631, 1,500-Ton Frame Capacity, 900-Ton Clamp Capacity, 300-Ton Ram Capacity Each, 48" x 45" Die Spacing, 38" Max Daylight, 48" x 45" Clamp Platen, 28" x 23" Extrusion Platen, 5" & 6" Dia. Billets, 15" Clamp Stroke, 18" Extrusion Stroke (Each Side), Approx. Weight 123,260 Lbs.

1,000 Ton Feilding Platt Vertical Water / Hydraulic Extrusion Press for Copper and Brass Tube; PLC Control, PB Control Panels, 5" & 6" Dia. x 10" Long Billets, 31" Main Ram Dia., 28" Stroke, 3,000 PSI, 50,700 Lbs. Approx. Press Weight, Missing National Oilwell Pumps

750 KW Ajax Magnethermic Pacer Induction Heat Feed w/ (2) Power Supplies; (1) Pacer Power Supply; s/n H2K130A, 1,090 Volt, 1,420 Amp, (New 1998), (1) Pacer Power Supply; s/n H2F720AB, 1,250 Volt, 5,812 KVA, 4,650 Amp (New 2012) Both w/ Heat Exchangers, Pumps

Grieve Model WTC-446-650 Electric Furnace; s/n 85116A1005, 4' x 4' x 6' High Chamber, 12" High Cart, Max. Temp. 650 Deg F, 40-KW, Floor w/ Roll Out Cart

BILLET SCALPERS AND SAWS

(2) 170 Ton Mitchel Billet Scalping Machines; s/n's BS100 & BS101, Order No. 5902, 5" & 6" Dia. Billets, 7" - 12" Billet Length (New Late 1990's)

(2) 30" Dia. B&O Automatic Billet Saws, (1) In Back of Plant in Storage Area

MELTING FURNACES

(3) 20,000 Lb. Ajax Magnethermic Model TRI-E75A-46 750-KW Channel Type Induction Melting Furnaces w/ Power Supply & Control; Full Model E75A-46-AIN-C, s/n M2Q150J-1-3, 20,000 Lb. Max Load Copper (5 Ton Heel and 5 Ton Load), 760 Volts, 2,019 KVA, 3,000 Amp, 750 KW, Control Panels w/ AB PLC's, Cooling Pumps w/ Controls (New 2000)

(3) 12,000 Lb. Ajax Magnethermic Model TEF-ECFC-50A 500-KW Channel Type Induction Melt Furnaces w/ Power Supply & Control; Full Model ECFC-50A-46-AIN, s/n M92870, 12,000 Lb. Max Load Copper (2 Ton Heel and 4 Ton Load), 575V, 1102 KVA, 1917 Amp, 500 KW, Control Panels (New 1990)

(3) Approx. 12,000 Lb. Ajax Magnethermic Model E-40A-46-B15 450-KW Channel Type Induction Melt Furnaces w/ Power Supply & Control; s/n M32420, Approx. 12,000 Lb. Max Load Brass (4,800 Lb. Heel and 7,100 Lb. Load), 575V, 1,000 KVA, 1,750 Amp, 500 KW, Control Panels

FURNACE LOADERS

(2) Prentice / Caterpillar Model 2180 440-Volt Stationary Electric Loaders; s/n's 2180-PR63528 & N/A

MISC. FOUNDRY EQUIPMENT

(2) 25-HP Tuthill Pneumax2 Vacuum Pumps

(2) 10-HP DeMarco Model MV10E Max Vac Foundry Vacuums
McGelevan Speedy Melt Model T160 Gas Fired Melting Furnace



(6) 12,000 Lb. Ajax Magnethermic TET 500-KW Induction Melt Furnaces



(2) Modern Equipment Co. Model XH-600-NM-HE Atmospheric Gas Generators; S.O. No. 18434/07806

15 Cu. Ft. Refractory Mixer

CNC LATHE

38" x 108" Danichi Model Mega 95 Flat Bed CNC Lathe; s/n 300063, Fanuc 21T Control, 24" Stroke, 9" Spindle Hole, Machine has been in Storage for Over 2 Years (New 2001)

BACKUP GENERATOR

750 KW Cummins Model DFHA Backup Generator; s/n L050862289, 937-KVA, 277/480 Volt, 1,127 Amps, 783 Starts, 351 Hours, Soundproof Enclosure, Cummins Model QST30 Diesel Engine (New 2005)

COOLING TOWERS AND WATER PUMPS

(5) Various Size Marley and Evapco Cooling Towers

Gorman Rupp Water Pumps to 40-HP

DUST COLLECTORS

150-HP Wheelabrator Bag House Dust Collector & Blower (New 1990)

30-HP Scientific Bag House Dust Collector & Blower (New 2000)



(2) Prentice Cat Model 180 440-Volt Stationary Loaders



(3) Mitchel Billet Scalping Machines to 200-Ton Cap.



150-HP Wheelabrator Bag House Dust Collector & Blower



(2) Grieve Electric Furnaces to 850 Deg.



(7) Various Size Cooling Towers by Evapco and Marley



(3) 30" Dia. B&O Automatic Billet Saws w/ Dust Collectors

WEBCAST AUCTION

SURPLUS EQUIPMENT FROM PRECISION TUBE

New Market, Virginia 22844
100 Miles West of Washington D.C.

SALE DATE:
Thursday, June 16th
STARTING: 11:00 AM

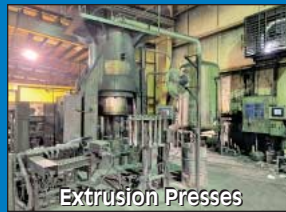
INSPECTION:
By appointment only with
jeffjr@cia-auction.com



CINCINNATI INDUSTRIAL AUCTIONEERS

auctioneers | appraisers | since 1961

Contact Information
2020 Dunlap St.
Cincinnati, Ohio 45214
Phone 513-241-9701
Fax 513-241-6760
www.cia-auction.com



Extrusion Presses



Melting Furnaces



Billet Piercers



750-KW Generator

FIRST CLASS MAIL!

PRE-SORT
FIRST CLASS
U.S. POSTAGE
PAID
CINCINNATI, OHIO
PERMIT NO. 3593

Important Mail

TO BE DIRECTED TO THE ATTENTION
OF EXECUTIVE PERSONNEL

THURSDAY, JUNE 16TH

WEBCAST AUCTION

SURPLUS EQUIPMENT FROM PRECISION TUBE

New Market, Virginia 22844
100 Miles West of Washington D.C.

IMPORTANT NOTICE:

Although information has been obtained from sources deemed reliable, the auctioneer makes no warranty or guarantee, expressed or implied, as to the accuracy of the information herein contained. It is for this reason that buyers should avail themselves of the opportunity to make inspection prior to the sale. This brochure is intended to provide general information of the equipment being offered and is subject to errors, omissions, additions or deletions. Please check with the Auctioneer's Office for a final listing. Items offered may or may not necessarily be sold as described and/or photographed in this brochure.

BIDDER INSTRUCTIONS

> All bidders must register for this auction at www.bidspotter.com. Please register 24-hours in advance to get through approval process.

BidSpotter.com

AUCTIONEERS

Cincinnati Industrial Auctioneers
License No. 2906-000234

Jeffrey Luggen License No. 2905-001388



TERMS OF SALE

All equipment described herein will be sold "as is", "where is" to the highest bidder or bidders for cash in accordance with our regular terms and conditions of sale. Unless other satisfactory arrangements are made, a **25% deposit** in cash, certified or cashier's check payable to Cincinnati Industrial Auctioneers, Inc., **is required on all purchases**. Firm and personal checks accepted only if accompanied by a letter from your bank guaranteeing your funds. All sales are subject to state and/or local taxes unless a signed exemption form is presented at the time of purchase. **All balances are due at the conclusion of the sale**. No merchandise may be removed while the sale is in progress. **All bidders must comply with our Standard Terms of Sale**, copies of which will be available at the sale site or can be obtained from our website.

18% BUYERS PREMIUM IN EFFECT FOR ALL PURCHASES



Sale Under The Management Of

CINCINNATI INDUSTRIAL AUCTIONEERS

auctioneers | appraisers | since 1961 | cia-auction.com | info@cia-auction.com
2020 Dunlap St., Cincinnati, Ohio 45214 Phone 513-241-9701 Fax 513-241-6760