

Public Auction MULTI RESTAURANT

Sale Date:
Tuesday,
February 4,
10:00 A.M.

MASSIVE AUCTION! (4+) Like New National Chain Restaurants Plus Sound & Lighting Equipment! (2) New Glass Door Refrigerators & New Undercounter Ice Maker; Quality Refrigeration, Kitchen & Bar Equipment, Small Appliances, Sinks, S.S. Tables & Racking! Fantastic Booth, Dining, Bar, Lounge & Patio Seating Packages for (800+)! A/V Sound & Lighting Equipment! Huge Qty. Small Wares, Catering & More!

301 S. Lasalle Street, Indianapolis, IN

THIS IS A GOOD ONE! MARK YOUR CALENDAR SO YOU DON'T MISS THIS GREAT AUCTION!



3 RINGS RUNNING!

301 S. Lasalle Street,
Indianapolis, Indiana 46201
317-632-8040 • Fax: 317-632-3945
WWW.CLOFA.NET
E-Mail: INFO@CLOFA.NET



PRELIMINARY LISTING!
VISIT OUR WEBSITE
WWW.CLOFA.NET FOR UPDATES!



EQUIPMENT: (2) SCHEER 96 Skewer Rotisseries; BLODGETT BX-14 Boilerless Combi Oven, Smart Touch, Mdl. BX14 GA/AA; ALTO SHAAM CombiTherm Oven, Mdl. 7.14ESG, Gas; (2) RATIONAL Combi Ovens, Mdl. COS 201 and CM 61; ALTO SHAAM Combi Steam Convection Oven, Mdl. HUD 6.05; WINSTON CVAP Steamer; SOUTHBEND Double Oven w/10-Burner Range; (7+) GARLAND, DCS and JADE Single Ovens w/6- and 4-Burner Ranges; SOUTHBEND Double Broiler Oven; LANG Double Convection Oven, Electric; (2) CADCO Unox Tabletop Ovens, Mdl. XAF113; LANG 48" Gas Grill; HENNY PENNY 8000 Pressure Fryer; (4) PITCO 40-Lb. Gas Fryers, Mdl. SG14 w/Digital Controls; (4) ANETS Single Gas Fryers; (5) VULCAN and (3) DEAN Single Fryers; 5-Comp. Fryer; SOUTHBEND Tilt Kettle, Mdl. KECT-20, Electric; (2) CLEVELAND Tilt Kettles, Gas; (5+) DUKE, SERVEWELL 5-, 4- and 3-Comp. Steam Tables; METRO C5 6 Series Heated Holding Cabinet; ALTO SHAAM 2-Drawer Warmer; MERCOC Slide Warmer Dispensers; Rooftop Mushroom Exhaust Fans; MULTIVAC C200 Sealer. **PIZZA OVENS:** BAKER'S PRIDE Electric Single Deck Pizza Oven, 220/240, 1-Phase, 60 HZ; BLODGETT Triple Slate Deck Gas Pizza Oven; **(4) SMOKERS:** (1) Towable Smoker, Will Hold (2) 180-Lb. Hogs, Trailer Cap. 1,195-Lb.; Large Portable MEADOW CREEK Smoker, (2) More Medium Size MEADOW CREEK Portable Smokers.



SINKS, S.S. TABLES & RACKING: CMA Dishwasher; Dish Wings; 3-, 2- and 1-Comp. Sinks; Hand Sinks; (30+) 9', 7', 6', 5', 4' and 3' S.S. Tables, Some Rolling; 5' S.S. Waitress Table; Dishwasher Wings; (4) 6' Aluminum Can Dispensing Racks; (15+) Aluminum Rolling Sheet Pan Racks; (15+) Green Coat Metro Racks; (25+) METRO MAX and CAMBRO 4' and 5' Rolling Resin Racks; (20+) Chrome METRO Wire Racks, Some Rolling; (10+) S.S. Wall Shelves; (4) 6' Double Door Resin Storage Cabinets; (3) Grey Metal 6 Section Lockers w/"Owner" Master Door Lock; (2) Tan Metal 15-Comp. Pigeon Storage Lockers; Swing Door Sets!



BAR EQUIPMENT: (4) PERLICK 2-Compartment Back Bar Coolers, Mdl. BBSN52-RO; TRUE and GLASTENDER 4' Reach-In Bottle Coolers; (2) PERLICK Glass Door Back Bar Coolers, Mdl. BBSN52-RT; (3) PERLICK 24" Mug Frosters; (2) PERLICK 24" Keg Coolers; PERLICK 4-Comp. Sink; PERLICK 5' S.S. Bar Station; 3' Ice Sink w/(2) 12" Drain Wings; (6) PERLICK 24" Drain Tables w/Shelves.



MIXERS & SLICERS, SMALL APPLIANCES:

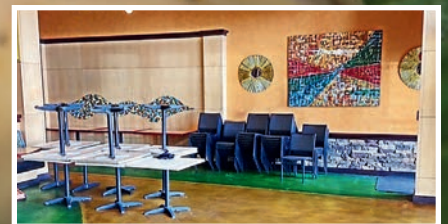
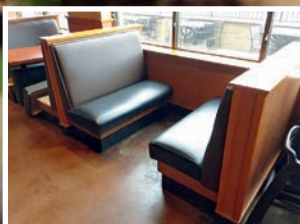
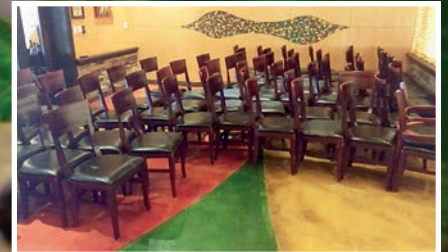
GLOBE 60-Qt. Mixer w/Attachments; GLOBE Grinder Attachment; HOBART 20-Qt. Mixer w/Bowl; HOBART Buffalo Chopper; (6+) BERKEL, GLOBE, AVANTCO and HOBART Slicers! French Fry Cutters; OLIVER Slicers, Mdl. 709 and 777; ROBOT COUPE Bucket Mixers; NINJA Pulse Blenders; TAYLOR Scales; BUNN and CURTIS Coffee and Tea Brewers and Dispensers; Microwaves.



REFRIGERATION: NEW ICE-O-MATIC Undercounter Ice Maker, Mdl. ICEU150HA; **NEW Glass Door Cooler Merchandisers:** EDGESTAR, Mdl. VBR440, and PREMIUM, Mdl. 125DX; (25+) TRUE, BEV AIR, VICTORY 3-, 2- and 1-Door Refrigerators, Freezers and Merchandisers, S.S. and Glass Door Units! TRUE Double Sliding Glass Door Cooler, Mdl. TSD-47G; TRUE 2-Door Single Wide Split Unit; **RANDELL Blast Chiller, Mdl. BC-510; VICTORY Ultra Spec Blast Chiller, Mdl. VBCF-5-45-BF051AZ+P;** (2) TAYLOR 702-27 Table Top Soft Serve Machines; (15+) TRUE and DELFIELD Makeup Tables and 6' and 5' Refrigerated Tables, Mdl. TUC-72 and TSSU-60; RANDELL 92" Pizza Prep Table; (8+) TRUE and BEVERAGE-AIR 4' and 27" Undercounter Refrigerators and Freezers; TRUE 60" Milk Cooler; COLORPOINT Mdl. CRDS-42 Pass-Thru Refrigerator w/S.S. Rolling Cabinet; Open Front Refrigerated Display; RANDELL 7-Pc. Rolling S.S. Serving Line Including 7' Cold Well, 3' Hot Well and 8' S.S. Counter w/Sink, all w/Sneeze Guards, 4' and 5' Cabinets and (2) Checkout Counters; (10+) Full Pan and Round Buffet Serving Drop-In Inserts; **WALK-INS:** 5' x 7' Self-Contained Walk-In; (10+) 4', 3' and 2' Aluminum Dunnage Racks; **ICE MAKERS:** MANITOWOC Ice Maker, Mdl. 140524A-161 w/Dump Bin! HOSHIZAKI Mdl. KM1300MAH Ice Maker w/Dump Bin; SCOTSMAN Undercounter Ice Maker; (4+) Ice and Water Dispenser Machines.



SUPER SEATING PACKAGES FOR (800+): (90+) Square and Rectangular Dining Tables w/Light Maple Field and Mahogany Stained Edge Wrap; (150+) Wood Frame Chairs w/Black Cushion Seat Dining Chairs; (8) Round Bar Tables w/Maple Field and Mahogany Stained Edge Wrap; (45+) Wood Frame Black Cushion Seat Bar Chairs; (24) 4- and 2-Top Red Maple Stained Dining Tables, (37) Black Metal Frame Red Maple Stained Wood Seat Dining Chairs and (6) Bar Chairs, (3) Sections 4-Top Red Maple Frame w/Brown Booth Seats and (5) Matching 8' Bench Wall Seats; (24) Maple 2-Top and 4-Top Dining Tables, (50) Aluminum Slat Back Dining and Bar Chairs; (17) Grey Frame Black Seat Bar Chairs; (29) Sq. 2-Top and (18) Round 2-Top Multi Color "Café" Dining Tables, (50) Maple Frame and Back Dining Chairs w/Brown Cushion Seat, (31) Cherry Frame and Back Dining Chairs; (60+) Black Cushion Seat Metal Framed Stack Chairs; (15) 8' Resin Folding Tables. **BOOTHS:** (4) Black Semi-Circle High Back Booths; (2) 6' Wall Benches; (10) Cherry Grain Black Cushion Back Booths; **Nice PATIO Furniture:** (120+) Brown Faux Rattan and Bamboo Style Patio Chairs; (25+) Tan Green Faux Marble and Moss Green Resin Patio Tables; (5) Faux Rattan Patio End and Coffee Tables; 15-Pcs. of Faux Rattan Outdoor Patio Furniture; (15) Black Metal Patio Tables and (30) Black Metal Patio Chairs; (21) Brown Metal Patio Chairs; (20+) Wood Tray Stands; (20+) Black Resin and Wood High Chairs; Booster Seats; Trash/Tray Stands.



3 RINGS RUNNING!



301 S. Lasalle Street, Indianapolis, Indiana 46201

Sale Date:
Tuesday,
February 4,
10:00 A.M.



MULTI
RESTAURANT



Sale Location: 301 S. Lasalle Street,
Indianapolis, Indiana

QS-0025094

First Class Mail

Urgent!!

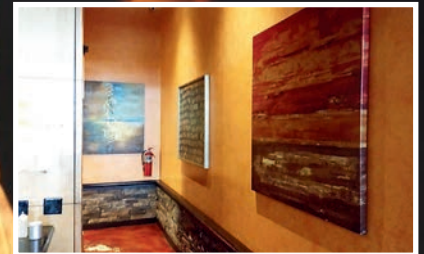
Time Sensitive Material!!

Presorted
First Class Mail
U.S. Postage
PAID
Eugene, Oregon
Permit No. 17

Please Forward to Purchasing Manager

Public Auction

If your company is considering relocating, downsizing or liquidating surplus assets please call us for a free, no obligation consultation. In many instances we can save you or make you thousands of dollars. Please Call: 317-632-8040 or email info@clofa.net.



A/V SPEAKERS, EQUIPMENT & LIGHTING: (4) KLIPSH 360 Speakers; (6) APOGEE AE5 Speakers (7) Carpeted and Matte Black 15" Subwoofers; (4) APOGEE AE12-52 Subwoofers; Amp Rack for Apogee AE5. (3) APOGEE P10RV Processors; (83) JBL Control 26CT Ceiling Speakers; (4) ELKI Projectors; (4) ADJ H20 Lights! (24) PAR 64 Lights; Cables; (14) Video Monitors: SONY, JVC, AEMCO and PANASONIC. **TVS, POS and DÉCOR:** SAMSUNG and WESTINGHOUSE Flat Screen TVs; MICROS Cash Drawers, Receipt Printers and POS Screen; Computer Monitors; HP and SAMSUNG Laser Printers; OPEN Signs; CSS Money Drop Safe; (14) Framed Wall Art Décor; 6'-8' Artificial Trees; (8) Pretty Round Chandeliers! **LOUNGE/EVENT SEATING:** (65+) Pcs. Sectional Sofa and High Back Chair Lounge Seating; (15) White Sofas and Benches.



BIDDER'S INFORMATION

Inspection Information: 8:30 A.M. Day of Sale.

Directions: Located on the near southside of Indianapolis. From the intersection of Rural Street and English Avenue, go east 1/4 mile to Lasalle Street (stoplight). Turn left or north and go 100 yards north to sale site. Watch for yellow and red auction directional signs.

Payment: Everything is sold "as is, where is" without any guarantee or warranty by the liquidator. Payment, including 15% buyer's premium, shall be made by cash, VISA/MC/Amex/Disc or In-State Business Check Accepted Only w/an Irrevocable Bank Letter of Guarantee, absolutely no exceptions. Sample on website. No out of state checks accepted. All purchases must be removed within the time specified. All sales final. We must collect sales tax unless you have a Registered Retail Merchant's Certificate. All purchases must be paid for by the end of the sale day.

Removal: Bidders shall have until Wednesday, February 5, 4:00 P.M., to remove merchandise from auction location. Any items not removed from premises by 4:00 P.M., Wednesday, February 5 shall be considered abandoned and Bidder shall lose all right, title and interest in the equipment. Bidders DO NOT have right of abandonment and Bidders shall additionally be responsible for any disposal and removal costs incurred by Commercial Liquidators of America due to the removal and/or disposal of any abandoned items. Announcements day of sale take precedence over any printed material. General Consignment Sale. All American Auctions AC 30200070, Brian Shaw AU19900102, Jimmy Wainscott AU10300103.

Send E-Mail to INFO@CLOFA.NET for detailed illustrated color PDF auction brochure.

SMALLWARES: Huge Qty. Smalls!

Large Variety China, Cases Glassware, S.S. and Acrylic Pans and Inserts! Skillets, Colanders, Aluminum Baking Sheet Pans; Clear Acrylic Sheet Pan Covers; Cases New S.S. Deli Pans! Utensils; Assorted Supplies; Bus Carts; Sidewalk Stands; KOALA Baby Changers. **CATERING:** (2) Mobile Bar Stations; Chafing Stands; (12+) CAMBRO Insulated Drink and Food Transports/Servers; IGL00 Drink Coolers; Full Pan Warmers; Chocolate Fountain; (40+) Cases Glassware; Much More!