



TRACTORS ~ FARM EQUIPMENT ~ HAY ~ MISC. FARM ITEMS

PUBLIC AUCTION

THURS. March 28TH 2024 11 AM

Located 2070 Camp Swatara Rd. Myerstown, PA 17067



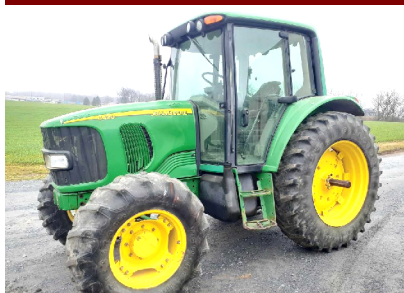
John Deere 6190 R



John Deere 4020



John Deere 4440



John Deere 6420



John Deere 4020



John Deere 2840



Sprague-Coupe

Tractors ~ Truck: John Deere 6190 R W/American command arm; 3 remotes, top link, new battery, new starter, new thermostats, new PTO internal and external shaft, exhaust gaskets and more! Sound tractor with 12,525 hours duals & front end weights offered separate; John Deere 6420 MFWD, PWR Quad, 2 scvs Rack& Pinion, left hand reverser, 6,861 Hrs.; John Deere 4440 with dual remotes, 540 /1000 PTO, new rear tires, LED lights, new interior, 8-speed power shift trans less than 500 hours on complete engine overhaul; John Deere 4020 with side console, Synchro range, dual remotes 9,540 hours, original tight tractor with quality paint job and new seat; John Deere 4020, side console, Synchro range, dual remotes, new clutch with ROPS and canopy; John Deere 2840, high low eliminated; JD 2940 Hi-Low, Canopy, Dual Remotes, Transmission Oil System Overhauled, Updated Steering Kit, Starts Good, New Paint, Showing 9100hrs; 2003 F-250 4X4, Crew Cab, Flat Bed, New Items: tires, rear brakes, battery, Steering Pump, (Little Engine Miss) Runs.

SPRA-COUPES: 3630 Sprague-Coupe, W/ rate controller, rear view camera, 60 ft boom

HAY EQUIPMENT: John Deere 945 mid pivot Moco, 1000 PTO, impeller conditioner;

John Deere 735 mid pivot Moco, 1000 pto, rubber roll conditioning, approximately 200 Acres on rebuilt cutter bar; 2013 MF TD 1135 4 star Tedder; H&S BF 12 Wheel Rake;

Misc Equip: Nuhn 5000 Manure tanker W/brakes; Mayrath 7x50 auger; Farm built hydraulic dump trailer; 16 ft cattle trailer(no title); PBZ QA Bale Spear; round bale feeder; big square bale feeder; 15 big square bales of cattle hay; Spreader Tire; 6 250 gal. Totes; Etc

John Deere Gator & Lawn Equipment: John Deere 6x4 Gator; Exmark Lazer Z with new engine and seat 60-in deck; Toro Z Master 70 inch deck w/ Kawasaki liquid cooled engine. Sale For Elmer Zimmerman & Neighbors. Elmer Is Moving And Discontinuing Farming. Terms: Cash PA Check Or Credit Card W/3% Food Stand Available Be Prompt Not Many Small!



(717) 383-5606
Joel Heisey
Les LONGENECKER
(484) 256-1323
PA-AY002453
We're SOLD on serving you!
WWW.HEISEYAUCTIONS.COM



