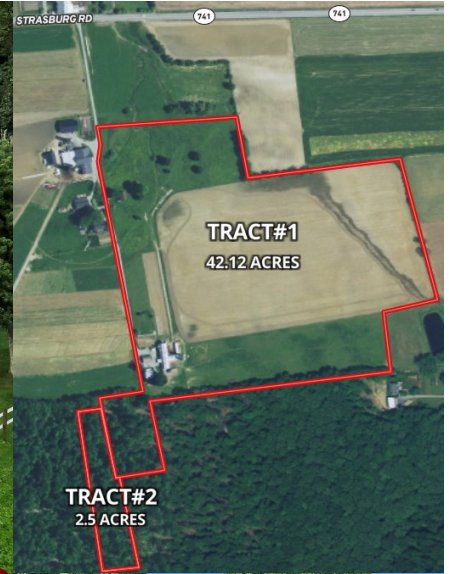




45 +/- ACRE FARM W/ 2 HOUSES & DAIRY BARN IN LANCASTER CO
TRACTOR-FARM EQUIPMENT-HORSES
PUBLIC AUCTION



Saturday, September 17, 2022
Farm Equipment 9:00 AM, Real Estate 12:00 PM



788C Strasburg Rd; Paradise, PA 17562



TRACT #1: Prime Lancaster County Dairy Farm w/ 2 Dwellings in a Beautiful, Secluded Setting w/ Farmland Views Features Approx. 30 Acres Tillable, 8 Acres Pasture, Balance Buildings & Woodland. Approx. 42.12 Acres Total. Strasburg/Paradise/Kinzers/Nickel Mines/Gap Area. TAXES w/ Discounts: Spring-\$1308.47, Fall-\$5,104.62. **MAIN HOUSE: Approx. 2500 SF 2-Story Farmhouse** w/ Partially Finished Walk-in Basement. 1st Floor: Kitchen/Dining/Family Room, Full Bath, 1 Bedroom, Enclosed Front Porch Opens to Front Deck, Stamped Crete Rear Patio; Upstairs: 4 Bedrooms & Full Bath. Home Is Not Connected to the Electrical Grid; Serviced by Midnight Classic Outback Power Systems VFX2812 New in 2008 w/ Single Phase Sinewave Inverter/Charger w/ AC Transfer Switch; Gas Hot Water Heater, Wood/Coal Furnace for Heat. Sets approx. 1,600' from road via shared driveway. **2ND HOUSE: Large 2½ Story, 4 Bedroom, 1 Bath Stone House** w/ Spacious Eat-In Kitchen, Family Room, Living Room, First Floor Laundry, Basement & Attic; Oil Hot Water Heat, On-Site Well & Septic. This House Has Electric & Has Been a Rental. Picturesque Setting--Would Make a Nice Airbnb! **BARN:** 38'x127' 43 Cow Tie Stall Barn w/ Comfort Loop Stalls w/ Petersheim Mattresses & Horse Stalls w/ 30'x50' Attached Loafing Shed & Milk House; Upstairs has Lg. Round Roof w/ Drive-In Bay for Hay & Equipment Storage. (2) 14'x 50' Stave Silos. **GARAGE:** 24'x36' Garage & Other Misc. Outbuildings.

TRACT #2: 2.5 +/- Acre Unimproved Wooded Tract (ID #490-80534-0-0000) located at Wolf Rock Rd Rear to be sold immediately after the farm. TAXES w/ Discounts: Spring: \$150.85 Fall \$588.52.

OPEN HOUSE: Saturday, August 13, from 1-3 PM or by appointment. For appointment to see or for help to obtain bank financing, call Joel at 717-949-3211. **NOTE:** This Paradise Township farm in Pequea Valley School District has an outstanding private setting w/ stellar view and would make a great homestead, produce farm, or potential to return to dairy. Level, highly productive soil, pasture w/ stream access, 2nd house w/ income potential. Come prepared to buy! Owners are downsizing & plan to sell. **REAL ESTATE TERMS:** 10% Down on Auction Day. Balance in 60 Days.

SEE MORE INFO & PHOTOS:
www.heiseyauctions.com

Joel Heisey Auctioneer
License #AU004037
(717) 949-3211
www.heiseyauctions.com




AUCTION FOR:
Moses L. & Mamie E. Glick
(717) 847-8818
Attorney: Anthony Schimaneck (717) 299-5251

INFORMATION BELIEVED TO BE ACCURATE BUT NOT GUARANTEED.
SEE REVERSE SIDE FOR PERSONAL PROPERTY →

SOLD on Serving you!



45 +/- ACRE FARM W/ 2 HOUSES & DAIRY BARN IN LANCASTER CO
TRACTOR-FARM EQUIPMENT-HORSES

PUBLIC AUCTION



Saturday, September 17, 2022

Personal Property 9:00 AM, Real Estate 12:00 PM

788C Strasburg Rd; Paradise, PA 17562



Oliver 1600



TRACTOR: Oliver 1600 Diesel w/ Super 6 Loader Showing 1,075 Hrs.

FORKLIFT-EQUIP-FARM RELATED ITEMS: LP Hyster Two Stage, 3,000lb Forklift w/ 4100 Hrs; Pallet Jack; 3 Pt Log Splitter; 3 Pt Forklift Mast; 120 Gal Fuel Tank; Farm-Built Wagon w/ Chicken Coop & Nest Boxes; 16' Flat Wagon; White Horse Machine Auto Turn 605; 7' JD Kba Disk; 7.5' Bush Hog w/ 32 HP Wisconsin Power Unit; Lancaster 100 Manure Spreader (Nice); 12' Minor Elevator; ELS 8' Stationary Manure Pump; Two Horse McCormick One Row Cultivator; 9' Harrow; 9' Packer; I&J Adjustable Garden Cultivator; Two Horse I&J One Road Cultivator; One Horse Cultivator; One Horse Potato Plow; Feed Carts; Flex Auger; 4 Co-Pulsation Milking Units; (6) 60lb Pales; Etc.

HORSES & RELATED ITEMS: Belgium Mare Workhorse, Smooth Mouth, Work Either Side; One Standard Bred Driver; Four Sets of Harnesses; 20, 21, 22, 23 & 24" Collars; 3,4 & 6 Horse Hitches; 2 Check Lines; 4 Jockey Sticks; 1 Driving Harness; **Jersey Cattle:** Fresh Jersey Cow, Jersey Yearling Heifer, Jersey Heifer Calf; Etc.

MISC: Acetylene Torch; Coleman Powermate 5000 Generator; 10x8 Eskimo Panels Walk-In Cooler; 6' CWD Ice Box; Push Cultivator; No. 20 Express Pot Belly Stove; Steel Hedge Trimmer; Jonsered Chainsaw; Snow Fence; Cast Kettle; RCA Range; Hand Tools; Bolt Bin; 12 Sp INT HD Drill Press; 10" Craftsman Table Saw; Lanterns; Bedroom Suites & Other Furniture; + Much More!

NOTE: Early partial list! Nice selection of merchandise! Beautiful setting for an auction. Benefit food stand.

PERSONAL PROPERTY TERMS: Cash, Good PA Check or Credit Card (w/ 3% fee).

SEE MORE INFO & PHOTOS:
www.heiseyauctions.com

Joel Heisey
Auctioneer
License #AU004037
(717) 949-3211
www.heiseyauctions.com




AUCTION FOR:
Moses L. & Mamie E. Glick
(717) 847-8818

Attorney: Anthony Schimanek (717) 299-5251

SEE REVERSE SIDE FOR REAL ESTATE →

SOLD on Serving you!