

# AUCTIONS

COMMERCIAL, INDUSTRIAL, AND RESIDENTIAL PROPERTIES



Max Spann Real Estate & Auction Co.  
P. O. Box 4992  
Clinton, New Jersey 08809

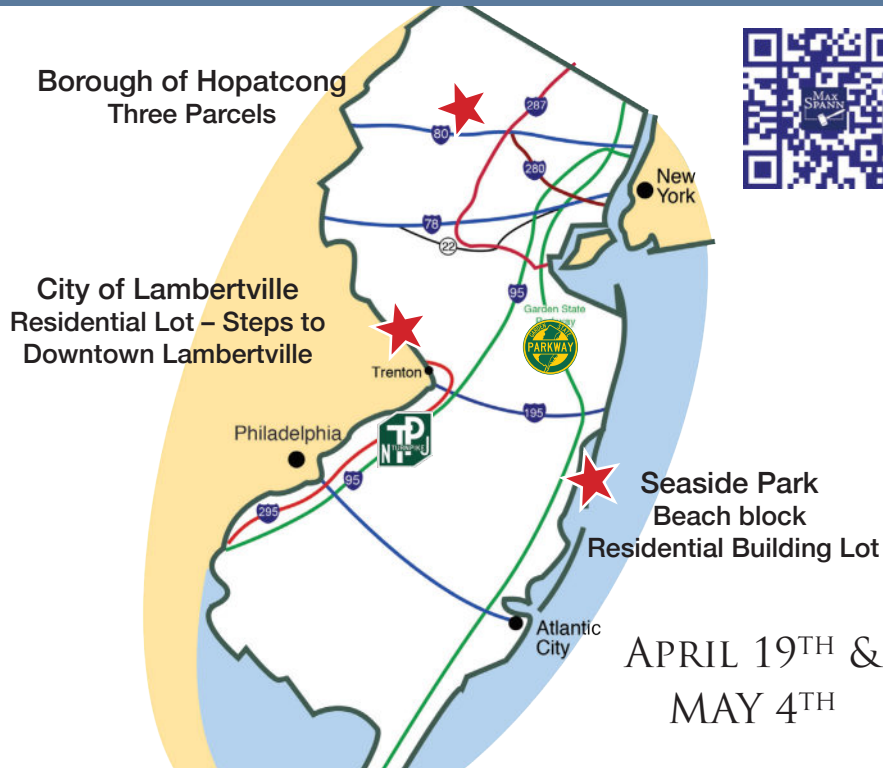
A licensed NJ Real Estate Broker



OFFICES: NEW YORK - NEW JERSEY - FLORIDA  
**888-299-1438** | [maxspann.com](http://maxspann.com)

**Bid On-Line!**

Get the Max Spann Smartphone App or go on-line



APRIL 19<sup>TH</sup> &  
MAY 4<sup>TH</sup>



# AUCTIONS

COMMERCIAL, INDUSTRIAL, AND RESIDENTIAL PROPERTIES

By Order of the Borough of Seaside Park

APRIL 19<sup>TH</sup>



Beach Block Residential Building Lot  
Ready for Construction

By Order of the Borough of Hopatcong

MAY 4<sup>TH</sup>



Three Parcels-Sold Separately  
2 Commercial/Industrial & 1 Residential

By Order of the City of Lambertville

MAY 4<sup>TH</sup>



Residential Lot  
Convenient to Downtown Lambertville

## By Order Of Seaside Park

### Beach block Residential Building Lot Ready for Construction

- Steps to the Beach & Barnegat Bay
- Cleared Lot - 50 x 130<sup>+</sup> feet deep

*The Borough of Seaside Park is a bucolic beach town located between the miles of pristine coastline of Island Beach State Park and the fun and excitement of the Seaside Height Boardwalk.*

#### Online Auction:

Bidding Concludes Wednesday, April 19<sup>th</sup>, 2023 at 11 am



Property Address: 66 I Street, Seaside Park, NJ 08752



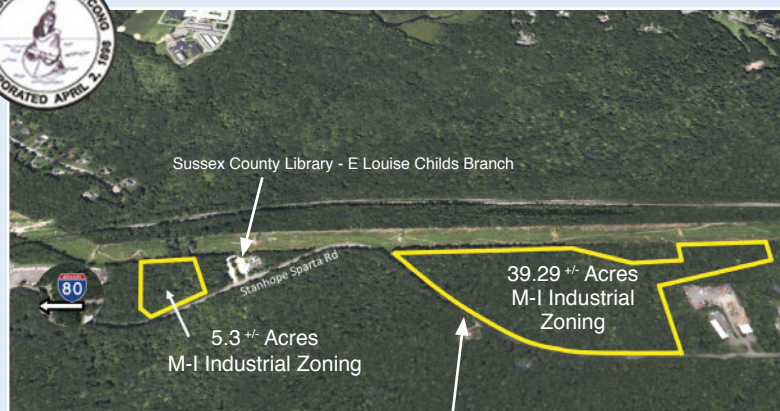
## By Order of the Borough of Hopatcong

### Attention Builders, Developers and Investors!

- Three Parcels – Bid on one, two or all three.
- Two industrial zoned parcels with excellent visibility along the major artery from Stanhope to Sparta.
- Close to Lenape Valley Regional High School, Stanhope, Hopatcong, and I-80.

#### Online Auction:

Bidding Concludes Thursday, May 4<sup>th</sup> at 11 am



119 Stanhope Sparta Rd, Hopatcong (Andover), NJ 07821



34 Greenwood Ave, Hopatcong,  
(Stanhope), NJ 07874

## By Order of the City of Lambertville

### Residential Lot Convenient to Downtown Lambertville

- 136 x 142<sup>+</sup> ft (.443<sup>+</sup> Acre) Residential Lot.
- Lambertville is a quaint Delaware River town with unique shops, casual and fine dining sites, and miles of hiking or biking along the D&R Canal Trail.
- The New Hope-Lambertville bridge offers convenient access across the Delaware River to New Hope.

#### Online Auction:

Bidding Concludes Thursday, May 4<sup>th</sup> at 11 am



Property Address:  
150 Swan Street, Lambertville,  
Hunterdon County, NJ 08530



**Upcoming Sales coming soon in  
Evesham, Atlantic City, Trenton, Phillipsburg...  
See [www.maxspann.com](http://www.maxspann.com) for details**

**Join the bidders-club**  
download the Property Information Package and then  
tour the properties during one of the property previews.

**888-299-1438**  
**MAXSPANN.COM**  
**SERVING THE NATION**  
OFFICES: NEW YORK - NEW JERSEY - FLORIDA

