

AUCTIONS

Government Properties Located in Somerset and Sussex Counties, NJ



Max Spann Real Estate & Auction Co.
P. O. Box 4992
Clinton, New Jersey 08809

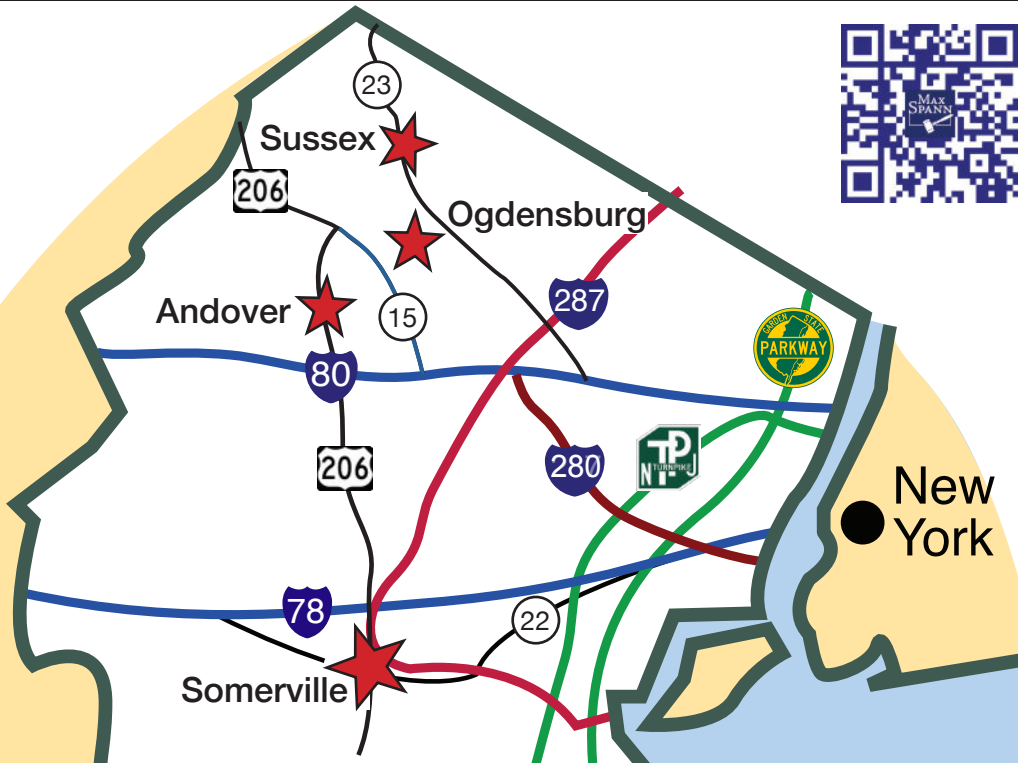
A licensed NJ Real Estate Broker



OFFICES: NEW YORK - NEW JERSEY - FLORIDA
888-299-1438 | maxspann.com

Bid On-Line!

Get the Max Spann Smartphone App or go on-line

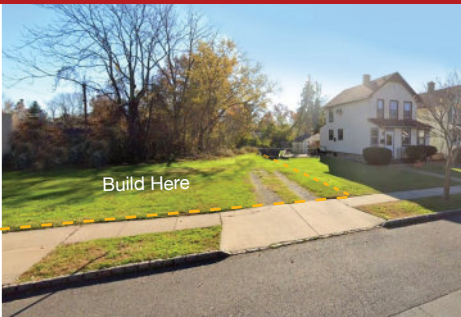


AUCTIONS

Government Real Estate Auction

Properties Located in Somerset and Sussex Counties, New Jersey

By Order of the Borough of Somerville



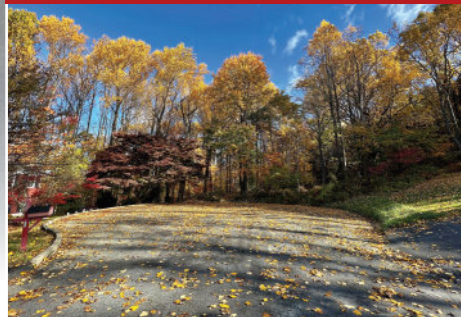
Residential Lot Near RWJ Hospital

By Order of the Borough of Andover



8 Residential and Commercial Lots

By Order of the Borough of Ogdensburg



Six Residential Lots-Sold Separately

By Order of the Borough of Sussex



Mixed-Use Redevelopment Opportunity

MARCH 9TH

By Order of the Borough of Somerville



Residential Lot Close to Downtown Somerville, Somerset County, NJ

Attention Local Builders! Take part in Somerville's thriving growth and development

- Deep 50'x175' +/- ft lot.
- Somerville borough's smart redevelopment plans have revitalized the local economy and created a walkable downtown that is welcoming for pedestrians.
- The city is vibrant and exciting with eclectic shops, downtown family activities, and casual and formal restaurants. A memorable place for both residents and visitors.



Artist Conceptual rendering

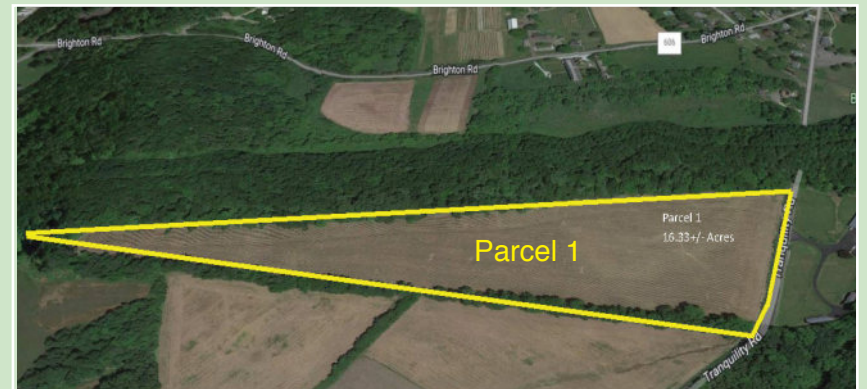
Property Address: 52 Fairview Ave, Somerville, Somerset County, NJ 08876

By Order of the Borough of Andover

8 Residential and Commercial Lots Andover, Sussex County, NJ

8 Residential and Commercial Lots Sold in 6 Parcels

- Quaint Andover Borough is along one of the main arteries of Sussex County with specialty stores, antique shops, and local restaurants.
- Situated along Route 206 and convenient to State Parks, Mountain Creek Ski Center, and Crystal Springs Golf Course.



Parcel 1 - 16.33[±] Acre Site on Rt. 517 between Rt. 80 and 206 Industrial Zoning

Download the list of properties and locations at maxspann.com, then drive-by the properties to preview when convenient.

By Order of the Borough of Ogdensburg



6 Residential Properties Throughout the Borough Ogdensburg, Sussex County, NJ

Six Residential Opportunities-Bid on One, Two or Several-Your Choice!

- Various sizes from .34 to 18.56[±] acres, featuring an end of the cul-de-sac Lot with beautiful views and three contiguous home sites ready for a builder.
- Ogdensburg is convenient to Routes 23, 15 and 94.

Join the bidders-club, download the property information package and drive-by to preview the properties.



By Order of the Borough of Sussex



Commercial Mixed Use Main Street Redevelopment Site Sussex, Sussex County, NJ

Redevelopment Site on Main Street

- Rehab existing building or Redevelop entire site for mixed use with commercial retail space on Main Street.
- 53'x80' Lot with public utilities.
- Central Business District Zoning.
- Sussex is well known for its proximity for the outdoor enthusiast. Close to High Point & Stokes State Parks, the Appalachian trail, Walkill River National Wildlife Refuge, Crystal Springs Resort & Golf Course, and Mountain Creek Resort & Ski Center.



Property Address: 12-18 Main Street, Sussex, Sussex County, NJ 07461

Join the bidders-club, download the property information package and drive-by to preview the property.

Online Auction:

Bidding Concludes Thursday, March 9, 2023 at 11 am

888-299-1438
MAXSPANN.COM
SERVING THE NATION

