

Antique Tool and Industrial Architecture Auction 11/7/2020

---

- 1 Stratton Brothers Level  
30 inches in length. Patented July 16, 1872, Oct 4, 1884(?), & May 22, 1888



- 2 Millers Falls No. 14 Jack Plane  
Iron is also marked Millers Falls.



- 3 Stanley 28 inch No. 33 Transitional Jointer Plane  
Tote has condition issue, primarily at the top. Overall plane is very good.



- 4 D.R. Barton coffin plane  
Impressed with D. R. Barton Rochester N.Y. in an oval, with 1832 in the middle of the nose end. Iron is Barton.



- 5 Two (2) rabbet planes & one (1) molding plane  
6" molding plane, 6 3/16" rabbet with brass sole. 5 3/4" rabbet. All rosewood.



- 6 Unmarked combination plane  
Front iron is marked Craftsman. Missing lever cap and rear blade.



## Antique Tool and Industrial Architecture Auction 11/7/2020

- 7 Unmarked bench plane  
Iron is stamped Consolidated Tool Works Inc.



- 8 Five (5) E.A. Berg Chisels  
Eskiltuna Sweden. Various sizes and conditions.



- 9 Greenlee socket chisel  
1 1/2 in. cut. 15 inches total length. Cutting edge needs to be re-ground. Handle is heavily worn.



- 10 Cabinetmaker's wooden spokeshave



- 11 Stanley No 60 Double Iron Spokeshave  
Hollow and straight iron



- 12 Unmarked Double Iron Spokeshave  
Hollow and smooth irons



- 13 Draw knife with chamfer guide



## Antique Tool and Industrial Architecture Auction 11/7/2020

- 14** 28" Draw Knife  
28" Blacksmith made



- 15** "Casewin" No. 101 Brass Fixture  
For casements and transoms. 13 3/4 inches long.



- 16** Morrill Plier Saw Set  
Patented Jan 8, 1895, Feb 23 1897, Jul 1 1902



- 17** Handmade wooden nail box



- 18** Combination clamp and drill  
Pat. Mar 4 1890.



- 19** Miscellaneous lot wood handled tools  
Includes a scraper and two (2) knives



- 20** Lot three (3) assorted tools  
Stanley plow plane (damaged), small coping saw without blade, & unmarked ratcheting spiral screwdriver



Antique Tool and Industrial Architecture Auction 11/7/2020

---

- 21** Lot miscellaneous tools  
Includes a broken US saber dated 1906.



- 22** Lot miscellaneous tools  
Includes two (2) socket chisels, one marked Winchester the other marked Barton.



- 23** Lot custom sign mounting hardware



- 24** Lot custom sign mounting hardware



- 25** Lot custom sign mounting hardware



- 26** Lot custom sign mounting hardware



- 27** Lot custom sign mounting hardware



- 28** Lot seven (7) handmade hooks



Antique Tool and Industrial Architecture Auction 11/7/2020

- 29** Two hatchets  
One modern with composite handle. The other with a wooden handle.



- 30** Radial tire run out gauge



- 31** Pick Axe  
Long handled



- 32** KD Tools ball joint gauge



- 33** Short Handled Pick  
Marked U.S. Diamond Calk 1945 (green handle maybe military ?)



- 34** Old brake bleeder pump



- 35** Four (4) Nicholson flat bastard files  
8, 10, 12, & 14 inch. USA

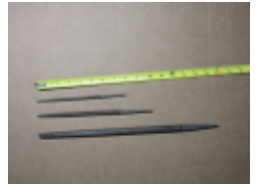


- 36** Four (4) Nicholson flat bastard files  
Three (3) 8 inch & one (1) 12 inch.



Antique Tool and Industrial Architecture Auction 11/7/2020

**37** Three (3) Nicholson files  
 Round taper 12 in., 3 face taper 7 in., and round taper 5 1/2 in.



**38** Three (3) Nicholson files  
 Taper knife form body 6 in., Taper 3-face 6 in., Taper 3-face 6 in.



**39** Nicholson four face (square) narrow taper 10 in.  
 #2 cut



**40** Arcade 13 in. long round handled file  
 With horseshoe brand



**41** Unmarked brace



**42** Stanley Brace



**43** Two (2) eggbeater drills  
 One with red handle and red drive wheel.



Antique Tool and Industrial Architecture Auction 11/7/2020

---

- 44** Lot bits incl. five (5) auger  
Four (4) marked Russel, one adjustable marked No. 8 Greenlee



- 
- 45** Enterprise Model 1010 Meat Chopper



- 
- 46** Winchester No. W13 Food Grinder



- 
- 47** Two small hammers & one small hammerhead



- 
- 48** Three (3) Wood Handled Tack Hammers



- 
- 49** Two (2) wooden mallets



- 
- 50** Lot hemp rope



- 
- 51** Box Velvel Sisal 3-ply medium twine



Antique Tool and Industrial Architecture Auction 11/7/2020

**52** Flat of Assorted 8 Tools  
 Marking gauge, Stanley utility knife, wood roller, pinching tools....



**53** Flat of Assorted 9 Tools  
 Evans tape measure, tap, copper solder iron, 2 ratchets, hooper, ? gauge marked Starrett Co. pat Apr 13, 1



**54** Flat of Assorted 10 Tools  
 Moores Oil & Fertilizer box crate opener, Alpen Brau ice pick, bottle opener/cork screw, sm. hack saw, h  
 opener ...



**55** Stover Mfg. Co. saw vise



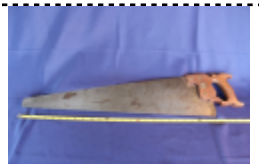
**56** Stanley No. 60 mitre box with saw



**57** Lot saws and saw blades  
 Two (2) hand saws, a hacksaw, a backsaw, and nine (9) assorted saw blades.



**58** E.C. Atkins & Co. hand saw  
 26-inch saw. Indianapolis, Ind.



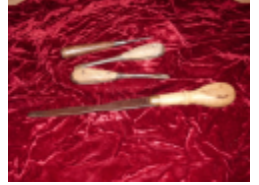


Antique Tool and Industrial Architecture Auction 11/7/2020

**59** Two (2) Yankee 31A spiral ratcheting screwdrivers  
North Bros. Mfg. Co. Philadelphia



**60** 4 Wooden Handled Screwdrivers  
3 old 1 newer



**61** Yankee Screwdriver  
14" long



**62** Old Wood Handled Screwdriver, Screw Cap End, 8  
Int



**63** Brace with bits  
Includes Irwin Speedbor spade bits and one (1) long auger bit.



**64** 13 assorted auger bits & line level  
Bits marked Craftsman, Irwin, & Bluegrass. Line level marked Sands-Stevens.



**65** Lot six (6) assorted spanner wrenches  
Two (2) marked L.C.N.



Antique Tool and Industrial Architecture Auction 11/7/2020

**66** Lot four (4) assorted wrenches  
Richards-Wilcox Mfg. Co. Aurora Ill. The Colson Co. Elyra, Ohio Indestro Chicago



**67** Outers gun cleaning kit and two (2) oil cans  
Siloo Screwloose - The Miracle Loosener  
D and D Linseed Oil



**68** Coleman Model 275 Lantern  
Double mantle. With box. Appears to be unused.



**69** Assorted torches and accessories  
Keen Kutter torch box, three (3) unmarked torches, pipe cutter, small propane tank, and other related mis



**70** Brass Blow Torch  
Clayton & Lambert MFG. Co. (Pat Jan 4 1921)



**71** Little Giant Metal Punch, Straight Tin Snips  
Sealed Power Tool



**72** Muriel Cigar Tin of Rulers  
3 tri squares, Zig Zag rule, 3 compasses, various other rulers some advertising



Antique Tool and Industrial Architecture Auction 11/7/2020

**73** Columbian D45-M4 Bench Vice  
Includes integrated pipe vise.



**74** Littlestown Hardware & Foundry vise  
Swivel base is broken, but all pieces are accounted for. Will mount to a bench just fine.



**75** Columbian Workbench Vice  
under bench mount, marked MFG. Co. Cleveland Ohio



**76** Buffum all steel screwdriver  
Marked Buffum Tool Co. Louisiana, MO with peace sign.



**77** Buffum screwdriver  
Marked Buffum Tool Co. Louisiana, MO with peace sign.



**78** Buffum 6 in. adjustable S wrench  
Marked Buffum Tool Co. Louisiana, MO with peace sign.



**79** Buffum 8 in. adjustable S wrench  
Marked Buffum Tool Co. Louisiana, MO with peace sign. Has broken off upper claw.



Antique Tool and Industrial Architecture Auction 11/7/2020

- 80** Buffum 10 in. adjustable S wrench  
 Marked Buffum Tool Co. Louisiana, MO with peace sign. Adjustment works, but is worn.



- 81** Buffum rivet setting punch  
 Marked Buffum Tool Co. Louisiana MO "8"



- 82** Buffum rivet setting punch  
 Marked Buffum Tool Co. Louisiana, MO.



- 83** Buffum knurled saddlers punch  
 Marked Buffum Tool Co. Louisiana, MO.



- 84** Buffum cotter pin tool  
 Marked Buffum Tool Co. Louisiana, MO.



- 85** Buffum general purpose wrench  
 Marked Buffum Tool Co. Louisiana, MO 2327 with peace sign.



- 86** Buffum 5 1/4" pliers  
 Marked Buffum Tool Co. Louisiana, MO.



Antique Tool and Industrial Architecture Auction 11/7/2020

**87** Buffum gas pliers  
Marked Buffum Tool Co. Louisiana, MO.



**88** Buffum auto chain repair tool  
Marked Buffum Tool Co.



**89** Buffum ball peen hammer head  
Marked Buffum on one side.



**90** Two (2) Buffum curved bearing scrapers  
Both marked Buffum Tool Co. Louisiana, MO with peace sign.



**91** Two (2) Buffum curved bearing scrapers  
Marked Buffum Tool Co. Louisiana, MO with peace sign. One mark is worn.



**92** Buffum three-cornered automobile bearing scraper  
Marked Louisiana, MO Buffum Tool Co.



**93** Buffum curved bearing scraper  
Marked Louisiana, MO Buffum Tool Co. with peace sign.



Antique Tool and Industrial Architecture Auction 11/7/2020

94 40 in. chain wrench with cast iron lever  
30 in. chain



95 Conduit bender with 38 inch handle



96 Lakeside/Wards pipe cutter USA  
Up to 1 1/4 inch.



97 12 inch pipe wrench USA



98 Iron barn pulley



99 Iron barn pulley



100 Wooden barn pulley



101 Millers Falls Company Catalogue "E" Pocket Edition  
Cover has separated from rest of the binding, but overall in very good condition.



## Antique Tool and Industrial Architecture Auction 11/7/2020

102 Unmarked brass plumb bob



103 Two (2) Singer sewing machine oilers



104 English Blue Steel Graining Combs  
Metal case (RIDGELY)



105 Brass finger plane  
Marked "H.S. & Co. N.Y."



106 Bull nose cabinetmaker's rabbet plane  
Appears to be identical to a Stanley #93, but is not marked.



107 Two (2) Brass Miniature Cabinet Maker's Shaves  
1 winged 3 11/16", 1 winged 2 1/2", both are smooth single irons

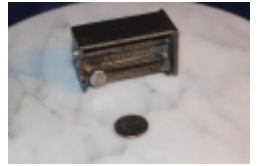


108 Two (2) Brass Miniature Cabinet Maker's Shaves  
1 double smooth irons 2 1/4", 1 winged 3 3/4" smooth single iron



## Antique Tool and Industrial Architecture Auction 11/7/2020

- 109** Stanley No. 95 Butt Gauge  
1 of 2



- 110** Stanley No. 95 Butt Gauge  
2 of 2



- 111** Stanley Bailey No. 7 Type 11 Jointer Plane  
Sole has been brazed, but repair is high quality. Tote has some wear.



- 112** One (1) rabbet plane & one (1) molding plane  
Beechwood. One is missing the blade.



- 113** Unmarked jointer plane  
With corrugated sole.



- 114** Unmarked brass router plane



- 115** Stanley Bailey No. 5 Type 15 Hand Plane





## Antique Tool and Industrial Architecture Auction 11/7/2020

116 Sargent No. 408 Smooth Bench Plane



117 Two (2) rabbet planes  
Larger plane has an offset tote. Both beechwood.



118 Stanley Type 20 Hand Plane



119 Stanley No. 81 Cabinet Scraper  
With rosewood sole.



120 Stanley No. 82 Cabinet Scraper  
marked U.S. Pat 1-29-07



121 Handled scorp



122 Two (2) wooden boxes

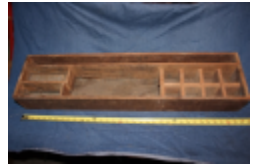


123 Small wooden bench



Antique Tool and Industrial Architecture Auction 11/7/2020

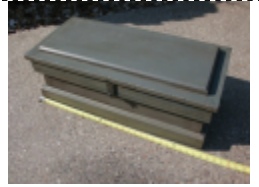
**124** Large compartmentalized wooden box  
Approx. 10" x 35"



**125** Large drop lid wooden toolbox  
33.75" x 7.75" x 13.5" Includes storage for hand saws in lid and a drawer.



**126** Carpenter Tool Box with Tray  
28" L x 12 1/2" W x 10" W



**127** Workbench Stool  
Swiveling seat



**128** Metal swivel shop stool



**129** Cast Iron Bench Grinder  
2 grinding wheels, marked 2



**130** Belt-driven wood lathe  
Approx. 5 ft. in length. Includes belts and working electric motor.



Antique Tool and Industrial Architecture Auction 11/7/2020

- 131** Belt-driven drill press  
Includes belts and working electric motor



- 132** C.S. Bell Model No. 3 Coffee Mill  
Counter style store coffee mill or grinder. Measures about 21" tall and the flywheel on the front is about



- 133** Primitive Hand Crank Grater  
marked Houchin MFG. Co. ' NY No. 712 Pat Jan 11 70, Apr 19. 77



- 134** Fulton Corn Sheller  
Cast iron, hand crank



- 135** McCormick sickle bar grinder



- 136** Large Ice Tongs



- 137** Log tongs, 2-man lifter  
Possible railroad



Antique Tool and Industrial Architecture Auction 11/7/2020

**138** Two-man saw  
Approx. 66" in length



**139** Two-man saw  
Approx. 68" in length. Blade has been welded.



**140** Sign bracket, welded steel



**141** Steel sign bracket, slim English style



**142** Sign bracket, steel shorter arm with single pickup



**143** Sign bracket for vertical display element  
"Key type."



**144** Sign bracket, steel simple slim  
With 30 degree brace



**145** Two (2) wrought iron transition elements  
From wood post to sign post.



Antique Tool and Industrial Architecture Auction 11/7/2020

---

**146** Bracket, cast iron "leaves"



**147** St. Louis street light transition element  
Post to globe.



**148** Corner Workbench Vice  
marked Littco No. 165 - Littlestown PA.



**149** Ridgid B-Y-2 1/2 Pipe Vice  
marked The Ridge Tool Co. Elyria OH



**150** Bench vise



**151** Ulmia brand German workbench  
72 in. beechwood with two (2) vises.



**152** Workbench  
With steel base and laminated wood top.



Antique Tool and Industrial Architecture Auction 11/7/2020

---

- 153** Duplicarver machine  
Comes with Rockwell router and manual.



- 
- 154** Vertical drying rack  
For drying panels or cards.



- 
- 155** 48 in. paper roll stand with cutter



- 
- 156** Large grinding stone  
2 in. thick, with axle and pillow blocks.



- 
- 157** Double tree horse neck yoke



- 
- 158** Large wheeled prylever bar  
Approx. 5 feet in length.



- 
- 159** Two (2) manhole covers  
Heavy cast iron



Antique Tool and Industrial Architecture Auction 11/7/2020

- 160** W F. & J. Barnes Co. pedal scroll saw  
 Rockford, Ill. U.S.A. Patented Oct 5 75, Oct 13 85, Oct 22 89



- 161** Portable coal forge with cast iron bowl



- 162** Peter Wright Patent English anvil  
 186 lbs.



- 163** Stanley No. 113 Circular/Compass Plane  
 Body is fractured on left side.



- 164** Stanley No. 50 Combination Plane  
 Missing one adjustment screw.



- 165** Two (2) block planes



- 166** Three assorted wood planes  
 Two (2) wooden block planes, one (1) unmarked bench plane.



Antique Tool and Industrial Architecture Auction 11/7/2020

167 NIB Stanley No. 4 Smoothing Bench Plane



168 Stanley block plane  
Right side of body is damaged.



169 Stanley No. 40 Scrub Plane



170 Stanley No. 7 Jointer Plane



171 Stanley No. 271 Router Plane  
Granny's tooth router or old womans tooth with 1 Cutter



172 Stanley No. 71 1/2 Router Plane  
Granny's tooth router or old womans tooth with 3 Cutter



173 Sinclair Lighter Fluid can



174 Winchester Permanent Anti-Freeze and Coolant can  
32 Fl. Oz





Antique Tool and Industrial Architecture Auction 11/7/2020

**175** Large MFA Medium Motor Oil can  
Columbia, MO  
Pat. May 10 1927



**176** Texaco EP140 Universal Gear Lubricant can  
35 lbs net capacity



**177** Texaco Home Lubricant can  
Includes small spout



**178** Texaco Valor Motor Oil can



**179** Texaco Improved Motor Oil can  
5 quart capacity  
For API service ML, MM and MS



**180** Texaco Motor Cup Grease can  
1 lb. net capacity



**181** Texaco lubricant can  
Radiator Anti-rust and Water Pump Lubricant  
8 fl. oz. capacity.



Antique Tool and Industrial Architecture Auction 11/7/2020

**182** Texaco Outboard Motor Oil can  
SAE 30  
1 quart capacity



**183** 5 Gallon Coops Lubricant Can  
(lot 1 of 2)



**184** 5 Gallon Coops Lubricant Can  
(lot 2 of 2)



**185** Stanley No. 59 Doweling Jig  
Includes one (1) bushing.



**186** Stanley No. 59 Dowel Jig  
Original box with various size dowel guides ???



**187** Heel Draw Shave  
marked Snell & Atherton No. 6



**188** Rounded Blade Leather Cutter  
Wood handle



## Antique Tool and Industrial Architecture Auction 11/7/2020

- 189** Pistol Grip Leather Draw Gauge  
walnut wood and brass grip handle



- 190** Leather Tools  
Leather circle punch, 2 leather awls, 1 leather stitching awl with 3 needles



- 191** Two saw handles  
Diston No. 378 & Buffalo



- 192** Two (2) saws and one (1) saw handle  
One compass hand saw, a Stanley 15-206 wallboard saw, and a saw handle marked Douglas Co. Charlott



- 193** Lot assorted tools  
Two (2) C clamps, a pulley, and a hand crank grinder. Grinder is missing tool rest and bench clamp.



- 194** Lot miscellaneous tools  
Small C clamps, scissors, clippers, etc.



- 195** Disston & Sons hand saw  
Philadelphia. 26-in. hand saw. Handle has repairs using metal strips.

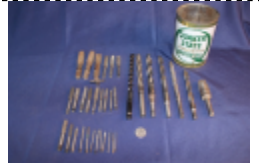


Antique Tool and Industrial Architecture Auction 11/7/2020

**196** Lot assorted tools  
Level, pry bars, large pipe wrench, calipers, and a basin wrench.



**197** Lot bits and taps  
27 taps and seven (7) bits in a 1 qt. Quaker State motor oil can.



**198** Lot assorted tools  
Two (2) squares and one (1) eggbeater drill.



**199** Assorted wall items  
Lot sandpaper in wall organizer, shelf brackets, and wire wall tool holder.



**200** 3 Paint Scrapers, Razor Scraper, Window Satche  
Scra



**201** Ratchet Brace with Various Auger Bits



**202** Lot miscellaneous tools



Antique Tool and Industrial Architecture Auction 11/7/2020

---

203 Lot miscellaneous tools



204 Two large bar clamps  
Approx. 58" in length each. Marked Canadian Patent 1927.



205 Two (2) Destaco series 527 hold down clamps



206 Three (3) Destaco series 527-F hold down clamps



207 Plumb hatchet



208 Diamond Edge Hatchet  
marked Diamond Edge Shapleigh Hardware



209 Buster Brown Shoes Hatchet  
marked Buster Brown Shoes



210 Broad Hatchet  
Blacksmith made



Antique Tool and Industrial Architecture Auction 11/7/2020

- 211** Buffum tamper  
 Marked Louisiana, MO Buffum Tool Co. No. 1245



- 212** Buffum buggy jack  
 Marked Louisiana, MO Buffum Tool Co.



- 213** Buffum cook stove  
 Marked only with peace sign.



- 214** Buffum concrete tool  
 Marked Buffum Tool Co. 1207 Louisiana, MO with peace sign.



- 215** Buffum concrete tool  
 Marked Buffum Tool Co. 1208 Louisiana, MO with peace sign.



- 216** Buffum 16 in. ice tongs  
 Marked Buffum Tool Co. Louisiana, MO on both sides.



- 217** Buffum ice scraper  
 Marked Buffum Tool Co. Louisiana, MO with peace sign.



Antique Tool and Industrial Architecture Auction 11/7/2020

- 218** Buffum wheel puller  
 Marked Buffum Tool Co. Louisiana, MO with peace sign. Pat Jan 8-17



- 219** Buffum Neverslip Wrench  
 Marked Buffum Tool Co. Louisiana, MO with peace sign. Also has three taps in center handle.



- 220** Buffum open end with socket end wrench  
 Marked Buffum Tool Co. Louisiana, MO with trademark peace sign.



- 221** Buffum double end bearing scraper  
 Marked Buffum Tool Co. Louisiana, MO with peace sign.



- 222** Buffum anvil hardy  
 Marked Buffum Tool Co. Louisiana, MO.



- 223** Buffum paint scraper  
 Marked Buffum Tool Co. Louisiana, MO. Approx. 17 1/2 inches in length with wooden handle.



- 224** Three (3) Buffum engineer bearing scrapers  
 Marked Buffum Tool Co. Louisiana, MO. 14, 14, & 16 1/2 inches.



## Antique Tool and Industrial Architecture Auction 11/7/2020

- 225** Three (3) Buffum engineer bearing scrapers  
Marked Buffum Tool Co. Louisiana, MO. 9 1/2, 12 1/2, & 14 inches.



- 226** Buffum bearing scraper box  
Appox. 3/4 label is intact.



- 227** Unmarked wooden bearing scraper box.



- 228** Buffum chisels and punches with tool roll pouch  
Canvas pouch marked trademark with peace sign. Chisels and punches have various marks including Buffum Tool Co. Louisiana MO.



- 229** Lot seven (7) assorted wood gouges



- 230** Lot four (4) Craftsman wood lathe gouges



- 231** Reliance draw knife  
13" wide with 8" cut.





## Antique Tool and Industrial Architecture Auction 11/7/2020

- 232 Unmarked drawknife  
16" width with 10" cut.



- 233 General No. 810 Plane Blade & Chisel Sharpener Too  
and wooden marking gauge



- 234 Primitive Wood Spoke Shave



- 235 Cabinet Makers Spokeshave  
Cherry wood, marked Bagshaw & Field Phila



- 236 Cabinet Makers Spokeshave  
marked Sheffield, Made in England



- 237 Coachmakers Draw Knife



- 238 Four (4) Socket Chisel & two (2) Sharpening Stones  
DE, Chipaway, Witherby,



## Antique Tool and Industrial Architecture Auction 11/7/2020

- 239** Carpenters Adze  
Blacksmithed made, long handle



- 240** Stanley No. 45 Combination Plow Plane  
with 17 irons in original wood case container



- 241** Shapleigh Day & Co Rabbet Plane  
Beach Wood, marked Shapleigh Day & Co. No. 103 N. Main St St. Louis Mo - F. J. Metsler



- 242** Bailey No. 4 Jack Plane  
Corregated sole, blade marked Stanley



- 243** Wood Bench Plane  
Razed, Blade marked Moulson Brothers



- 244** Transition Bench Plane  
Marked Union ???



- 245** Bailey Stanley No 27 1/2 Transition Plane  
15" Long



Antique Tool and Industrial Architecture Auction 11/7/2020

**246** Unmarked Block Plane Transition  
Blade marked 9" Edgewood Tool Company



**247** Sargent & Co 9" Transition Block Blade  
Blade marked Sargent



**248** Screw arm groove plane



**249** Horse Tether  
marked U.S. 50 lb



**250** Hannibal Livestock Auction Sign  
Metal 32" x 40" 2 sided sign, lotta rust



**251** Shingle Froe  
Blacksmith made



**252** White Porcelain Cast Iron Rope Hanger  
5 Pegs, pegs are 6 1/2" L, back is 13 3/4" L (lot 1 of 2)



Antique Tool and Industrial Architecture Auction 11/7/2020

**253** White Porcelain Cast Iron Rope Hanger  
5 Pegs, pegs are 6 1/2" L, back is 13 3/4" L (lot 2 of 2)



**254** Rain Gutter End Crimping Anvil  
marked Pat Jan 25 98



**255** Cast iron two-burner stove



**256** Alphabet Lettering Tool Stamping set  
in a wooden lidded container case



**257** Numbering Tool Stamping set  
in a wooden lidded container case



**258** Sparkplug Collection  
(35 pieces) Allstate, Firestone, AC, Champion, Mopar, Bosch, Napa, NGK ...



**259** Various Sized Log Dogs (4)  
also called Pinch Dogs



Antique Tool and Industrial Architecture Auction 11/7/2020

**260** Stanley No. 30 Level  
Brass end plates



**261** Starrett Co. Outside Calipers  
marked The Starrett Co. - 1 large 21" 1 small 6 1/2"



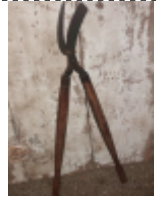
**262** Wood Hinged Box  
with 2 set of calipers, 2 angle squares, zippered pencil pouch



**263** The Cornelius Co. airbrush air compressor



**264** Long Wood Handled Pruning Nippers



**265** Pair of Wheel Dollies  
also called wheel skates



**266** Adjustable stand with heavy cast base  
Adjusts between five (5) and seven (7) feet.



Antique Tool and Industrial Architecture Auction 11/7/2020

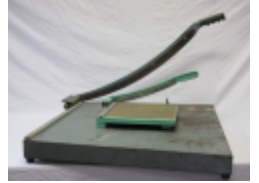
**267** Medium weight adjustable height work stand



**268** Lightweight adjustable height work stand



**269** Two (2) paper cutters. Large & small.



**270** Continental, Simmons, & Bluegrass files  
 One (1) Continental USA flat 12 in., One (1) Simmons Nucut flat 10 in., & one (1) Bluegrass 8 in.



**271** Keen Kutter & Great Western files  
 One (1) Keen Kutter combination flat and double bevel face 8 in., one (1) Great Western combination flat in., Great Western combination flat and round face 6 in.



**272** Winchester, G&H & McGaffery files  
 One (1) Winchester 6 in. round file, One (1) G&H brand 7 in. round file, One (1) McGaffery combinatio



**273** Vacuum pump for deaerating liquid



Antique Tool and Industrial Architecture Auction 11/7/2020

274 Pressure pots for liquid spray.



275 Econoline Balance Model BG20  
Tool suspension device.



276 8-section hardware bin  
Dispenser for nails and screws.



277 Foredom Flexshaft variable speed rotary tool  
New flex shaft and two (2) brushes.



278 E.C. Simmons Keen Kutter Adjustable Screw Handle  
U



279 Coopers Bung Hole Reamer



280 Old Powder Stamp Brush  
and negative dust brush



Antique Tool and Industrial Architecture Auction 11/7/2020

- 281** Seven (7) Assorted Crank Handles  
 Victrola crank, Buck's, Quick Meal, Quick Meal Jr. Ranges, others unmarked



- 282** Two (2) Old Brass Bull Leads



- 283** Six (6) Brass Hose Nozzles



- 284** Sharpening stone  
 In box. Includes coarse and fine grain. Box is 9 1/2 x 2 3/4 in.



- 285** Soft Arkansas stone with wood block



- 286** New Water stone in box, Japan



- 287** Two (2) C clamps USA  
 One (1) 5 in., one (1) 6 in.



- 288** Two (2) 6 inch iron C clamps





Antique Tool and Industrial Architecture Auction 11/7/2020

**289** Two (2) 6 inch aluminum C clamps USA



**290** Two (2) 5 inch iron C clamps



**291** Two (2) 4 inch iron C clamps



**292** Three (3) 5 inch steel shallow steel C clamps



**293** Seven (7) assorted C clamps



**294** 1/4 x 20 machine screws with large knurled heads  
Package of 10



**295** One (1) Johnson & Three (3) Black Diamond files  
Johnson flat bastard 8 in., Black Diamond flat 10 in., Black Diamond 3-face 6 in., Black Diamond 3-face



**296** Portugal & India files  
One (1) Tome - Portugal flat bastard 10 in., one (1) J-K India knife form taper 10 in., one (1) India with b  
bastard 6 in.



Antique Tool and Industrial Architecture Auction 11/7/2020

- 297** O.R.R.O. thick heavy combination cut file  
Possible railroad, One face course tooth cut, second face medium course double cut.



- 298** Homelite & Traryd files  
One (1) 8 in. chain file marked Homelite. Two (2) Traryd Sweden chain files.



- 299** Six (6) misc. files  
2- FB, 10", 2FB- 8" 1 square 4/ face 8" and  
One three face, 6"



- 300** Three (3) wooden parallel clamps  
One marked Trademark Jorgenson Made by Adjustable Clamp Co. Chicago, Ill.



- 301** Three C clamps  
Sargent & Co 17, Phoenix Mfg Co 6, & Phoenix 2 1/2



- 302** Lot miscellaneous items  
Metal wall pocket, a metal Salem Menthol ash tray, a Vaughan's Safety Roll can opener, and a combinati  
opener/corkscrew.



- 303** Three (3) oilers, with hog ring items  
Decker Hill's hog ringer with two (2) boxes hog rings.



Antique Tool and Industrial Architecture Auction 11/7/2020

**304** Assorted hardware aprons  
Rauch Lumber Hazelwood, MO  
Tucker-Kirby Co.



**305** Assorted yardsticks  
The Astrup Company boat supplies, Home Depot, FHW Equipment Co. Inc. Bridgeton, MO; Piedmont S  
Insurance, Gurr & Associates Environmental Consultants, Benco Sales Corp.



**306** Lot assorted tools  
Brace, compass saw, screwdriver and Stanley No. 93 marking gauge.



**307** Parker-Kalon No. O.X. Metal Punch  
Original Metal Case



**308** Flat of assorted 4 Tools,  
2 bearing scrapers, pry bar, blacksmith made tongs



**309** 2 Saw Sets, Wire Cutters



**310** Many Plane Irons & Assorted Tool Parts



Antique Tool and Industrial Architecture Auction 11/7/2020

---

- 311** Lot casters  
Seven (7) new; pair with roll stops



- 
- 312** Five (5) small steel file boxes

