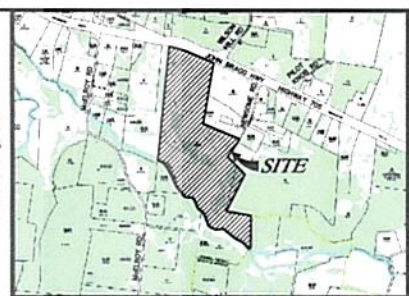


SOIL SITE 1
SCALE 1"=100'

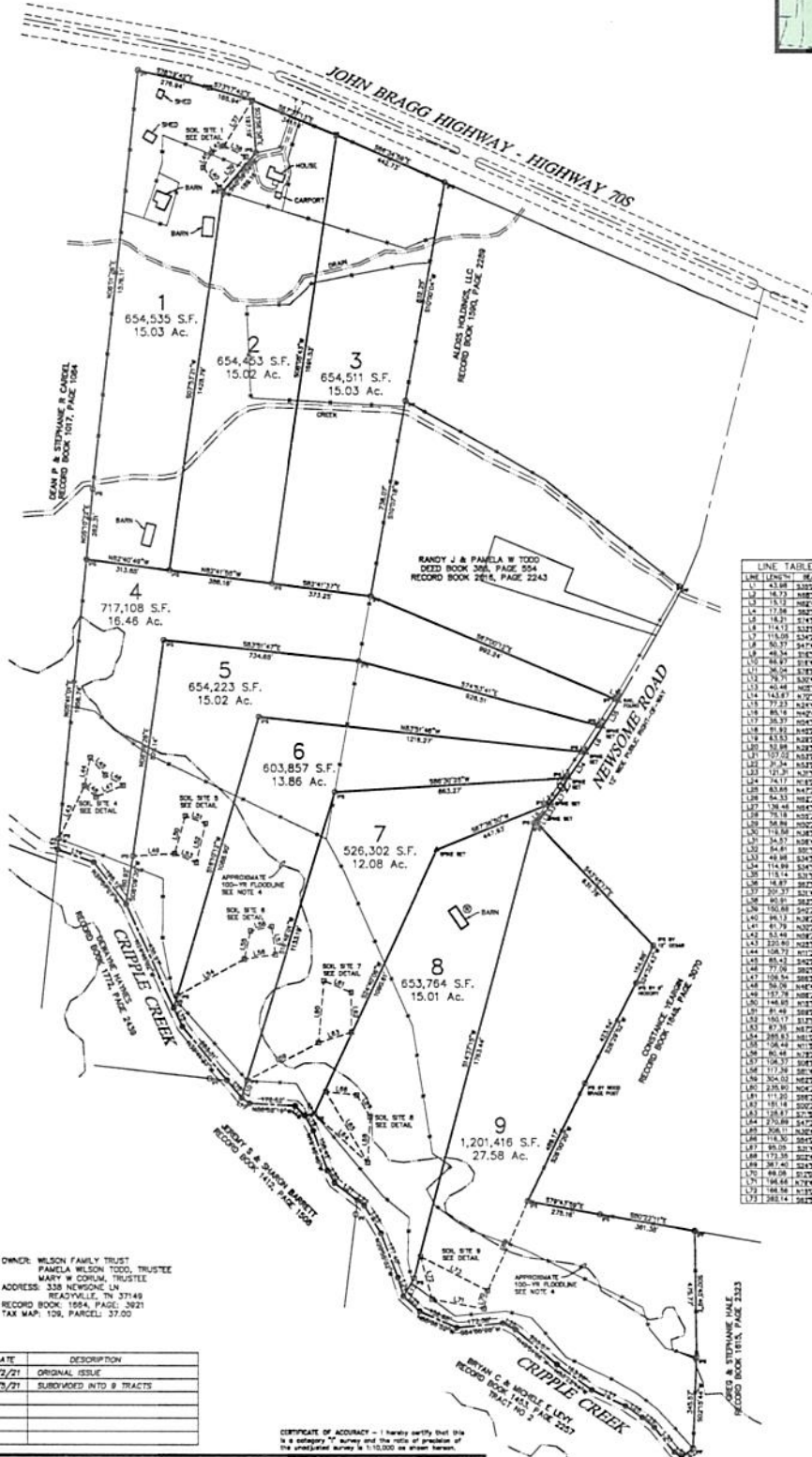
LEGEND

- Property Line or Right-of-Way Line
- Boundary Correlation
- Common Line
- Minimum Building Setback Line
- Iron Pipe Set
- Iron Pipe Found
- Rebar
- Rebar Found
- Survey Point
- Corner Marker Found
- Set Site Stone

- PLAT NOTES**
- In Tennessee, it is a requirement for the Underground Utility Damage Prevention Act that anyone who engages in excavation must notify or locate underground utility owners, no less than three nor more than ten working days of their intent to excavate. A list of these utilities may be obtained from the County Register of Deeds. Those utilities that participate in the Tennessee One Call system can be notified by calling toll free 1-800-351-1111.
 - Underground utilities shown were located using electronic detection systems, and site photos information obtained from the respective utility companies. The existence or nonexistence of the utilities shown and any other utilities which may be crossed on this site or adjacent shall be confirmed with the utility owner prior to commencing any work.
 - Portions of this parcel are included in areas designated as "Special Flood Hazard" on the National Flood Insurance Program Community Flood Map No. 42055 0223-B, dated 7/9/2007, Zone AE 1.
 - This survey was performed using a Real Time Kinematic (RTK) Global Positioning System (GPS). This is a dual frequency, baseless GPS survey system with a horizontal accuracy of 0.01 meters and a vertical accuracy of 0.02 meters. Horizontal Datum = NAD 1983 Vertical Datum = NAVD 1988

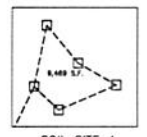


LOCATION MAP
N.T.S.

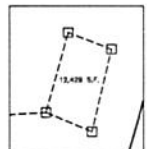


LINE TABLE

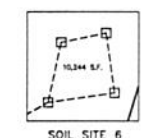
LINE	LENGTH	BEARING
L1	43.98	S85°22'28"W
L2	15.13	S88°24'22"E
L3	17.76	S28°24'17"E
L4	18.21	S14°52'52"E
L5	11.41	S12°22'27"W
L6	11.00	S42°22'22"E
L7	50.37	S47°48'42"W
L8	48.36	S70°18'18"E
L9	48.87	S18°46'38"W
L10	26.95	S18°24'38"E
L11	26.95	S18°24'38"E
L12	40.48	N02°14'01"E
L13	14.84	S72°24'12"E
L14	77.23	S47°48'42"W
L15	84.33	N02°14'01"E
L16	38.37	N04°17'48"W
L17	83.86	S47°48'42"W
L18	43.55	S18°24'38"E
L19	53.98	S42°22'22"E
L20	52.52	S18°24'38"E
L21	27.26	S18°24'38"E
L22	17.31	S18°24'38"E
L23	74.17	S18°24'38"E
L24	84.33	S18°24'38"E
L25	84.33	S18°24'38"E
L26	78.48	S18°24'38"E
L27	78.48	S18°24'38"E
L28	58.81	S02°24'18"E
L29	58.81	S02°24'18"E
L30	54.57	S18°24'38"E
L31	54.57	S18°24'38"E
L32	54.57	S18°24'38"E
L33	49.48	S18°24'38"E
L34	114.84	S18°24'38"E
L35	114.84	S18°24'38"E
L36	18.87	S18°24'38"E
L37	80.81	S18°24'38"E
L38	100.88	S18°24'38"E
L39	100.88	S18°24'38"E
L40	100.88	S18°24'38"E
L41	100.88	S18°24'38"E
L42	100.88	S18°24'38"E
L43	100.88	S18°24'38"E
L44	100.88	S18°24'38"E
L45	100.88	S18°24'38"E
L46	100.88	S18°24'38"E
L47	100.88	S18°24'38"E
L48	100.88	S18°24'38"E
L49	100.88	S18°24'38"E
L50	100.88	S18°24'38"E
L51	100.88	S18°24'38"E
L52	100.88	S18°24'38"E
L53	100.88	S18°24'38"E
L54	100.88	S18°24'38"E
L55	100.88	S18°24'38"E
L56	100.88	S18°24'38"E
L57	100.88	S18°24'38"E
L58	100.88	S18°24'38"E
L59	100.88	S18°24'38"E
L60	100.88	S18°24'38"E
L61	100.88	S18°24'38"E
L62	100.88	S18°24'38"E
L63	100.88	S18°24'38"E
L64	100.88	S18°24'38"E
L65	100.88	S18°24'38"E
L66	100.88	S18°24'38"E
L67	100.88	S18°24'38"E
L68	100.88	S18°24'38"E
L69	100.88	S18°24'38"E
L70	100.88	S18°24'38"E
L71	100.88	S18°24'38"E
L72	100.88	S18°24'38"E
L73	100.88	S18°24'38"E
L74	100.88	S18°24'38"E
L75	100.88	S18°24'38"E
L76	100.88	S18°24'38"E
L77	100.88	S18°24'38"E
L78	100.88	S18°24'38"E
L79	100.88	S18°24'38"E
L80	100.88	S18°24'38"E
L81	100.88	S18°24'38"E
L82	100.88	S18°24'38"E
L83	100.88	S18°24'38"E
L84	100.88	S18°24'38"E
L85	100.88	S18°24'38"E
L86	100.88	S18°24'38"E
L87	100.88	S18°24'38"E
L88	100.88	S18°24'38"E
L89	100.88	S18°24'38"E
L90	100.88	S18°24'38"E
L91	100.88	S18°24'38"E
L92	100.88	S18°24'38"E
L93	100.88	S18°24'38"E
L94	100.88	S18°24'38"E
L95	100.88	S18°24'38"E
L96	100.88	S18°24'38"E
L97	100.88	S18°24'38"E
L98	100.88	S18°24'38"E
L99	100.88	S18°24'38"E
L100	100.88	S18°24'38"E



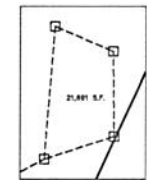
SOIL SITE 4
SCALE 1"=100'



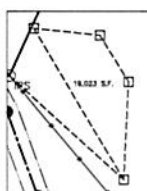
SOIL SITE 5
SCALE 1"=100'



SOIL SITE 6
SCALE 1"=100'



SOIL SITE 7
SCALE 1"=100'



SOIL SITE 8
SCALE 1"=100'



SOIL SITE 9
SCALE 1"=100'

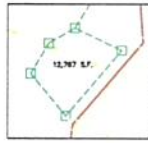
NO.	DATE	DESCRIPTION
0	2/2/21	ORIGINAL ISSUE
1	4/2/21	SUBDIVIDED INTO 9 TRACTS

CERTIFICATE OF ACCURACY - I hereby certify that this is a survey of the land and the title of the parcel as shown herein.

PROPERTY SURVEY
ALVIN WILSON
ESTATE
 19th CIVIL DISTRICT - RUTHERFORD COUNTY - TN
 DATE: FEBRUARY, 2021 SCALE 1"=200' SH. 1 OF 1

ROBERTS
 LAND SURVEYING

11/2021 Property Survey, Tract, Subdivided, Property Survey, 4/2/2021 8:41:15 AM



SOIL SITE 1
SCALE 1"=100'

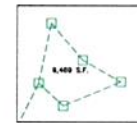
LEGEND

- Property Line or Right-of-Way Line
- Boundary Line
- Survey Point
- Iron Pin Found
- Survey Point
- Conk. Marker Found
- Set the Stone

- PLAT NOTES**
- In Tennessee, it is a requirement of The Underground Utility Damage Prevention Act that anyone who engages in excavation must notify of known underground utility owners, no less than three nor more than the working days of their intent to excavate. A list of these utilities may be obtained from the County Register of Deeds. Those utilities that participate in the Tennessee One Call system can be notified by calling toll free 1-800-351-1111.
 - Underground utilities shown were located using existing geophysical methods, and also from information received from the respective utility companies. The existence or nonexistence of the utility shown and any other utilities which may be present on this site are not guaranteed or confirmed with the utility owner prior to commencing any work.
 - Persons may be liable for additional damages, and/or penalties, by neglect or prohibition, that a complete file search may reveal.
 - Portions of this parcel are included in areas designated as "Special Flood Hazard" on the National Flood Insurance Program Community Flood Insurance Study No. 42255-123-5, dated 1/3/2007, Zone AE 1.
 - This survey was performed using a Real Time Kinematic (RTK) Global Positioning System (GPS). This is a dual frequency Trimble 5815 survey grade system with a horizontal accuracy of 0.005 meters and a vertical accuracy of 0.005 meters. Horizontal Datum = NAD 1983 Vertical Datum = NAVD 1988



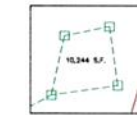
LOCATION MAP
N.E.S.



SOIL SITE 4
SCALE 1"=100'



SOIL SITE 5
SCALE 1"=100'



SOIL SITE 6
SCALE 1"=100'



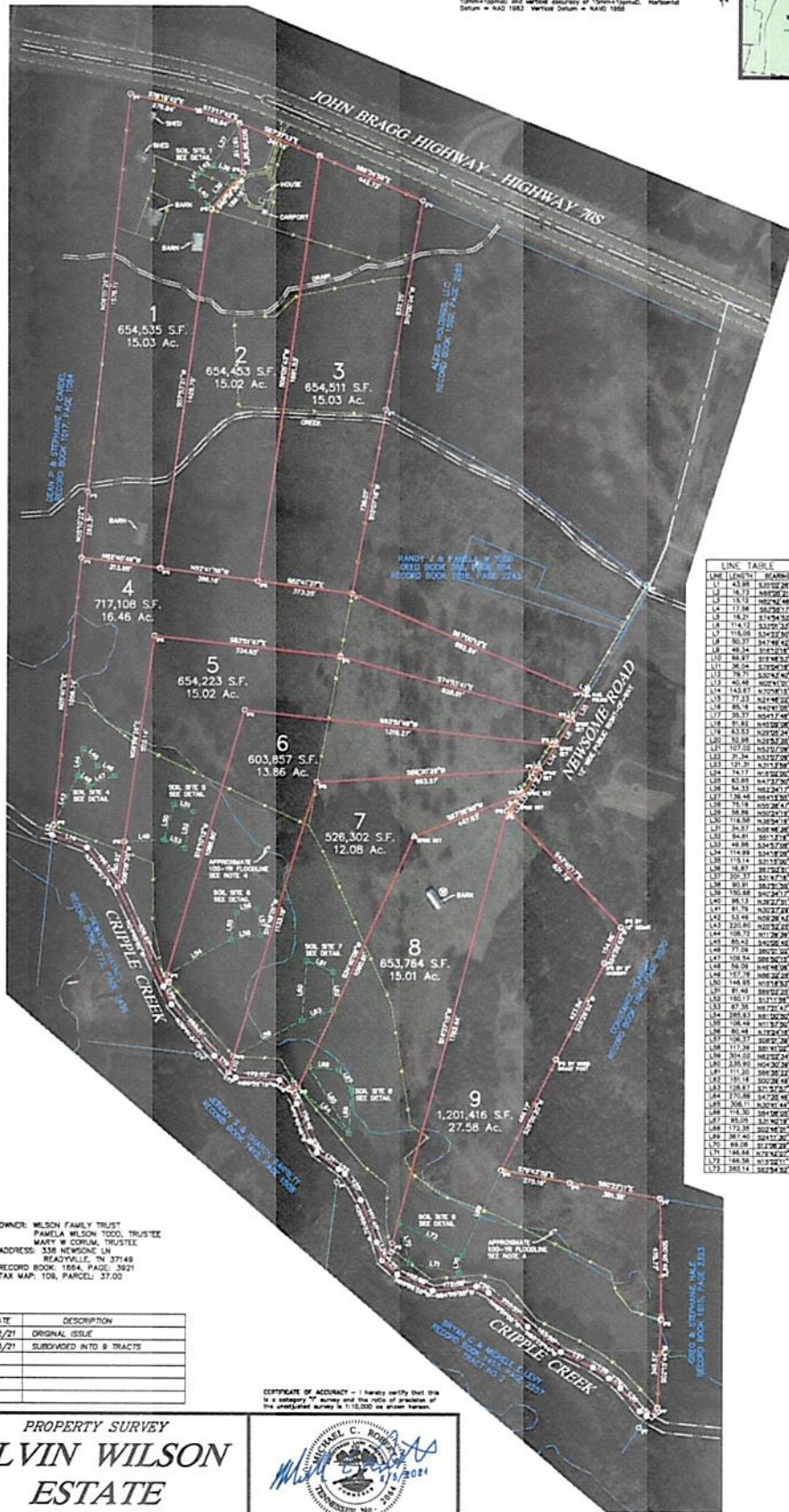
SOIL SITE 7
SCALE 1"=100'



SOIL SITE 8
SCALE 1"=100'



SOIL SITE 9
SCALE 1"=100'



LINE TABLE

LINE	BEARING	MEASUREMENT
L1	43.89°	105.222878'
L2	11.21°	105.222878'
L3	15.53°	105.222878'
L4	117.94°	105.222878'
L5	11.21°	105.222878'
L6	114.43°	105.222878'
L7	11.21°	105.222878'
L8	10.37°	105.222878'
L9	11.21°	105.222878'
L10	11.21°	105.222878'
L11	11.21°	105.222878'
L12	11.21°	105.222878'
L13	11.21°	105.222878'
L14	11.21°	105.222878'
L15	11.21°	105.222878'
L16	11.21°	105.222878'
L17	11.21°	105.222878'
L18	11.21°	105.222878'
L19	11.21°	105.222878'
L20	11.21°	105.222878'
L21	11.21°	105.222878'
L22	11.21°	105.222878'
L23	11.21°	105.222878'
L24	11.21°	105.222878'
L25	11.21°	105.222878'
L26	11.21°	105.222878'
L27	11.21°	105.222878'
L28	11.21°	105.222878'
L29	11.21°	105.222878'
L30	11.21°	105.222878'
L31	11.21°	105.222878'
L32	11.21°	105.222878'
L33	11.21°	105.222878'
L34	11.21°	105.222878'
L35	11.21°	105.222878'
L36	11.21°	105.222878'
L37	11.21°	105.222878'
L38	11.21°	105.222878'
L39	11.21°	105.222878'
L40	11.21°	105.222878'
L41	11.21°	105.222878'
L42	11.21°	105.222878'
L43	11.21°	105.222878'
L44	11.21°	105.222878'
L45	11.21°	105.222878'
L46	11.21°	105.222878'
L47	11.21°	105.222878'
L48	11.21°	105.222878'
L49	11.21°	105.222878'
L50	11.21°	105.222878'
L51	11.21°	105.222878'
L52	11.21°	105.222878'
L53	11.21°	105.222878'
L54	11.21°	105.222878'
L55	11.21°	105.222878'
L56	11.21°	105.222878'
L57	11.21°	105.222878'
L58	11.21°	105.222878'
L59	11.21°	105.222878'
L60	11.21°	105.222878'
L61	11.21°	105.222878'
L62	11.21°	105.222878'
L63	11.21°	105.222878'
L64	11.21°	105.222878'
L65	11.21°	105.222878'
L66	11.21°	105.222878'
L67	11.21°	105.222878'
L68	11.21°	105.222878'
L69	11.21°	105.222878'
L70	11.21°	105.222878'
L71	11.21°	105.222878'
L72	11.21°	105.222878'
L73	11.21°	105.222878'

OWNER: WILSON FAMILY TRUST
 PAMELA WILSON TRUSTEES
 MARY W. CORUM TRUSTEES
 ADDRESS: 138 NEWSCOME LN
 READINGVILLE, TN 37148
 RECORD BOOK: 1854, PAGE: 2921
 TAX MAP: 109, PARCEL: 3700

NO.	DATE	DESCRIPTION
0	2/2/21	ORIGINAL ISSUE
1	4/3/21	SUBDIVIDED INTO 9 TRACTS

CERTIFICATE OF ACCURACY - I hereby certify that this is a survey of a parcel of land and the area of the same as shown herein.

ROBERTS LAND SURVEYING
 MICHAEL C. ROBERTS
 LICENSED SURVEYOR
 NO. 10001
 EXPIRES 12/31/2024

PROPERTY SURVEY
ALVIN WILSON
ESTATE
 19th CIVIL DISTRICT - RUTHERFORD COUNTY - TN
 DATE: FEBRUARY, 2021 SCALE 1"=200' SHEET 1 OF 1

© 2021 Roberts Land Surveying, Inc. All Rights Reserved. Property Survey, 4/27/2021, 8:46:03 AM