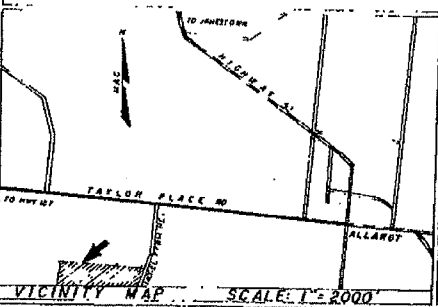
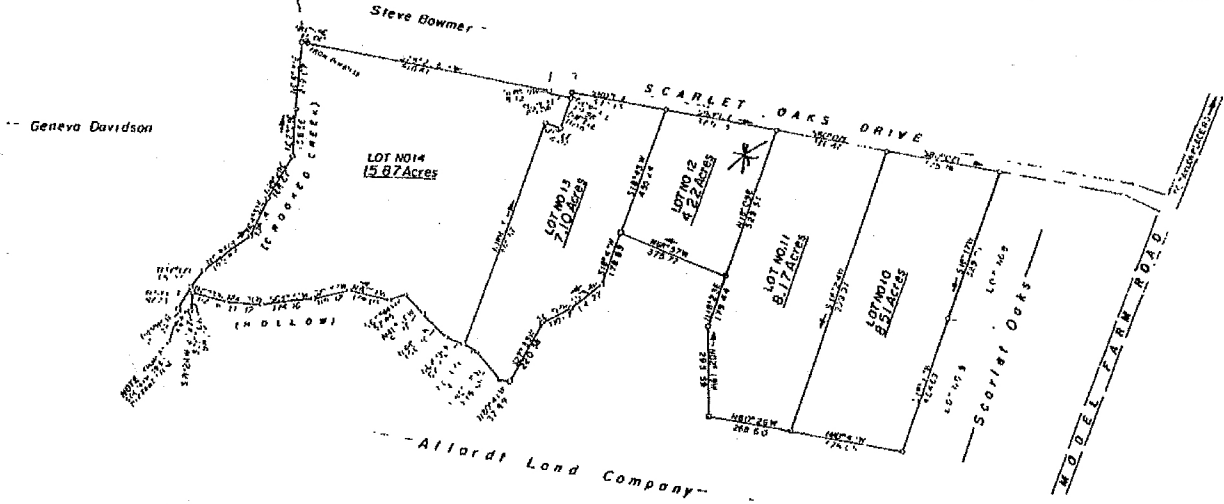


SCARLET OAKS PHASE IV



PLEASE REVISION TO SHOW CHANGE IN ACRESAGE ON LOT NO. 11, 12, 13, AND NO. 14 ON MARCH 20, 2000

THE PLACED IN THIS SURVEY IS UNLESS OTHERWISE NOTED.

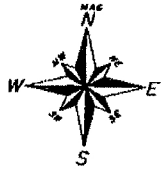
BEING PART OF MAPS 100-200-101 AND A SMALL PORTION OF MAP 100-200-102 ON THE WEST SIDE.

FDY SURVEY COMPANY
JAMESTOWN, TENNESSEE
FOR
ALLARD LAND COMPANY

TENNESSEE CO TENNESSEE
SURVEYED BY: FRED W. FLOYD
DRAWN BY: 8873 J. ROBERTSON
DATE: 3-24-98 SCALE: 1"=200'
DWS NO 3533-A



I HEREBY CERTIFY THAT THIS IS A
CORRECT AND TRUE SURVEY AND THE
BOUNDARIES OF THE PHASES OF THE
SUBDIVISION SHOWN ON THIS MAP
AS SHOWN HEREON.



100' 0" 100' 200'
SCALE

JAMES COUNTY, TENNESSEE
Map No. 100-200-101
2214 P.M. On November 1, 2001
Recorded on Book 94 Pages 13-15
State Tax # 5-040-00000-0-0-00
Recorded on 15-04-00000-0-0-00
STATE RECORDING AGENCY # 11-00
Recorder of Deeds: JAMES STEPHENS
Surveyor: JAMES STEPHENS
Book # 200105000-10-1000
Book #4 Page 13