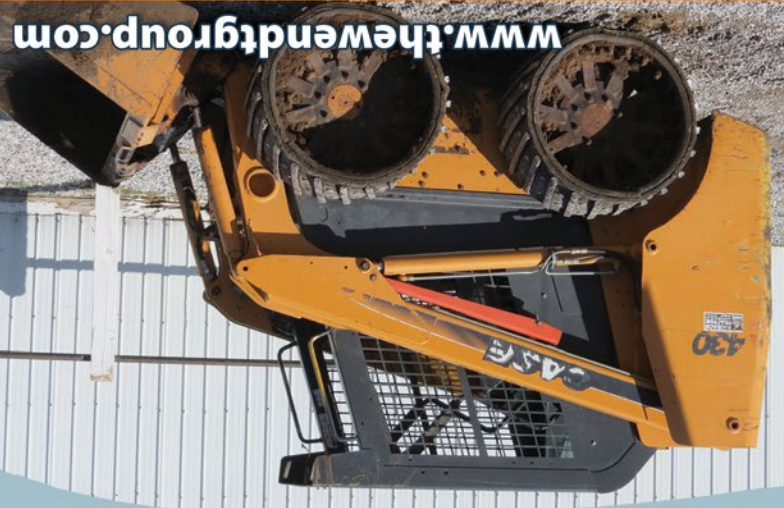


WED, APRIL 8TH • 10AM

www.thewendtgroup.com



5693 Hazelbrush Rd, Shelby, Ohio 44875

FARM EQUIPMENT AUCTION

Forst

614.626.SOLD
www.thewendtgroup.com



Kevin Wendt, CAI - President / Auctioneer / Broker
419.566.1599 | kevin@thewendtgroup.com
Dale Evans - General Manager / Auctioneer
260.894.0458 | dale@thewendtgroup.com
Nick Cummings, CAI - Auctioneer / Auction Advisor
740.572.0756 | nick@thewendtgroup.com

GET AUCTION
INFO BY TEXT!
TEXT AUCTION
TO 614-636-4191



FARM EQUIPMENT AUCTION
WED, APRIL 8TH, 2020 • 10AM

Forst

121 Jackson St., Plain City, OH 43064

Forst

FARM EQUIPMENT AUCTION

5693 Hazelbrush Road, Shelby, Ohio 44875

Tractors • Dozer • Skidloader
Tillage/Planting • Mixer-Grinder
Hay & Silage Equipment
Livestock Equipment



WEDNESDAY, APRIL 8TH • 10AM

Horst

FARM EQUIPMENT AUCTION

5693 Hazelbrush Road, Shelby, Ohio 44875

WEDNESDAY, APRIL 8TH • 10AM

Auction Notes: The Horsts are moving out of state and are selling their equipment. Several items were purchased new. Very few small items. Please be on time.

AUCTION LOCATION: 5693 Hazelbrush Road, Shelby, Ohio 44875

Directions: From **Plymouth**, travel south on OH-98 for 5 miles to OH-598. Turn left onto OH-598 and travel south for ½ mile to Sawyer Road/Hazelbrush Road. Turn left and travel east for ½ mile to the property on the south side of the road.

From the automatic signal on the north edge of **Shelby**, travel north on OH-61 for 2½ miles to Hazelbrush Road (just beyond the Maranatha Worship Center). Turn left and travel west for 3 miles to the property on the south side of the road. (Note: there is a slight jog left and back right at Kuhn and Hazelbrush roads)

**6 miles south of Plymouth, Ohio • 15 miles northeast of Bucyrus, Ohio
18 miles northwest of Mansfield, Ohio • 25 miles west of Ashland, Ohio**

TRACTORS

- **CAT Challenger 45**, 18" tracks set on 80" spacing, 10 nose weights, 12 chin weights, 4 hyd remotes, 3 pt, 1000 PTO, Trimble auto-steer ready, 5745 hrs, SN 1DR01850
- **Case IH Farmall 85U**, MFWD, 18.4 R30 rear, 12.4 R24 front, 2 hyd remotes, 3 pt, 540/1000 PTO, 24-speed, C/H/A, 3457 hrs, SN ZAJL04053
- **AGCO LT 75A**, MFWD, 18.4 R34 rear (sells on rubber), open station, Auto 4, 16-speed, partial power shift, 2 hyd remotes, 3 pt, 540/1000 PTO, rops, 3115 hrs, SN317040. Sells w/ **AGCO FL 400A loader**, joy-stick control, skid-loader-mount 84" bucket

DOZER

- **Case 550 G**, 8' 6-way blade, 16" tracks, rear hitch, (under carriage good)

SKID LOADER

- **Case 430**, 65" bucket, 12-16.5 tires (sells on rubber), hyd quick attach, Case hand controls, single-speed, 7400 hrs, SN JAF417394

PLANTING & TILLAGE

- **White 6100 6-row, 30" corn planter**, Martin row cleaners, markers, no-till coulters, rubber press wheels, dry fert 2x2, 150 gal poly liquid fert tank, in-furrow liquid, electric liquid pump, air meter, row hoppers, hyd fill auger, 540 hyd fan pump

- **15' Great Plains 1500 drill**, 8" spacing, single rubber press wheels, markers, grass seeder, center pivot hitch, 11,243 acres, SN GP10377C
- **18' Sunflower 6220 field finisher**, 10" spring cushion sweeps, front disc, front basket, hyd fold, rear hitch & hyd, walking tandems, 5-bar drag, SN 6296-111
- **15' Airway AWST150**, CCT, 14" basket, tandem 12.5 L-15 tires, rear hitch & hyd, SN 92090680002
- **Case IH 2500 4-shank ripper**, Ecolo-til, no-till points, coulters, 3pt, SN JFH0006984
- **25' White 272 Disc**, 9" spacing, rock flex, hyd fold, tandem 11L-15 tires
- **Yetter 6x30 Danish tine cultivator**, crop shields, 3 pt
- **15' Unverferth 220 double rolling basket**, single bar harrow, extendable tongue
- **23' Unverferth Rolling Harrow II**, double rolling basket, single breaker bar, hyd fold
- **15' Case IH 181MT 6-row rotary hoe**, 3 pt
- **Dunham Lehr cultimulcher**, tandem inboard wheels, hyd raise, rear hitch
- **16' John Deere 215 disc**, 9" spacing
- **14' Harragator**

FERTILIZER/LIME SPREADER

- **Stoltzfus 6-ton**, inverted V, hyd drive spinners, 24" fans, flat bar every other chain, ground drive web, walking tandem, 31x3.50-15 tires, SN M2756107



- **McCurdy 250 bu fertilizer wagon**, poly cup, poly auger, hyd drive on JD gear

SPRAYER

- **Hardi Ranger 2200**, pull type, 600-gal poly tank, 60' booms, 20" nozzle spacing, chemical pump, chemical inductor, 540 PTO, 11.2-38 tires, Hardi 2500 rate controller

GRAVITY BED WAGONS

- **J&M 385** on 12-ton gear, 11R-22.5 tires
- **Killbros 385** on 12-ton gear, 11R-22.5 tires
- **McCurdy 250** on JD gear, 11L-15 tires
- **EZ Flow 220** on DMI gear, 11L-15 tires

MIXERS

- **Jay-Lor 4425**, galvanized rapid-discharge conveyor, heavy duty gear box, mix view window, scales, 15.0/55-17 tires, 540 PTO, SN 019252
- **Gehl 170 mixer/grinder**, hyd drive, ear-corn chute, long folding unload auger, SN 7085

HAY/SILAGE EQUIPMENT

- **New Holland FP240 forage harvester**, Metalert III, Horning Processor, electric spout, tandem axle, 1000 PTO, SN 80610
- **NH 3PN 3-row corn head**, SN 75567
- **9' NH 29P** hay head, finger-pickup auger
- **12' Hesston 1340 center-pivot disc bine**, Rubber on steel conditioner, 2-pt hitch, 1000 PTO, SN HK83251
- **New Holland 169 tedder**, pull-type, 6-basket, manual fold, 540 PTO, SN 940132
- **Hesston silage blower w/ Gandy 903JR** dry inoculant applicator, 540 PTO, SN PK5F0160

FORAGE WAGONS

- **16' Miller Pro 5300**, triple beater, front unload, 540 PTO, tandem rear axle, Miller Pro gear, SN 16-04898
- **16' Miller Pro 5200**, triple beater, front unload, 540 PTO, tandem rear axle, Gehl 410 612 gear, SN 16-01612
- **16' Miller Pro 5200**, triple beater, front unload, 540 PTO, tandem rear axle, Wenger gear, SN 16-04020
- **Quick hitches for forage wagons**

KICKER BALE WAGONS ON GEARS

- **16' Pequea**, steel floor
- **16' Pequea**, needs floor
- **18' Pequea**, needs floor
- **18' Bale King**, needs floor

PAN

- **7'x7'x36" Eversman 650**, pull type, front dolly, 6.5 cu yd, hyd, clamshell dump, tandem 11L-15 tires, SN 4939

MOLASSES TANK & LIVESTOCK EQUIPMENT

- **1600-gal poly flat bottom w/ 110 V Dayton 4KHK6A pump & hose for Molasses**
- **Priefert squeeze chute** on wheels w/ hitch
- **J&L Haysaver w/ heavy duty rubber tire** on bottom
- **7' Manure scraper**, rubber tire, skid loader attachment
- **Weaverline 537 S.S. feed cart**, 24-volt w/ charger
- **Weaverline 430 S.S. feed cart** for parts

MISCELLANEOUS

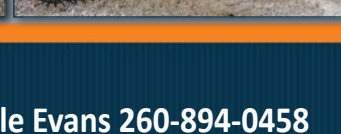
- **(2) 46" steel wheel** • **(2) 48" steel wheel**
- **(2) 60" steel wheel** • **(2) 64" steel wheel**
- **1000-gal poly nurse tank** on gear
- **15' Brillion FS1805-1 flail mower**, 1000 PTO, SN 151275
- **8"x53' GSI straight auger**, 540 PTO
- **Landa hot water pressure washer**, 220-volt
- **And more!!**

Can't Make it To the Auction?
Bid Conveniently Online At:



For Online Bidding Questions
Contact Nathan Whitney (740) 505-0482

INSPECTION DATE:
Saturday, April 4th • 10am-Noon



Sellers: Raymond & Lois Horst

For Equipment Questions, Call Raymond at 419-342-2169 • Auction Coordinator: Dale Evans 260-894-0458



Auction Terms: Cash or check with proper ID. Credit cards accepted with 4% convenience fee. Everything sells "As Is". Not responsible for accidents. Announcements made day of auction take precedence over any oral or written statements made. Food, restroom, and loader available auction day. Bring your trailers.

614.626.SOLD • www.thewendtgroup.com