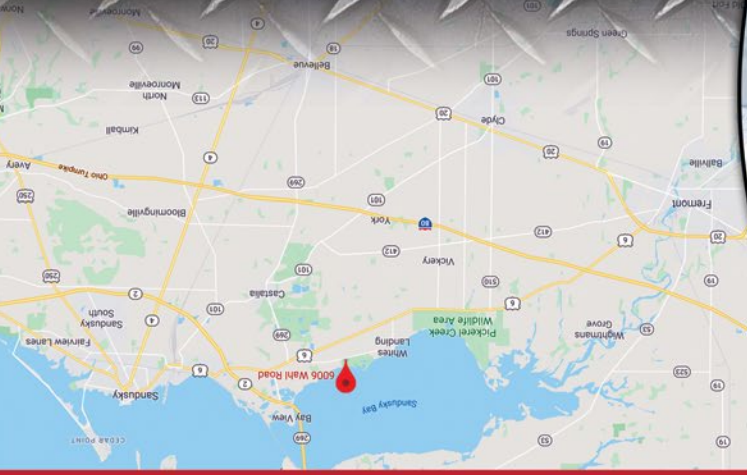


FRIDAY, FEBRUARY 7TH, 2020 • 10:30AM

www.thewendtgroup.com

THE WENDT GROUP
Land & Agricultural Asset Auctions



EQUIPMENT AUCTION

6006 Wahl Rd, Vickery, Ohio

SUTORIUS FARMS

Tractors
Tillage & Planting
Combine & Harvest

SUTORIUS FARMS

Hay Equipment
Spray Equipment
Semi, Trailer & Camper

EQUIPMENT



AUCTION

6006 Wahl Road, Vickery, Ohio

614.626.SOLD
www.thewendtgroup.com



Kevin Wendt, CAI - President / Auctioneer / Broker
419.566.1599 | kevin@thewendtgroup.com
Dale Evans - General Manager / Auctioneer
260.894.0458 | dale@thewendtgroup.com
Nick Cummings, CAI - Auctioneer / Auction Advisor
740.572.0756 | nick@thewendtgroup.com

121 Jackson St., Plain City, OH 43064

THE WENDT GROUP
Land & Agricultural Asset Auctions



FRI, FEB. 7TH • 10:30AM

EQUIPMENT AUCTION

SUTORIUS FARMS



THE WENDT GROUP
Land & Agricultural Asset Auctions

614.626.SOLD | www.thewendtgroup.com

FRIDAY, FEBRUARY 7TH, 2020 • 10:30AM

SUTORIUS FARMS

6006 Wahl Road, Vickery, Ohio

EQUIPMENT AUCTION

FRI, FEB. 7TH • 10:30AM



45 Miles East of Toledo • 10 Miles West of Sandusky • 15 Miles North of Bellevue

Directions: From Castalia, OH Travel North on SR 269 3 Miles to US 6 turn left (West) travel 1/2 mile merge right at Wiegels Point and continue straight onto Wahl Rd travel 1.8 miles.
From Port Clinton, OH Travel East on SR 2 for 6 Miles to Exit 128 SR 269 South toward Castalia go 1 mile to SR 6 turn right (West) travel 1 mile merge right at Wiegels Point and continue straight onto Wahl Rd travel 1.8 miles. **6006 Wahl Rd Vickery, OH.** Watch for Wendt Auction Signs.

Auctioneers Note: Brian has decided to reduce his row crop operation and spend more energy on his custom mowing services and Bay Area Seed Solutions LLC Pioneer Seed Dealership. What an immaculate line up of hay and farm machinery that has been shedded and well maintained and ready to go to the field. One of the cleanest lines of equipment to sell this winter. For equipment questions call Brian 419-271-5386. Very few small items please be on time and bring your trailer.

Sale Order: Small wagon load of misc, hay equip, tillage, planting, tractors, combine, spray equip, semi, trailers, camper, misc. Very few small items this auction will last less than 2 hours.

4-TRACTORS - CIH LOADER - LOADER ATTACHMENTS

- **CIH 125 Maxxum Pro MFWD**, CHA, 3 remotes, 3pt. 540/1000 pto, Air seat, 16spd pwr shuttle shift, 460/85 R42 rear-380/85 R30 front tires, rear wts, loader brackets & Joy Stick, 3103 Hrs. SN# ZABE05706
- **CIH Farmall 95 MFWD**, open station, 2 remotes, 3pt, 540/1000 pto, rear wts, loader brackets & Joy Stick, 18.4R34 rear- 13.6R24 front Michelin Agri-rib tires, 1415 hrs., SN# ZBJP50001
- **L740 CIH Self Leveling Loader**, Euro-Style w/Hyd Remote and Quick Attach, SN# YBWLH4046
- **Mast 4' Pallet Forks** Euro-Style hook up, SN# 3673
- **Mast 3 Tine Bale Spear** Euro-Style hook up, SN#17285
- **Mast 10' Snow Box** Euro-Style hook up & skid shoes, SN# 12559
- **White 2-105 Field Boss**, CHA, 2 remotes, 3pt, 540 pro, Perkins Diesel, over/under/direct trans, 18.4R/38 rear -10.00 x 16 front Firestone tires 6370 hrs, SN# 280012-406
- **Farmall H tractor**, SN# 32785
- **7' IHC Sickle Bar mower** mounted pkg for Farmall H

TILLAGE

- **Great Plains TC 5109 Turbo Chisel** 9 shank parabolic w/ rear chopping wheel, light kit, SN# GPA1706X
- **Kongskilde 2940-70 Field Cultivator** 23' standard tine, walking tandems, light kit, HD rear hitch, 3 bar flex drag w/roller, 2-1/2" new shovels, SN# 312791
- **J & M TF212 Crumbler** 25' DBL roller w/single bar harrow, Ext tongue, light kit, tandem wheel, less than 1000 acres
- **Brillion Cultipacker** 25' solid wheels, Hyd Fold w/ light kit
- **White 588 Plow** 5-18" toggle trip
- **White 548 Plow** 5-16" auto reset

PLANTING - NH3-SPRAYER - TANKS - DYKE CONTAINMENT - USC SEED TREATING EQUIP

- **Kinze 3500 Twin Line Soybean Planter** 8-16 row w/ KP2 Monitor, brush meters, rubber closing wheels, no-till coulters, markers, 2nd owner, SN# 3500-903234
- **CIH 1200PT AFS Corn Planter** 12R-30" Liquid, Sunco DBL Disc unit mid fert coulters, plumbed for pop up on row fertilizer, Delta Precision Down Force & row flow, Markers, Precision 20/20 monitor, 1000 pto pump & cooler option, 1 owner, low acres, SN#C-BJ022032



- **Dalton D3028 NH3 Applicator** 11 shank w/Raven flow control & 450 monitor, Coulters & mole knife, end transport, low acres, SN# 12439
- **IHC 183 6RN 3pt Cultivator** w/rolling shields
- **Top Air TA1100 pull type Sprayer** 60' front fold booms, Hyd Drive pump, Triple Nozzle bodies, stainless plumbing, foamer, rinse tank, Raven 440 controller, 13.6 x 38 Tires, 1 Owner, SN# B21440114
- **2350 gallon Ace Roto Mold skid tank** w/ bottom drain
- **1000 gallon Ace Roto Mold skid tank** w/ bottom drain
- **2-10,000 gallon Verticle poly tanks**
- **4-2500 gallon Blue Verticle Poly Tanks**
- **Dyke Tank Containment System** measures 35' x 48' x 18" tall. 120 day removal time
- **UM Seed Wagon w/ Gear** Dual Compartment w/ brush auger, porta power, roll tarp
- **USC 60 gallon treatment tank** w/ calibration tube model PSA60S22010, SN# 17085
- **USC 30 gallon treatment SS tank** w/stand & scale model PSA30S12001, SN# 17865
- **USC 16 gallon Inoculant** w/pump & Stand model PSS15P01000, SN# 17862

SEMI TRUCK - GRAIN TRAILER - DROP DECK TRAILER - CAMPER

- **2006 Western Star 4900 SB Semi Truck** w/ day cab, Cat C13 425 HP motor, 10 spd EF Transmission, Cruise, Dual exhaust, dual fuel tanks, 12K front & 40K rear axles, Exterior Aluminum wheels, 11.0/22.5 tires, 186" wheel base, 591,458 miles, Vin# 5KJJALDE46PV95544
- **2010 Wilson Commander Grain Trailer** 40' x 72" sides w/stainless front & rear, roll tarp, Ag Hoppers, Air ride, exterior aluminum wheels, 1100 x 24.5 tires, 1 owner, Vin# 4WWSBFXA9B3616803
- **1969 Rogers Drop Deck Trailer** 48' w/tandem axle 1100 x 22.5 tires, Vin # A411
- **2006 JAYCO 5th Wheel Camper** 27.5 Ft RKS w/slide out, Vin # 1889706

HAY EQUIPMENT - ZERO TURN MOWER - TIRES & DUALS - MISC EQUIP

- **Woods BW180HD Batwing Mower** 15' rotary cutter, 1 owner, SN# 1192871
- **CIH DCX 101 Disc Bine** 540 pto, dual rubber rolls, 1 owner, SN# Y8B651656
- **Krone T38 Rotary Rake** 9' model Swadro 38T, pto, 1 owner, SN# KS742920
- **CIH SBX 540 Baler** Twine, 540 pto, Hyd Pickup & swing, Hyd Bale tension, 1/4 turn bale chute, 30 gallon automated acid applicator w/sensors, 1 owner, SN# HBJ003270
- **New Holland 1037 Stackliner Bale Wagon** pull type w/hand controls, 540 pto, new bale counter, SN#2418
- **1-Haywagon w/gear 16'**
- **Dyna Torque Radial Duals** 20.8 x 38
- **Set of front fenders for Magnum 7120**
- **Set 750-16 6 bolt IHC Rims**
- **Set 1000-16 8 bolt IHC Rims**
- **Ferris IS 2000 Zero Turn Mower** 61" Deck 30HP Vanguard Big Block motor, 281 Hrs

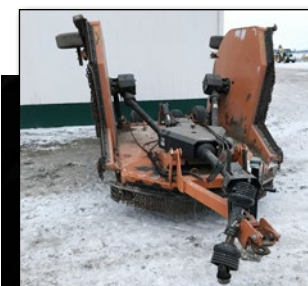
SMALL WAGON LOAD OF FARM PARTS & MISC SELLS FIRST AT 10:30 AM.

Can't Make it To the Auction?
Bid Conveniently Online At:



For Online Bidding Questions
Contact Nathan Whitney (740) 505-0482

INSPECTION DATE:
Saturday, Feb. 1st • 9am-Noon



Terms: Cash or Check with Photo ID. Everything sells "AS IS" Loader Tractor available sale day. Lunch/ Restroom

Owner: Sutorius Farms LLC
Equipment Questions: Call Brian Sutorius 419-271-5386
Auction Manager: Kevin Wendt CAI 419-566-1599



614.626.SOLD | www.thewendtgroup.com