

FRIDAY, JANUARY 17, 2020 • 10:30AM



Tractors • Skidloader • Tillage & Planting
Harvest Equipment • Forage & Silage Equipment • Hay Equipment
Truck, Semis & Trailers • Rotary Mower • Attachments • Tools

13624 Federal Road, Orient, Ohio

EQUIPMENT AUCTION

Shannon Farm



Shannon Farm
EQUIPMENT AUCTION
Orient, Ohio
FRI., JAN. 17. • 10:30AM



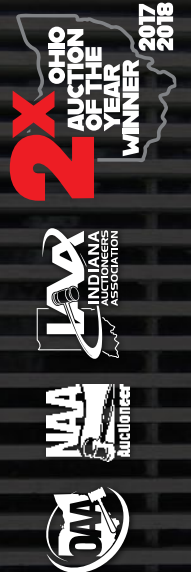
Shannon Farm
EQUIPMENT AUCTION



13624 Federal Road, Orient, Ohio

THE WENDT GROUP
Land & Agricultural Asset Auctions

121 Jackson St., Plain City, OH 43064
Kevin Wendt, CAI - President / Auctioneer / Broker
419.566.1599 | kevin@thewendtgroup.com
Dale Evans - General Manager / Auctioneer
260.894.0458 | dale@thewendtgroup.com
Nick Cummings, CAI - Auctioneer / Auction Advisor
740.572.0756 | nick@thewendtgroup.com



614.626.SOLD
www.thewendtgroup.com



FRI., JAN. 17. • 10:30AM

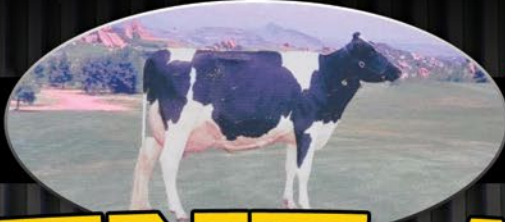
THE WENDT GROUP
Land & Agricultural Asset Auctions

614.626.SOLD
www.thewendtgroup.com

614.626.SOLD
www.thewendtgroup.com

THE WENDT GROUP
Land & Agricultural Asset Auctions

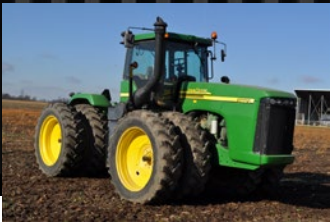
Shannon Farm



EQUIPMENT AUCTION

13624 Federal Road, Orient, Ohio

FRIDAY, JANUARY 17, 2020 • 10:30AM



AUCTION LOCATION: 13624 FEDERAL RD, ORIENT, OHIO 43146
DIRECTIONS: From Mt. Sterling, Ohio. Take SR 62 Northeast 1 mile to Scioto Darby Rd. Turn right on Scioto Darby Rd. and travel 1.8 miles to Five Points Pike. Turn right on Five Points Pike and travel .2 miles to Federal Rd. Turn left on Federal Rd. to the auction site.

TRACTORS, SKIDLOADER

- **Case IH Magnum 370 tractor**, MFWD, CVT, 5 hyd remotes, 1000 pto, 3 pt, quick hitch, cab suspension, front axle suspension, Pro 700 display, 372 receiver, 480/80 R 50 duals, 380/80 R 38 front duals, 2047 hrs, SN ZDRD09120
- **Case IH Magnum 225 tractor**, MFWD, 480/80 R 46 duals, 380/85 R 34 front, CVT, 4 hyd remotes, 540/1000 pto, 3 pt, Pro 700 display, 372 receiver, WASS, front wts, 2468 hrs, SN ZBRH05909
- **Case IH 7120 MFWD tractor**, 480/80 R 42 duals, 480/65 R 28 front, 3 hyd remotes, 540/1000 pto, 3 pt, 18 spd PS, 11,630 hrs, JJA0032756
- **John Deere 9220 tractor**, 4WD, 480/80 R 46 tires, 4 hyd remotes, 1000 pto, 3 pt, front & rear wts, Greenstar Ready, power shift, 7132 hrs, SN 021610
- **John Deere 8300 tractor**, MFWD, 480/80 R 46 duals, 380/85 R 34 front, fenders, front wts, 4 hyd remotes, 1000 pto, 3 pt, 10252 hrs, SN 025129
- **Bobcat S130 skidloader**, hand & foot controls, Kubota diesel, 11,362 hrs, SN A3KY35951
- **Skidloader buckets** • **Skidloader mount sand rake**
- **Skidloader manure scraper**

TILLAGE & PLANTING

- **DMI 527B disc chisel**, front hyd adjust blade depth, rear disc leveler
- **DMI 1300 Ecolo-Champ 11-shank disc chisel**, hyd adjust front disc, 6 front twisted shovels, 5 rear parabolic shanks
- **33' Case IH Turbo 333 True-Tandem vertical till**, rear basket, SN JFH0047875
- **24' Great Plains Solid Stand 2410NT drill**, no-till coulters, seed loc wheel, single rubber press wheel, (4) seed flow monitors, SN GP-C1815
- **Kinze 3600 16/31 planter**, no-till coulters, box ext, Keaton seed firmers, finger pick-up, rubber closing wheels, markers, ground drive, KPM III monitor, 10,000 acres, SN 620419
- **DMI Coulter Champ II 9-shank disc chisel**, hyd, adjust front disc, twisted shovels
- **30' John Deere 400 rotary hoe**, hyd flat fold, 3 pt, wing wheels
- **26' Kent Disc-o-vator**, front blades, sweep, 5-bar harrow, walking tandems
- **20' harrogator**, pull-type, hyd raise, manual fold
- **International 700 on-land 7-btm plow**, auto reset, SN 1050000U001564
- **Tebben 12-row cultivator**, 3 pt, hyd fold, rolling fenders, Danish tine
- **J & M 350 gravity seed wagon**, 11 R 24.5 tires, 15' poly cup auger, 3 section spout, Augermate hyd power unit, roll tarp
- **300 bushel gravity seed wagon**, 15' J & M poly cup auger, Auger Mate hyd power unit, 295/75 R 22.5 tires

HARVEST EQUIPMENT

- **Claas Lexion 740 combine**, 900/60 R 32 front, 28 L 26 rear, 4WD, Impeller wear kit, new concave, new cylinder bars, new injection pump, rear hitch, 2095 engine hrs, 1405 separator hrs, Ag Leader Versa, Quanimeter yield monitor, SN C4800546
- **Claas 512 cornhead**, hyd deck plates, knife rolls, poly, header height, guidance whiskers, SN 91801726
- **40' Claas 1200 Maxflex grain head**, full finger, double knife drive, SN 535000625
- **40' Unverferth HT36 header cart**
- **30' J & M HT8 header cart**
- **Demco 850 grain cart**, scales, roll tarp, 1000 pto, 30.5 L 32 tires, hyd spout, lights, camera
- **(2) Mayrath 10" x 70' swing-a-way augers**, 540 pto
- **8" x 61' Mayrath swing-a-way auger**, hyd auger mover
- **(2) EZ-Trail gravity bed wagons** on gear, 12.5-15SL tires

FORAGE & SILAGE EQUIPMENT

- **Claas Jaguar 970 forage harvester**, 710/70 R 38 drive tires, 600/65 R 28 rear tires, 4WD, kernel processor, less than 400 acres on NEW cutter head, 3251 hrs, Mann engine, SN 49403203
- **25' Claas Orbis 750 10-row corn head**, hyd fold, SN 65901691

- **12' Claas 380 pickup head**, SN I3502815
- **(3) Meyer 8124 silage wagons**, chain floor, 425/65 R 22.5 tires, tandem axle, hyd rear door, lights, XT2200L gear, SN 1081215 / 1081216 / 1081217
- **12' Leon 2000 silage blade**, mounts for JD 8300 & Case 225
- **12' Leon 09000 silage blade**, mounts for JD 9220, SN 26617502
- **12' Grouser AG 240 silage blade**, mount for Case IH 370 tractor
- **3 pt. tow-between tank carrier**, 500 gallon poly tank, 11L-15 rear tires

HAY EQUIPMENT

- **2014 New Holland 316 Mow Max II 16' discbine**, rubber on rubber rolls, center pivot, drawbar hitch, 1000 pto, SN YEN250410
- **H & S 12-wheel rake**, hyd fold, kickerwheel
- **Vicon Fanex 500 tedder**, 4-speed, 540 pto, manual fold, SN 21GV01
- **(2) LP80 Horst 8-bale wagons**, 5th wheel steering, SN 015043 / SN 015046
- **3 pt bale carrier** • **Bale spear** • **Bale spear, JD loader**
- **Worksaver bale squeezer**, JD loader mount

LIVESTOCK TRAILER & EQUIPMENT

- **2011 EBY Maverick 24' aluminum livestock trailer**, single sliding divider, ST 235/85 R 16 tires, poly covers, VIN 4A2LG242XB2023388
- **Pik Rite 1190 hydro-push manure spreader**, 425/65 R 22.5, tandem axle, slop gate, 1000 pto, horizontal beater, poly floor, SN 71009001
- **New Holland 355 feed grinder**, ear corn chute, folding unload auger, 540 pto, SN 753518
- **(4) 24' hay feed wagons** • Hay ring

TRUCK, SEMIS, & TRAILERS

- **2007 GMC 3500 HD chassis truck**, 9' x 7 1/2' steel flat bed, 4x4, DRW, Duramax diesel, Allison auto, gooseneck ball, regular cab, receiver hitch, 193,779 miles, VIN 1GDJK34627E557144
- **2001 International 9200i semi**, Cummins N-14, Celect Plus 10-speed trans, 170" WB, air ride, 11 R 22.5 tires, air slide 5th wheel, pto, 2 line wet kit, shows 798,436 miles, VIN 2HSCAR81C092679
- **1996 Kenworth T800 semi**, 3176 CAT, 10 spd, 295/75 R 22.5 tires, 10 alum wheels, 8 bag air ride, pto, single line wet kit, 190 WB, shows 99,600 miles, VIN 1XKDD9X2TS684873
- **2007 MAC 34' aluminum dump trailer**, has damage from rollover, 11 R 24.5 tires, coal door, spring ride, alum wheels, salvage title, SN 5MADA33237C013372
- **1988 East 32' end dump trailer**, spring ride, 11 R 24.5 tires, Dayton rims, roll tarp, coal chute, salvage title, VIN 1E1D1P28XJKR08137
- **1972 Chevrolet C50 straight truck**, V8 gas 350 engine, 5+2, hyd brakes, 8.25-20 tires, 15' bed w/ plywood floor, single cylinder hoist, VIN CCE532V142495
- **15' x 77" skidloader trailer**, tri axle, pintle hitch, 7-14.5 tires, NO title
- **16' tandem axle trailer w/ 1000 gallon fuel tank**, 110 volt fuel pump, Mi-T-M air compressor/generator, air hose reel, VIN plate missing
- **4' x 7' single axle utility trailer**, NO title

ROTARY MOWER, MISC. ATTACHMENTS, MISC. SHOP TOOLS

- **15' Woods BW180X batwing rotary mower**, stump jumpers, 1000 pto, hyd fold, airplane tires
- **Kleen Blue 55 gallon DEF transfer system**
- **Kleen Blue 265 gal tote pump** with hose & automatic nozzle
- **Winco 30 kw pto generator** on small trailer
- **Goodwin GTP-100HX 4" solids trash pump**, Honda gas engine
- **(10) 50' rolls of lay flat 4" hose** with Camlock fittings
- **Lincoln power MIG 200 wire welder**
- **Euro to JD adapter**
- **48" pallet forks**, JD loader
- **3 pt weight rack** for IH suitcase wts
- **Tool boxes**
- **Shop hand tools**
- **(2) 42" floor fans**
- **Lincoln power grease gun**
- **Shop press**
- **Air-over hyd floor jack**
- **Jack stands**
- **Misc. spare implement tires & rims**
- **Misc. shop supplies**

OWNER: Dave Shannon

For Equipment Questions, Call:
 Dave Shannon – 614-679-1307

Can't Make it To the Auction?
 Bid Conveniently Online At:



For Online Bidding Questions
 Contact Nathan Whitney (740) 505-0482

Auction Manager: Nick Cummings, CAI 740-572-0756



614.626.SOLD
www.thewendtgroup.com

INSPECTION DATE:
 Sat, Jan. 11th • 9am - Noon