

AUCTION DIRECTIONS

From Sunbury, OH Take State Route 36 east 4 miles to Meredith State Road. Take a slight right turn on Meredith State Road and travel 1.7 miles to North County Line Road. Turn right onto North County Line Road and travel 1 mile to Foundation Road. Turn left on Foundation Road and travel to the auction site.

From Johnstown, OH Take State Route 37 west 3 miles to Clover Valley Road. Turn right (north) on Clover Valley Road and travel 5 miles to Foundation Road. Turn left onto Foundation Road and travel approximately 2 miles to auction site.



121 Jackson Street, Plain City, OH 43064

CLEVER FARMS AUCTION

FRI, DEC. 3RD, 2021 • 10:30AM



Kevin Wendt, CAI - President / Auctioneer / Broker
419.566.1599 | kevin@thewendtgroup.com

Dale Evans - General Manager / Auctioneer
260.894.0458 | dale@thewendtgroup.com

Nick Cummings, CAI - Auctioneer / Auction Advisor
740.572.0756 | nick@thewendtgroup.com



614.626.SOLD
WWW.THEWENDTGROUP.COM

CLEVER FARMS EQUIPMENT AUCTION
FRIDAY DECEMBER 3RD, 2021 • 10:30AM



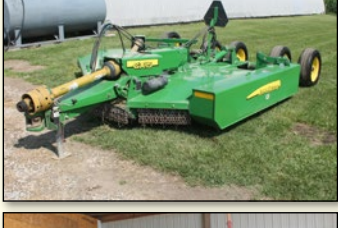
13676 Foundation Rd. Croton, Ohio 43013



614.626.SOLD
www.thewendtgroup.com

**CLEVER
FARMS**

EQUIPMENT AUCTION

FRIDAY, DECEMBER 3RD 10:30AM**13676 Foundation Rd.
Croton, Ohio 43013****AUCTION DIRECTIONS**

From Sunbury, OH Take State Route 36 east 4 miles to Meredith State Road. Take a slight right turn on Meredith State Road and travel 1.7 miles to North County Line Road. Turn right onto North County Line Road and travel 1 mile to Foundation Road. Turn left on Foundation Road and travel to the auction site.

From Johnstown, OH Take State Route 37 west 3 miles to Clover Valley Road. Turn right (north) on Clover Valley Road and travel 5 miles to Foundation Road. Turn left onto Foundation Road and travel approximately 2 miles to auction site.

AUCTIONEER'S NOTE: After three generations in a successful seed production business, Jim & Carol have decided to retire from their seed and farming operation. This equipment has been properly maintained and is in good working order. Please bring your trailer. Loading available auction day.

TRACTORS

John Deere 8230 tractor, MFWD, 480 / 80 R 50 tires & duals, rear wts, 420 / 85 R 34 front tires & duals, 3 pt, 1000 pto, 4 hyd remotes, front wts, 5104 hrs, SN RW8230P017710

John Deere 7730 tractor, MFWD, 18.4 R 42 tires & duals, 380 / 85 R 34, front tires, 3 pt, 540 pto, 3 hyd remotes, front wts, 2786 hrs, SN RW7730D008062

John Deere 7200 R tractor, MFWD, 380 / 90 R 50 tires & duals, 380 / 85 R 34 front tires, 3 pt, pto, 3 hyd remotes, 3376 hrs, SN L06415D546090

John Deere 6415 tractor, 18.4 / 34 tires, 3pt, 540 pto, 3 hyd remotes, 3,076 hrs, SN L06415D546090

John Deere 6110L tractor, MFWD, 420 / 85 R 30 tires, 320 / 85 R 24 fronts, 3 pt, 540 pto, 2 hyd remotes, sells w/ JD 640 loader w/ 7' bucket, 2120 hrs, SN L06110V236407

John Deere 3020 tractor, diesel, narrow front, 16.9-34 tires, 3 pt, 2 hyd remotes, 540 pto, shows 4768 hrs, SN T113R084943R

PLANTING & TILLAGE

15' John Deere 1590 no-till drill, elec rate controller, 7 1/2" spacing, markers, wired for monitor, SN 1N01590XCJD775169

Kinze 3600 8 row x 36" planter, single disc, 2x2 fert, in furrow Keeton fert, no-till, ground drive pump, insecticide

21' 9" John Deere 2310 mulch finisher, hyd fold, 5 bar harrow, walking tandems

18' Sunflower 1232 disc, Rock Flex, 9" spacing, rear hitch, hyd fold

Blue Jet 28% applicator, 7-knife x 36", 500 gal tank, ground drive pump

10' John Deere 950 cultimulcher

13-shank International disc chisel

2 row planter, ground drive, 3 pt

HARVEST

Case International 6130 AFS Axial-Flow combine, 900/60 R 32 drive tires, 540/ 65 R 30 rear tires, 4x4, bin ext, specialty rotor, 2246 eng hrs, 1558 rotor hrs, SN YCG009032

Case International 3406 6x36" row corn head, poly, knife rolls, single point hook up, SN Y9S019275

26' EZ Trail 680 header cart, 20.5 x 3.0-10 tires

35' Case International 2162 draper head, single point hook up, fore & aft reel, SN YCZN17893

36' J & M header cart, lights, ST 225/75 D 15 tires

Killbros 1160 grain cart, corner auger, 24.5-32 tires, lights, scales, 1000 pto, roll tarp

10" x 62' GSI grain auger, hyd raise, top drive 540 pto

10" x 62' Hutchinson grain auger, hyd raise, top drive, 540 pto

10" x 31' Hutchinson unload auger, manual raise w/ electric single phase motor

8" x 50' grain auger, top drive 540 pto, manual lift

Unverferth 2750 Seed Runner seed cart w/ belt conveyor, tandem axle, double hopper, Digi-Star scale, Honda CX 390 power unit, SN D61920109

Killbros 350 gravity bed wagon

(4) 275 bushel Unverferth gravity bed wagon, 12.5 L 15 tires

Killbros 500 bushel gravity bed wagon, dble door/dble compartment, 10.00-20 tires

(3) 300 bushel gravity bed wagon, 12.5 L 15 tires

(3) Unverferth GB 325 gravity bed wagon, 16.5 L 16 tires

TRUCKS

1981 International S1700 grain truck w/ 15 1/2' bed & hoist, 9.00-20 tires, 5 speed hi-lo, gas engine, 122,397 miles

1994 Ford F700 grain truck w/ 15 1/2' bed & hoist, 10 R 22.5 tires, 5 speed hi-lo, gas engine, 100,088 miles

2002 Ford F750 XL Super Duty grain truck w/ 16' bed & hoist, aluminum, 11 R 22.5 tires, 6 speed, roll tarp, CAT diesel engine, 184,245 miles

2004 Freightliner single axle grain truck, new motor, 252,600 miles, automatic transmission, 16ft. aluminum bed & hoist, roll tarp, VIN 1FVACX-DC74HN25142

2012 Ford F350 XLT Super Duty truck, Power Struck, dually, automatic, diesel, 120,388 miles

2017 Mortz 20 + 5 gooseneck trailer, 8' wide, FH series, tandem axle, single wheel, 3 ramps, dble jack, SN 4WXGF332XH1031025

MISC. SEED EQUIPMENT

Hagie 470 De-tassler/cutter, 4x4, hyd, Ford engine

Hagie 472 Tassel puller, 4x4, hyd, Ford engine

Approx. 150 units 616 C conventional seed corn, 110-day variety

Union special sewing machine for seed bags

Pallet scales

Brock 500 bushel seed/feed bin

FORK LIFT, ROTARY MOWERS

Yale fork lift, solid tire, side shift, propane, 5053 hrs, SN GLP050VXEUSE084

10' John Deere CX 15 rotary mower, pull-type, 540 pto, hyd fold, SN 1P0CX15GEF2046361

9' Land Pride 45-108, grader blade, 3 pt

TANKS, DYKE, MISC. SHOP ITEMS

1000 gallon fuel tank

200 gal square portable fuel tank

12,000 gal flat btm poly tank

10,000 gal flat btm poly tank

1,500 gal cone btm poly tank

1,200 gal cone btm poly tank

6000 gal fuel tank w/ pump

L-shaped fuel tank

24' x 50' steel dyke w/ plastic liner

250 cone grass seeder, 3 pt, 540 pto

Power cords

(3) Nipco heaters

Master 300,000 BTU heater

Shop press • Power hack saw • Lincoln welder

Pipe threader • Blackhawk drill press • Harris torch set w/ tanks

(6) John Deere round wts • (6) 20' x 18" N-12 tile • Misc. tile • 7,000 watt gas powered generator • (12) John Deere front suitcase weights

BID ONLINE WITH BidSpotter.com

For Online Bidding Questions,
Call: Nathan Whitney 740-505-0482

**OWNERS: CLEVER FARMS, INC.
JAMES & CAROL CLEVER 740-817-0409**

**All Hours
& Mileage
Prior to
Harvest**



THE WENDT GROUP
Land & Agricultural Assets

TERMS: Cash or Check w/ photo ID. Credit Card accepted w/4% Convenience fee. All items sold "AS IS". Bring your trailer, loading available auction day.

**EQUIPMENT INSPECTION:
Sat., Nov. 27th, 9 AM-12 NOON**

614.626.SOLD • www.thewendtgroup.com

AUCTION MANAGER: NICK CUMMINGS, CAI (740) 572-0756