



EQUIPMENT INSPECTION:
Sat, Sept. 4, 9 AM-12 NOON

THURSDAY, SEPT. 9 • 10:30AM^{EST}

DELK FARM EQUIPMENT AUCTION
Held at 4474 Shields Rd, Arcanum, OH 45304



GET AUCTION INFO BY TEXT!
TEXT AUCTION
TO 614-636-4191

Kevin Wendt, CAI - President / Auctioneer / Broker
419.566.1599 | kevin@thewendtgroup.com
Dale Evans - General Manager / Auctioneer
260.894.0458 | dale@thewendtgroup.com
Nick Cummings, CAI - Auctioneer / Auction Advisor
740.572.0756 | nick@thewendtgroup.com

614.626.SOLD
WWW.THEWENDTGROUP.COM

Held at 4474 Shields Rd, Arcanum, OH 45304

EQUIPMENT INSPECTION:
Sat, Sept. 4, 9 AM-12 NOON

DELK FARM EQUIPMENT AUCTION
THURSDAY, SEPT. 9 • 10:30AM^{EST}

121 Jackson Street, Plain City, OH 43064

DELK FARM EQUIPMENT AUCTION

THURSDAY, SEPT. 9 • 10:30AM^{EST}

Held at 4474 Shields Road, Arcanum, OH 45304



EQUIPMENT INSPECTION:
Sat., Sept. 4, 9 AM-12 NOON

- 36± MILES NW OF DAYTON, OH
- 27± MILES NE OF RICHMOND, IN
- 22± MILES W OF PIQUA, OH
- 6± MILES SE OF GREENVILLE, OH



DELK FARM EQUIPMENT

AUCTION

Held at 4474 Shields Rd.
Arcanum, OH 45304

THURSDAY, SEPT. 9 • 10:30AM EST



AUCTION LOCATION: 4474 Shields Road, Arcanum, OH 45304

AUCTION DIRECTIONS: From I-70 and St. Rte. 49 – Take St. Rte. 49 north 17 miles to Shields Rd. Turn right (north) on Shields Rd. Travel 1.2 miles to auction site.

AUCTIONEER'S NOTE: After many successful years of farming, Mr. Delk has rented his farm and is offering an outstanding line of immaculate farm equipment that has always been shedded and properly maintained. Loading will be available auction day. Bring your trailer.

SALE ORDER: 30-45 minutes of small items, tillage, planting, tractors, combine, harvest equipment, trucks, miscellaneous, remainder of small items

TRACTORS

JOHN DEERE 8100 TRACTOR, 18.4 R 42 duals, 380/85 R 30 tires, MFWD, powershift, 3 hyd remotes, 3 pt, 1000 pto, front fenders, buddy seat, autosteer ready, 3936 hrs, SN RW8100P020271

JOHN DEERE 7720 TRACTOR, 480 / 80 R 42 rear, 14 L-16.1 tires, 3 hyd remotes, 3 pt, quick hitch, 540/1000 pto, GreenStar Ready, 20 spd PowrQuad Plus trans, C/H/A, auto steer ready, shows 2311 hrs, SN RW7720R048707

JOHN DEERE 2030 TRACTOR, 13.6-38 rear, 7.5-16 front, front wts, 2 hyd remotes, 3 pt, quick hitch, 540 pto, diesel, 8 speed, 2852 original hrs, SN 200790T

TILLAGE & PLANTING, SPRAYER

27 1/2' CASE IH 4300 FIELD CULTIVATOR, hyd fold, 5 bar spike tooth harrow, rear hitch, walking tandems, lights, SN JFH0018591

JOHN DEERE 2800 5 BTM PLOW, semi-mounted, spring reset, SN 015741A

9 SHANK INTERNATIONAL 60 CONSER-TILL DISC CHISEL, front straight blades, leveler

JOHN DEERE 1780 PLANTER, 11 row x 15", 3 bushel boxes, vac meters, pneumatic down pressure, ground drive, markers, 16.5-16.1 tires, lights, Keeton seed firmers, cast closing wheels, Computrac 250, SN 1A01780RPEA755235

JOHN DEERE 1760NT PLANTER, 8 row x 30", hyd front fold, finger pickup, on row boxes, no-till coulters, floating Yetter row cleaners, Shaffert seed firmers, rubber closing wheels, drag chains, spring down force, ground drive, (2) 150 gal poly tanks, ground driven John Blue piston pump, 2x2 John Deere single disc openers, markers, Computrac 250 w/ radar, SN A01760N700111

60' CENTURY SPRAY BOOM, 3 pt, 20" spacing, 3 electric sections, hyd fold, Micro track, Spray Mate II controller

TOP AIR 250 GAL SADDLE TANKS W/ ACE HYD DRIVEN PUMP, mount for 7720 tractor

1600 GAL SHUTTLE TRAILER, 1600 gal poly tank, tandem axle, 22.5 tires, surge brakes, 2" Banjo poly pump

1000 GAL SHUTTLE TRAILER, 1000 gal poly tank, tandem axle, 2" Banjo poly pump, 15 gal inductor, 15" tires

HARVEST EQUIPMENT

JOHN DEERE 9400 COMBINE, 24.5-32 drive tires, 14.9-24 rear, chopper, Vittetoe hyd chaff spreader, Maurer grain bin ext, HarvesTrak, Tiger LED lights, 2689 engine hrs, 1811 separator hrs, SN H09400X665156

JOHN DEERE 693 CORN HEAD, 6 row x 30", fluted rolls, poly, hyd drive fluff auger, Calmer stalk rollers, SN H00693X671306

18' JOHN DEERE 918 GRAIN HEAD, hyd fore/aft, row crop dividers, poly skid shoes, SN H00918F670831

25' J & M HEADER TRANSPORT TRAILER, 205 / 75 R 14 tires

UNVERFERHT HT 25 HEADER CART, 20.5x6-10 tires

(2) UNVERFERHT 530 GRAVITY BED WAGONS, 425/65 R 22.5 tires, hyd surge brakes, lights, roll tarps, sight windows, SN B18580160 / B18580141

J & M 525 GRAVITY WAGON, 425 / 65 R 22.5 tires, hyd surge, brakes, sight windows, lights

250 BU GRAVITY SEED WAGON, 15' J & M poly cup auger, electric shut off, Auger Mate power unit, John Deere 1065 gear

GRAIN TRUCKS

1987 INTERNATIONAL S1700 GRAIN TRUCK, 466 diesel, 5 + 2 trans, single axle, 205"WB, spring ride, 10.00 R 20 tires, rear bumper hitch, PTO, 16' grain bed, wood sides & floor, twin hoist, roll tarp, grain chute, hyd brakes, 308,911 miles, VIN 1HTLCCFP9HH477052

1979 FORD 900 GRAIN TRUCK, Ford Big Block V-8 gas, 2 stick, H/L/D + 5 spd, tandem axle, 225"WB Hendrick walking beam, 11 R 22.5 tires, rear bumper hitch, 20' Omaha standard grain bed, wood floor, grain chute, roll tarp, barn doors, air brake, shows 84,830 miles, VIN S91KVFE6187

1975 FORD 8000 GRAIN TRUCK, 3208 CAT diesel, 2 stick H/L/D/OD + 5 spd, tandem axle, steerable air ride, 3rd axle, Hendrick walking beam, 11 R 22.5 tires, 225/70 R 22.5 lift axle tires, rear bumper hitch, PTO, air brake, 16' steel dump bed, steel floor, coal chute, tailgate, shows 67,634 miles, VIN U80CVV68107



GRAIN BIN, GPS, ATU, MISC. EQUIPMENT

15' X 15' H MARTIN / SILVER SHIELD GRAIN BIN, 6" unload, 12" fan w/ air tube, concrete floor, flat roof

(2) JOHN DEERE ATU 200 STEERING CONTROLLERS STARFIRE 3000 GLOBE W/ 450 RTK RADIO, PCGT3TB792300

JOHN DEERE 2630 DISPLAY, RTK unlock, PCGU2UF507028

MISC. TRIMBLE wiring harnesses to fit JD 8100 & 7720 tractors

265 GALLON SHUTTLE W/ SOTERA 12-VOLT PUMP, hose & meter

JOHN DEERE 709 ROTARY MOWER, pull type, hyd lift, 2 tail wheels, 540 pto, stump jumper

(2) 205 JOHN DEERE WHEELS WEIGHTS

PALLETS OF PAVER BLOCK

7' SNOW BLOWER, 3 pt, 540 pto, hyd swing discharge chute

100 GAL STEEL FUEL TRANSFER TANK, 12 volt pump
3 PT SPRAYER, POLY TANK, 27' boom, 20" spacing, no pump

NEW IDEA MANURE SPREADER, 540 pto, 11' bed, triple beater

16' FLAT RACK WAGON, on Killbros 1386 gear

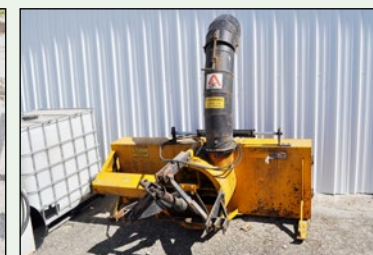
(2) 300 GAL fuel tanks

DICKEY JOHN mini GAC plus hand held moisture tester

MILLER MADIC 172 wire welder

SET OF 18.4-42 Goodyear tires

SET OF 16.9-34 clamp on duals



BID ONLINE WITH **BidSpotter.com**

For Online Bidding Questions,
Call: Nathan Whitney 740-505-0482

OWNERS: DAVID & BEVERLY DELK
AUCTION MANAGER: NICK CUMMINGS, CAI (740)572-0756
FOR EQUIPMENT QUESTIONS: KEIR SMITH (937) 467-2661
SEE OUR WEBSITE FOR FULL LISTING, PHOTOS, & INFORMATION

TERMS: Cash or Check w/ photo ID. Credit Card accepted w/4% Convenience fee. All items sold "AS IS". Bring your trailer, loading available auction day.

THE WENDT GROUP
Land & Agricultural Assets

614.626.SOLD • WWW.THEWENDTGROUP.COM



EQUIPMENT INSPECTION:
Sat., Sept. 4, 9 AM-12 NOON