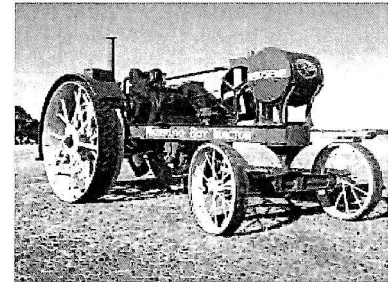
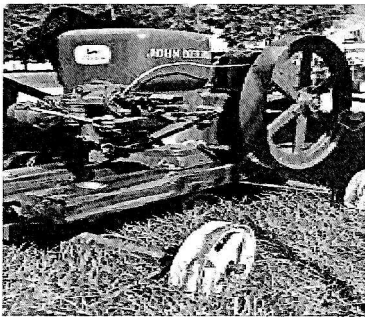
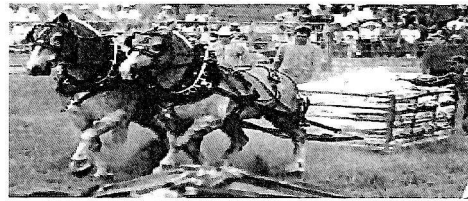
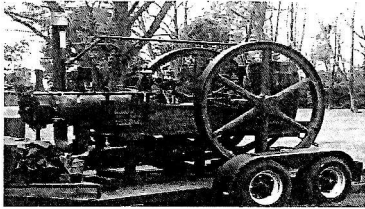


Johnson County Antique Machinery Association

31 st Annual Show

June 16, 17, 18, 19 - 2022

Johnson County Park, Near Edinburgh, Indiana
(Just north of Camp Atterbury)



Featuring Anything John Deere Related
John Deere Tractors, Equipment and Gas engines, John Deere Garden Tractors and All Brands of Oil Field Engines and Muscle Tractors, Antique Trucks and Cars
All brands of Equipment welcome

All Weekend Planned Events:

Featured Tractors and Equipment
Entertainment, Kids Games,
Women's Tent, Flea Market, Food
Vendors, Tractor Games, Old Cars and
Trucks

Thursday Evening - 7:00 pm

Farm Tractor Pulls

Friday - 6:00 pm

Antique Tractor Pulls

Saturday

Consignment Sale 9:00 am,

Tractor Parade 3:30 pm

Saturday 7:00 pm

Heavyweight Horse Pulls

Sunday Morning / Church Service

Sunday limited activities

Visit our website at

www.jcamach.org or find
us on our Facebook page :

**Johnson County Antique
Machinery**

Contact Information:

Dwayne Hansford- (317)-512-0493

(General Information)

Jamie Smith- (317) 417-2566

(Vendors)

Bob Naylor- (812)-876-2072

Evenings

(Camping at Show)

Daily Demos include:

Threshing, Baker Fan, Rock Crushing,
Horse Powered Equipment, Corn
Shelling, Sawmill, Corn Shucking,
Working Machinery Field, Gas
Engines, Steam Engines, Blacksmith
Demo's

Must be a member to show, exhibit, &
pull.

\$10 family membership annually.

\$3 Daily Admission, \$5 Weekend
Pass.

All golf carts must be registered with
proof of insurance

Camping onsite, electricity is limited

7th Annual

Farm Tractor Pull

at the Johnson County Antique Machinery Association Annual Show

Thursday, June 16th, 2022 - 7pm



Out of Field

Non-Turbo Out of Field / 3000 RPM

- *Tire size 18.48x38 max
- 10,000 lb - 6 mph
- 12,000 lb - 6 mph

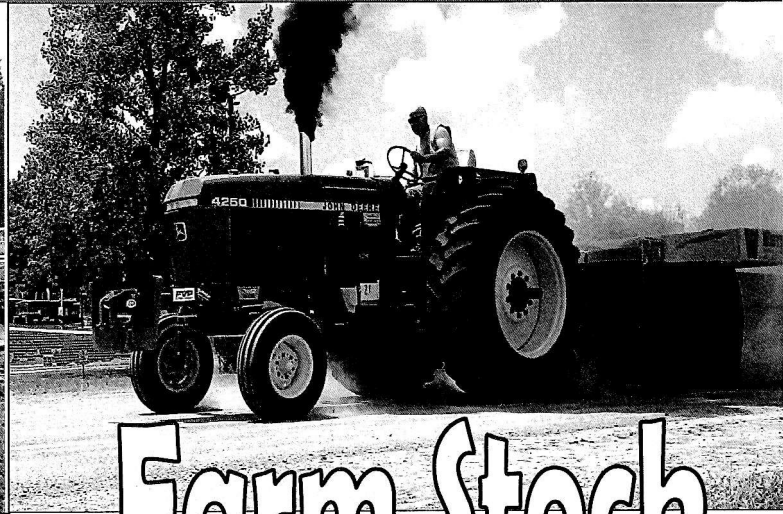
Turbo Out of Field / 3000 RPM

- *Tire size 18.4x38 max
- 9000 lb - 6 mph
- 10,000 lb - 6 mph
- *Tire size 20.8x38 or 18.4x42 max
- 12,000 lb - 8 mph
- 14,000 lb - 8 mph

Top 3 Out of Field Places in each class split a **\$250 Prize**

Contact Info:

Dwayne Hansford: 317.512.0493 Steve Warthan: 812.585.2299
Brad Smith: 317.883.5618 Brad Spann: 812.350.5247



Farm Stock

Farm Stock / 3000 RPM

- *Tire size 30.5x32 max
- 12,000 lb - 10 mph

Farm Stock / 3000 RPM

- *Tire size 18.4x38 max
- 10,000 lb - 10 mph

**** 50% Payback— Above classes ONLY****

*Tire size 20.8x38 or 18.4x42 max

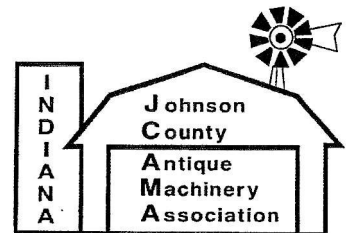
- 12,000 lb - 13 mph
- 12,000 lb - 16 mph

Top 3 Farm Stock Places in each 13 & 16 mph only class split a

\$350 Prize

*\$3 Daily Admission for Adults
12 & under FREE!*

**Weigh in begins
at approx 5pm.**



Held at the Johnson County Park

(just North of Camp Atterbury & West of Edinburgh)

For a rules & updated info visit: www.jcamach.org or find us on Facebook

