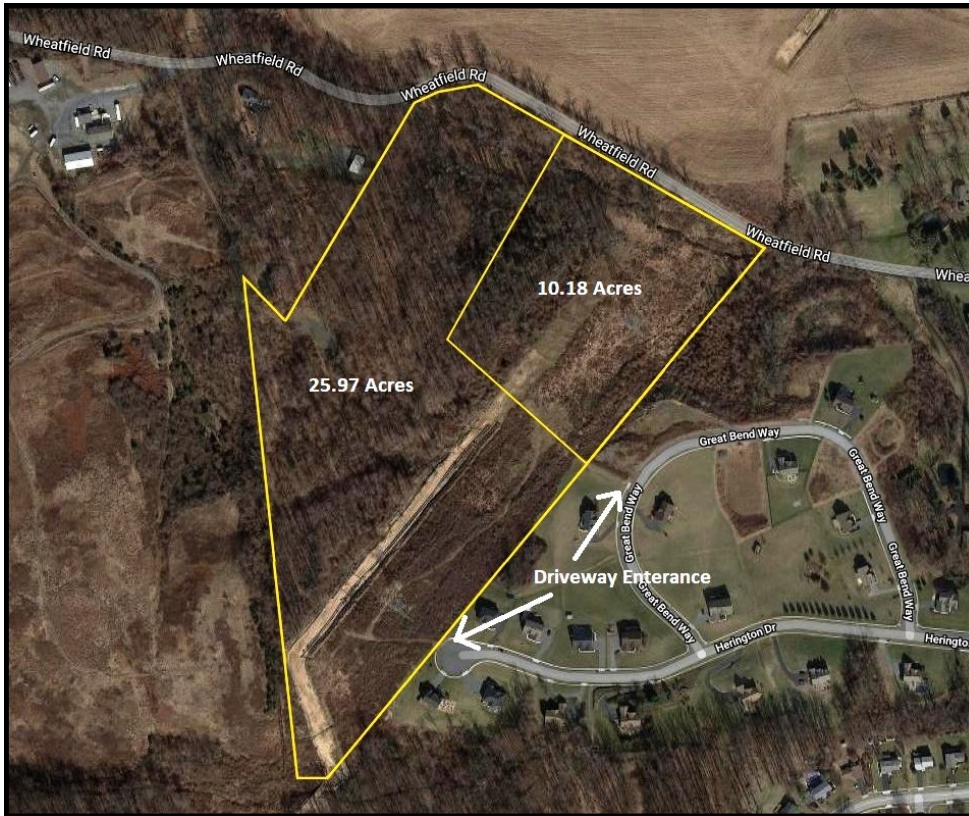


PUBLIC AUCTION

2 PRIME BUILDING LOTS: 25.97 ACRES & 10.18 ACRES

MOHNTON/ SINKING SPRING AREA

FRIDAY, NOVEMBER 23, 2018 @ 4 PM



LOCATION: 226 Wheatfield Rd., Reading, PA 19608. From Reading take 222 S. to Mohnton Exit. Right on Grings Hill Rd. for 0.4 miles, Left on Wheatfield Rd. for 0.7 miles to property on left.

REAL ESTATE: 2 elevated building lots in Spring township, Berks county. 25.97 acres (mostly wooded) and 10.18 acres (partially wooded). Both lots have passing septic system percs. Lots have frontage on Wheatfield Rd., and driveway access from a low traffic, cul-de-sac road. Great deer hunting! Building site plans available. School District: Wilson. Zoned: RC (Rural Conservation). Taxes: \$1,378 (entirety).

NOTE: Prime Berks County acreage, excellent build site or hunting property.

OPEN HOUSE: View land anytime or owner is available for showings, call for apt. at 610-286-5183.

TERMS: 10% down day of sale; settlement within 45 days of sale. Terms by: Robert J. Weller. Kling & Deibler Attorney.

Merle Eberly
Alvin Horning, C Ivan Stoltzfus CAI
Horning Farm Agency, Inc. AY002091



HorningFarmAgency.com

610-286-5183

AUCTIONEERS - REALTORS - APPRAISERS