

SNYDER COUNTY FARMLAND AUCTION

Saturday, December 14, 2024 @ 11:00 AM

2 Farms • 160+/- Acres • 3 Parcels • Prime Tillable Farmland

00 Church Rd & 00 Foxboro Rd, Selinsgrove PA 17870- Penn & Middle Creek TWP



Church Rd Farm



Foxboro Rd Farm

Directions to Church Rd Farm: From Rt 522 N turn left on Smalsh Barrick Rd then right on Church Rd. In .8 mi farm will be on both sides of road. Watch for signs!

Directions to Foxboro Rd Farm: From Rt 522 N turn left on Smalsh Barrick Rd then right on Church Rd. In 1.4 mi slight right on Foxboro Rd. In 1.2 mi turn left. Farm will be on the right. Watch for signs!

34 +/- Acres mostly prime tillable land with road frontage on Church Rd. Part of Parcel ID: 11-06-15 (Church Rd Farm)

30 +/- Acres mostly prime tillable land with frontage on Church Rd. Part of Parcel ID: 11-06-15 (Church Rd Farm)

96 +/- Acres with road frontage on Foxboro Rd. This parcel has an equipment shed along with prime tillable land & some woodland. Parcel IDs: 13-02-004A & 13-02-110

These parcels are in a prime agricultural area of Snyder County & have lots of potential! Located close to Selinsgrove! Parcels will be offered individually on auction day.

Open House Dates:

Saturday November 30 from 10:00 AM-12:00 Noon

Tuesday December 3 from 1:00 PM-3:00 PM

Terms: \$60,000 deposit for 96 acres & \$25,000 deposit each for 30 & 34-acre tracts. Buyer pays 2% transfer tax. Settlement by February 21, 2025 or before.

Annual Taxes on 34+/- Acres: \$884 (not enrolled in Clean & Green)

Annual Taxes on 30+/- Acres: \$780 (not enrolled in Clean & Green)

Annual Taxes on 96+/- Acres: \$1983 (not enrolled in Clean & Green)

For more information contact Jake Yoder @ 717-513-5386 or Matt Bergey @ 570-412-0304.

Auctioneers Note: Auction for all 3 parcels will be held at the Church Rd Farm. GPS address is 767 Church Rd. Selinsgrove PA 17870.

BEILER-CAMPBELL
AUCTION SERVICES



www.beiler-campbellauctions.com • 888-209-6160

Auctioneers: Jake Yoder AU #005851

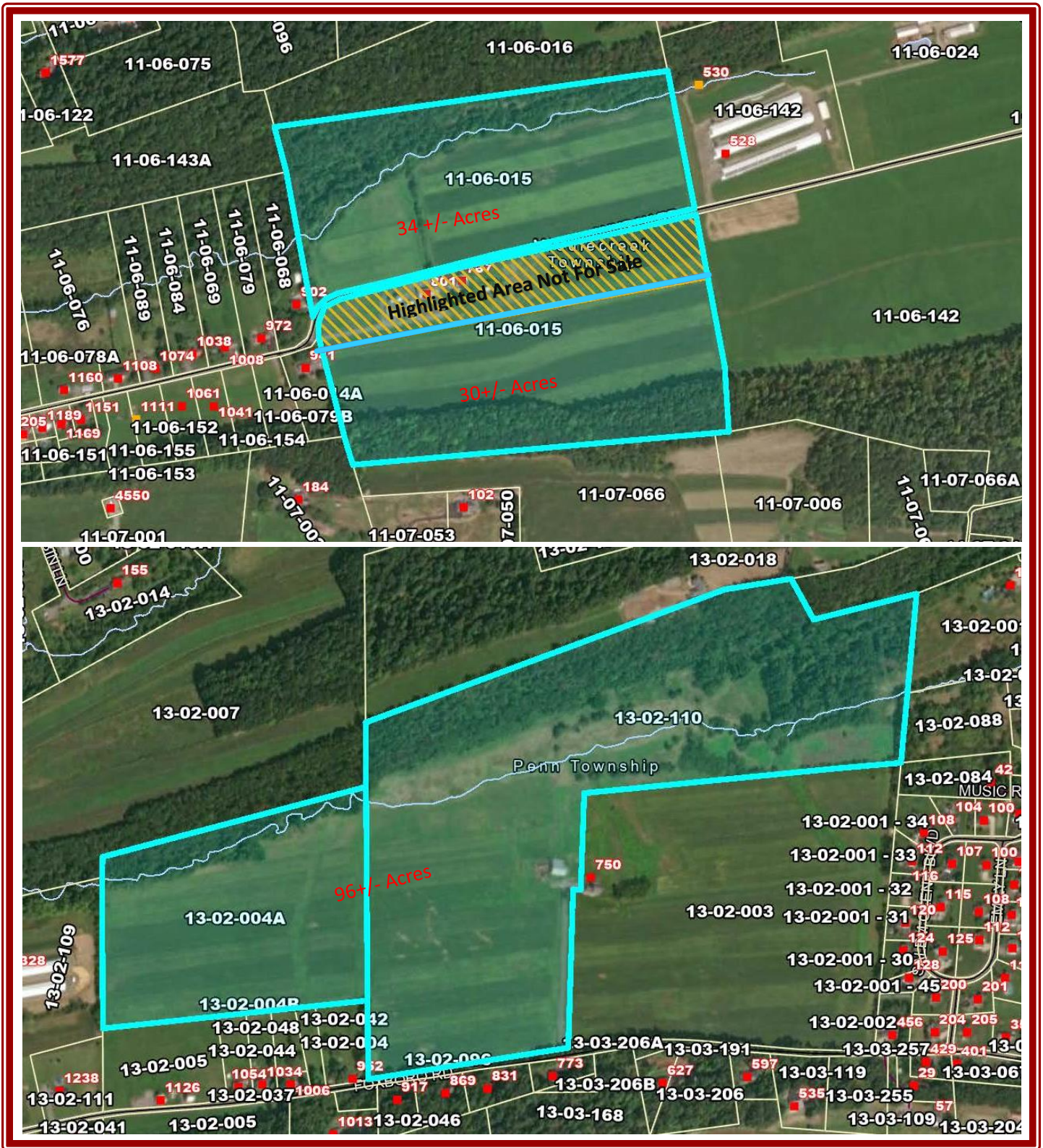
Ph. (717)-513-5386

Matt Bergey AA #019473

Ph. (570)-412-0304

Sellers: BJ&E Realty Co. LP





Aerials are deemed to be accurate but not guaranteed. These aerials are not surveys.

For more information, pictures and forms go to: www.beiler-campbellauctions.com or www.auctionzip.com or www.GoToAuction.com

Or scan the QR code in the bottom right corner.

BEILER-CAMPBELL
AUCTION SERVICES
www.beiler-campbellauctions.com • 888-209-6160



Auctioneers: Jake Yoder AU #005851
 Ph. (717)-513-5386
 Matt Bergey AA #019473
 Ph. (570)-412-0304
Sellers: BJ&E Realty Co. LP

