

Public Auction

Stauffer Compressor N Machine

Trucks • Lathes • Mills • Welders • Hand & Power Tools

New & Used Air Compressor Pumps, Motors & Parts

Thursday, Nov. 21, @ 8:30 AM

49 Pleasant Valley Road, Ephrata, PA 17522 – Lancaster Co.



Directions: From Route 222, West on Route 322, to left onto Pleasant Valley Road to auction on right.

Truck, Van, Trailer, Scissor & Forklifts: '00 Dodge Ram 2500 w/ Knapheide service body & alum ladder rack 177K miles; Ford '08 cargo van w/ ladder rack 147K miles; '90 Toyota pickup w/ topper 134K miles; '80 Knowles 8000 LBS 12 ft tandam axle trailer; JLG CM-2046 Commander Sizzor lift; walk behind lift; Datsun 3000 LBS forklift (transmission issues);

Shop Equipment: Victor 2460 Lathe gear drive (**very nice**); LeBlond Regal Lathe; Gorton Mastermil I-22 vertical milling machine; Scotchman 4014 iron worker w/ 14" blade, punch & angle shear; Jet JRD-700 & Walker-Turner radial drill presses; Parma Mfg vertical bandsaw; Lapmaster 15 lapping machine; Doall G-1 surface grinder w/ magnet; Zero D-600-F sand blast cabinet w/ dust collector; Miller XMT 304 CC/CV mig welder w/ S-22A wire feeder (**nice**); MillerMatic 35S welder; Miller spool gun & tig attachments; Metco 4RC & ThermoSpray 5P-II wire spray welders; Stody Tiger torch kit; Ram & Metco coat guns; Metco wires; Thermal Arc Pak 5XR plasma cutter; cutting, heating, brazing torch heads; Large hyd shop press; approx 50 gal hyd tank w/ motor & pump; Ridgid 802 pipe threader; (2) parts washers; Gates PC 707 hose crimper; Hossfeld bender w/ lots dies; hyd lift, & other HD shop carts, port-a-powers, pipe benders, bottle & floor jacks; pedestal grinders; vertical belt sander; Jet arbor press; large & small HD welding tables; Milwaukee, Makita, Dewalt & Ryobi power tools; pneumatic drills, saws, shears, wrenches & impacts; stands & rollers; sheet clamp; lathe plate, large 3 & 4 jaw chucks & steady rests; several large shop & machinist vises, rotary tables, compound slide table, mounting blocks, clamps, tool holders, tapping heads, cutting & adj boring bar, keyway broaches, collets, drills, end mills, reamers, taps, countersinks, adapters many other tooling items; numerous tool boxes, cabinets & storage bins; Milwaukee packouts; Blue-Point gasket punch set & slip joint pliers; Snap-On tools include combination puller set, torque multipliers, ratchets, carb wrench set, rethreading, AC kit & tap & die sets; Matco snap ring plier; Greenlee knockout sets; puller sets; screw extractors; flaring kits & tubing benders; Brown & Sharpe 51" & Mitutoyo 24" calipers; several Mitutoyo & other OD, ID & height micrometer sets; Brown & Sharp Digit-Cal II; many misc hand tools like locking & C clamps, steel & alum pipe wrenches to 48", open end, adj & Allen wrenches, ratchets, deep, reg, SAE & metric sockets up to 1", pry bars, sq's, grease guns, levels, bolt & tubing cutters, chisels, hammers, sledges & mallets; Remington shot nailer; electrical & hyd testers & meters; easy outs; hole saws; feeler, thread & pitch gauges; 4-pc set equipment skates; oilers & cans; bolt bin; misc steel flat, angle, channel, tube, plate, shaft & pipe inventory; alum air tubes; misc structural alum; (2) 10' & other step ladders; creepers; lots misc fasteners like concrete anchors, strut nuts, bolts & nuts; brass, poly & blk pipe fittings & mountings;

New & Used Compressor Parts & Inventory: IR 7.5 HP screw compressor (needs unloader repair); Lincoln 15HP motor on 80-gal tank (no pump); Jenny compressor w/ Honda engine; Aire-Sweep compressor w/ Honda engine; Curtis 10 HP compressor unit; Curtis compressor w/ 10HP motor; Campbell Hausfeld 10 HP compressor unit; WEG 15 HP

BEILER-CAMPBELL
AUCTION SERVICES



AY# 002026

www.beiler-campbellauctions.com • 888-209-6160

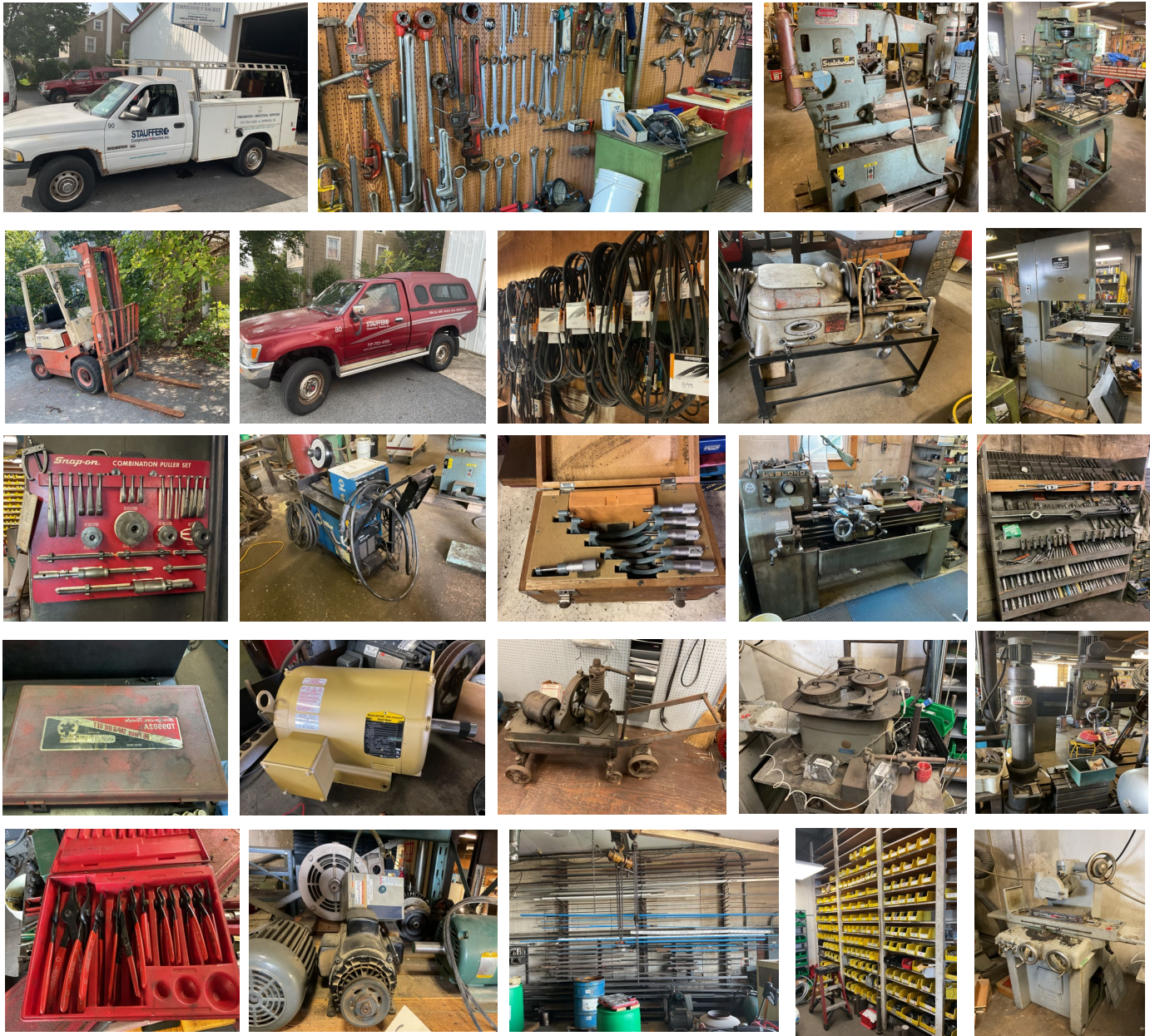
Auctioneers:

Harold Martin 717-738-4228 AA# 0019488

Christ Taylor 717-371-1915 AU# 005421

Seller: Stauffer Compressor N Machine 717-733-4128





Curtis & Challenge Air pumps; Gould Century 5 hp motor & pump; Craftsman vertical compressor; small Emglo compressor; Dayton 5 hp (rebuilt), new 7.5 HP Baldor, Weg Nema & other new & used motors; vacuum pump; air cooled after cooler; large amount new air compressor parts as pistons, bearings, Lovejoy sleeves, belts, switches, valves, gauges, mufflers, filters, housings, seals, flex pipes, wiring, fittings, quick couplers. 1-4 groove pulleys; new & used air hoses; heavy ext cords; new & used electrical boxes; brass & poly fittings; hose reels for rebuild; refrigerant & pump; several 1 & 5 gal buckets ATF, Ultrachem Chemlube 501, 751, Ultra-Tec, 32S, FSC-8000 & FSC 4000FG, Mag 1 & other fluids; parts manuals; new 1/2" hose.

Misc: new hyd liftgate power unit; Alkota hot water & other pressure washers; Toledo 500# scale; chain hoists; engine stand; misc pallet racks; new 10" x 36" shelves; new booster cable; Office & shop desks; file cabinets; refrigerator; Bunn coffee maker; water cooler; portable & window AC; shop vac; fork ext; vintage compressor w/ 1/2 HP Fidelity Electric motor & gear drive Curtis pump (rare); Champion & several other vintage compressors; lighted Hershey's ice cream sign; vintage thermometer; old tins & oil cans; misc old check records, ledgers & registers from Stauffer Machine Shop '40's; CI pot belly stove; Atlantic White Flash gas pump shade; original water pump blueprints from 1926; old rebuilt brass water pump; ceramic water bowl; vintage wooden file/storage cabinet; 4x6 metal trailer; barrel desiccant;

Auctioneers Notes: After many years in air compressor sales & service the owners are retiring and liquidating all trucks, machines shop tools & equipment, compressors, motors & parts. Many unadvertised items. Bring a friend, possibly selling simultaneously. All information believed to be accurate but not guaranteed

For more pictures go to www.beiler-campbellauctions.com or www.auctionzip.com or www.gotoauction.com