

12+/- Acres

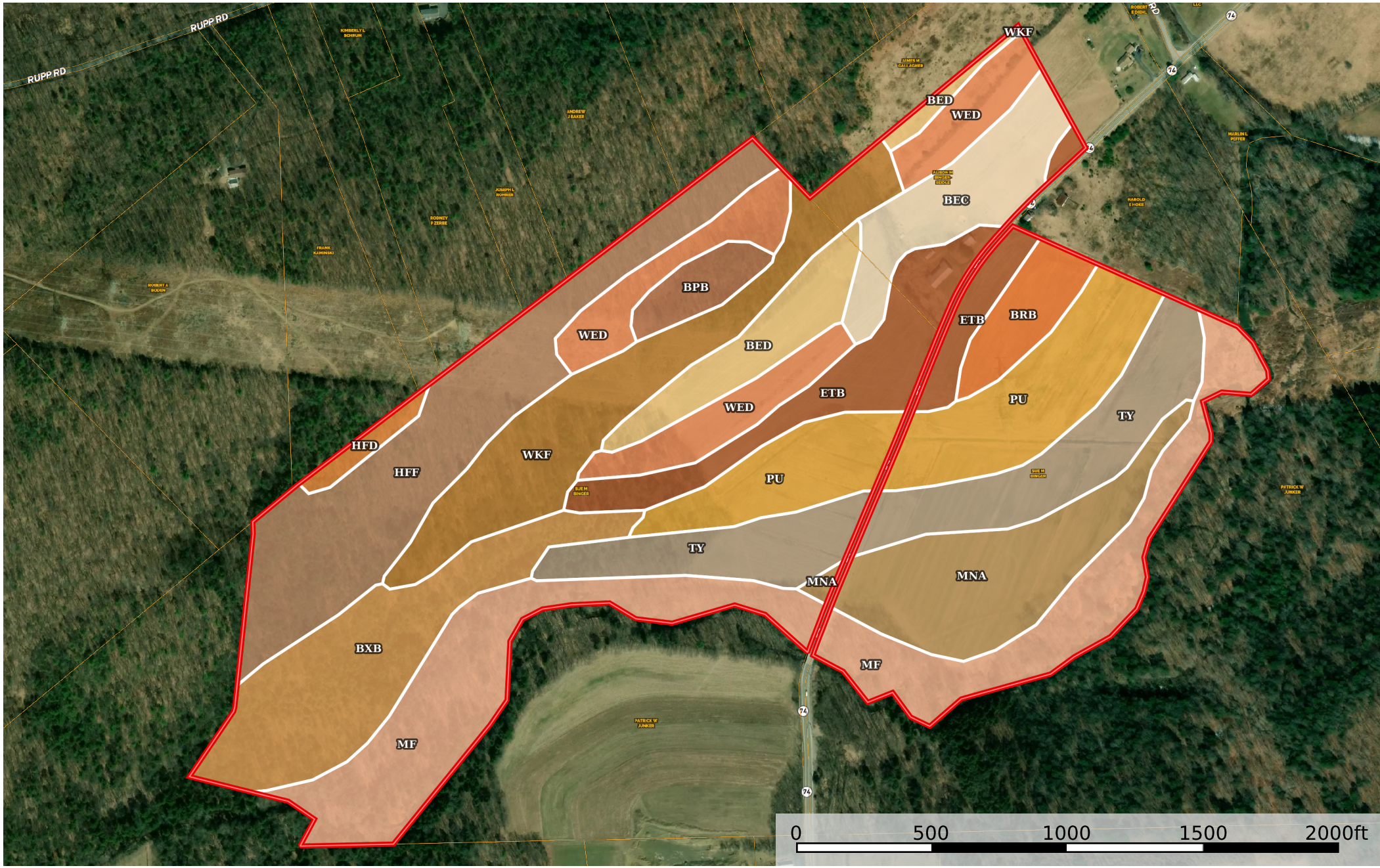
110+/- Acres

74

800ft

750ft





Boundary

 All Polygons 128.84 ac

SOIL CODE	SOIL DESCRIPTION	ACRES	%	CPI	NCCPI	CAP
Mf	Middlebury soils	20.35	15.8	0	42	2w
HfF	Hazleton channery sandy loam, 25 to 60 percent slopes, rubbly	15.15	11.76	0	7	7s
Ty	Tyler silt loam	12.74	9.89	0	47	3w
Pu	Purdy silt loam	12.72	9.87	0	58	4w
BxB	Buchanan channery loam, 0 to 8 percent slopes, extremely stony	11.39	8.84	0	34	6s
WkF	Weikert and Klinsville very shaly silt loams, 25 to 75 percent slopes	11.22	8.71	0	6	7e
MnA	Monongahela silt loam, 0 to 3 percent slopes	9.62	7.47	0	46	2w
WeD	Weikert very channery silt loam, 15 to 25 percent slopes	9.47	7.35	0	24	6e
EtB	Ernest silt loam, 3 to 8 percent slopes	9.08	7.05	0	50	2e
BeC	Berks channery silt loam, 8 to 15 percent slopes	6.03	4.68	0	43	3e
BeD	Berks channery silt loam, 15 to 25 percent slopes	5.08	3.94	0	35	4e
BrB	Brinkerton silt loam, 3 to 8 percent slopes	2.98	2.31	0	33	4w
BpB	Blairton silt loam, 3 to 8 percent slopes	2.09	1.62	0	38	3w
HfD	Hazleton channery sandy loam, 8 to 25 percent slopes, rubbly	0.92	0.71	0	27	7s
TOTALS		128.84(*)	100%	-	35.05	4.19

(*) Total acres may differ in the second decimal compared to the sum of each acreage soil. This is due to a round error because we only show the acres of each soil with two decimal.

 Boundary 38.65 ac

SOIL CODE	SOIL DESCRIPTION	ACRES	%	CPI	NCCPI	CAP
MnA	Monongahela silt loam, 0 to 3 percent slopes	9.37	24.24	0	46	2w
Mf	Middlebury soils	9.01	23.31	0	42	2w
Pu	Purdy silt loam	7.69	19.89	0	58	4w
Ty	Tyler silt loam	7.61	19.68	0	47	3w
BrB	Brinkerton silt loam, 3 to 8 percent slopes	2.98	7.71	0	33	4w
EtB	Ernest silt loam, 3 to 8 percent slopes	1.99	5.15	0	50	2e
TOTALS		38.65(*)	100%	-	46.84	2.75

(*) Total acres may differ in the second decimal compared to the sum of each acreage soil. This is due to a round error because we only show the acres of each soil with two decimal.

 Boundary 90.19 ac

SOIL CODE	SOIL DESCRIPTION	ACRES	%	CPI	NCCPI	CAP
HfF	Hazleton channery sandy loam, 25 to 60 percent slopes, rubbly	15.15	16.8	0	7	7s
BxB	Buchanan channery loam, 0 to 8 percent slopes, extremely stony	11.39	12.63	0	34	6s

Mf	Middlebury soils	11.34	12.58	0	42	2w
WkF	Weikert and Klinsville very shaly silt loams, 25 to 75 percent slopes	11.22	12.44	0	6	7e
WeD	Weikert very channery silt loam, 15 to 25 percent slopes	9.47	10.5	0	24	6e
EtB	Ernest silt loam, 3 to 8 percent slopes	7.09	7.86	0	50	2e
BeC	Berks channery silt loam, 8 to 15 percent slopes	6.03	6.69	0	43	3e
Ty	Tyler silt loam	5.13	5.69	0	47	3w
BeD	Berks channery silt loam, 15 to 25 percent slopes	5.08	5.63	0	35	4e
Pu	Purdy silt loam	5.03	5.58	0	58	4w
BpB	Blairton silt loam, 3 to 8 percent slopes	2.09	2.32	0	38	3w
HfD	Hazleton channery sandy loam, 8 to 25 percent slopes, rubbly	0.92	1.02	0	27	7s
MnA	Monongahela silt loam, 0 to 3 percent slopes	0.25	0.28	0	46	2w
TOTALS		90.19(*)	100%	-	30.0	4.81

(*) Total acres may differ in the second decimal compared to the sum of each acreage soil. This is due to a round error because we only show the acres of each soil with two decimal.

