

# Public Online Only Auction

**Musical Instruments • Farm Toys • Trains • Cast Iron Dogs**  
**BID NOW - Auction Closes May 30 @ 7:00 PM**

**229 W. 4th Street, Quarryville, PA 17566 - Lancaster Co.**



**Directions:** From Lancaster Route 222 South into Quarryville, changes to S. 4th St to auction on right.

**Musical Instruments:** Many beautiful musical instruments; **Guitars;** Gibson Advanced Jumbo; Taylor mod 510; Martins models including D18, D-28DM Del McCoury, D-16RGT, SPD16M, SWD Red Birch, Shenandoah D-6032; Yamaha's models including FGX-412, DW-4S VS, LL-45, FD01S, FG-460S, FG700-S, FG730S, FG800; James Goodall mod WS1416; Nashville Guitar Works mod D10; Blue Ridge mod BR-180; Urban Phoenix/Collection; **Dobros** including Regal, Regal Jerry Douglas Black Lightning, RD-64; **Banjos** mod 4289 Avlarez Minstrel & FHB-260 Flinthill; Horner Student II accordion; Antique & rare **Violins** including Old Red Guernsey, MS Meckley 1927, Austin Bazaar; **Mandolins** including beautiful & rare Stelling models 041, 050, & 065; Kentucky Models KM5000 (autographed), KM1000, KM630, KM600, KM505, KM350, KM 162, KM150; (2) musical hand saws;

**Cast Iron Dogs:** Large collection of cast iron dogs, many sizes including left & right facing, Boston Terriers, Cocker Spaniels, Springer Spaniels, Scotties, English Setters, Dalmatians, Dachshund, Saint Bernard, Bulldog, German Shepherds, Airedales; cast iron coin banks & nut crackers.

**Farm Toys:** Lots 1/16 toys including Ertl Precision tractors, Ertl, SpecCast, Two-Cylinder Club & Franklin Mint; Also includes some older Ertl tractors like IH 3588 2+2, IH 6388 2+2, IH 7488, Case IH 3294, Case 3294, IH 5088, IH 1466, Case 2590; Case threshing machine; and much more.

**Trains:** Lots of HO scale train engines & cars, some new in boxes including brands, Atlas, LGB, Athearn, Accurail, Stewart Hobbies, Roundhouse & more; Also, misc. tracks & other parts & pcs.

**Auctioneers Notes:** A rare opportunity to purchase beautiful musical instrument, farm toys, trains and cast-iron dogs, all from one collection. All information is deemed to be accurate but not guaranteed.

**Online Auction Terms:** BID NOW until auction closes May 30 @ 7:00 PM. Preview Saturday May 18 from 10 AM-2 PM. Also Thursday May 23 from 4PM - 8PM Or by appointment M-F 9 AM - 4 PM. Pickup Day Monday June 3 from 11 AM - 6 PM. All items at 229 W. 4th St. Quarryville PA 17566. 10% buyer premium. Place bids at [beiler-campbellauctions.com](http://beiler-campbellauctions.com). Call auctioneers with any questions.

For additional pictures go to [www.beiler-campbellauctions.com](http://www.beiler-campbellauctions.com) or [www.GoToAuction.com](http://www.GoToAuction.com) or [www.auctionzip.com](http://www.auctionzip.com)

**BEILER-CAMPBELL**  
**AUCTION SERVICES**



AY# 002026

[www.beiler-campbellauctions.com](http://www.beiler-campbellauctions.com) • 888-209-6160

**Auctioneers:**

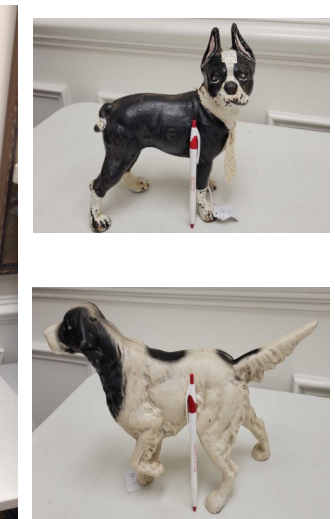
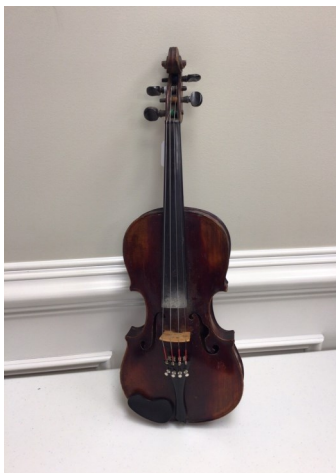
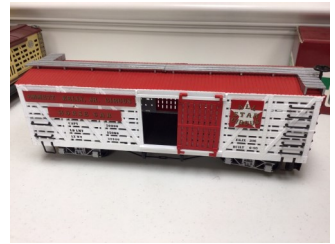
Christ Taylor 717-371-1915 AU# 005421

Harold Martin 717-738-4228 AA# 019488

Wilmer Martin 717-333-4881 AA# 019644

**Seller:** Estate of Jason Bange





For additional pictures go to: [www.beiler-campbellauctions.com](http://www.beiler-campbellauctions.com) • [www.auctionzip.com](http://www.auctionzip.com) • [www.gotoauction.com](http://www.gotoauction.com)