

NORTHUMBERLAND COUNTY REAL ESTATE AUCTION

Friday, November 17, 2023 @ 3:00 p.m.

Farmhouse & Outbuildings

84+/- acres • Tillable • Pasture • Woods

950 Shamrock Rd Paxinos PA ~ Shamokin Twp



Directions: From Route 61 take Shamrock Rd north to property on the right.

84-acre farm in Northumberland County in a secluded setting with beautiful views of Irish Valley. 50 +/- tillable acres with a small stream and some woods. Approx. 35 acres of pasture with high-tensile fence. The property includes a 2-story farmhouse with a detached 2-car garage, bank barn, 2 silos, 16x30 chicken coop, 22x34 and 32x52 loafing sheds, 30x40 equipment shed w/corn crib, 22x32 shed, and other small outbuildings.

Open House Date: Oct. 14, 2023 from 10:00 a.m.-noon and Oct. 17, 2023 from 2:00-4:00 p.m.

Terms: \$50,000 deposit day of auction. Buyer pays 2% transfer tax. Settlement 60 days or before.

For additional pictures go to www.beiler-campbellauctions.com or www.GoToAuction.com or www.auctionzip.com

BEILER-CAMPBELL
AUCTION SERVICES



AY# 002026

www.beiler-campbellauctions.com • 888-209-6160

Auctioneers:

Matt Bergey AA #019473 Ph: (570)-412-0304

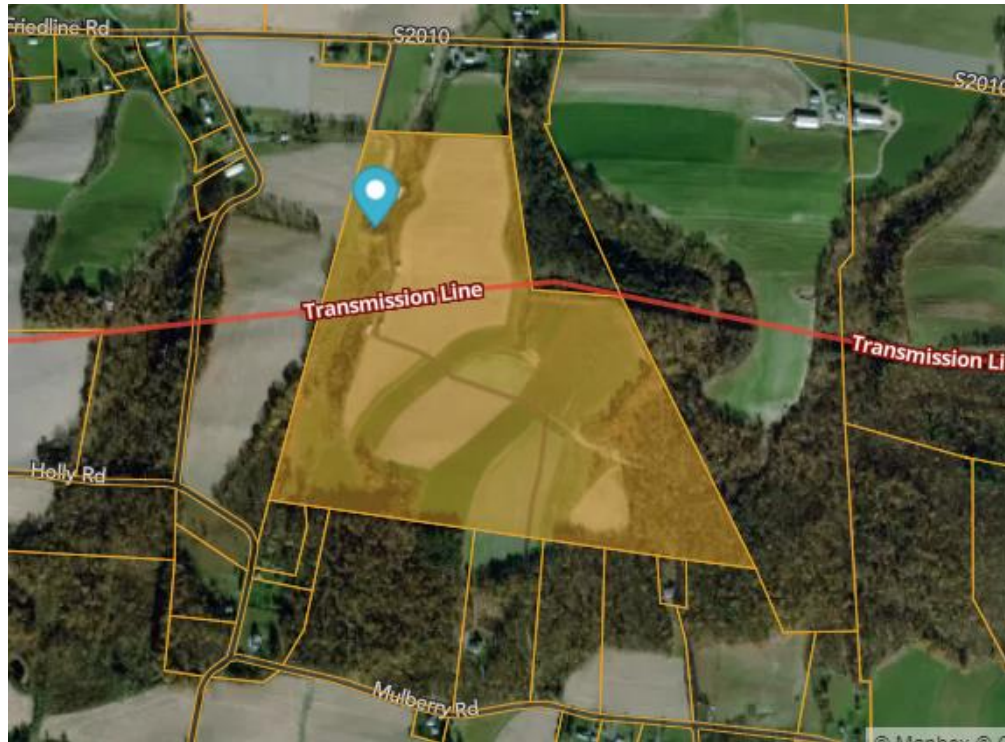
Jake Yoder AU #005851 Ph: (717)-513-5386

Attorney: Anthony Michetti

Ph: (570)-286-9999

Seller: Wendell & Elaine Fox





For more information, pictures and forms go to: www.beiler-campbellauctions.com or www.auctionzip.com or www.GoToAuction.com

BEILER-CAMPBELL
AUCTION SERVICES
www.beiler-campbellauctions.com • 888-209-6160



Auctioneer: Jake Yoder AU #005851
 Ph. (717)-513-5386
 Matt Bergey AA #019473
 Ph. (570)-412-0304
Attorney: Anthony Michetti
 Ph. (570) 286-9999

