

PUBLIC AUCTION

Saturday May 27, 2023 @ 9 A.M.

Live Edge Slabs & Slab Logs
Slab Mizer; (2) JD Wheel Loaders;
Slasher Saw; Straight Line Rip Saw

700 Nottingham Rd., Peach Bottom, PA 17563 - Lancaster County



Air Dried Slabs



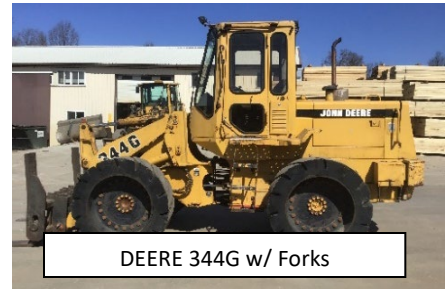
Kiln Dried, Sanded, Slabs



DEERE 444K w/o Forks



MB200 SlabMizer



DEERE 344G w/ Forks

Directions: From Lancaster take 272 S. or 222 S. to Wakefield, then take 272 S. to auction on Left.

'22 MB 200 Slabmizer by Woodmizer with auto control, 6' x 20' deck and sanding head; '14 JD 444k wheel loader, 17110 hrs., engine rebuilt @ 13410 hrs., w. Setco 17.5 x 25 hard rubber wheels (Very Nice), Forks and bucket sold separate; New JRB att. Rockland 4' forks; used JRB att. 8' Mat. Bucket; '96 JD 344G loader 28335 hrs., 52x9x14 hard rubber wheels, very strong eng. And recent trans. Rebuilt, sold with forks; CSI Log Slasher, 60" Bar; Mattison 404 straight line rip saw; 4.5' x 24' Primitive wooden corn crib, 10' high; 14'x36' Primitive wooden show room building w. attic (to be removed); Skids of 4' long 4x4 and 6x6 blocking; skids 4' long drying sticks.

Auctioneer Notes: Take this opportunity to purchase 150 KD S2S and sanded, 400 +/- air dried slabs on sticks in wholesale quantities in most domestic species, Cut mostly 2.5" thick, up to 65" wide and up to 21' long; Lg. amount of Black Walnut, balance in Purple Poplar; White Oak, Paulonia, Cherry, Spalted Sycamore and Maple; Any large diameter logs that come in till auction date will be sold as slab logs.

Can't make it to the auction? Equip. offered at 11 AM, online bidding available through Proxibid; Extra 5% buyers' premium for online buyers.

Terms: 10% Buyers Premium. Payment can be made by cash, PA check or credit card with an additional 3% fee. Stoltzfus Forest Products is an ongoing business liquidating only the live edge slab portion and shifting their interest to other products, 6% PA sales tax collected unless filling out and signing an exemption form.

For additional pictures go to www.beiler-campbellauctions.com or www.GoToAuction.com or www.auctionzip.com



BEILER-CAMPBELL
AUCTION SERVICES



AY# 002026

www.beiler-campbellauctions.com • 888-209-6160

Auctioneer:

Noah Shirk 717-354-0192 AU# 005928

Harold Martin 717-738-4228 AA# 19488

Sellers:

Stoltzfus Forest Products 717-548-2668 Ext. 104





CTR Slasher Saw 60" Bar



New 4' Rockland Forks



Mattison 404 Straight Line Saw



Primitive Showroom



Inside Primitive Showroom



Purple Poplar Slabs



For additional pictures go to www.beiler-campbellauctions.com or www.GoToAuction.com or www.auctionzip.com



BEILER-CAMPBELL AUCTION SERVICES



AY# 002026

www.beiler-campbellauctions.com • 888-209-6160