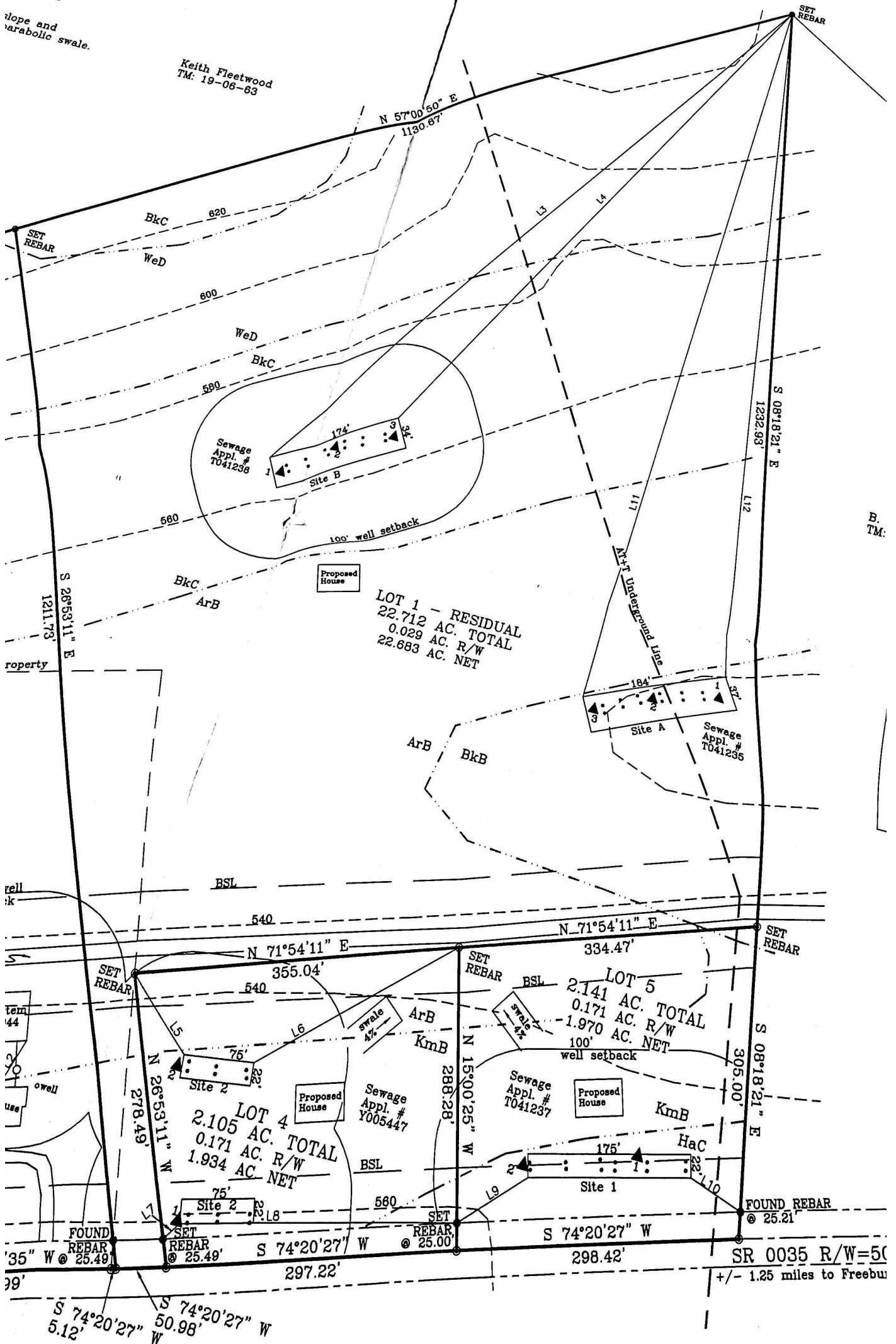


straw mulch on steeper slopes will be slope and parabolic swale.

Keith Fleetwood
TM: 19-06-83



LOT 1 - RESIDUAL
22.712 AC. TOTAL
0.029 AC. R/W
22.683 AC. NET

LOT 4
2.105 AC. TOTAL
0.171 AC. R/W
1.934 AC. NET

LOT 5
2.141 AC. TOTAL
0.171 AC. R/W
1.970 AC. NET
100' well setback

B. TM:

SR 0035 R/W=50
+/- 1.25 miles to Freebu