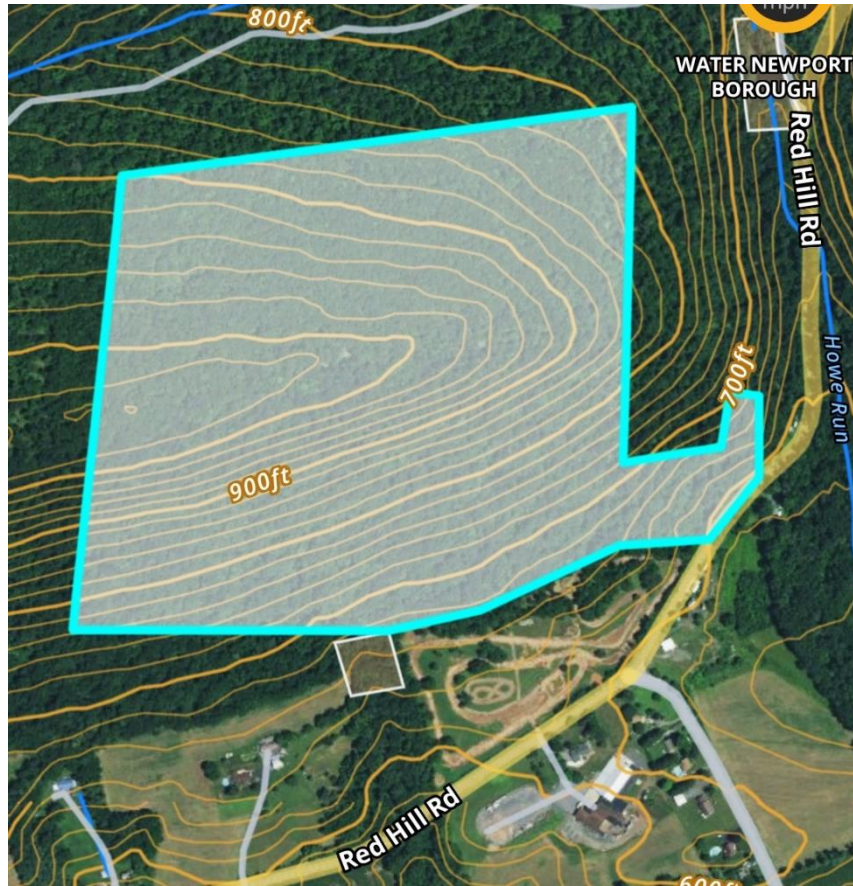


# PUBLIC REAL ESTATE AUCTION

92.88 Acres of Woodland  
Friday Evening August 26, 2022 @ 6:00 P.M.

00 Red Hill Rd, Newport, PA 17074 - Perry County



**Directions:** From Newport take Rt. 34 N for 2.7 mi. to property on left.

**Property Description:** 92.88 acre mostly wooded property with easy access from Route 322. Road frontage and a driveway from Rt. 34, plus a right-of-way from Mountain Rd. Plenty of trails with a few look-out spots with view of the Juniata River. Topography is level to sloping, to some steeper ground. A great hunting property, a potential cabin or homesite and a timber investment opportunity. Perc and probe test completed. Approved for a sandmound.

**Open House Dates:** Wed. August 3, 5-7 P.M. & Sat. August 6, 10 A.M.-12 P.M. For more details or a private showing call Meryl @ 717-629-6036.

**Terms:** Settlement on or before October 25, 2022. \$30,000.00 down payment on the day of the auction. 2% transfer tax to be paid by the buyer. Real Estate taxes to be prorated from settlement day.

**Real Estate Taxes:** \$144.84

**Attention Realtors:** Broker Participation offered to Realtors with a buyer, your buyers must be preregistered.

For additional pictures go to [www.beiler-campbellauctions.com](http://www.beiler-campbellauctions.com) or [www.GoToAuction.com](http://www.GoToAuction.com) or [www.auctionzip.com](http://www.auctionzip.com) ID# 23383

**BEILER-CAMPBELL**  
AUCTION SERVICES



AY# 002026

[www.beiler-campbellauctions.com](http://www.beiler-campbellauctions.com) • 888-209-6160

**Auctioneer:** J. Meryl Stoltzfus  
AU#005403 Ph. 717-629-6036

**Sellers:** Worthy Enterprises, Inc.





For additional pictures go to [www.beiler-campbellauctions.com](http://www.beiler-campbellauctions.com) or [www.GoToAuction.com](http://www.GoToAuction.com) or [www.auctionzip.com](http://www.auctionzip.com) ID# 23383

**BEILER-CAMPBELL**  
AUCTION SERVICES



AY# 002026

[www.beiler-campbellauctions.com](http://www.beiler-campbellauctions.com) • 888-209-6160

**Auctioneer: J. Meryl Stoltzfus**  
**AU#005403 Ph. 717-629-6036**

**Sellers: Worthy Enterprises, Inc.**

