

All fields

219 ac

SOIL CODE	SOIL DESCRIPTION	ACRES	PERCENTAGE OF FIELD	SOIL CLASS	NCCPI
■ KaC	Klinesville channery silt loam, 8 to 15 percent slopes	72.87	33.3%	4	23.5
■ KWF	Klinesville and Weikert soils, 25 to 60 percent slopes	56.29	25.7%	7	5.6
■ CaB	Calvin channery loam, 3 to 8 percent slopes	30.52	13.9%	2	42.6
■ CaD	Calvin channery loam, 15 to 25 percent slopes	14.95	6.8%	4	35.0
■ CaC	Calvin channery loam, 8 to 15 percent slopes	13.27	6.1%	3	40.5
■ WeC	Weikert channery silt loam, 8 to 15 percent slopes	12.93	5.9%	4	23.4
■ KaB	Klinesville channery silt loam, 3 to 8 percent slopes	5.72	2.6%	3	24.8
■ BkC	Berks channery silt loam, 3 to 8 percent slopes	3.68	1.7%	2	38.9
■ HwB	Hustontown silt loam, 3 to 8 percent slopes	3.45	1.6%	2	41.4

2 fields, 219 acres in Fulton County, PA						
■	BkD	Berks channery silt loam, 15 to 25 percent slopes	2.75	1.3%	4	29.8
■	BkC	Berks channery silt loam, 8 to 15 percent slopes	1.40	0.6%	3	35.7
■	KaD	Klinesville channery silt loam, 15 to 25 percent slopes	1.08	0.5%	6	20.3
			218.91			24.1

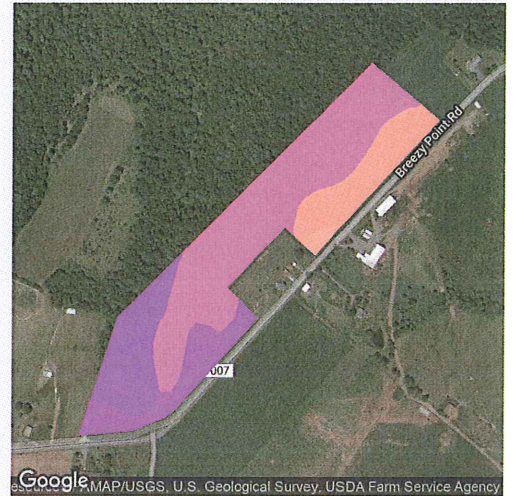
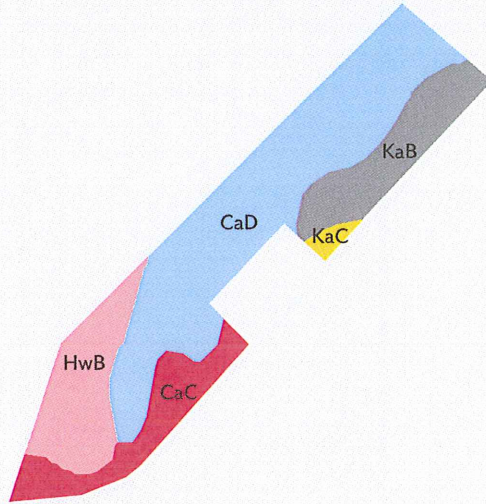
2 fields, 219 acres in Fulton County, PA

AVG NCCPI

COUNTY AVG

35.3

33.1



Google

Map data ©2018 Google

QUALITY 14 60

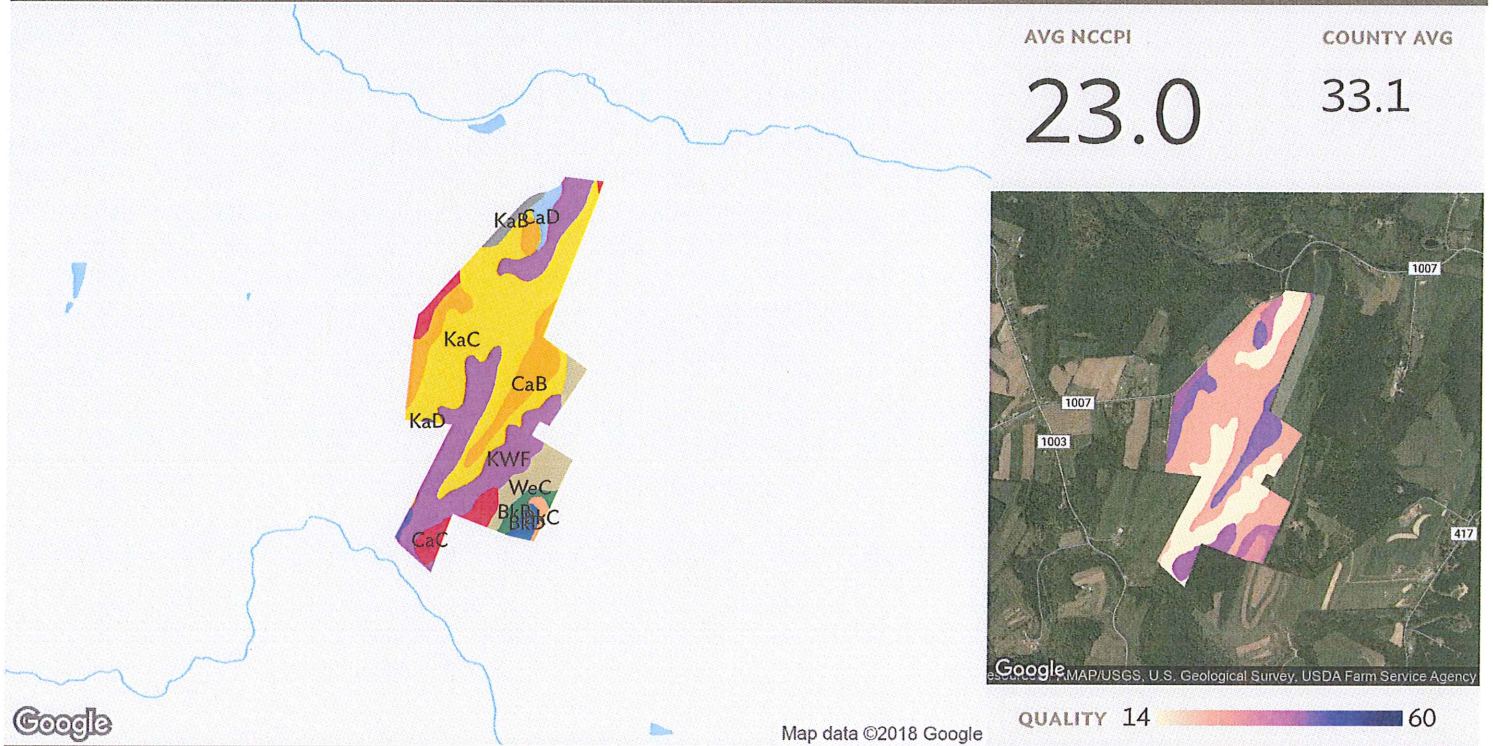
Field 1

19 ac

Source: NRCS Soil Survey

SOIL CODE	SOIL DESCRIPTION	ACRES	PERCENTAGE OF FIELD	SOIL CLASS	NCCPI	
CaD	Calvin channery loam, 15 to 25 percent slopes	11.09	56.9%	4	35.0	
HwB	Hustontown silt loam, 3 to 8 percent slopes	3.45	17.7%	2	41.4	
KaB	Klinesville channery silt loam, 3 to 8 percent slopes	2.49	12.8%	3	24.8	
CaC	Calvin channery loam, 8 to 15 percent slopes	2.25	11.6%	3	40.5	
KaC	Klinesville channery silt loam, 8 to 15 percent slopes	0.19	1.0%	4	23.5	
					19.47	35.3

2 fields, 219 acres in Fulton County, PA



Field 2

Source: NRCS Soil Survey

199 ac

SOIL CODE	SOIL DESCRIPTION	ACRES	PERCENTAGE OF FIELD	SOIL CLASS	NCCPI
KaC	Klinesville channery silt loam, 8 to 15 percent slopes	72.68	36.4%	4	23.5
KWF	Klinesville and Weikert soils, 25 to 60 percent slopes	56.29	28.2%	7	5.6
CaB	Calvin channery loam, 3 to 8 percent slopes	30.52	15.3%	2	42.6
WeC	Weikert channery silt loam, 8 to 15 percent slopes	12.93	6.5%	4	23.4
CaC	Calvin channery loam, 8 to 15 percent slopes	11.02	5.5%	3	40.5
CaD	Calvin channery loam, 15 to 25 percent slopes	3.86	1.9%	4	35.0
BkB	Berks channery silt loam, 3 to 8 percent slopes	3.68	1.8%	2	38.9
KaB	Klinesville channery silt loam, 3 to 8 percent slopes	3.23	1.6%	3	24.8
BkD	Berks channery silt loam, 15 to 25 percent slopes	2.75	1.4%	4	29.8

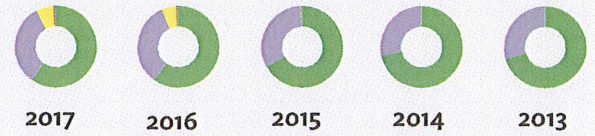
2 fields, 219 acres in Fulton County, PA						
■	BkC	Berks channery silt loam, 8 to 15 percent slopes	1.40	0.7%	3	35.7
■	KaD	Klinesville channery silt loam, 15 to 25 percent slopes	1.08	0.5%	6	20.3
			199.44			23.0

2 fields, 219 acres in Fulton County, PA



All fields

219 ac

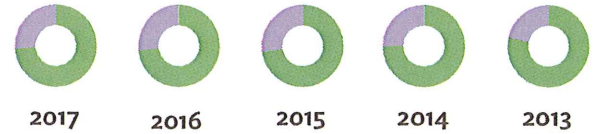


	2017	2016	2015	2014	2013
Grass/Pasture	60.1%	60.1%	67.1%	71.6%	70.5%
Non-Cropland	32.1%	33.1%	32.0%	27.5%	29.2%
Corn	6.9%	6.1%	0.1%	-	-
Other	0.9%	0.7%	0.7%	0.9%	0.3%



Field 1

19 ac

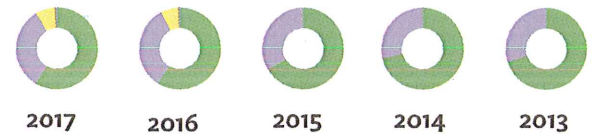


	2017	2016	2015	2014	2013
Grass/Pasture	73.8%	73.1%	72.6%	74.9%	78.3%
Non-Cropland	26.0%	26.6%	27.2%	24.9%	21.4%
Other	0.2%	0.2%	0.2%	0.2%	0.2%



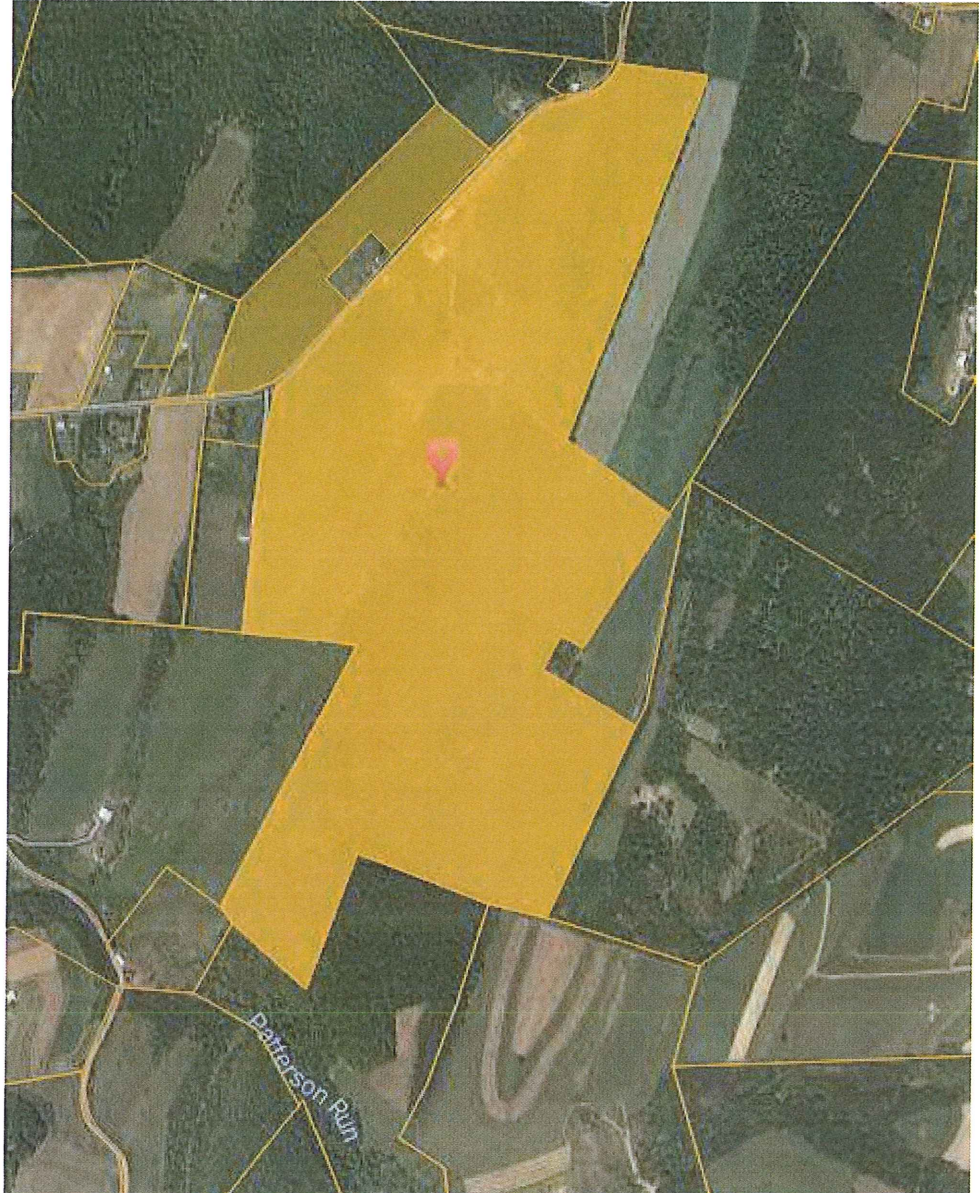
Field 2

199 ac





	2017	2016	2015	2014	2013
Grass/Pasture	58.7%	58.8%	66.6%	71.2%	69.7%
Non-Cropland	32.7%	33.7%	32.5%	27.8%	30.0%
Corn	7.6%	6.7%	0.2%	-	-
Other	1.0%	0.8%	0.8%	1.0%	0.3%

Source: NASS Cropland Data Layer



2 fields, 219 acres in Fulton County, PA

Fulton County, PA

FIELD	ACRES	LOCATION	OWNER (LAST UPDATED)	OWNER ADDRESS
1 	19.47	APN: 0502005000	EVANS, JAMES F & JOANNE G (04/24/2017)	3466 BREEZY POINT RD, MC CONNELLSBURG, PA 17233
2 	199.44	APN: 0502005000	EVANS, JAMES F & JOANNE G (04/24/2017)	3466 BREEZY POINT RD, MC CONNELLSBURG, PA 17233

218.91

