

REAL ESTATE AUCTION

102 +/- Acre + 33 Bonus Acres - Dairy Farm

Quarryville Area

Fully Operating Dairy Facility w/ 2 Story Stone Farmhouse

Friday, November 12, 2021 @ 10:30 AM

309 Pumping Station Road, Quarryville, Pa. 17566 Lancaster County



Directions: Rt. 372 East, turn right on Pumping Station Road, property on left

Property Description:

- 60 Cow Dairy Barn-tie stalls, Bank Barn-40x70, Cow Stable-40x140, Box Pen Wing-21x50, Milkhouse-20x26 (with office, storage and bathroom), Loafing Barn-50x70 (2018), **Multi-Purpose Building 50x160 (Shop 50x32 / Equipment Shed 50x68 / Dry Cow Barn 50x60)**, 14-Stall Calf Kennel 8x54, 3 Silos (14x55, 14x75, 20x70), Corncrib/Wagon Shed-26x34, Manure Pit (Slurry-Store 300,000 gal), 1,310-gal Stainless Steel Milk Tank & Surge Pipeline. This property offers a complete package for a true farm buyer, with farmhouse, a pond and beautiful setting. Bring your dogs, cows, horses, etc.
- 3 beds, 2 bath Farmhouse, Spring House-8x8, Smoke House-9x9
- Situated on 102+/- Plus 33+/- acres located under the power lines, are available for the buyer to use.
- Farm is not in preserve. Act 319. Lower Taxes!

Lancaster County • Eden Township • Solanco School District

Tax parcels: 230-95760-0-0000, Taxes \$4,957 (2021)

Open Houses: Wednesday, Oct. 6, 1-4 PM • Friday, October 8, 1-4 PM

Terms: Down payment of \$150,000 required day of auction. Settlement on or before **December 28, 2021**. Transfer taxes to be paid by buyer. Real Estate taxes shall be prorated.

Attention Realtors: 1% Broker Participation being offered to realtors who preregister with their buyers and who become the successful bidder on day of auction. Must register 48 hours prior to date of auction.

Pre-registration forms are available on-line at www.beiler-campbellauctions.com

For forms & additional pictures go to: www.beiler-campbellauctions.com • www.auctionzip.com • www.GoToAuction.com

BEILER-CAMPBELL
AUCTION SERVICES



AY# 002026

www.beiler-campbellauctions.com • 888-209-6160

Auctioneers:

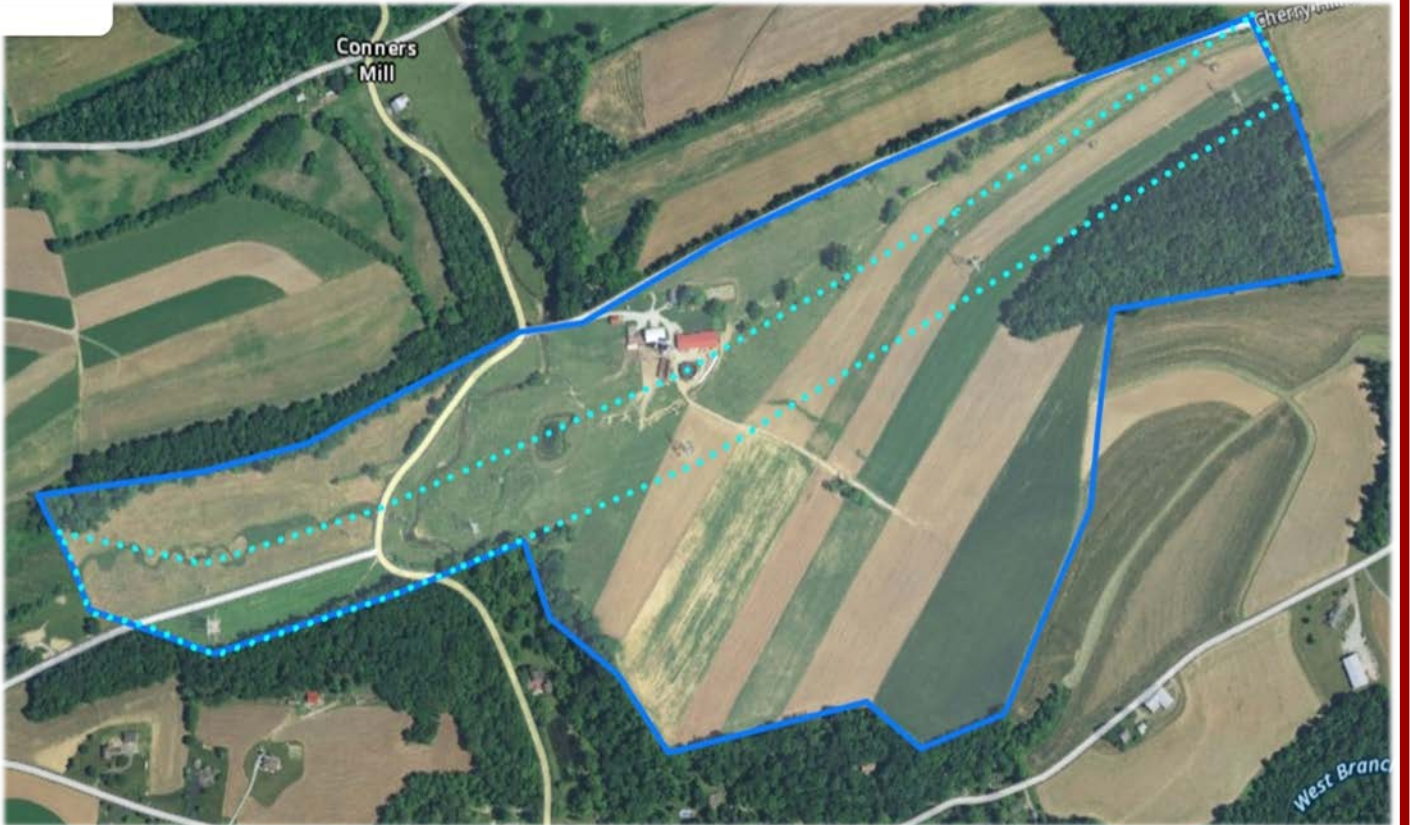
Elvin Stoltzfus (610) 333-5447 AA #019514

Christ Taylor (717) 371-1915 AU#005421

Seller: Albright Family Enterprises LP

Attorney: James Noel - Appel, Yost, & Zee LLP. (717) 394-0521





For additional pictures go to www.beiler-campbellauctions.com or www.auctionzip.com