

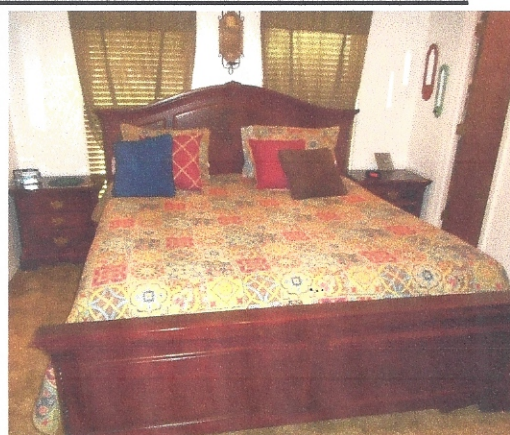
ESTATE AUCTION

SUNDAY, OCT. 27, 2019 * 1:00 PM

BOUCHELLE TRUST *

SPRINGDALE, AR

DIRECTIONS: FROM SPRINGDALE HIGH SCHOOL, GO WEST ON EMMA AVE. TO 1407 W. EMMA AVE. PARKING AVAILABLE AT SPRINGDALE HIGH SCHOOL FIELD HOUSE.



FURNITURE * APPLIANCES

LG True Steam Sensor Dry Front Load Grey Electric Dryer & Matching Direct Drive Steam Front Load Washer, Both Have Stainless Tubs & On Stands Like New * 2011 Frigidaire 2 Door Refrigerator * Nice Tan Lazy Boy Couch * 2 Brown Matching Lift Chairs Nice * Panasonic 42" Flat Screen TV w/Remote on Stand * Green Porch Rocker * Lighted 4 Shelf Curio * Oak & Glass Coffee, 2 Lamp & Sofa Table All Matching * Sev. Nice Wall Pictures * DVD Player * Lots Nice Decorative Home Décor * Plant Stands * 2 Tile Top Side Tables * Oak 3 Shelf Display Cabinet SM Ornate * White Kitchen Aid Mixer on Stand * GE Stainless Microwave * Kitchen Utensils, Towels, Pots & Pans * Venturer 10" TV * SM Metal Baker's Rack * 2 Wood Deck Chairs * Cast Metal SM Bench * 15 CF Upright Freezer * Futon * Sev. Bookshelves * Tell City Maple Round Dining Table & 4 Chairs * Unusual Oak Bent Wood Rocker Nice * Magazine Rack Side Table * 2 TV's w/DVD & VCR Built In * Computer Desk & Chair * Wicker Stool * Oak Day Bed w/Trundle * Singer Portable Sewing Machine * Nice Cherry Wood King Size Bedroom Suite: Complete Bed, 2 Nightstands, 5 Drawer Chest on Chest, 6 Drawer Dresser w/Mirror * Cherry Jewelry Armoire * Shark Navigator Vacuum *

ANTIQUES & COLLECTIBLES

2 Cedar Chests * Unusual Spiral Walnut Hat Tree * Tall Porcelain Thermometer Nature's Remedy * Hand Stitched Quilts * Sev. Old Arkansas Postcards * Ceramic Umbrella Stand * World Globe Bookends * Child's Rocker * Raggedy Ann & Andy Dolls * Bras Hand Held School Bell * Needlepoint Foot Stool * Mini Cuckoo Clock *

TOOLS * GLASSWARE

Set Craftsman Nut Drivers in Box * 4" & 5" Vices * Ryobi Cordless Drill * B&D 3" Belt Sander in Box * Garden Cart on Wheels * 2 Wheel Dolly * B&D 18V Weed Eater * Ext. Cords * Sump Pump * Nut & Bolt Organizer * Screwdrivers, Hammers, Hand Wrenches, Socket Set * Hand Saws * Hatchet * 2 SM Tool Boxes * True Temper Wheel Barrow w/No Flat Tire * 6' Alum. Step Ladder * Hand & Garden Tools * Sev. Carousel Music Boxes * Royal Doulton Lady Figures * Cracker Jar * Carnival Glass Bowl * Stems * Fiesta Bowls & Other * Measuring Pitchers * LG Set Poppy Trail by Metlox * Corningware * Set Nikko Christmas * Crystal Bells *

MISCELLANEOUS

Hammock * Hose Reel on Wheels * 3 Closets of Clothes * New Ladies Shoes Size 5 1/2 - 6 * Shepherd's Hooks * Cookbooks * 33 Albums * Christmas & Halloween Décor * Plastic Ware * Lots Baskets * Fire Logs * 2 Hunting Knives * Horseshoes * 4 Tier Metal Shelf * Invacare Wheel Chair * Dell Computer, Canon Printer, Paper Shredder * Ladies Purse * JVC Boom Box *

AUCTIONEER'S NOTE: Mrs. Bouchelle has lots of nice furniture, antiques, glassware, clothing, tools plus a very nice washer & dryer. Parking is limited on the street but available at Springdale High School Field House. Go to web for pictures. Larry & Staff

TERMS & CONDITIONS: Cash or Check with Proper ID. Nothing Removed Until Settled For. Not Responsible for Accidents, Illness, Injury or Lost Articles. All Announcements Made Day of Sale Supersede All Previous Advertisements. All items Sold "AS IS". Concession/Restrooms.

 Find us on
Facebook

www.gotoauction.com #4979

AUCTIONZIP.COM #24078

NO BUYER'S PREMIUM

*Experienced Staff
Specializing in Personalized
"On-Site" Auctions
A Satisfied Customer, Our
Best Advertisement!*

Licensed w/ Lazenby
Realty Group
Fayetteville, AR

Large Tent and Display Wagons Available

Auctions by Larry R. Williams

Realtor * Auctioneer * Bonded * AR License #560
19847 Sonora Road, Springdale, AR 72764
479-756-0238

**REAL ESTATE
FARM SALES
ESTATES, ANTIQUES
MACHINERY
LIQUIDATIONS**