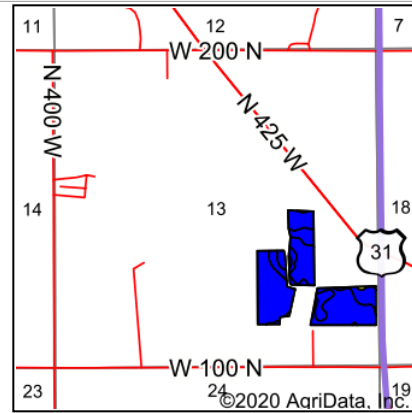
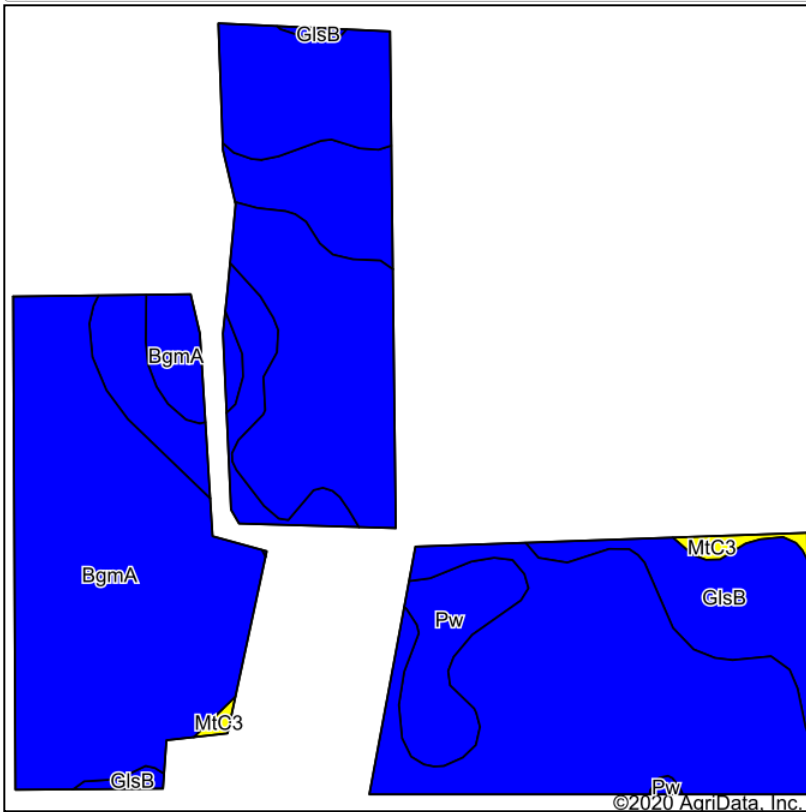


### Soils Map



State: **Indiana**  
 County: **Miami**  
 Location: **13-27N-3E**  
 Township: **Peru**  
 Acres: **41.18**  
 Date: **9/22/2020**



Soils data provided by USDA and NRCS.

Area Symbol: IN103, Soil Area Version: 24

Code	Soil Description	Acres	Percent of field	Non-Irr Class Legend	Non-Irr Class *c	Corn	Soybeans	*n NCCPI Soybeans
BgmA	Blount silt loam, ground moraine, 0 to 2 percent slopes	31.30	76.0%	<span style="display:inline-block; width:10px; height:10px; background-color:blue;"></span>	llw	141	45	59
Pw	Pewamo silty clay loam, 0 to 1 percent slopes	6.66	16.2%	<span style="display:inline-block; width:10px; height:10px; background-color:blue;"></span>	llw	157	47	66
GlsB	Glynwood silt loam, ground moraine, 2 to 6 percent slopes	2.89	7.0%	<span style="display:inline-block; width:10px; height:10px; background-color:blue;"></span>	lle	132	46	54
MtC3	Morley silty clay loam, 6 to 12 percent slopes, severely eroded	0.33	0.8%	<span style="display:inline-block; width:10px; height:10px; background-color:yellow;"></span>	lVe	105	37	33
<b>Weighted Average</b>						<b>142.7</b>	<b>45.3</b>	<b>*n 59.6</b>

\*n: The aggregation method is "Weighted Average using all components"  
 \*c: Using Capabilities Class Dominant Condition Aggregation Method

Soils data provided by USDA and NRCS.