

TBM NO. 1
 A Chiseled '□' on Top of 24" Conc.
 Flared End Section Located
 20.5' Left of Sta. 3+62.5
 Elev. 64.03

L.P. w/1.5'
 Conc. Base
 (Typ.)

(STB)

(SF)

(SF)

RESERVE AREA

MANIFOLD BOX (TY)

ELECTRICAL CONDUIT
 TO CONTROL PANEL

PULL BOX (TYP.)

Jerry M. New bold, Jr.
 Guest Cottage

1-Sty-F
 Block
 Foundation
 &
 Basement

18" Maple
 40" Oak
 15" Hickory
 18" Holly
 24" Syc.
 10" Holly
 30" Elm
 28" Hickory

1-Sty-F
 Storage
 Room

1-Sty-B
 BAIN
 DORMITORY

3'x 2.5' H.
 A.C. on
 4' Conc. Slab

1" Galv. Gas

Roof Drain
 (R.D.)

Overhang
 On Bldg. 1.5' Avg.
 To Exterior Wall

3'x 2' H.
 Elec. Trans. On
 3' Conc. Slab

San. M.H.
 Rim 74.51
 Inv. 67.14 (N) 6"
 Inv. 67.26 (S) 6"
 Inv. 67.38 (SE) 6"
 Inv. 72.41 (DROP) (SE) 6"

1-Sty-Brick
 F.F. 77.00

Exist. Well
 430 ±

DRAINFIELD NO. 1

DRAINFIELD NO. 4

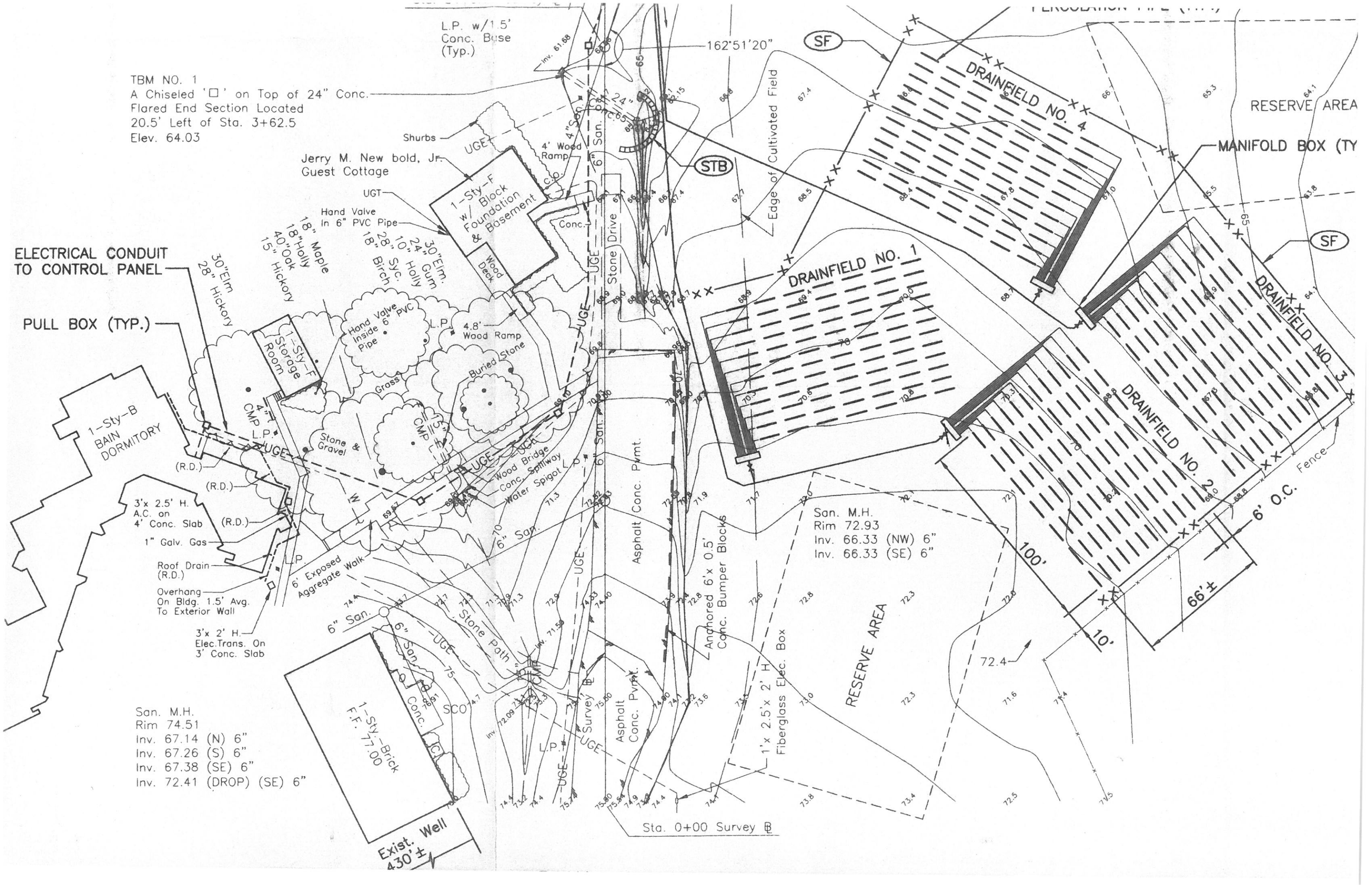
DRAINFIELD NO. 2

DRAINFIELD NO. 3

San. M.H.
 Rim 72.93
 Inv. 66.33 (NW) 6"
 Inv. 66.33 (SE) 6"

RESERVE AREA

Sta. 0+00 Survey



San. M.H.
Rim 63.56
Inv. 57.72 (N) 6"
Inv. 59.56 (S) 6"
Inv. 60.66 (SW) 4"

Sta. 3+75.02 Survey B

From Lodge

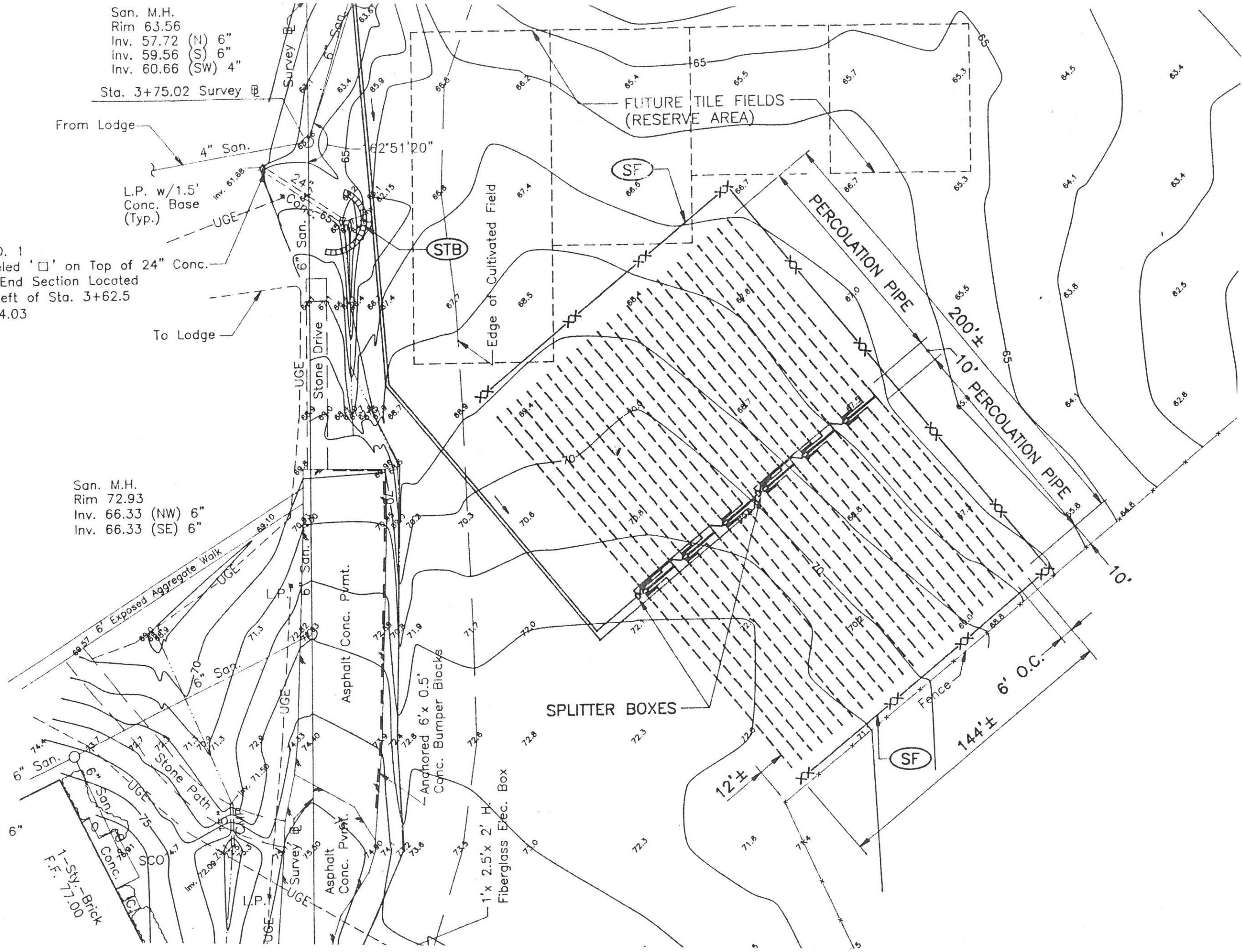
L.P. w/1.5'
Conc. Base
(Typ.)

TBM NO. 1
A Chiseled '□' on Top of 24" Conc.
Flared End Section Located
20.5' Left of Sta. 3+62.5
Elev. 64.03

To Lodge

San. M.H.
Rim 72.93
Inv. 66.33 (NW) 6"
Inv. 66.33 (SE) 6"

San. M.H.
Rim 74.51
Inv. 67.14 (N) 6"
Inv. 67.26 (S) 6"
Inv. 67.38 (SE) 6"
Inv. 72.41 (DROP) (SE) 6"



FUTURE TILE FIELDS
(RESERVE AREA)

STB

Edge of Cultivated Field

PERCOLATION PIPE

200'±

10' PERCOLATION PIPE

10'

SPLITTER BOXES

144'±
6' O.C.

1'x 2.5'x 2' H.
Fiberglass Elec. Box

1-Str.-Brick
F.F. 77.00

SCO 74.7

Survey B

Asphalt
Conc. Pvmnt.

Anchored 6'x 0.5'
Conc. Bumper Blocks

Asphalt Conc. Pvmnt.

6" San.

6" San.

6" San.

6" San.

6" San.

6" San.

6" San.

6" San.

6" San.

6" San.

6" San.

6" San.

6" San.

6" San.

6" San.