



#0 • MUST READ! DETAILS & TERMS

WHAT DO YOU HAVE TO
THIS AUCTION INCLUDES
LAWNMOWERS, SNOW

Loading items: 100/142

Notes



#0A • LIST OF SHIPPING PRICES

CLICK HERE & CHOOSE DOCUMENTS TO VIEW A PDF LIST OF SHIPPING PRICES FOR EACH LOT.

Notes



#1 • 2018 TORO POWER CLEAR SNOW BLOWER

2018 TORO POWER CLEAR 518ZE 18" CUT, 4-CYCLE SNOW BLOWER WITH ELECTRIC START. DEALER SERVICED LAST YEAR AND RUNS GOOD.

Notes



#2 • FRIGIDAIRE CHEST FREEZER

VERY CLEAN. TESTED AND WORKING 28.5" X 20.5" X 32.5"

Notes



#3 • SOLID WOOD BENCH

HAS STORAGE COMPARTMENT AND CUT-OUT OF DEER AND TREES. GOOD CONDITION 40" X 25", SEAT HEIGHT 20.5"

Notes



#4 • VINTAGE PATHE HAND-CRANK PHONOGRAPH

UNIT IS ON CASTERS WITH EXTRA SPARE HEAD AND NEEDLES. GOOD CONDITION. 20" X 20.5" X 44"

Notes



#5 • LARGE FIRE PIT W/PROPANE TANK

GOOD CONDITION 37" X 25"

Notes



#6 • 4 MICHELIN 235/65R18 TIRES

GOOD TREAD. 19,000 MILES ON TIRES.

Notes



#7 • 5 VINTAGE METAL WAGON WHEELS

25" EACH

Notes



#8 • VINTAGE METAL WAGON WHEEL

53"

Notes



#9 • CRAFTSMAN PRECISION PLUS LAWN MOWER

6.5HP MOTOR WITH GOOD COMPRESSION.

Notes



#10 • PULSAR BIG WHEEL LAWN MOWER

150cc MOTOR WITH GOOD

Loading items: 100/142

Notes



#11 • POULAN PRO LAWN MOWER & PARTS WEED EATER LAWN MOWER

140 CC MOTOR WITH GOOD COMPRESSION. A WEED EATER LAWN MOWER FOR PARTS - RECOIL IS STUCK

Notes



#12 • 4 HALOGEN WORK LIGHTS

SEE PHOTOS

Notes



#13 • PROFUSION HEATER

RATED 240VAC, 5000 WATT, 14" X 10.5" X 12.5"

Notes



#14 • COMFORT ZONE HEATER

240V , 5000 WATTS, 14" X 10.5" X 12.5"

Notes



#15 • PROPANE HEATER

250,000 BTU

Notes



#16 • 10 GROW PLANTERS WITH 5 FERTILIZER COVERS

18" X 12.5" X 7"

Notes



#17 • DEWALT 14" CHOP SAW & DEWALT METAL CUTTING BLADE

CHOP SAW TESTED AND WORKING.

Notes



#18 • ENGLISH SADDLE

18" SEAT, 11" FORWARD FLAP, 16" FLAP LENGTH

Notes



#19 • OZARK TRAIL TARP

MEDIUM DUTY 16ft. X 30ft.

Notes



#20 • CRAFTSMAN DRILL AND 2 TOOLSHOP JIG SAWS

CRAFTSMAN 3/8" DRILL - TESTED & WORKING. TOOLSHOP VARIABLE JIG SAW AND TOOL SHOP SINGLE-SPEED JIG SAW, BOTH TESTED AND WORKING.

Notes

#21 • McCULLOCH CHAINSAW

GOOD COMPRESSION.

Loading items: 100/142

Notes



#22 • 8" CAST IRON PAN AND CAST IRON KETTLE

SEE PHOTOS

Notes



#23 • BRASS CANDLE HOLDERS, FIGURINES & BOWLS, COPPER SPOONS & MORE

3 BRASS CANDLE HOLDERS, BRASS FIGURINES, BRASS BOWLS, COPPER SPOONS, COPPER CONTAINER, JEWELRY BOX AND MORE

Notes



#24 • PARTYLITE CASTLE, BUDWEISER & DUCKS UNLIMITED STEINS & CANDLE SNUFFER

PARTYLITE CRYSTAL CASTLE, 3 BUDWEISER COLLECTION STEINS, 1 DUCKS UNLIMITED STEIN AND 1 CANDLE SNUFFER

Notes



#25 • NEW AIR MATTRESS

DOES NOT HAVE PUMP

Notes



#26 • 2 SONY DIGITAL AUDIO/VIDEO CONTROL CENTER STEREO RECEIVERS

2 SONY DIGITAL AUDIO/VIDEO CONTROL CENTER STEREO RECEIVERS

Notes



#27 • MIRROR & PICTURES

MIRROR 20.5" X 28.5", PICTURE AND FRAME 20.5" X 16.5" AND PICTURE AND FRAME 27" X 21"

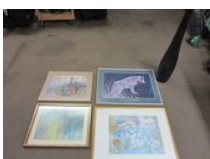
Notes



#28 • 4 PICTURES & 39" VASE

PICTURE SIZES ARE 33.75" X 26", 32" X 24", 25.5" X 19.5" AND 25.5" X 20"

Notes



#29 • 4 NATURE PICTURES & FRAMES

24.5" X 20.5"

Notes



#30 • PARTNER CHAINSAW

GOOD COMPRESSION.

Notes



#31 • CENTRAL PNEUMATIC HOSE REEL WITH HOSE

25ft. X 3/8" NPT

Notes



#32 • 3 SIDE MIRRORS AND NEW LOPRO SJ24

SCISSOR JACK

3 SIDE MIRRORS AND

Loading items: 100/142

Notes

#33 • 2 SKATEBOARDS & PLASTIC SNOWSHOES

SEE PHOTOS

Notes

#34 • 2 NEW METAL PET GATES

1 GRAY AND 1 WHITE

Notes

#35 • FOLDING PLASTIC SAWHORSE

32.5"H X 22.5"W

Notes

#36 • ALC ABRASIVE BLASTER WITH NOZZLE KIT

MISSING GUN.

Notes

#37 • HEATED WATER DISH, 2 WATER TANK

HEATERS & MORE

INCLUDING A RUBBER FEED BUCKET AND 20LB. PROPANE CYLINDER

Notes

#38 • 6 NEW PLASTIC ROOF VENTS

16" X 19"

Notes

#39 • EQUALIZER HITCH

EQUALIZER HITCH

Notes

#40 • BELT SANDER, SKILL SAW, 3 ELECTRIC DRILLS & 5 SANDING DISCS.

DRILLS TESTED & WORKING AND 16" SANDING DISCS.

Notes

#41 • YAMAHA MARINE GAS TANK

6.3 GALLONS

Notes

#42 • VINTAGE ELECTRIC CEMENT MIXER

110 VOLT. TESTED & WORKING.

Notes



#43 • VINTAGE AIR COMPRESSOR

110 VOLT. TESTED & WORKING

Loading items: 100/142

Notes



#44 • BLACK & DECKER WORKMATE PORTABLE WORK BENCH

BLACK & DECKER WORKMATE PORTABLE WORK BENCH

Notes



#45 • MOTOR GUIDE MAGNUM TROLLING MOTOR

34lb. THRUST WITH FOOT PEDAL

Notes



#46 • WEED EATER GAS POWERED WEED EATER & SEED SPREADER & SPRAYER

WEED EATER FL-21 GAS POWERED WEED EATER WITH GOOD COMPRESSION. SEED SPREADER & SPRAYER

Notes



#47 • POULAN PRO GAS WEED EATER, TORO ELECTRIC POWER SHOVEL, CRAFTSMAN WEED EATER

POULAN PRO GAS POWERED WEED EATER WITH GOOD COMPRESSION. TORO ELECTRIC POWER SHOVEL AND CRAFTSMAN ELECTRIC WEED EATER - TESTED & WORKING.

Notes



#48 • HOMELITE WEED EATER, TORO POWER SHOVEL & PORTLAND WEED EATER

HOMELITE GAS POWERED WEED EATER WITH GOOD COMPRESSION. TORO ELECTRIC POWER SHOVEL AND PORTLAND ELECTRIC WEED EATER - TESTED & WORKING.

Notes



#49 • COLEMAN PICTON DOME TENT - LIKE NEW!

9'6" X 10'X6"

Notes



#50 • TAMARACK PLASTIC ATV CARGO CARRIER

35" X 20" X 14"

Notes



#51 • MOOSE PLASTIC ATV CARGO CARRIER

WITH METAL SUPPORT FRAME 37" X 16" X 24"

Notes



#52 • NEW CYCLE COUNTRY YAMAHA 350 BIG BEAR ATV PLOW FRAME

MODEL #10-5051, 44" LONG

Notes



#53 • NEW 2015 POLARIS RANGER 700 SIDE-BY-SIDE FRONT FADER & DASHBOARD

NEW 2015 POLARIS RANGER 700 SIDE-BY-SIDE FRONT FADER & DASHBOARD

Notes



#54 • YAMAHA VENTURE MOTORCYCLE TOURING PACK

YAMAHA VENTURE M

Loading items: 100/142

Notes



#55 • JOHN DEERE RIDING MOWER BAGGER SYSTEM & PUSH MOWER BAGS

JOHN DEERE RIDING MOWER BAGGER SYSTEM, GRASS CHUTES AND PUSH MOWER BAGS.

Notes



#56 • POLARIS HOOD AND TANK COVERS

POLARIS EDGE TOURING HOOD, POLARIS TRAIL BOSS PLASTIC TANK COVER AND POLARIS TANK COVERS.

Notes



#57 • ASSORTMENT OF POLARIS INDY SUSPENSION AND TRACK PARTS

ASSORTMENT OF POLARIS INDY SUSPENSION AND TRACK PARTS

Notes



#58 • DOCK ROLLERS, DOCK STANDS, MARINE TANK & MORE

DOCK ROLLERS 42", NEW DOCK STAND, NEW DOCK WHEEL MARINE TANK, THROTTLE CONTROLLER WITH CABLE, IGNITION WITH CABLE AND MERCURY 115 HP OUTBOARD MOTOR COVER.

Notes



#59 • 1998 CHEVY TRANSFER CASE, 4X4 ACTUATOR AND STARTER

1998 CHEVY 1500 TRANSFER CASE, 4X4 ACTUATOR AND STARTER. SELLER STATES THAT THEY WORK GOOD.

Notes



#60 • UNOPENED 1991 SCORE BASEBALL COLLECTOR SET & BOX OF FOOTBALL CARDS

SEE PHOTOS.

Notes



#61 • 11 VINTAGE PORCELAIN DOLLS, MISC. DOLLS, PADDLE BOARD PADDLES & BALLS

SEE PHOTOS

Notes



#62 • 40', 4-PRONG CORD FOR HOME GENERATOR

SEE PHOTOS

Notes



#63 • VINTAGE LOG ROLLER

SEE PHOTOS

Notes



#64 • METAL TONKA DUMP TRUCK, METAL FORD TRACTOR & METAL JOHN DEERE TRACTOR

METAL TONKA DUMP TRUCK, METAL FORD TRACTOR & METAL JOHN DEERE TRACTOR

Notes

#65 • KEROSENE LAMPS, LAMP AND UNIVERSAL

NO.2 FOOD CHOP

SEE PHOTOS

Loading items: 100/142

Notes



#66 • CARPET SHAMPOO, WOOD CLEANER AND TORCH FUEL

SEE PHOTOS

Notes



#67 • VINTAGE PERFECTION OIL HEATER

24" TALL

Notes



#68 • 1" COILED ROOFING NAILS

SEE PHOTOS

Notes



#69 • CHAIN & HEAVY DUTY HOOKS

SEE PHOTOS

Notes



#70 • NIKOTA AIR COMPRESSOR

2HP, 4 GALLON, 115 PSI AIR COMPRESSOR - TESTE & WORKING.

Notes



#71 • ARCTIC KING DEHUMIDIFIER

VERY CLEAN - TESTED & WORKING

Notes



#72 • VINTAGE WOOD ROCKING CHAIR & HANGING MIRROR

MIRROR FOLDS AND IS 42" X 44"

Notes



#73 • PORTABLE HEAT STAND

PORTABLE HEAT STAND

Notes



#74 • HOOVER WIDE PATH VACUUM CLEANER

TESTED & WORKING

Notes



#75 • SNOW JOE 16" ELECTRIC SNOW BLOWER.

TESTED & WORKING, HOWEVER, SWITCH NEEDS TO BE SHIMMED IN ORDER TO WORK.

Notes



#76 • PLASTIC TOTES & CRATES

SEE PHOTOS

Loading items: 100/142

Notes



#77 • NEW MARINE LAND CANISTER FILTER

SEE PHOTOS

Notes



#78 • MICH GOLDEN LIGHT NEON SIGN

DOES NOT POWER UP 24" X 21"

Notes



#79 • SKIL ROUTER, ROUTER BITS, BLACK & DECKER WORKMATE BENCH TOP

SKIL ROUTER - TESTED & WORKING.

Notes



#80 • 7 FISHING POLES W/REELS & METAL 6 GAL. MARINE TANK

SEE PHOTOS

Notes



#81 • 2 SOLID WOOD DOORS

LEFT HINGE IN-SWING 30'X 78" AND 30" X 79-3/4"

Notes



#82 • 3 SOLID WOOD DOORS

RIGHT HINGE IN-SWING. (2) 30" X 77-3/4" AND (1) 30" X 77.5"

Notes



#83 • SET OF SOLID WOOD FRENCH DOORS

EACH DOOR IS 36" X 80"

Notes



#84 • VINTAGE HEAVY DUTY SCALE WITH WEIGHTS

SEE PHOTOS

Notes



#85 • VINTAGE HEAVY DUTY SCALE WITH WEIGHTS

WHEELS ON SCALE DON'T TURN

Notes



#86 • WOOD PLANK

11.5" X 8'4"

Notes



#87 • 4 FIRESTONE TRANSFORCE LT275/70R18

TIRES

GOOD TREAD, SELLER

Loading items: 100/142



Notes

#88 • LIFE CORP ELECTRIC INFRARED FIREPLACE

TESTED & WORKING 31" X 11" X 25.5"



Notes

#89 • CLAM SIX PACK 1660 MAG THERMAL HUB ICE SHELTER - LIKE NEW!

94sq.ft., 11.5ft ACROSS WITH 90" CENTER HEIGHT.



Notes

#90 • KITCHEN TABLE WITH (1) 18" LEAF

56" X 37" X 30"



Notes

#91 • WOOD BAR WITH GLASS TOP & 4 BAR STOOLS

WOOD BAR WITH GLASS TOP 56" X 20" X 41" AND 4 BAR STOOLS WITH BACKRESTS 30" SEAT HEIGHT. SHOWING SOME WEAR.



Notes

#92 • KITCHEN TABLE BY ASHLEY FURNITURE & 4 CHAIRS

TABLE IS 60" X 36" X 30" AND 4 CHAIRS WITH PADDED SEATS - SHOWING SOME WEAR.



Notes

#93 • BUFFET & HUTCH

LAMINATED WOOD, GLASS DOORS & SHELVES WITH LIGHT 50" X 16" X 47", BOTTOM HAS 2 DOORS, SHELF AND DRAWER 50" X 16" X 29" - SHOWING SOME WEAR.



Notes

#94 • ANTIQUE HOOSIER KITCHEN CABINET BY SELLERS

SILVER GRAY OAK TOP HAS 3 DOORS 40" X 13" X 38", BOTTOM 40" X 24" X 33" HAS SLIDE-OUT METAL TOP WITH 2 DRAWERS AND GLASS KNOBS.



Notes

#95 • 6 DRAWER LAMINATED DRESSER

63" X 19" X 30"



Notes

#96 • BEDROOM FURNITURE: DRESSER, CHEST OF DRAWERS, NIGHT STAND

MONDRIAN 9-DRAWER DRESSER IN JAVA FINISH WITH MIRROR 67" X 19" X 37", A 6-DRAWER CHEST OF DRAWERS 39" X 21" X 55" AND A 2-DRAWER NIGHT STAND IN GOOD CONDITION. SHOWI...



Notes

#97 • COIN-OPERATED FOOSBALL TABLE "TORNADO TABLE SOCCER"

COMES WITH 6 BALLS. IN GOOD WORKING CONDITION.



Notes



#98 • CARGO CARRIER/HITCH HAULER

61" X 25"

Notes

Loading items: 100/142