

190+/- ACRES-OFFERED IN 3 TRACTS

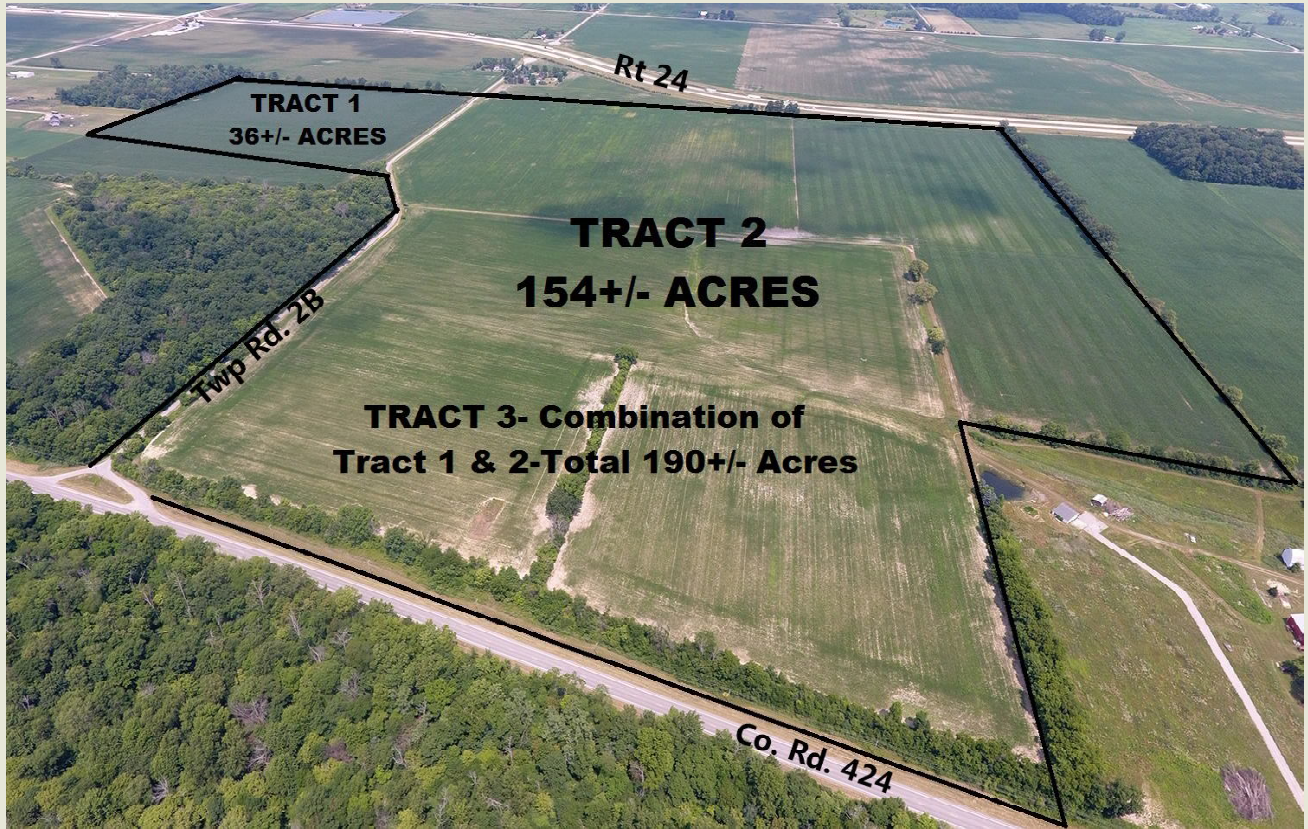
LASKEY FARM-HENRY COUNTY REAL ESTATE FARM AUCTION

TUESDAY OCTOBER 9, 2018 @ 11:00A.M.

FARM LOCATED CO. RD. 424, Between Co. Rd. 2 & Co. Rd. 3,
Liberty Center OH 43532

Auction held at Whalen Auction Bldg, 8020 Manore Rd.,
Neapolis OH (gps Grand Rapids 43522)

See whalenauction.com for drone video and farm information.



1
9
0
+
/
-
A
C
R
E
S

1
9
0
+
/
-
A
C
R
E
S

Parcel: 32-020002.0000, Washington Twp, Henry County
 Dimensions: Approx. 1700' Frontage on Co. Rd. 424
 Taxes: To be determined
 Tillable Acres: Mostly all tillable
 Schools: Otsego

Owner: Catherine Zumberge
 (known as Ann Laskey Farm)

Productive Mixture of Loam Soils in
 Henry County. Seller to provide new
 survey. Property will be sold by the
 acre to establish purchase price.

Terms: \$12,000.00 down on each tract the day of the auction in certified funds w/balance at closing. Closing held on or before December 15, 2018. Possession will be upon removal of fall crops along with receipt of down payment. Have finances ready, selling with immediate confirmation "as is, where is". No buyer's premium! Announcements made the day of the auction take precedence over printed materials. All information was derived from sources believed to be correct but not guaranteed.

WHALEN WHALEN
 REALTY & AUCTION, LTD.

AUCTIONEERS:
 John & Jason Whalen, Mike Murry
 419-875-6317 419-337-7653
 email: info@whalenauction.com

Information contained herein deemed reliable, but not guaranteed.