



101-Wilkinson water lily & cat tails leaded glass lamp. 21" shade, 30" tall

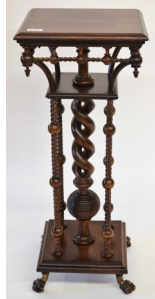


# WHALEN WHALEN REALTY & AUCTION, LTD.

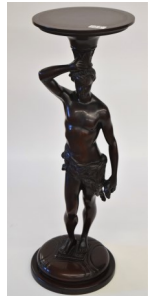
419-875-6317

P O Box 550, 8020 Manore Rd

Neapolis, OH 43547



120-Quality walnut Victorian marble turtle top, table, unusual carvings, extra long, 54"x30" attributed to Alexander Roux



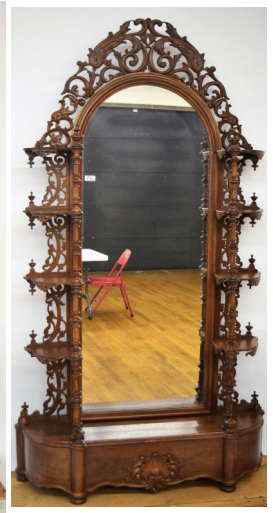
**Bring your truck & trailers-there is a lot of quality furniture.**

**ANTIQUe FURNITURE, CLOCKS, LAMPS & GLASSWARE AUCTION**

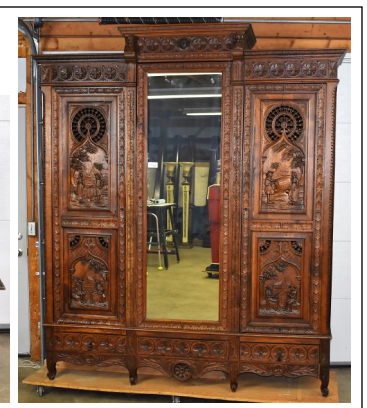
**FRIDAY MAY 14, 2021 @ 10A.M.**

Held at **WHALEN AUCTION BLDG, Neapolis OH.** 8020 Manore Rd.,

Neapolis (GPS Grand Rapids 43522)



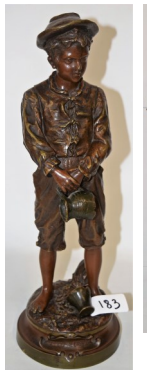
Owner: Cornelius M. Halter Irrevocable Trust and others  
Mr. Halter was a lifetime collector & dealer from Mt. Pleasant MI



152A-Highly carved 5 pc Bedroom, early settler carvings



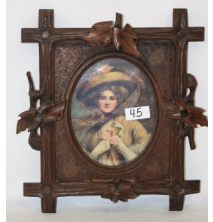
**Approx. 100 pcs of Antique Furniture:** Walnut-11 1/2 ft pier mirror; 2-bookcases w/gallery, 4 hall trees, 2pc. hutch w/desk, 2-Victorian full-size beds; approx.. 15 marble top tables 1-attributed to Alexander Roux; 9 pc dining set; pierced carved inlaid cabinet; 2-door knockdown wardrobe beveled glass; 2 small corner cabinet of Rosewood & walnut; rosewood & walnut etagere; 4 cylinders desks-2 matching; 2 Victorian sofas & several chairs; mahogany curio cabinet with 4 curved glass sides; 5-pc oak carved bedroom suite; 7 fern stands; dressers; chests; commodes; mahogany pump organ signed PH. J. Trayser, Stuttgart; many small pieces of furniture; + more. **Glassware:** RS Prussia; Wavecrest; artglass; bisque; cranberry; Heisey; Royal Doulton; 3 Lusters; 2 small Sevres urns; outstanding blue 3 stem epergne; hand painted china; approx 50 Hummels; 40+ pcs of cut glass-many signed; Steuben calcite; water sets; brides baskets; perfume bottles; Royal Dux & more. **Lamps, Clocks, Collectibles, Primitives & more:** 20+ Lamps-Wilkinson water lily & cat tails leaded glass lamp 21" shade & 30" tall; panel, Gone with the Wind; hanging parlor; hall; art glass chandeliers; approx. 20+ art glass shades; 17+ Clocks includes wall, kitchen, china & small; frames, wall pictures & prints-some paintings on porcelain; pillowcase tops; several bronze statues; beaded purses; furniture trim pieces; Automata Manivelle- 2 dolls w/porcelain heads, cylinder music box inside case; bronze horse on wooden base; plus more. **2<sup>nd</sup> Auction Ring:** collectibles, misc items, jewelry-cameo, some 14k; furniture in the rough; & more.



**WHALEN WHALEN**  
REALTY & AUCTION, LTD.



**Terms:** Cash or check w/ I.D., 3% processing fee on credit/debit cards. 7.25% sales tax applies. See [whalenauction.com](http://whalenauction.com). **Order of sale:** Selling in 2 lines. **Open House:** Week of auction from 8am-3pm and Thur. May 13 from 6-8p.m.



**Whalenauction.com**

166 & 168 matching cylinder bookcase secretaries.



**WHALEN REALTY & AUCTION LTD**  
Auctioneers: John & Jason Whalen, Mike Murry, George Bly, Jacob Ramos  
419-875-6317 [info@whalenauction.com](mailto:info@whalenauction.com)  
Information herein deemed reliable but not guaranteed.