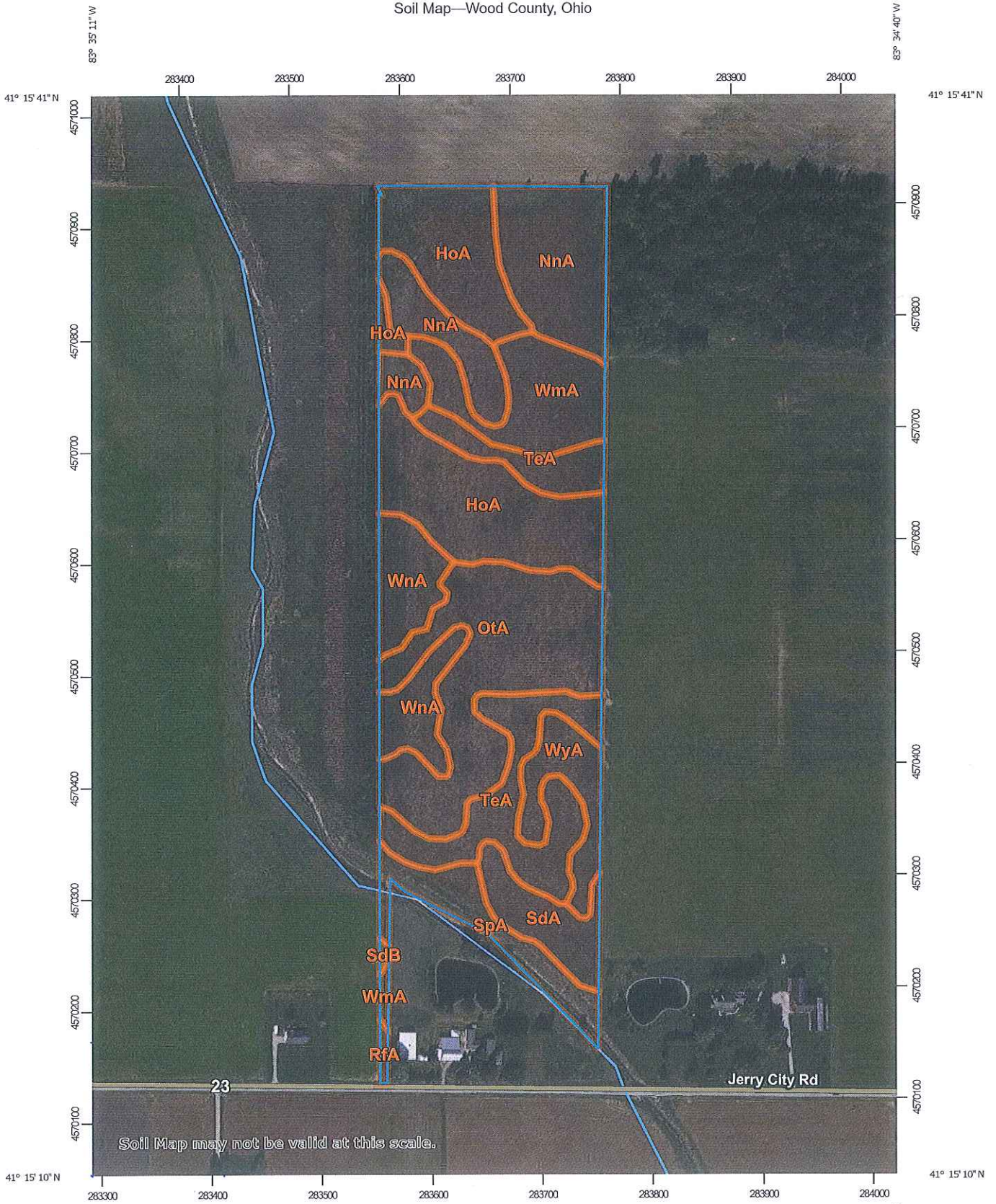
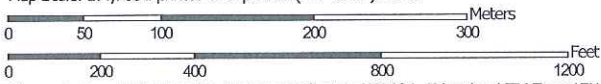


Soil Map—Wood County, Ohio



Soil Map may not be valid at this scale.

Map Scale: 1:4,700 if printed on A portrait (8.5" x 11") sheet.



Map projection: Web Mercator Corner coordinates: WGS84 Edge tics: UTM Zone 17N WGS84



Map Unit Legend

Map Unit Symbol	Map Unit Name	Acres in AOI	Percent of AOI
HoA	Hoytville clay loam, 0 to 1 percent slopes	7.4	21.4%
NnA	Nappanee loam, 0 to 2 percent slopes	5.3	15.1%
OtA	Ottokee-Spinks loamy fine sands, 0 to 2 percent slopes	6.5	18.7%
RfA	Rimer and Tedrow, till substratum, loamy fine sands, 0 to 2 percent slopes	0.1	0.2%
SdA	Seward and Ottokee, till substratum, loamy fine sands, 0 to 2 percent slopes	1.6	4.5%
SdB	Seward and Ottokee, till substratum, loamy fine sands, 2 to 6 percent slopes	0.0	0.1%
SpA	Sloan silty clay loam, 0 to 1 percent slopes, frequently flooded	1.9	5.4%
TeA	Tedrow loamy fine sand, 0 to 2 percent slopes	4.6	13.3%
WmA	Wauseon loamy fine sand, 0 to 1 percent slopes	3.0	8.6%
WnA	Wauseon fine sandy loam, deep to till, 0 to 1 percent slopes	2.7	7.7%
WyA	Wauseon fine sandy loam, 0 to 1 percent slopes	1.7	4.9%
Totals for Area of Interest		34.7	100.0%