

4 PRIME COMMERCIAL LOTS OFFERED AT PUBLIC AUCTION

Thursday, Dec 17, 11:00 AM

Get prepared incredible opportunity to own highly visible lots. Sold to settle estate.

- Lot 1**—1.648 Acres 13126 Airport Hwy, 185' frontage, just west of Girdham Rd, Swanton Twp. Taxes \$310.00 Year
- Lot 2**—7.2 Acres 12455 Airport Hwy, frontage on Airport Hwy and Wilkins Rd (20A). Close to Airport. Swanton Twp. Taxes \$398.20 Year
- Lot 3**—1.28 Acres 10159 Airport Hwy, just east of Eber Rd. Springfield Twp. Taxes \$362.70 Year
- Lot 4**—1.38 Acres 10127 Airport Hwy, just east of Eber Rd. Springfield Twp. Taxes \$364.78 Year
- Lot 5**—Combination of Lots 3 & 4.

**Estate of Richard C. Anderson
David Newcomer, Executor**

Terms: \$2,000 down each lot the day of the auction in certified funds w/balance at closing. Closing held on or before 40 days. Have finances ready, selling with immediate confirmation "as is where is". No Buyer's Premium. Possession at closing. All information on this flyer was derived from sources believed to be correct but not guaranteed. Dimensions are approximate. Buyers need to rely entirely on their own judgement and inspections of property records. Announcements made the day of the auction take precedence over printed materials.

Lucas County

**Auction Held At
Whalen Auction Bldg.
8020 Manore Rd, Neapolis, OH 43547**

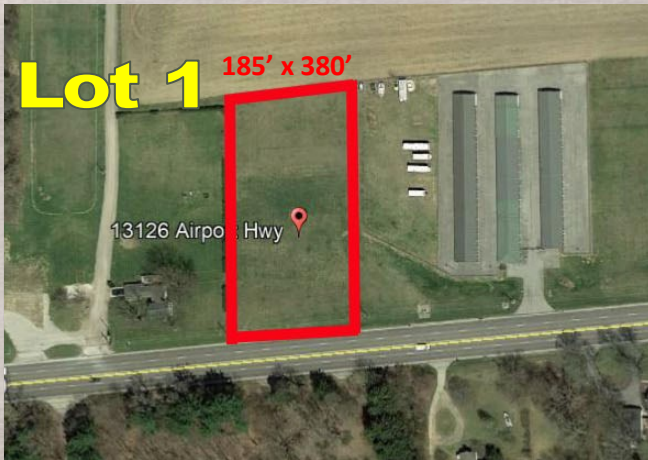


WHALEN WHALEN
REALTY & AUCTION, LTD.

Auctioneers: John & Jason Whalen, Mike Murry

419-875-6317, 419-337-7653 www.whalenauction.com

Information herein deemed reliable but not guaranteed



13126 Airport Hwy
Parcel 72008380

1.648 Acres



Lot 3 Airport Hwy
1.28 Acres
Parcel 6533381

Lot 4 Airport Hwy
1.38 Acres
Parcel 6533294



12455 Airport Hwy
7.2 Acres
Parcel 7210554

4 PRIME COMMERCIAL LOTS OFFERED AT PUBLIC AUCTION Thursday, Dec 17, 11:00 AM

AUCTIONEERS



John
Whalen



Michael
Murry



Jason
Whalen

WHALEN WHALEN
REALTY & AUCTION, LTD.
PO Box 550
Neapolis, OH 43547

Estate of Richard C Anderson
David Newcomer Executor
Williams County Probate Case no: 20201124

WHALEN WHALEN
REALTY & AUCTION, LTD.

419.875.6317 419.337.7653