

WHALEN
REALTY & AUCTION, LTD.

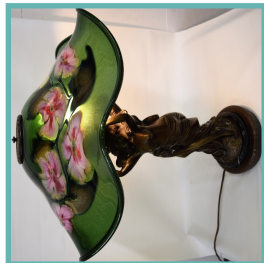
419-875-6317

P O Box 550

8020 Manore Rd

Neapolis OH 43547

AUCTION
Friday, August 21st at 10:00 am
This glass collection sells at 12:00 Noon



AUCTION

Friday, August 21st at 10:00 am

This glass collection sells at 12:00 Noon

LABINO ~ Baker ~ Applebaum ~ Steuben ~ Lotton

Whalen Auction Bldg, 8020 Manore Rd, Neapolis OH (*gps use Grand Rapids OH 43522*) Exit 63 off St Rt 24 to west on St Rt 64, towards Whitehouse, turn south on Finzel Rd to dead end into Neapolis-Waterville Rd, turn right (west to corner of Manore).

501 Dominick Labino

1968 early green bowl
7" diam, 4.5" tall



502

Leon Applebaum
sculpture, mushroom
shaped amethyst top
pulling down to a
clear base 8.75"

503 Steuben clear
duck flying over a
wave 11"



419-875-6317 Please call
Mon-Fri 8am -4pm

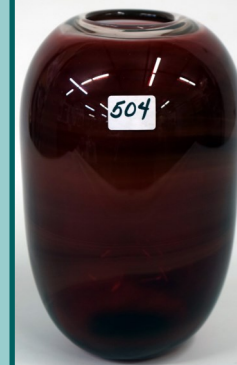
email

info@whalenauction.com

Terms: Cash or check with
I.D., No Buyer's Premium,
3% fee for credit cards,
7.25% sales tax applies.
Lunch by Sandy's.

504 Baker

O'Brien 1981
ovoid vase, red
schmelz swirl 7"





505 Choice of 2 clear Cornicopia vases



506 Dominick Labino 1983 blue vase, pinched pulled classic design 5"



509 Baker O'Brien 1988 clear satin vase, swirled with blue-purple design



510 Leon Applebaum bowl, red yellow green textured surface, heavy, 8" diam, 5" tall

WHALEN **WHALEN**
REALTY & AUCTION, LTD.

Open: week of auction from 8-3pm and Thursday August 20 from 6-8pm., day of auction at 8:30am.



507 Baker O'Brien 1983 Tripartite vase, red and clear, swirls of orange-red-white 5"



508 Dominick Labino 1968 early green pitcher, applied handle, 5.5"



511 Charles Lotton Multi-Flora green lamp, signed, 1997, 23" shade



512 Charles Lotton Multi-Flora green lamp, signed, 2001, 22" shade w/bronze figural base.