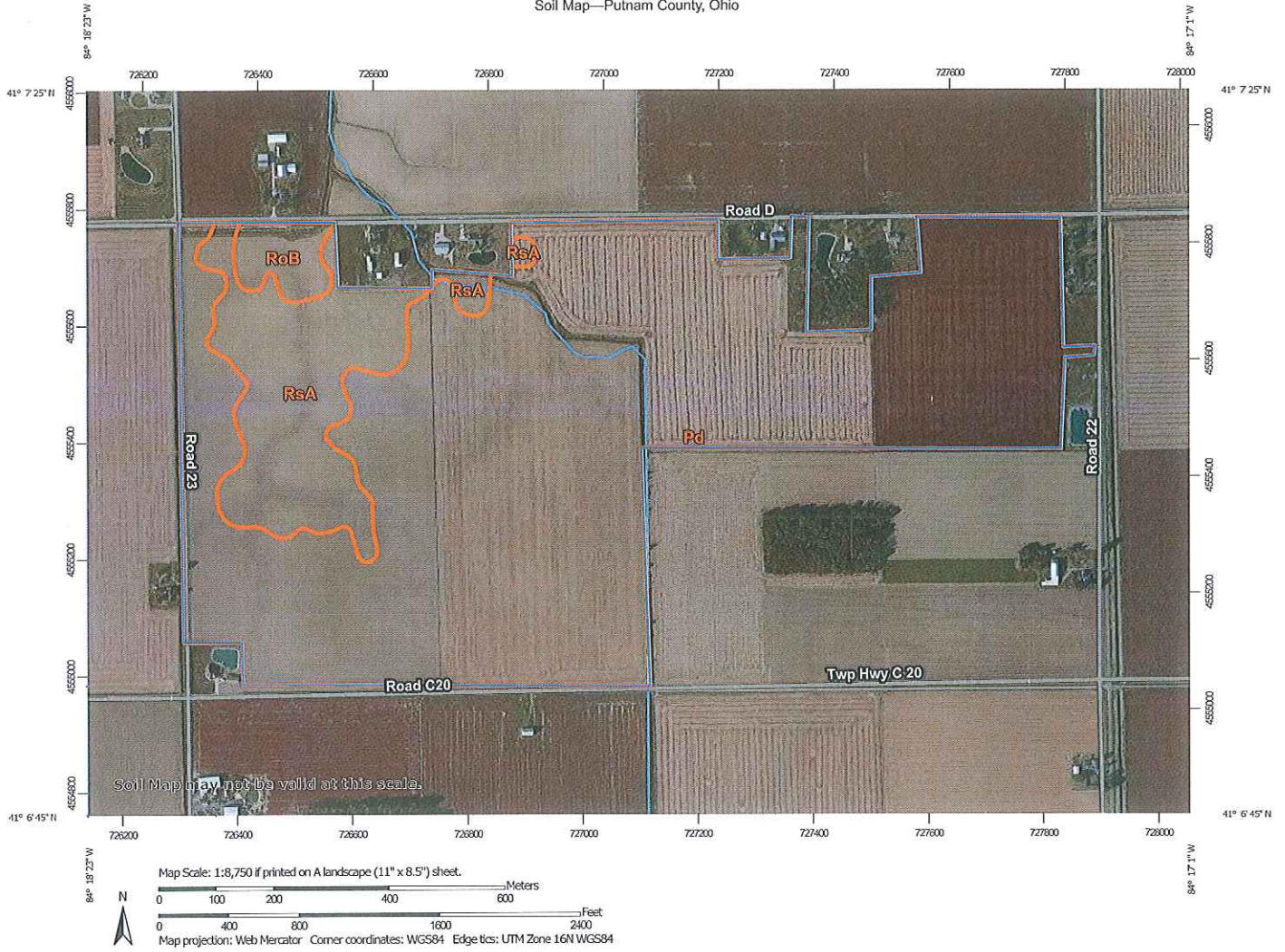


Soil Map—Putnam County, Ohio



Map Unit Legend

Map Unit Symbol	Map Unit Name	Acres in AOI	Percent of AOI
Pd	Paulding clay, 0 to 1 percent slopes	177.0	83.8%
RoB	Roselms silt loam, 2 to 6 percent slopes	4.7	2.2%
RsA	Roselms silty clay loam, 0 to 2 percent slopes	29.4	13.9%
Totals for Area of Interest		211.0	100.0%