



Outstanding Annual Good Friday Antique Auction
Friday, April 10, 2020 at 10:00 am
Whalen Auction Bldg., 8020 Manore Rd. Neapolis, OH
(gps Grand Rapids OH 43522)

Online bidding available, see
whalenauction.hibid.com for
 terms & registration.



WHALEN WHALEN
 REALTY & AUCTION, LTD.



**Personal Property of Mary & the Late Carl Gullett
 of Clyde OH & others
 Furniture of the Late Dan Locke of Mishawaka IN**

WHALEN REALTY & AUCTION LTD
Auctioneers: John & Jason Whalen, Mike Murry, George Bly, Jacob Ramos
419-875-6317 info@whalenauction.com
Information reliable but not guaranteed



P.O. Box 550
Neapolis, OH 43547

Outstanding Annual Good Friday Antique Auction
Friday, April 10, 2020 at 10:00 am

Whalen Upcoming Auctions

Wednesday March 25 @ 5:00p.m., Real Estate Auction, 3064 Muirfield Ave., Toledo
Thursday April 2 @ 11:00a.m., 61.13+/- Acres, ABSOLUTE Real Estate Farmland Auction, SE of 795 at Cummings Rd., Wood County, Millbury.
Monday April 6 @ 11:00a.m., Real Estate Farmland Auction, 120+/- Acres offered Multi Tract Method, Premium Recreational Land, Co. Rd. A, Fulton County, Liberty Center.
Thursday April 9 @ 11:00a.m., Real Estate Farmland Auction, 53.72+/- Acres, Co. Rd. V & 8 Henry Co., Liberty Center.
Saturday April 11 @ 10:00a.m., Tractors, Tools, Motorcycle, Firearm Auction, Stryker.
Saturday April 18 @ 10:00a.m., Large Equipment, Tool, Vehicle, Firearm Auction, Neapolis.
Wednesday April 22 @ 11:00a.m., 255.922+/- Acres, Real Estate Farmland Auction, Putnam County, Continental.
Saturday April 25 @ 10:00a.m., Real Estate & Contents Auction. Delta. 18+/- Acres, 1 1/2 story home w/3 bed, 2 1/2 bath. Automobile, tractor, mower, tools.
Friday May 8 @ 10:00a.m. Antique, glassware, collectibles, primitives, furniture, Neapolis.
Wednesday June 24 @ 11:00a.m., 75.87+/- Acres, Real Estate Farmland, Co. Rd. 8 Delta.

See whalenauction.com for more information

Outstanding Annual Good Friday Antique Auction

Friday, April 10, 2020 at 10:00 am

Whalen Auction Bldg.; 8020 Manore Rd. Neapolis; OH
(gps Grand Rapids OH 43522)

GLASSWARE & POTTERY: Labino, Applebaum; 10+ Wavecrest; 8-Royal Bayreuth; Mt Washington; 6-Carnival; 10+Nippon; Art Glass; 20+ Tiffin; Libbey Silhouette ; Heisey; Imperial; Findlay Klondike & Onyx; Custard; Phoenix; Amberina; 5+ Cut Glass; New Martinsville; 25+ Weller; 10+ Roseville; 10+ Deldare; Majolica; RS Prussia; satin; 10+ water pitchers; shakers; 5+ cracker jars; baskets; vases; tumblers; hand painted.

FURNITURE: Many pieces of high quality burl walnut Victorian Furniture: 6-drawer chest; bookcases; china cabinets; pier mirror; half tester bed; cylinder desks; Mr & Mrs chairs; half commode; set of 8 cane bottom chairs; ornate 48" table-carved heads & pawfoot; marble top tables; secretaries; tables & stands.

VICTORIAN LIGHTING: 5 hanging parlor-assorted colors; panel & leaded; 2 Pairpoint table lamps; Jefferson table lamp; brass & electric chandeliers; Gone with the Wind lamp; banquet lamp & others.

MISC ANTIQUES & PRIMITIVES: Collection of 12 brass & wood inkwells; 10 Chillmark pewter figures; walnut wall phone; Gem roller organ; morning glory Edison horns; Coats & Clark 6-drawer spool cabinet.

John's Note: exceptionally high-quality auction with glass, lamps & furniture! Plan to attend.

Terms: Cash or check w/I.D., lunch by Sandy's. **Preview:** Week of auction from 8am-3pm. Thursday April 9 from 6-8pm. **Order of sale:** Selling in 1 line from itemized listing, Labino & Applebaum sell @ 12noon.

Online bidding applies, see whalenauction.hibid.com for online terms & registration.

Personal Property of Mary & the Late Carl Gullett of Clyde OH & others

Furniture of the Late Dan Locke of Mishawaka IN

WHALEN REALTY & AUCTION LTD

Auctioneers: John & Jason Whalen, Mike Murry, George Bly, Jacob Ramos

419-875-6317 info@whalenauction.com

Information herein deemed reliable but not guaranteed

Annual Good Friday Antique Auction

Friday, April 10, 2020 at 10:00 am

Labino ~ Applebaum Sell @ 12noon



501 Leon Applebaum, whimsical vase, modernistic fun design, lavender color, many squiggles, base is clear triangle shape with 3 legs, 15.5" tall



502 Dominick Labino 1965 early green vase, unusual color, milky swirl, 2 elongated prunts with fold over glass, footed, 8"



503 Leon Applebaum multi-color twist sculpture, 15.5" tall, clear with amber, blue, red & violet



504 Dominick Labino 1965 rare vase, red/amber with textured surface, schmelz rim 6.5"



505 Ed Kachurik 2004 sculpture, amber exterior, faceted, two iridescent gold veils, controlled bubble 7.25"



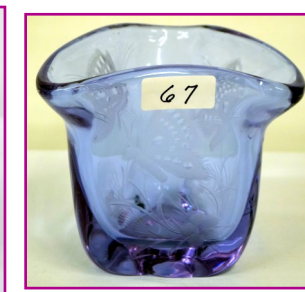
507 Leon Applebaum "Transformation" 2-piece sculpture in violet, amber & red, textured surface, highly polished, 14"



506 Dominick Labino 1970 clear green vase, brown net like lattice encasing 5.75" tall



508 Dominick Labino 1975 cobalt blue vase, slightly iridized, tooled design in ovoid shape 6"



WhalenAuction.com 419-875-6317

Online bidding applies, see whalenauction.hibid.com for online terms & registration.

