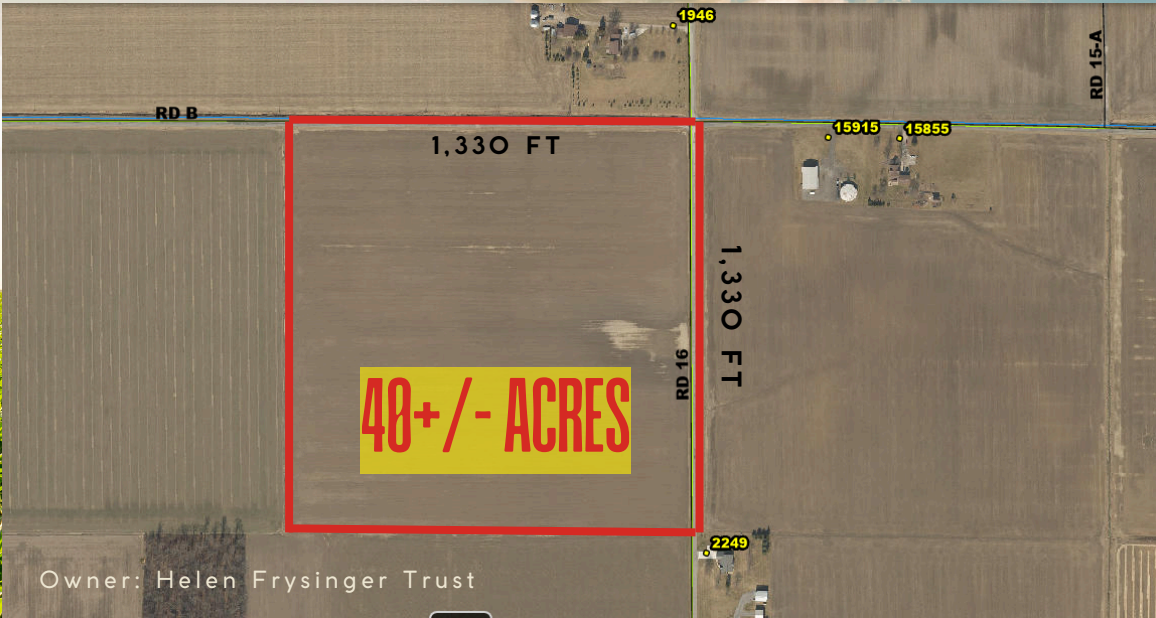


FARMLAND AUCTION

WEDNESDAY, JANUARY 29TH
11:00 AM



PROPERTY DIRECTIONS
SW Corner of Co Rd B and 16
NE of Continental



SOIL TYPE:
LATTY CLAY
LOAM

PARCEL # 34-
0220700000
TAXES \$1,221.88
YEAR

SECTION 9
PALMER TWP
PUTNAM COUNTY
CONTINENTAL
SCHOOLS

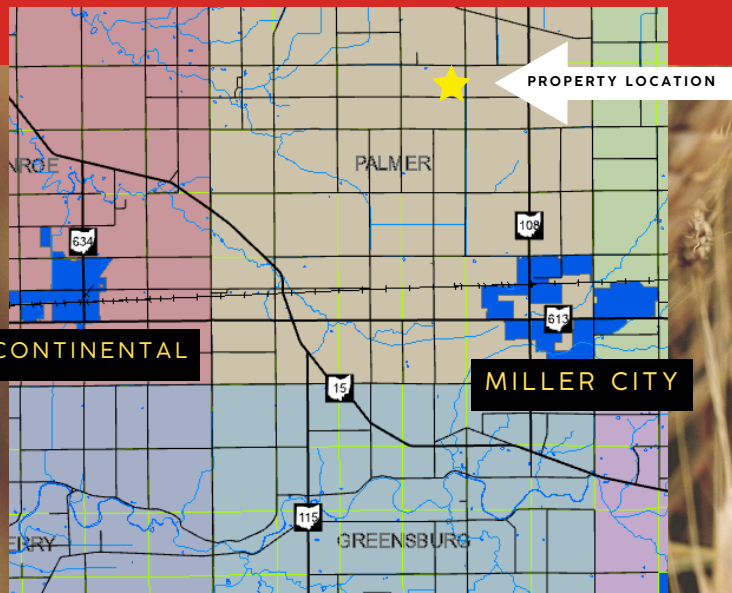
AUCTION HELD AT CONTINENTAL AMERICAN
LEGION
109 S 5TH ST, CONTINENTAL, OH 45831

AUCTION

WEDNESDAY JANUARY
29TH @ 11AM
40+/- ACRES LAND
ONLY

WHALEN ~~WHALEN~~
REALTY & AUCTION, LTD.

PO Box 550
Neapolis, OH 43567



CROP	BASE	PLC
WHEAT	10	51
SOY	29.10	30
TOTAL	39.10	

AUCTIONEERS



JOHN
WHALEN

419-875-6317



JASON
WHALEN

419-337-7653



MICHAEL
MURRY

www.whalenauction.com

Information herein deemed reliable but not guaranteed

TERMS: \$10,000 DOWN DAY OF AUCTION IN CERTIFIED FUNDS W/ BALANCE AT CLOSING. CLOSING HELD ON OR BEFORE 40 DAYS. POSSESSION FOR FARMING PURPOSES ONLY UP ON RECEIPT OF DOWN PAYMENT. HAVE FINANCES READY, SELLING WITH IMMEDIATE CONFIRMATION. "AS IS WHERE IS." NO BUYER'S PREMIUM. POSSESSION AT CLOSING. ALL INFORMATION ON THIS FLYER WAS DERIVED FROM SOURCES BELIEVED TO BE CORRECT BUT NOT GUARANTEED. DIMENSIONS ARE APPROXIMATE. BUYERS NEED TO RELY ENTIRELY ON THEIR OWN JUDGEMENT AND INSPECTIONS OF PROPERTY RECORDS. ANNOUNCEMENTS MADE THE DAY OF AUCTION TAKE PRECEDENCE OVER PRINTED MATERIALS.