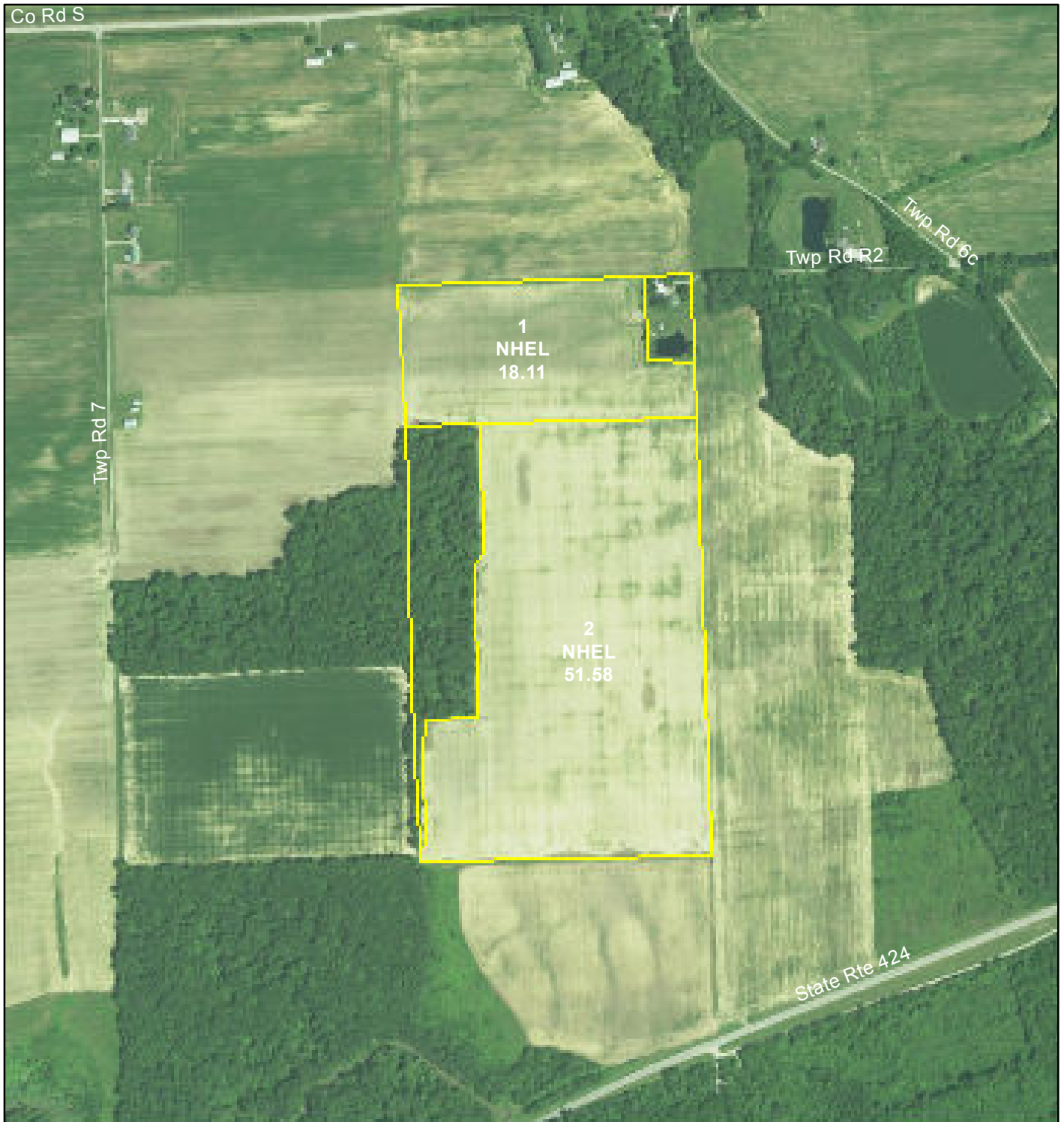




Henry County FSA Office
 2254 North Scott Street
 Napoleon, OH 43545-1092
 Phone: (419) 592-2926
 Fax: (855) 841-6788

Farm: 2500
 Tract: 1033

Print Date: 9/19/2018



1 inch = 660 feet

All of the below are true unless otherwise indicated:

All crops=Non-Irrigated
 All crops used for grain
 Wheat=SRW
 Corn=Yellow
 Soybeans=COM

Legend

- CLU Boundary
- Wetland Determination Identifiers**
- Restricted Use
- ▼ Limited Restrictions
- Exempt from Conservation Compliance Provisions
- HEL** Highly Erodible Land Determination
- NHEL** Not Highly Erodible Land Determination
- UHEL** Undetermined Highly Erodible Land Determination
- CRP** Conservation Reserve Program

USDA FSA maps are for FSA Program administration only. This map does not represent a legal survey or reflect actual ownership; rather it depicts the information provided directly from the producer and/or the 2015 ortho rectified imagery for Ohio. The producer accepts the data 'as is' and assumes all risks associated with its use. The USDA Farm Service Agency assumes no responsibility for actual or consequential damage incurred as a result of any user's reliance on this data outside of FSA Programs. Wetland identifiers do not represent the size, shape or specific determination of the area. Refer to your original determination (CPA-026 and attached maps) for exact wetland boundaries and determinations contact NRCS.