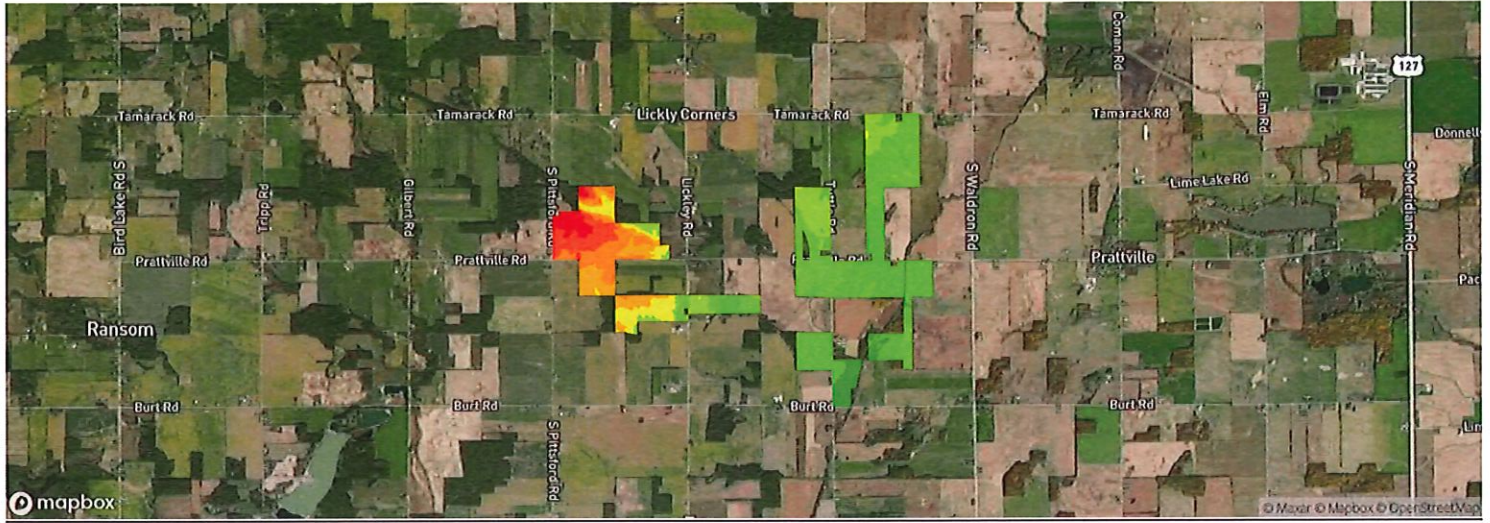


15 fields, 815 acres in Hillsdale County, MI





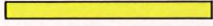






Avg. Elevation

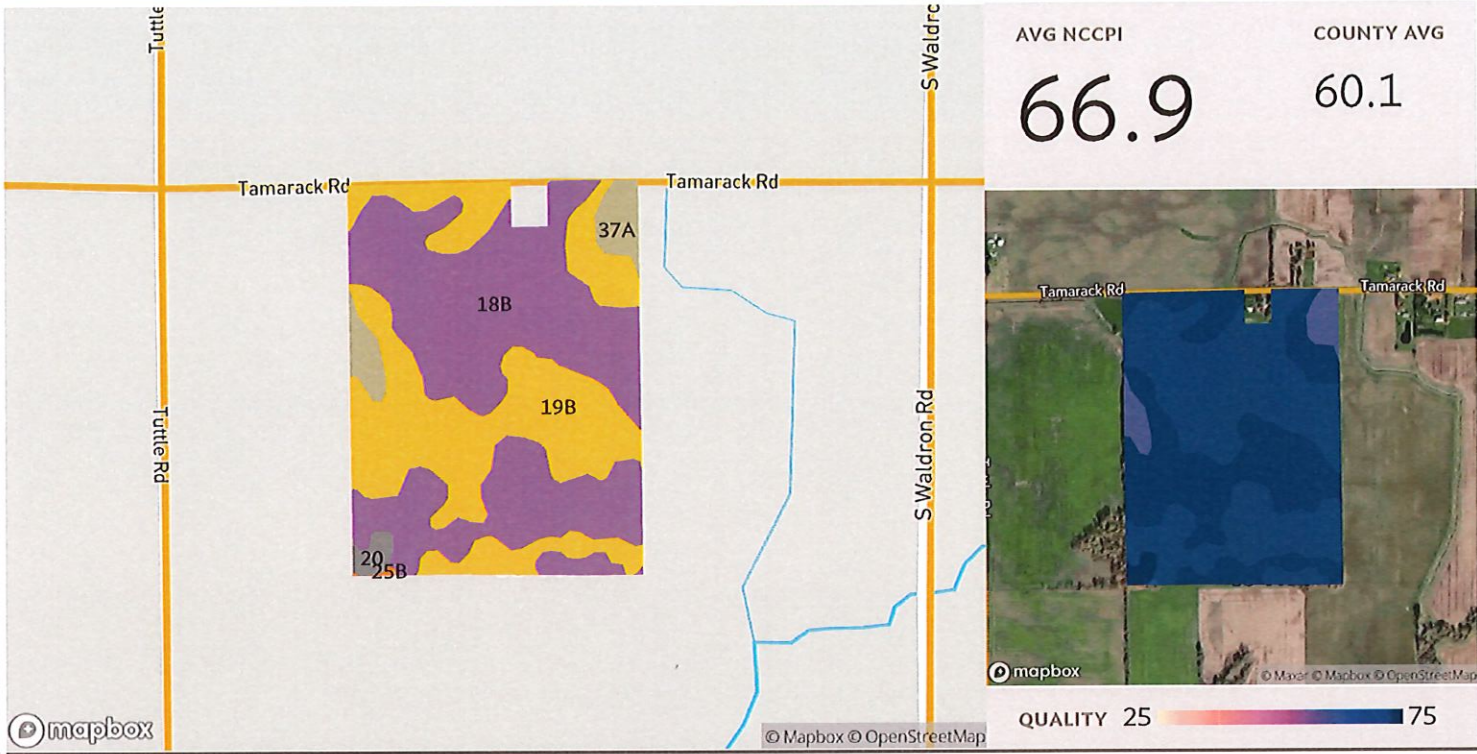
917.70 ft

Total Area

815 ac

	ELEVATION RANGE	ACRES	PERCENT AREA
	952.80 ft - 960.38 ft	24.54 ac	3.01%
	945.21 ft - 952.80 ft	47.86 ac	5.87%
	937.63 ft - 945.21 ft	61.31 ac	7.52%
	930.05 ft - 937.63 ft	63.11 ac	7.74%
	922.46 ft - 930.05 ft	53.08 ac	6.51%
	914.88 ft - 922.46 ft	95.31 ac	11.69%
	907.29 ft - 914.88 ft	211.98 ac	26.0%
	899.71 ft - 907.29 ft	219.32 ac	26.9%
	892.13 ft - 899.71 ft	38.81 ac	4.76%

15 fields, 815 acres in Hillsdale County, MI



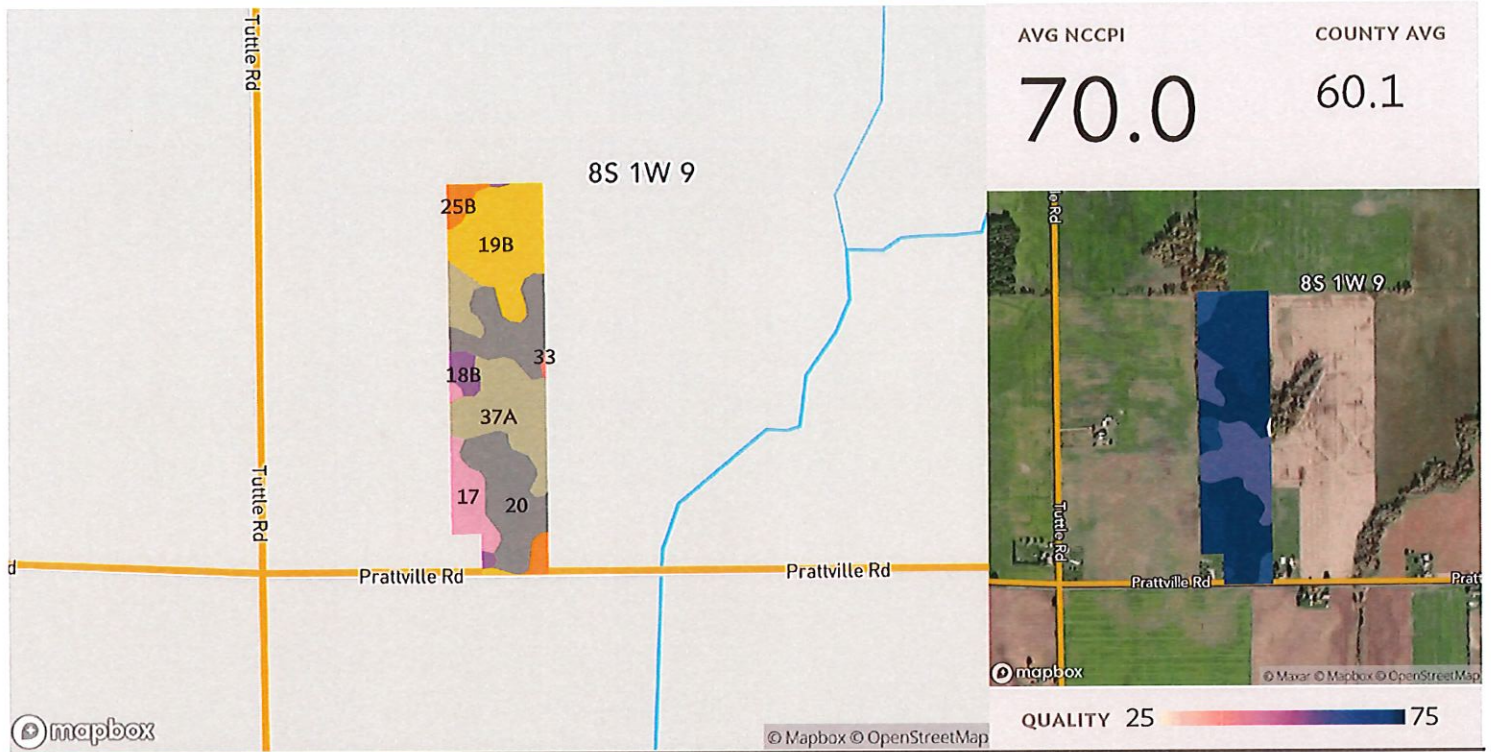
Source: NRCS Soil Survey

# Field 1

119 ac.

SOIL CODE	SOIL DESCRIPTION	ACRES	PERCENTAGE OF FIELD	SOIL CLASS	NCCPI
18B	Glynwood-Blount complex, 1 to 6 percent slopes	64.48	54.0%	2	65.8
19B	Blount loam, 0 to 4 percent slopes	47.59	39.9%	2	68.8
37A	Matherton loam, 0 to 3 percent slopes	5.69	4.8%	2	59.6
20	Pewamo silt loam	1.44	1.2%	2	80.3
25B	Thetford loamy sand, 0 to 4 percent slopes	0.12	0.1%	3	62.6
<b>119.31</b>					<b>66.9</b>

15 fields, 815 acres in Hillsdale County, MI



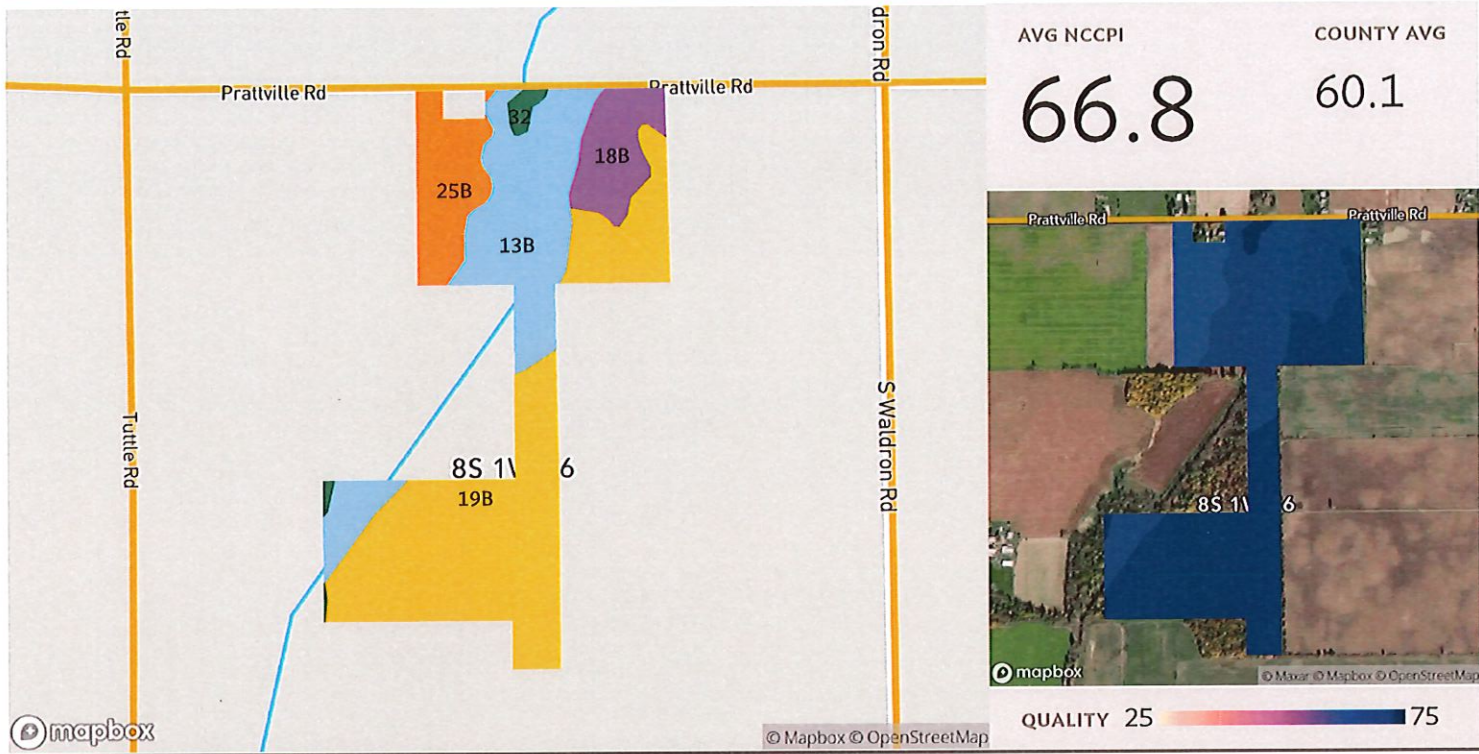
Source: NRCS Soil Survey

## Field 2

39 ac.

SOIL CODE	SOIL DESCRIPTION	ACRES	PERCENTAGE OF FIELD	SOIL CLASS	NCCPI
20	Pewamo silt loam	13.12	33.7%	2	80.3
19B	Blount loam, 0 to 4 percent slopes	9.68	24.9%	2	68.8
37A	Matherton loam, 0 to 3 percent slopes	9.39	24.1%	2	59.6
17	Sebewa loam, disintegration moraine, 0 to 2 percent slopes	3.33	8.5%	2	69.8
25B	Thetford loamy sand, 0 to 4 percent slopes	1.90	4.9%	3	62.6
18B	Glynwood-Blount complex, 1 to 6 percent slopes	1.41	3.6%	2	65.8
33	Houghton muck, disintegration moraine, 0 to 2 percent slopes	0.11	0.3%	5	11.1
<b>38.93</b>					<b>70.0</b>

15 fields, 815 acres in Hillsdale County, MI



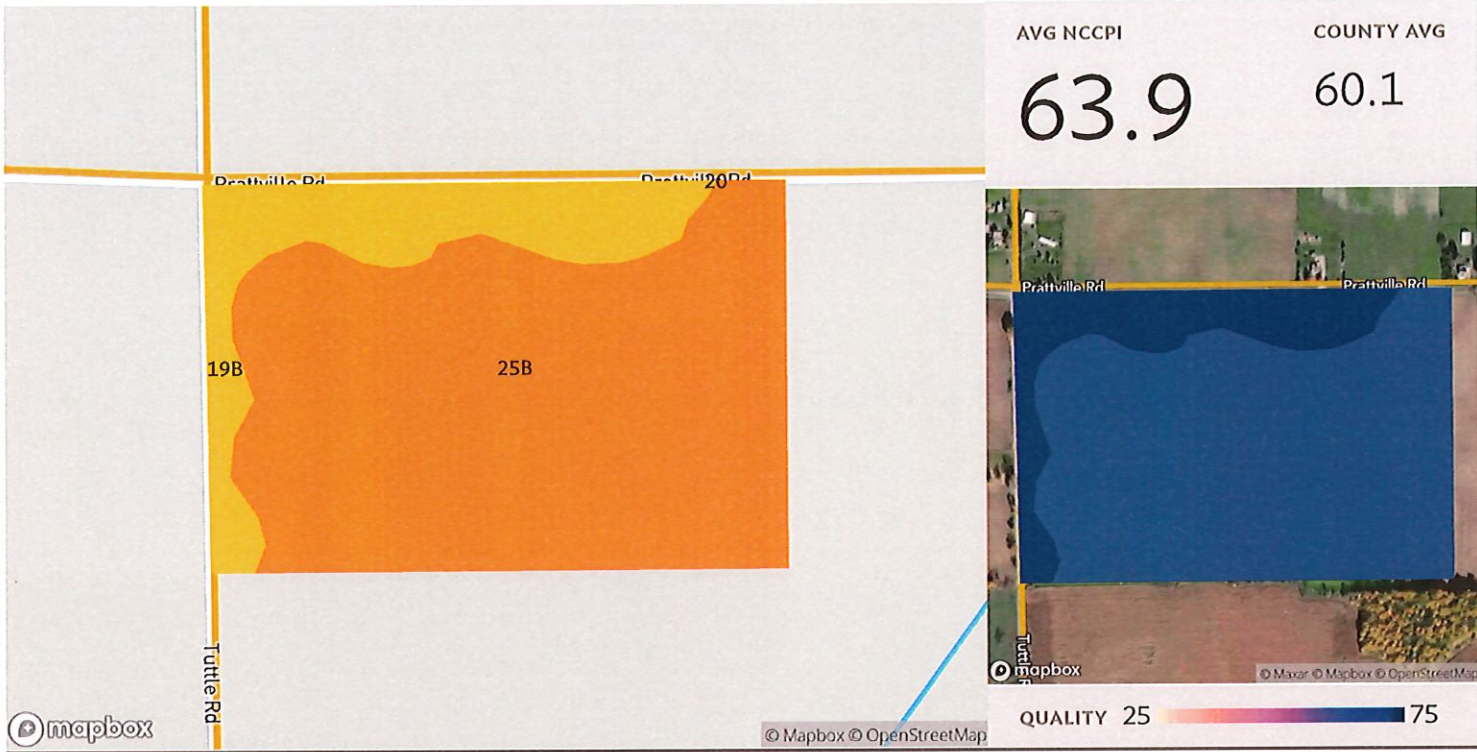
Source: NRCS Soil Survey

### Field 3

98 ac.

SOIL CODE	SOIL DESCRIPTION	ACRES	PERCENTAGE OF FIELD	SOIL CLASS	NCCPI
19B	Blount loam, 0 to 4 percent slopes	49.02	49.9%	2	68.8
13B	Conover loam, 1 to 4 percent slopes	27.19	27.7%	2	64.6
25B	Thetford loamy sand, 0 to 4 percent slopes	11.28	11.5%	3	62.6
18B	Glynwood-Blount complex, 1 to 6 percent slopes	9.18	9.4%	2	65.8
32	Sloan silt loam, 0 to 1 percent slopes, frequently flooded	1.51	1.5%	3	77.0
					<b>66.8</b>

15 fields, 815 acres in Hillsdale County, MI



AVG NCCPI **63.9**  
 COUNTY AVG 60.1

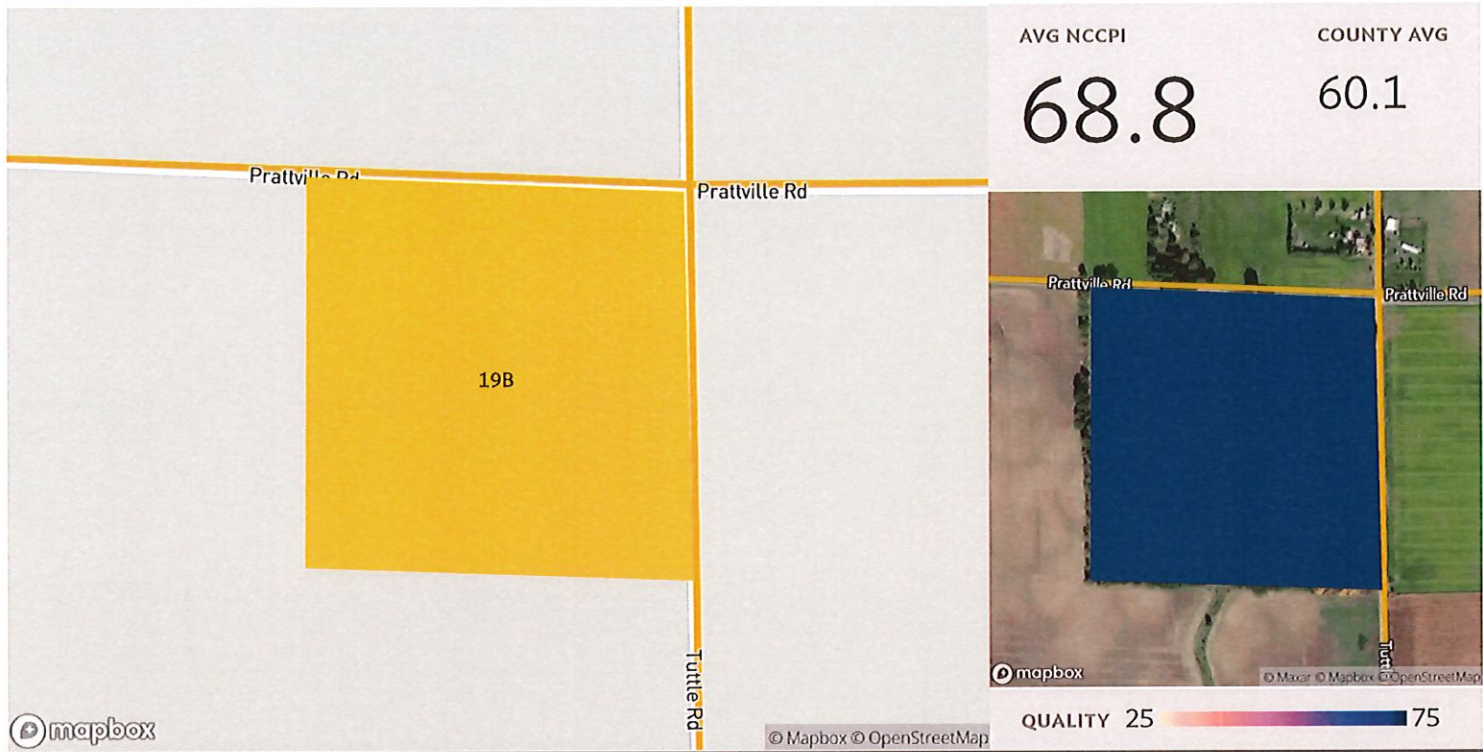
Source: NRCS Soil Survey

## Field 4

60 ac.

SOIL CODE	SOIL DESCRIPTION	ACRES	PERCENTAGE OF FIELD	SOIL CLASS	NCCPI
25B	Thetford loamy sand, 0 to 4 percent slopes	48.02	79.6%	3	62.6
19B	Blount loam, 0 to 4 percent slopes	12.29	20.4%	2	68.8
20	Pewamo silt loam	0.00	0.0%	2	80.3
					<b>60.31</b>
					<b>63.9</b>

15 fields, 815 acres in Hillsdale County, MI



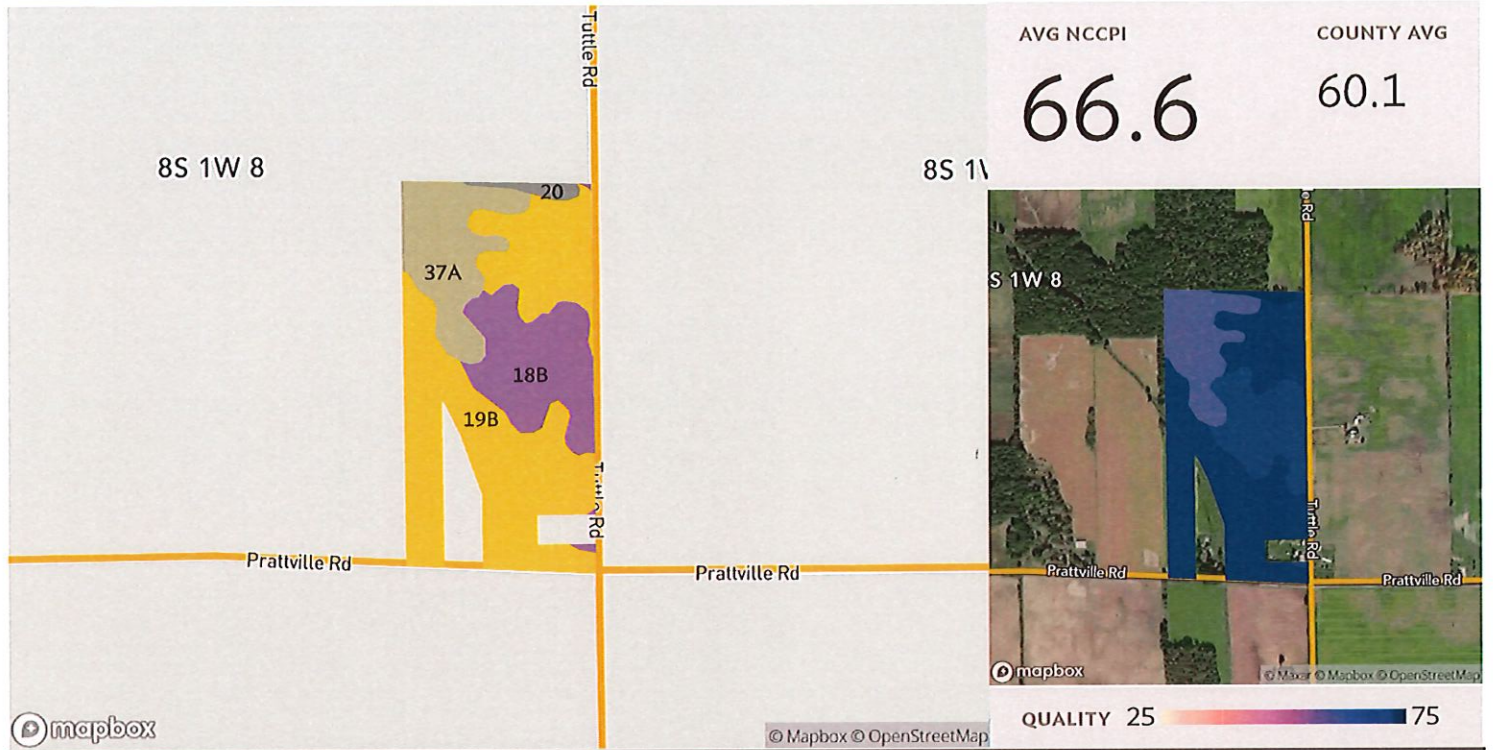
Source: NRCS Soil Survey

## Field 5

40 ac.

SOIL CODE	SOIL DESCRIPTION	ACRES	PERCENTAGE OF FIELD	SOIL CLASS	NCCPI
19B	Blount loam, 0 to 4 percent slopes	39.91	100.0%	2	68.8
		<b>39.91</b>			<b>68.8</b>

15 fields, 815 acres in Hillsdale County, MI



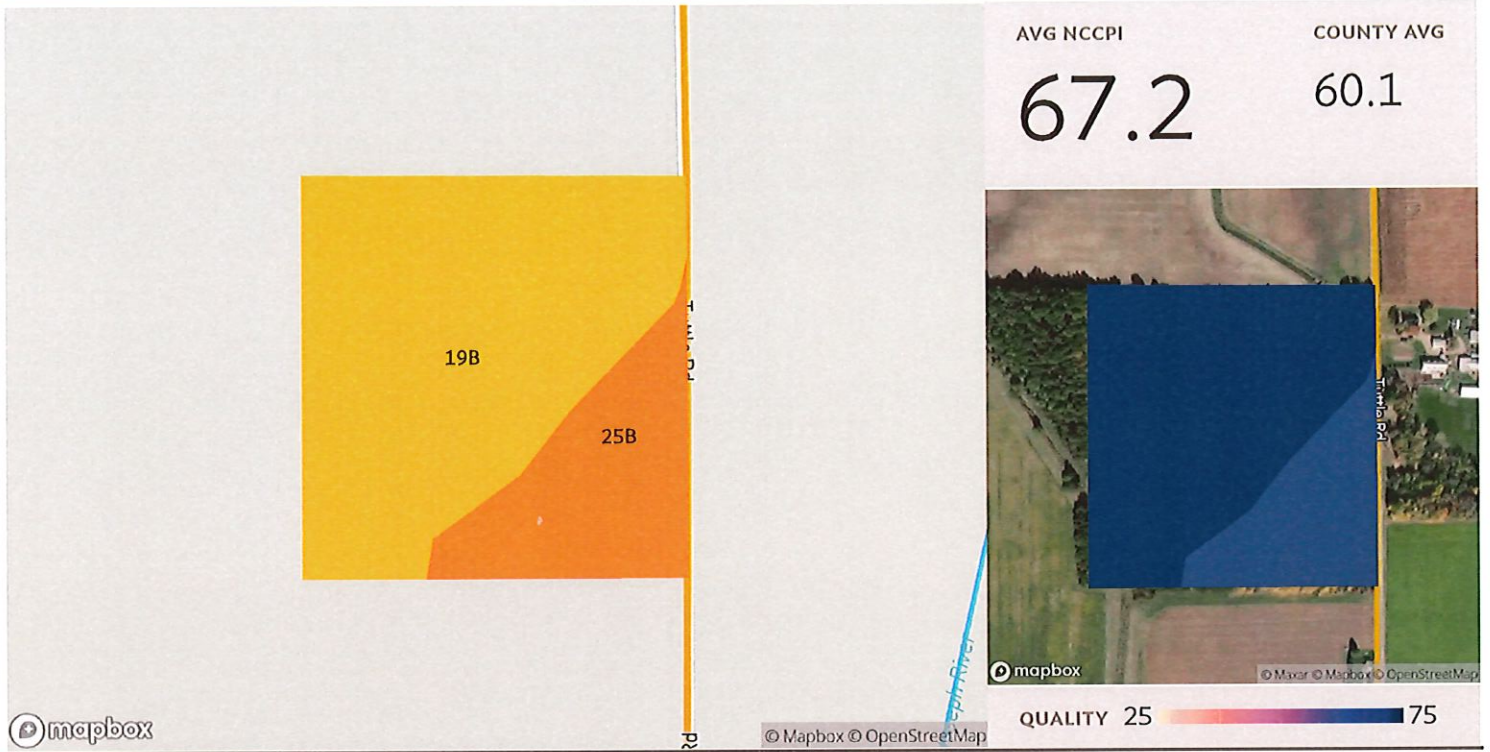
Source: NRCS Soil Survey

## Field 6

71 ac.

SOIL CODE	SOIL DESCRIPTION	ACRES	PERCENTAGE OF FIELD	SOIL CLASS	NCCPI
19B	Blount loam, 0 to 4 percent slopes	41.42	58.2%	2	68.8
18B	Glynwood-Blount complex, 1 to 6 percent slopes	15.34	21.6%	2	65.8
37A	Matherton loam, 0 to 3 percent slopes	13.26	18.6%	2	59.6
20	Pewamo silt loam	1.17	1.6%	2	80.3
					<b>71.19</b>
					<b>66.6</b>

15 fields, 815 acres in Hillsdale County, MI



Source: NRCS Soil Survey

## Field 7

42 ac.

SOIL CODE	SOIL DESCRIPTION	ACRES	PERCENTAGE OF FIELD	SOIL CLASS	NCCPI
19B	Blount loam, 0 to 4 percent slopes	30.69	73.8%	2	68.8
25B	Thetford loamy sand, 0 to 4 percent slopes	10.90	26.2%	3	62.6
					<b>67.2</b>



15 fields, 815 acres in Hillsdale County, MI



Source: NRCS Soil Survey

## Field 8

23 ac.

SOIL CODE	SOIL DESCRIPTION	ACRES	PERCENTAGE OF FIELD	SOIL CLASS	NCCPI
25B	Thetford loamy sand, 0 to 4 percent slopes	12.66	54.2%	3	62.6
13B	Conover loam, 1 to 4 percent slopes	8.10	34.7%	2	64.6
32	Sloan silt loam, 0 to 1 percent slopes, frequently flooded	2.61	11.2%	3	77.0
					<b>64.9</b>

15 fields, 815 acres in Hillsdale County, MI



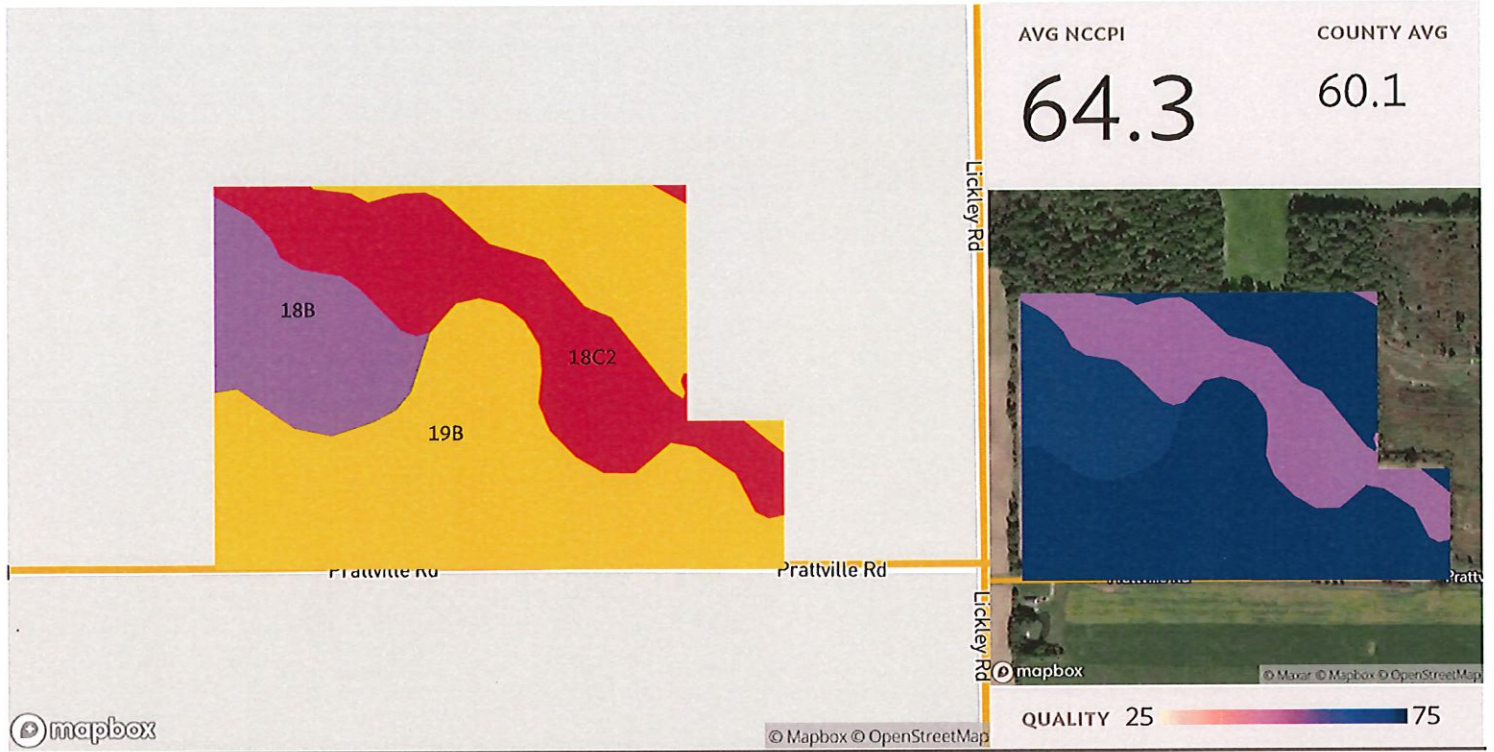
Source: NRCS Soil Survey

## Field 9

10 ac.

SOIL CODE	SOIL DESCRIPTION	ACRES	PERCENTAGE OF FIELD	SOIL CLASS	NCCPI
13B	Conover loam, 1 to 4 percent slopes	8.47	84.7%	2	64.6
32	Sloan silt loam, 0 to 1 percent slopes, frequently flooded	0.82	8.2%	3	77.0
25B	Thetford loamy sand, 0 to 4 percent slopes	0.71	7.1%	3	62.6
					<b>65.5</b>

15 fields, 815 acres in Hillsdale County, MI



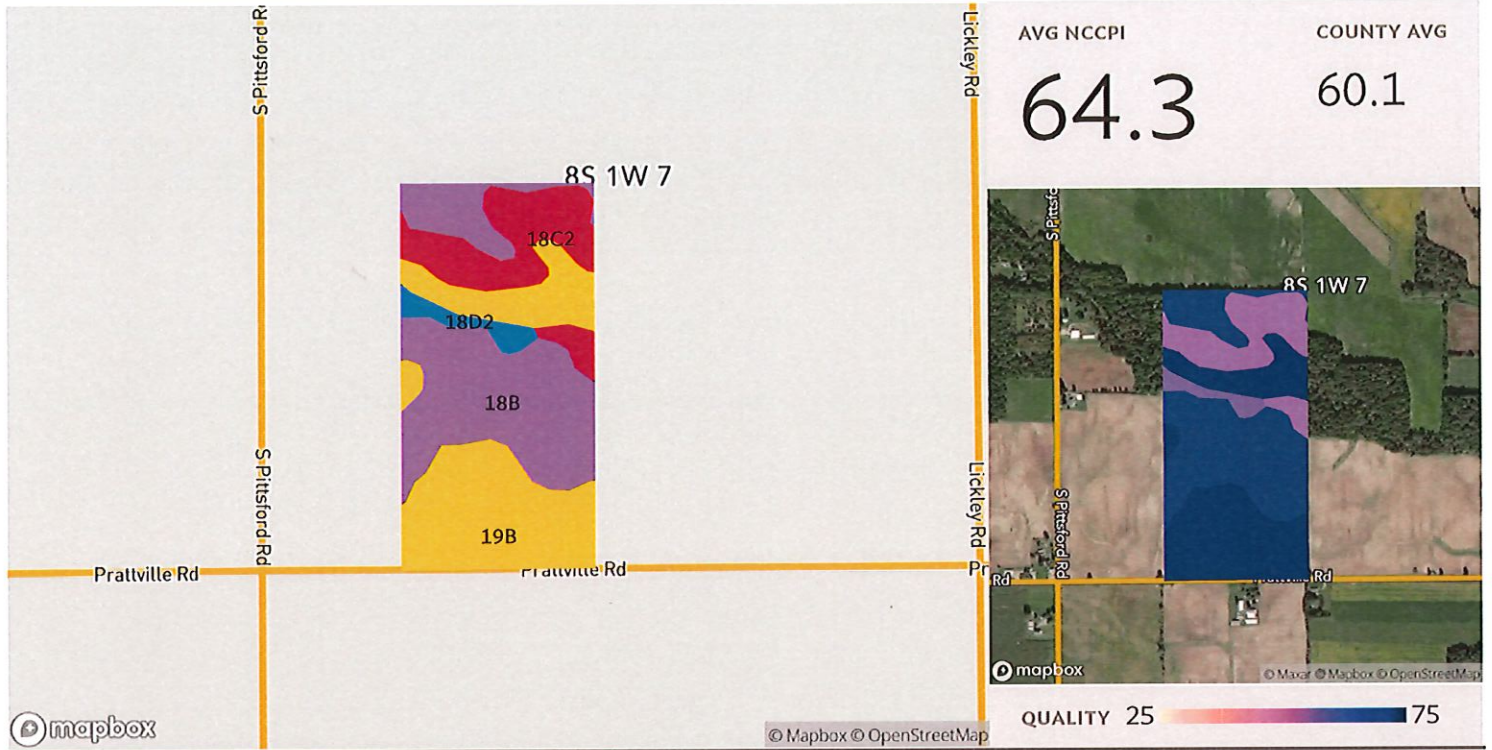
Source: NRCS Soil Survey

## Field 10

52 ac.

SOIL CODE	SOIL DESCRIPTION	ACRES	PERCENTAGE OF FIELD	SOIL CLASS	NCCPI
19B	Blount loam, 0 to 4 percent slopes	30.66	58.7%	2	68.8
18C2	Morley loam, 6 to 12 percent slopes, eroded	13.51	25.9%	3	53.3
18B	Glynwood-Blount complex, 1 to 6 percent slopes	8.10	15.5%	2	65.8
					<b>64.3</b>

15 fields, 815 acres in Hillsdale County, MI



Source: NRCS Soil Survey

## Field 11

80 ac.

SOIL CODE	SOIL DESCRIPTION	ACRES	PERCENTAGE OF FIELD	SOIL CLASS	NCCPI
18B	Glynwood-Blount complex, 1 to 6 percent slopes	31.61	39.8%	2	65.8
19B	Blount loam, 0 to 4 percent slopes	30.75	38.7%	2	68.8
18C2	Morley loam, 6 to 12 percent slopes, eroded	14.42	18.1%	3	53.3
18D2	Morley clay loam, 12 to 18 percent slopes, eroded	2.74	3.4%	4	55.7
<b>79.52</b>					<b>64.3</b>

15 fields, 815 acres in Hillsdale County, MI



Source: NRCS Soil Survey

## Field 12

37 ac.

SOIL CODE	SOIL DESCRIPTION	ACRES	PERCENTAGE OF FIELD	SOIL CLASS	NCCPI
19B	Blount loam, 0 to 4 percent slopes	28.60	77.7%	2	68.8
18B	Glynwood-Blount complex, 1 to 6 percent slopes	8.18	22.2%	2	65.8
18D2	Morley clay loam, 12 to 18 percent slopes, eroded	0.04	0.1%	4	55.7
					<b>68.1</b>

15 fields, 815 acres in Hillsdale County, MI



Source: NRCS Soil Survey

## Field 13

40 ac.

SOIL CODE	SOIL DESCRIPTION	ACRES	PERCENTAGE OF FIELD	SOIL CLASS	NCCPI
19B	Blount loam, 0 to 4 percent slopes	39.88	100.0%	2	68.8
		<b>39.88</b>			<b>68.8</b>

15 fields, 815 acres in Hillsdale County, MI



Source: NRCS Soil Survey

## Field 14

63 ac.

SOIL CODE	SOIL DESCRIPTION	ACRES	PERCENTAGE OF FIELD	SOIL CLASS	NCCPI
19B	Blount loam, 0 to 4 percent slopes	61.06	96.3%	2	68.8
18C2	Morley loam, 6 to 12 percent slopes, eroded	1.41	2.2%	3	53.3
20	Pewamo silt loam	0.90	1.4%	2	80.3
<b>63.38</b>					<b>68.6</b>

15 fields, 815 acres in Hillsdale County, MI



Source: NRCS Soil Survey

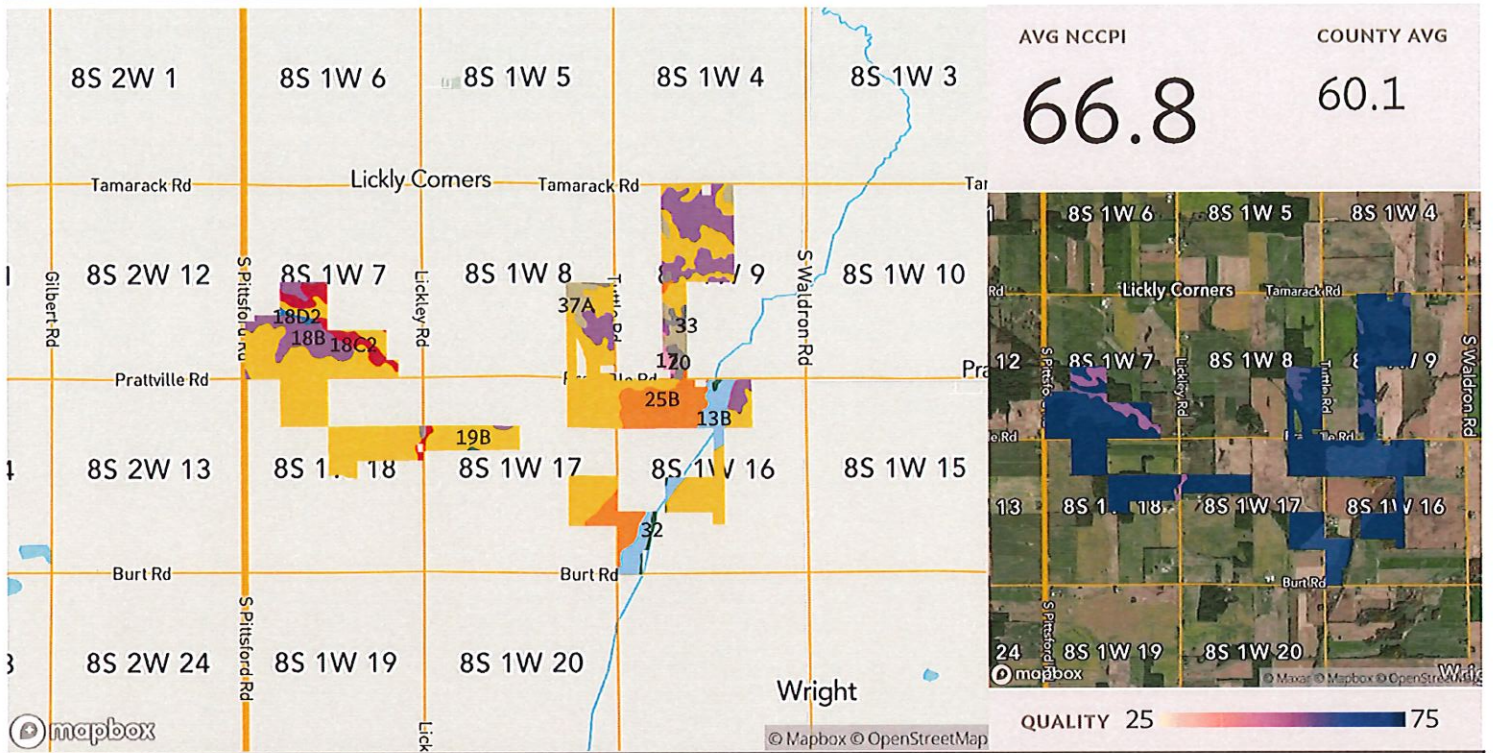
## Field 15

41 ac.

SOIL CODE	SOIL DESCRIPTION	ACRES	PERCENTAGE OF FIELD	SOIL CLASS	NCCPI
19B	Blount loam, 0 to 4 percent slopes	36.97	91.0%	2	68.8
18C2	Morley loam, 6 to 12 percent slopes, eroded	1.54	3.8%	3	53.3
18B	Glynwood-Blount complex, 1 to 6 percent slopes	1.13	2.8%	2	65.8
32	Sloan silt loam, 0 to 1 percent slopes, frequently flooded	0.54	1.3%	3	77.0
20	Pewamo silt loam	0.46	1.1%	2	80.3
		<b>40.64</b>			<b>68.4</b>



15 fields, 815 acres in Hillsdale County, MI



Source: NRCS Soil Survey

## All fields

815 ac.

SOIL CODE	SOIL DESCRIPTION	ACRES	PERCENTAGE OF FIELD	SOIL CLASS	NCCPI
19B	Blount loam, 0 to 4 percent slopes	458.52	56.2%	2	68.8
18B	Glynwood-Blount complex, 1 to 6 percent slopes	139.43	17.1%	2	65.8
25B	Thetford loamy sand, 0 to 4 percent slopes	85.59	10.5%	3	62.6
13B	Conover loam, 1 to 4 percent slopes	43.77	5.4%	2	64.6
18C2	Morley loam, 6 to 12 percent slopes, eroded	30.89	3.8%	3	53.3
37A	Matherton loam, 0 to 3 percent slopes	28.33	3.5%	2	59.6
20	Pewamo silt loam	17.09	2.1%	2	80.3
32	Sloan silt loam, 0 to 1 percent slopes, frequently flooded	5.49	0.7%	3	77.0
17	Sebewa loam, disintegration moraine, 0 to 2 percent slopes	3.33	0.4%	2	69.8

**15 fields, 815 acres in Hillsdale County, MI**

■	18D2	Morley clay loam, 12 to 18 percent slopes, eroded	2.78	0.3%	4	55.7
■	33	Houghton muck, disintegration moraine, 0 to 2 percent slopes	0.11	0.0%	5	11.1
			<b>815.32</b>			<b>66.8</b>