



#1 #2 #3 #4 #5 #7 #8 #9 #10 #11 #13 #15 #17 #18
#12 #14 #16 #6

Boehr Canes Catalogue

1-18/42



Cane #1 description

39,1/4" total rod, working height, 35,1/4"

Stamped and incised mark, Robert Zimmerman, 1991 B,Z

Deep blue, solid glass j-curved grip, red and white spiral ribbons, heavy, slightly tapered shaft with slight twist.



Cane #2

Rod length 42,3/4" , working height 38,3/4"

Smooth solid round shaft, clear glass, bent-over grip, spiral thread, clear glass bead with yellow and blue spiral ribbons



Cane #3

46,3/8" tip to point, working height, 42"

Hand blown green glass with gentle twisted shaft, j-curved grip with flourished tip





Cane #4

50,1/4"

Hand blown slight tint clear glass globe end parade cane with overlay red, white, blue spiral ribbons, smooth, round shaft, tapered tip



Cane #5

58, 3/4"

Hand blown slightly tinted clear glass parade cane, globe end, twisted and tapered shaft with spiral white ribbons.



Cane #6

58,3/4"

Hand blown, globe end, smooth, round shaft, slight tapered tip with red, blue and yellow spiral ribbons



Cane #7

36"

Tiffin glass, solid cobalt blue with added knob end, round shaft, smooth with overlay spiral ribbons, white, yellow



Cane #8

39,1/2" Rod length, working height, 36 inches

Clear glass solid cane, bent, shaped handle, smooth, round shaft, tight navy spiral ribbons



Cane #9

44,1/4" rod length, 41, 1/2" working length

Green-blue solid square twisted shaft glass with bent-over grip, tapered, twist at top and modulated tighter and darkens as it progresses to tip



Cane #10

44" rod, 36,1/4" working height,

Tiffin glass heavy solid dark green glass, round smooth shaft, j-curved grip, overlay white ribbons



Cane #11

45,3/4" rod, 38, 1/2" working height

Clear glass heavy cane, j-curved grip, smooth round shaft with spiral ribbons of red, white, blue in core, knob end



Cane #12
 48" rod, 43,3/4" working height
 Solid clear, slightly blue tinted square cane with twisted and bent-over handle, twisted tip tapered with coffee-colored core



Cane #13
 48"
 Solid fluted square green/blue solid glass, knob end, tapered shaft with twisting at tip and top



Cane #14
 48, 1/2"
 Findlay glass, hand blown beveled globe end, twisted shaft, tapered tip, light green, letter validating provenance, c.1900





Cane #15

62" rod, working height 55, $\frac{3}{4}$ "

Blue/green beveled square cane with tight twist at j-curved, bent grip and tapered tip, loose twist shaft, solid glass



Cane #16

54, $\frac{1}{2}$ "

Hand blown globe end twisted red white glass, round parade cane, blunt tip



Cane #17

51, $\frac{1}{2}$ " rod, 47, $\frac{1}{2}$ " useful height

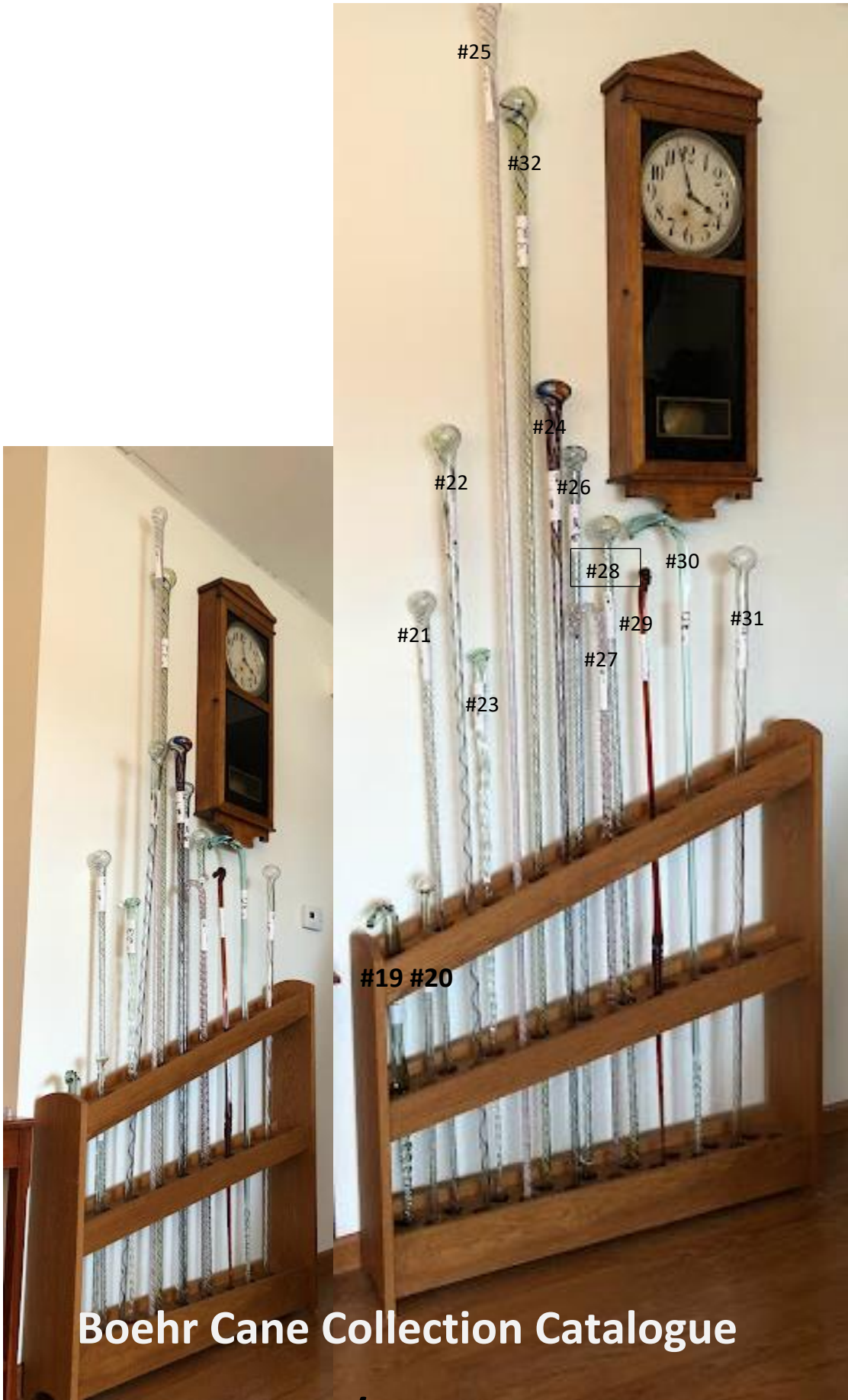
Square clear glass, fluted corners, twisted on bent-over grip and twist on tip end, tapered.



Cane #18

65, $\frac{1}{2}$ " Handblown, clear glass with globe top, gold coated core with red spiral ribbon





Boehr Cane Collection Catalogue

Canes #19-32/42



Cane #19

33 inch rod, 29 ½ inch working length

Solid handcrafted beveled square green glass cane with j-curve twisted grip and twist at bottom



Cane #20

31"

Hand blown, clear glass smooth, round shaft with globe end, amber/gold thin spiral beading, tapered tip



Cane #21

54 ½ inches

Clear glass, hand-blown smooth, round shaft, globe end, thin red, blue, white yellow spiral ribbons, tapered tip





Cane #22

67 inches

Clear glass hand blown smooth, round shaft, with red, burgundy, yellow blue thin spiral ribbons, tapered tip



Cane #23

49 ½ inches

Solid handcrafted glass, green tint, beveled with continuous twist, knob end, slightly tapered knob to tip



Cane #24

71 inches

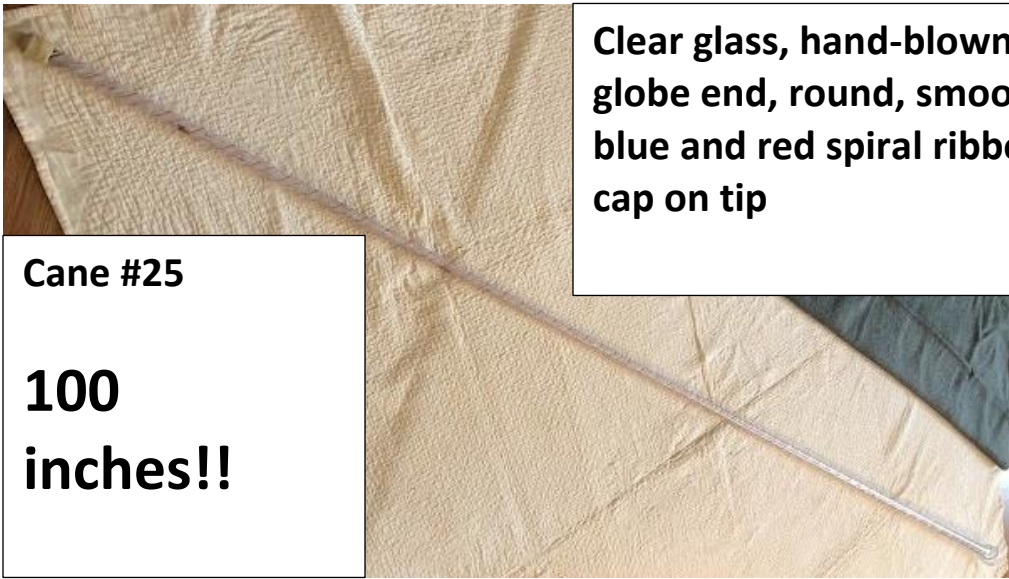
Hand-blown globe end, smooth shaft clear glass with orange and blue spiral ribbons





Cane #25
100 inches!!

Clear glass, hand-blown parade cane, globe end, round, smooth shaft, pale blue and red spiral ribbons, rubber cap on tip



Cane #26
66 ½ inches
Hand-blown clear glass globe end, round, smooth shaft parade cane, burgundy and blue spiral ribbons

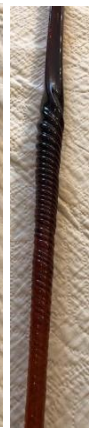


Cane #27
58" rod, 53 inch working height
Solid hand-crafted j-curve twisted grip, beveled glass cane, lavender, slight taper



Cane #28
60 ¼ inch
Hand-blown clear glass, globe end smooth, round shaft with spiral blue and yellow ribbons, tapered tip





Cane#29
59 ¼ inch rod, 56 inch working height
Solid glass handcrafted square shaft cane, red with bent-over twisted grip, twisted from decorative center to tapered tip, slight crack 7 inches from tip



Cane #30
65 ¾ inch rod, 60 ½ inch working height
Solid tinted green glass square cane, j-curve twisted grip, smooth shaft and twisted tapered tip.



Cane #31
56 ½ inches
Hand-blown clear glass with thin red spiral ribbons, globe end, smooth round shaft, rubber tip cap



Cane #32
94 inches
Hand-blown clear glass globe end parade cane, smooth round shaft, blue, white, yellow, burgundy spiral ribbons, tapered tip





Boehr Cane Collection Catalogue

#33-42/42



Cane #33

Approximate 50 inch rod, 46 inch working height

Tinted green handcrafted solid glass cane, smooth round rod at top half, bent-over grip, twisted bottom half, slight taper. Full length only visible above, in rack.



Cane #34

45 inch rod, 41 inch working height

Solid glass handcrafted square cane, coffee-colored, bent-over twisted grip, twist on tip, tapered.



Cane #35

43 inch rod, 38 ½ inch working height

Solid handcrafted turquoise tinted glass cane, twisted from bent-over grip to tapered tip, amber ribbon spiral



Cane #36

37 inches

Shepherd's staff clear solid handcrafted square rod glass cane, twisted top section with loop grip, twisted lower section with tapered tip





Cane #37

58 inches

Hand-blown amber glass parade cane smooth, round, shaft with blue, red, white spiral ribbons, globe end, tapered tip.



Cane #38

43 ½ inches

Hand-blown glass parade cane, smooth, round shaft, silver lined with red spiral ribbon, globe top, BROKEN end



Cane #39

56 ½ inches

Clear glass, hand-blown parade cane, smooth round shaft, white spiral ribbons, globe top, tapered tip



Cane #40

13 ½ inches

Solid, smooth round shaft, clear glass, j-curved grip doll cane with incised, spiral ribbons





Cane #41

37 ½ inch rod, 34 inch working height

Solid glass, slight yellow tint with green vine in core, twisted entire length, j-curved grip



Cane #42

38 ¾ inch rod, 35 inch working height

Clear hand-crafted square cane, slight pink tint with J-curve, bent-over twisted grip and twist at bottom, plastic tip cap

